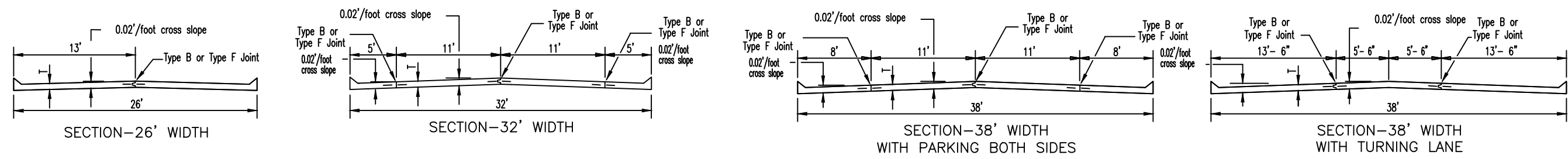


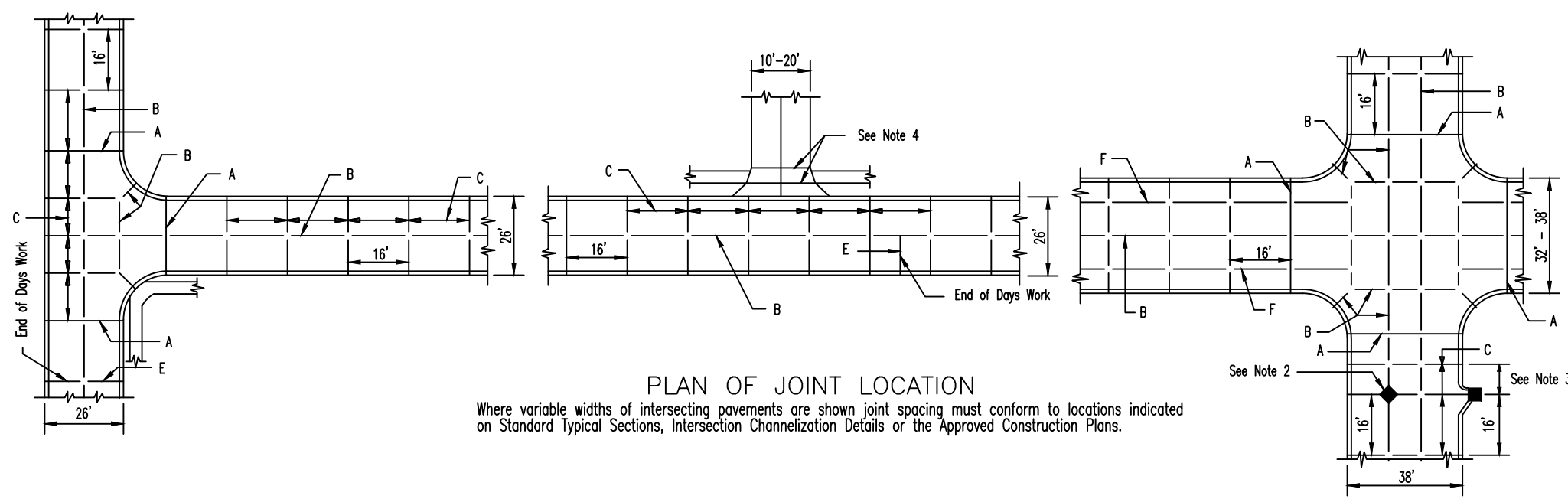
INTEGRAL ROLLED CURB AND CONCRETE PAVEMENT TYPICAL SECTIONS AND DETAILS



GENERAL NOTES

- Do not scale drawing. Follow dimensions.
- All street inlets shall be separated from the pavement and curb by expansion joint material extending completely through curb and slab. Manhole casting within the pavement limits shall be boxed as shown.
- When a joint falls within 5ft. of, or contacts inlets, manholes, or other structures, shorten one or more panels either side of opening to permit joint to fall on round structures and at or between corners of rectangular structures.
- Driveway configurations are shown in the "Entrance Construction Details".
- Construction joints and tie bars may be omitted when curb is poured monolithic with pavement.
- Minimum Thickness for Pavement is:
 - Residential 26'-32' wide Streets 6"
 - Residential 39' wide Streets 7"
- For joint and bar requirements refer to the Pavement Construction Details for Joints and Curbs. Note that the width and location may change the type of joint required.
- Transverse or longitudinal construction joints in slip formed pavements shall be a saw cut joint at a max. 14' spacing
- The locations of the Type B longitudinal construction joints in the sections may be interchanged for the different widths of construction if approved by the Department.

PLAN OF JOINT LOCATION
Where variable widths of intersecting pavements are shown joint spacing must conform to locations indicated on Standard Typical Sections, Intersection Channelization Details or the Approved Construction Plans.



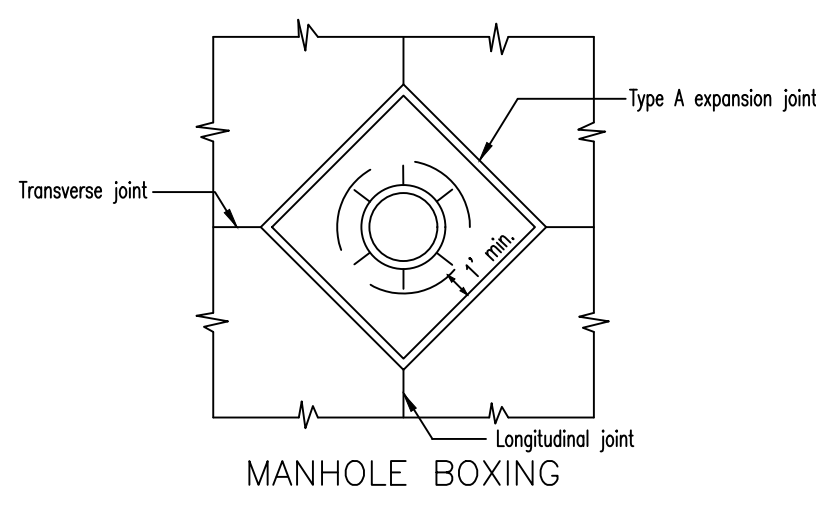
STREET	JOINT TYPE	JOINT AND BAR REQUIREMENTS
3 LANE RESIDENTIAL 32'-38' wide pavement	Transverse	TYPE G 1" smooth dowel bars 18"lg. @ 12" ctrs.
	Longitudinal	Within a poured section: TYPE F 5/8" φ deformed tie bars 18"lg. @ 30" ctrs. At the edge between two poured sections: TYPE B 5/8" φ deformed tie bars 30"lg. @ 30" ctrs.
	Expansion	TYPE A no steel bars
RESIDENTIAL 2 LANE 26' wide pavement	Transverse	TYPE C no steel bars
	Longitudinal	Full Width Construction: TYPE B modified with 1/2" φ deformed tie bars 18"lg. @ 30" ctrs. Half Width Construction: TYPE B modified with 1/2" φ deformed tie bars 30"lg. @ 30" ctrs.
	Expansion	TYPE A no steel bars

NOTE

Joint filler material shall meet ASTM designations as follows:
 Bituminous type ASTM D-994-53
 Non extruding & resilient bituminous type (fibers) ASTM D-1751-60T
 Non extruding & resilient non bituminous type (rubber) ASTM D-5249

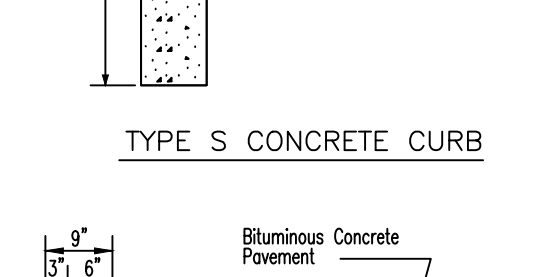
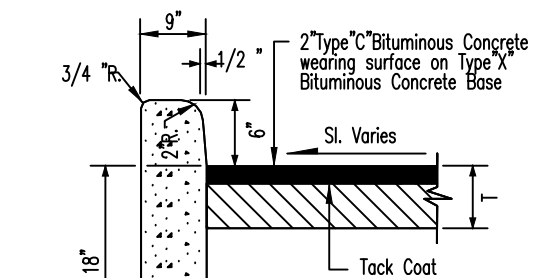
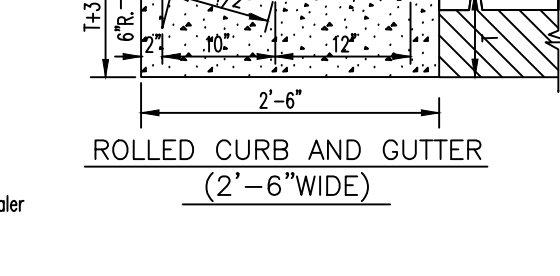
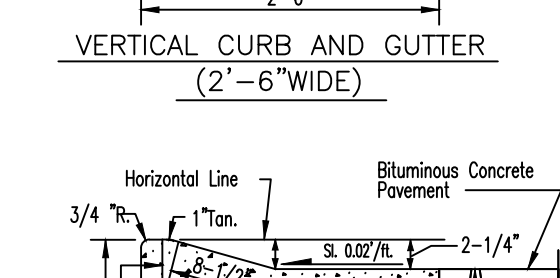
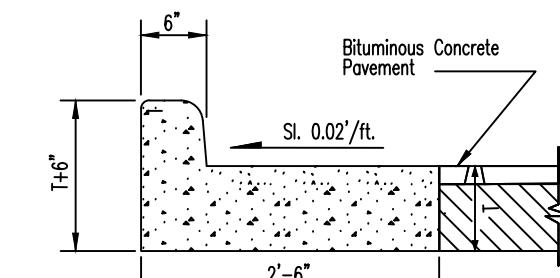
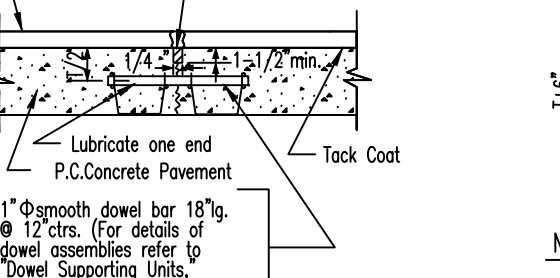
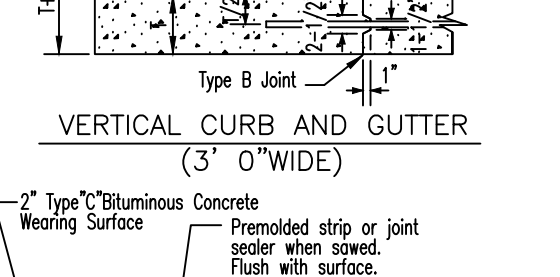
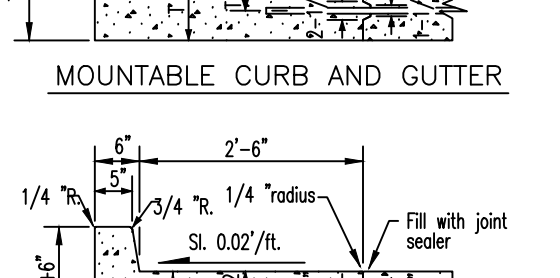
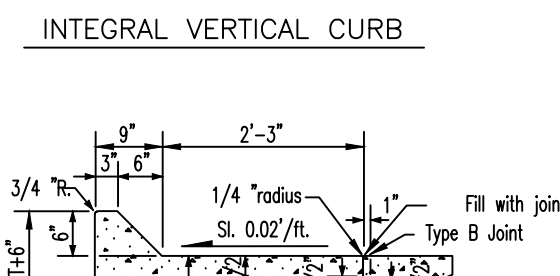
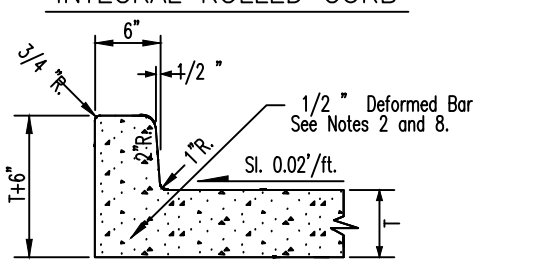
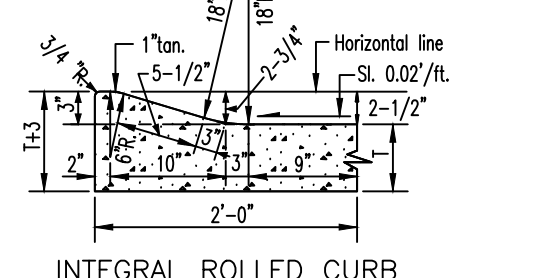
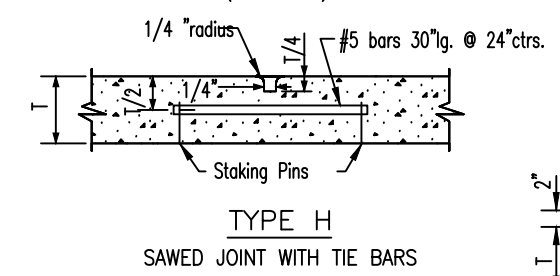
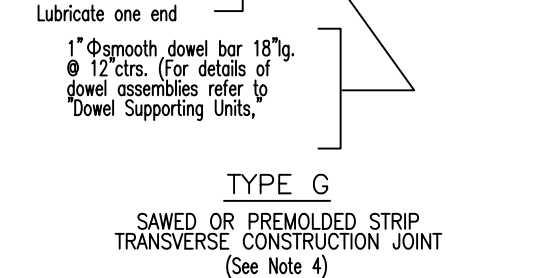
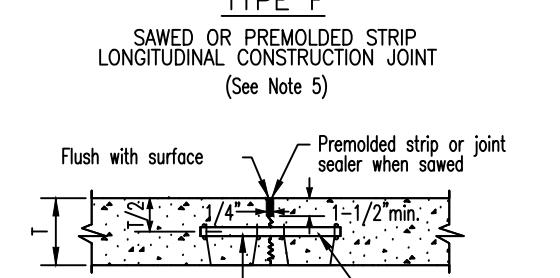
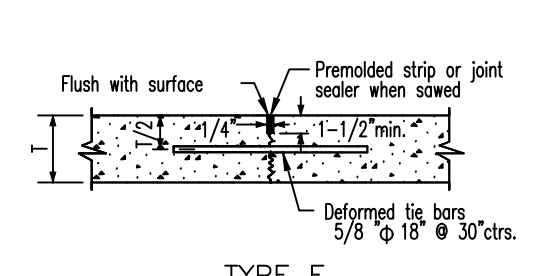
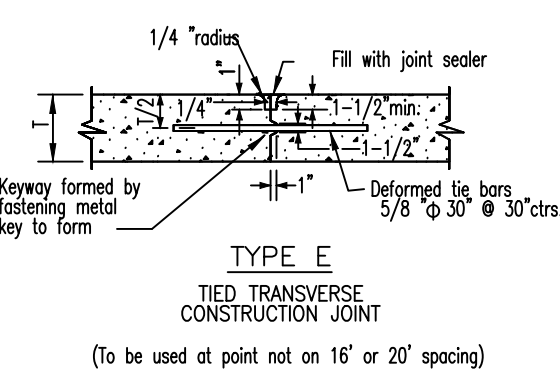
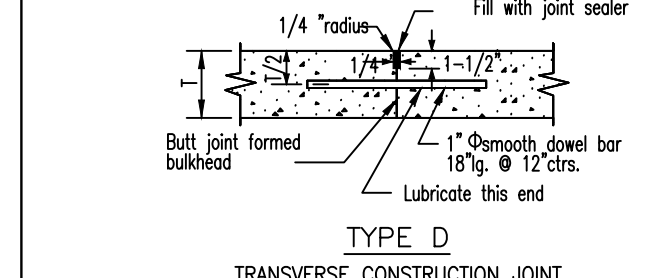
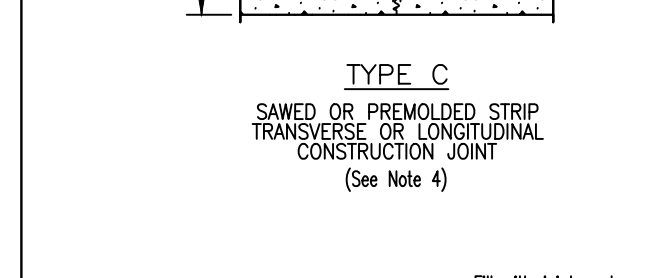
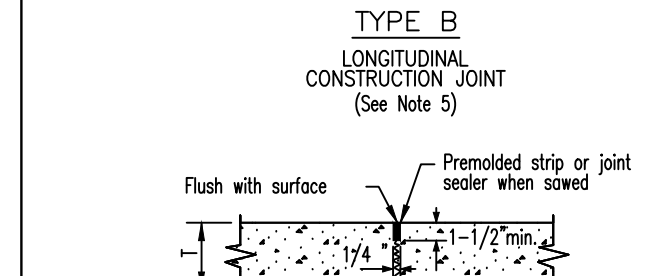
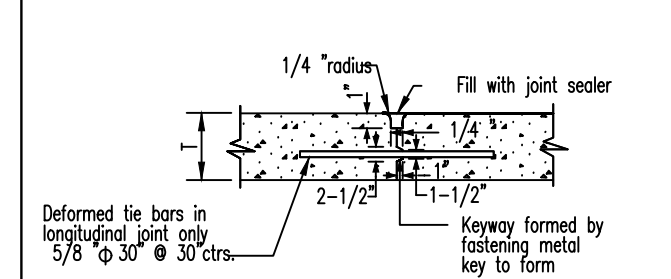
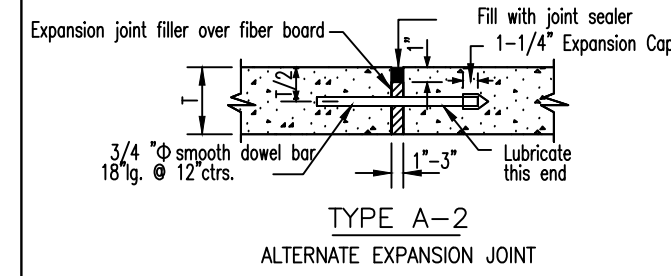
NOTE

Joint sealant material shall meet ASTM and AASHTO designations as follows:
 ASTM D-3465 AASHTO M-301 or
 ASTM D-1190-74 AASHTO M-173-84
 or latest revisions thereof.



CITY OF O'FALLON
ENGINEERING DEPARTMENT
O'FALLON, MISSOURI

PAVEMENT CONSTRUCTION DETAILS
INTEGRAL ROLLED CURB AND
CONCRETE PAVEMENT
TYPICAL SECTIONS AND DETAILS



GENERAL NOTES

- Do not scale drawing. Follow dimensions.
- Construction joint and tie bars may be omitted when curb is poured integral with pavement.
- Minimum Thickness for Pavement is:

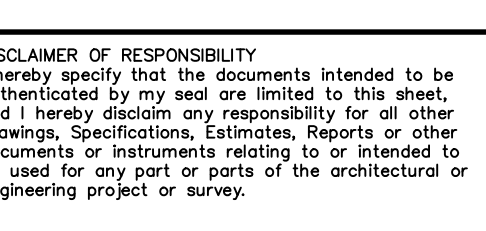
Bituminous Concrete Pavement Thickness =	(1)	6"	7-1/2"
All Residential Minor and Local Streets		7"	9-1/2"
Residential Collector and Non-Residential Streets		8"	12"
- Type "C" Transverse Joint is required for Arterial and Non-Residential streets. Use Type "C" transverse joint for all others.
- For Subdivision or Minor Streets having 6" concrete pavement, 1/2" φ deformed tie bars 30" long at 30" centers shall be used for Type "B" Longitudinal joints and 1/2" φ deformed tie bars 18" long at 30" centers shall be used for Type "F" Longitudinal joints.
- Refer to Pavement Construction Details for Integral Vertical Curb and Concrete Pavement Typical Sections and Details and Integral Rolled Curb and Concrete Pavement Typical Sections and Details for joint and bar requirements for different street classifications. Note that width and location of each poured portion of the pavement may change the type and location of joint required.
- All deformed bars for joints and curbs shall be Steel Reinforcing Bars conforming to A.S.T.M. 615-75, Grade 40.
- Length of the tie bars shall equal the thickness of pavement plus the height of curb less 3". Tie bars shall be placed at 24" centers.
- Transverse or longitudinal construction joints in slip formed pavements may be made with a groover or tool, if such device has been approved in advance by the Department.
- The free end of the dowel bar for a length of at least 11 inches shall be coated with an approved graphite grease.
- All dowel bars 18"lg. @ 12" ctrs. shall be epoxy coated.
- Expansion joint A-2 from St. Louis County pavement construction details, shall be allowed in addition to Type A and AA expansion joints.

CITY OF O'FALLON
ENGINEERING DEPARTMENT
O'FALLON, MISSOURI

PAVEMENT CONSTRUCTION DETAILS
JOINTS AND CURBS

PROJECT TITLE:
SOMMERSET ESTATES

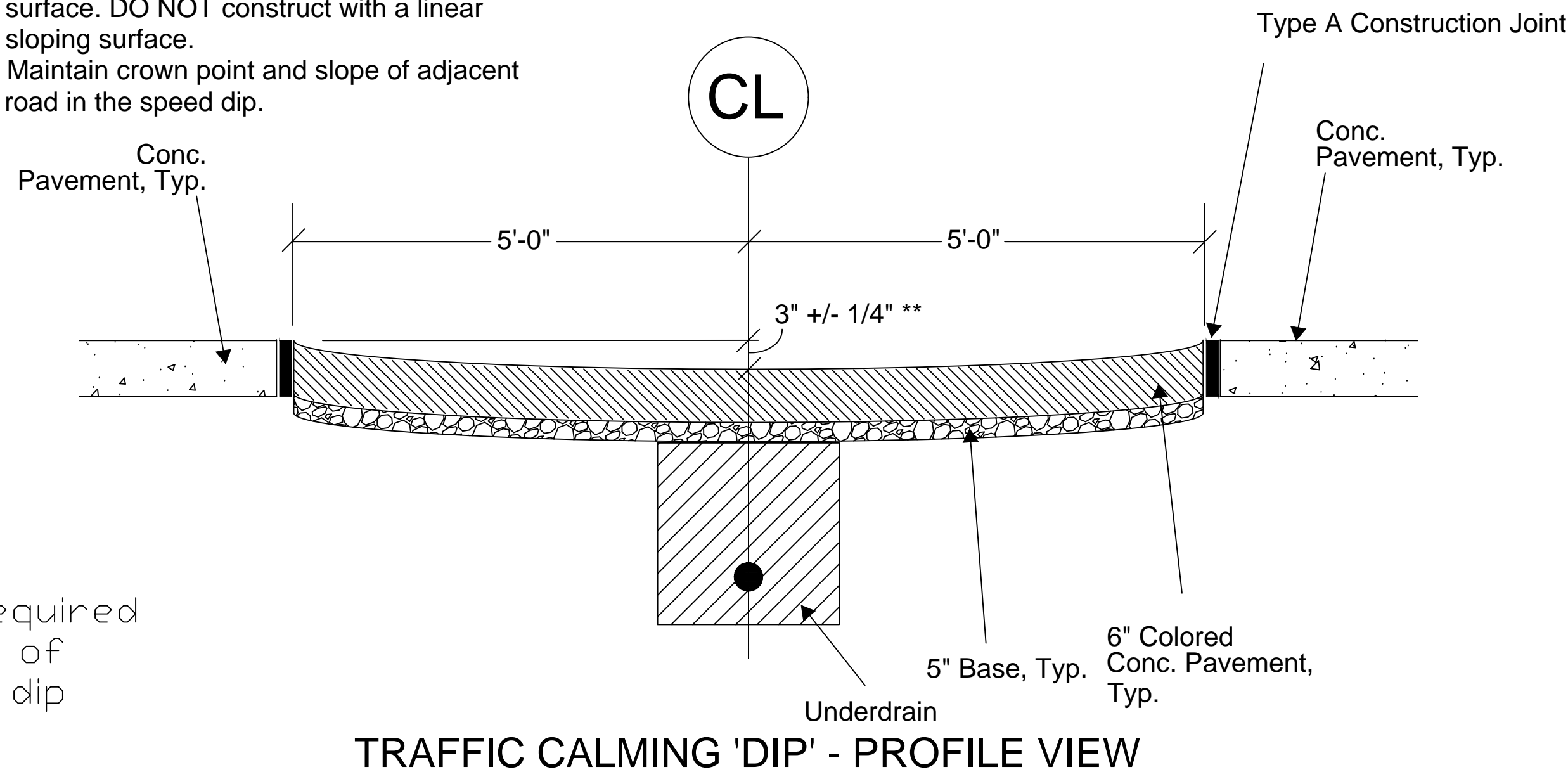
ENGINEERING PLANNING SURVEYING
221 Point West Blvd.
St. Charles, MO 63301
636-928-6562
FAX 928-1718



DISCLAIMER OF RESPONSIBILITY
I hereby specify that the documents intended to be authenticated by my seal are limited to this sheet, and I hereby disclaim any responsibility for all other drawings, specifications, estimates, reports or other documents or instruments relating to or intended to be used for any part or parts of the architectural or engineering project or survey.

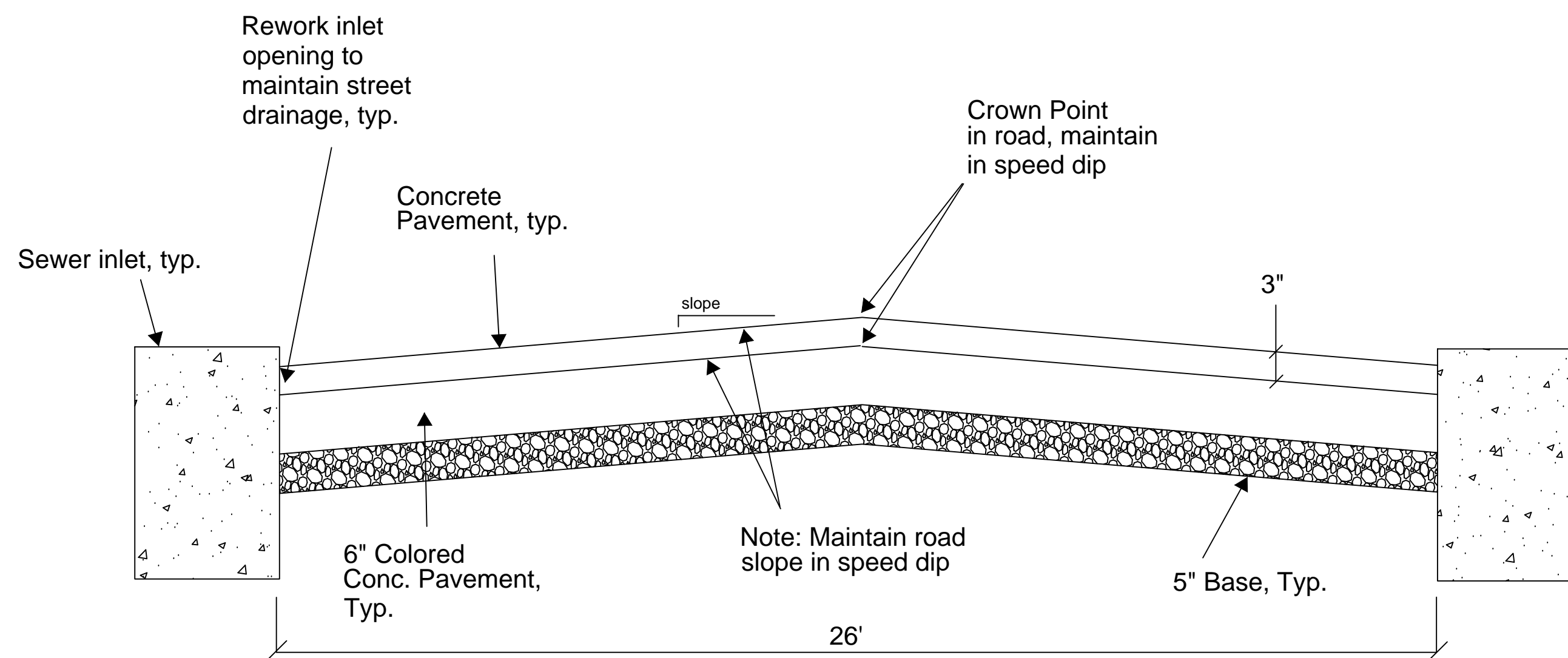
REVISIONS	
09/02/21	PWSD#2 & DUCKETT COMMENTS
09/10/21	PWSD#2 COMMENTS
09/27/21	CITY COMMENTS
10/11/21	CITY COMMENTS

**** NOTE **** - 3" depression in concrete is a concave surface. DO NOT construct with a linear sloping surface.
- Maintain crown point and slope of adjacent road in the speed dip.



TRAFFIC CALMING 'DIP' - PROFILE VIEW

'DIP' signs required on each side of the road at dip location



TRAFFIC CALMING 'DIP' - FRONT VIEW

Developer / Owner:
KAPB, L.L.C.
410 Crestview Drive
O'Fallon, MO 63366
636-272-4200

PAVEMENT DETAILS

P+Z No. #21-003778
Approval Date: 09/23/2021

City No. RSP21-000005

Page No.