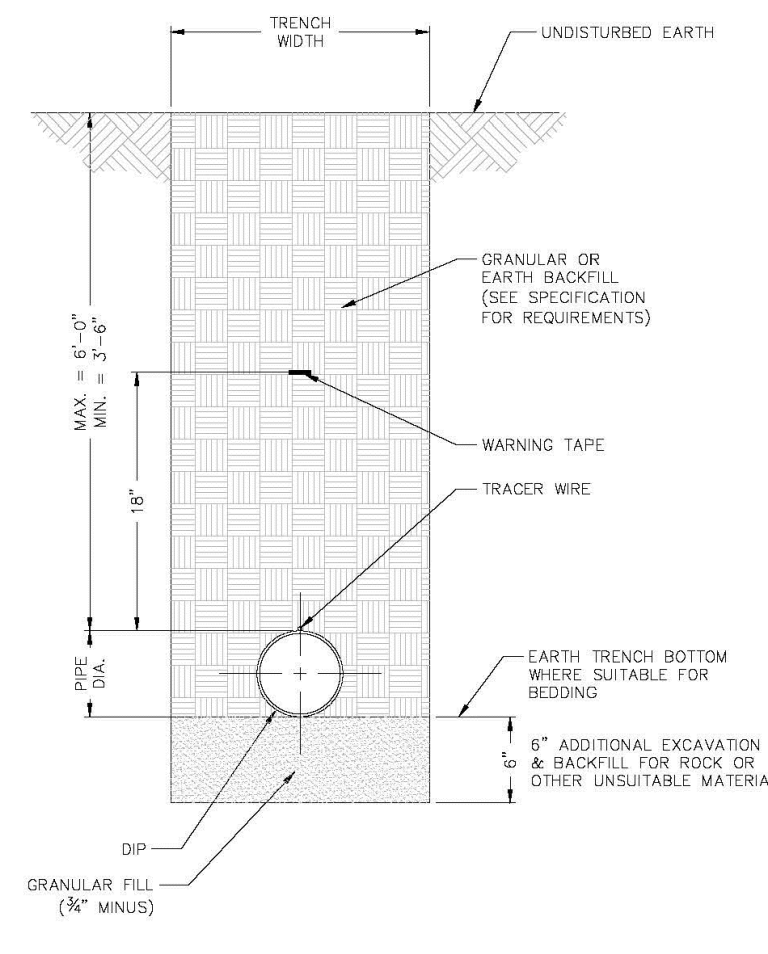
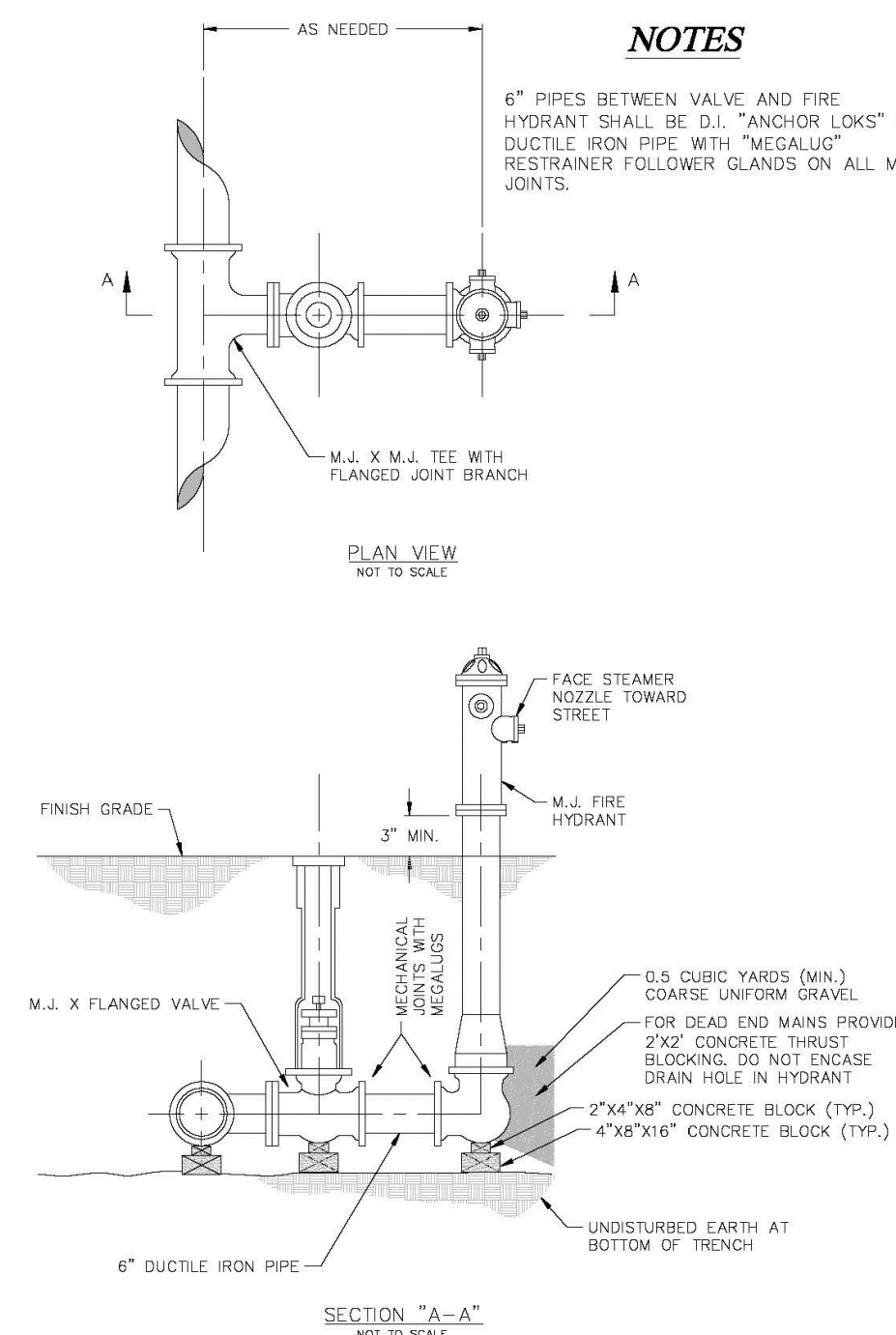


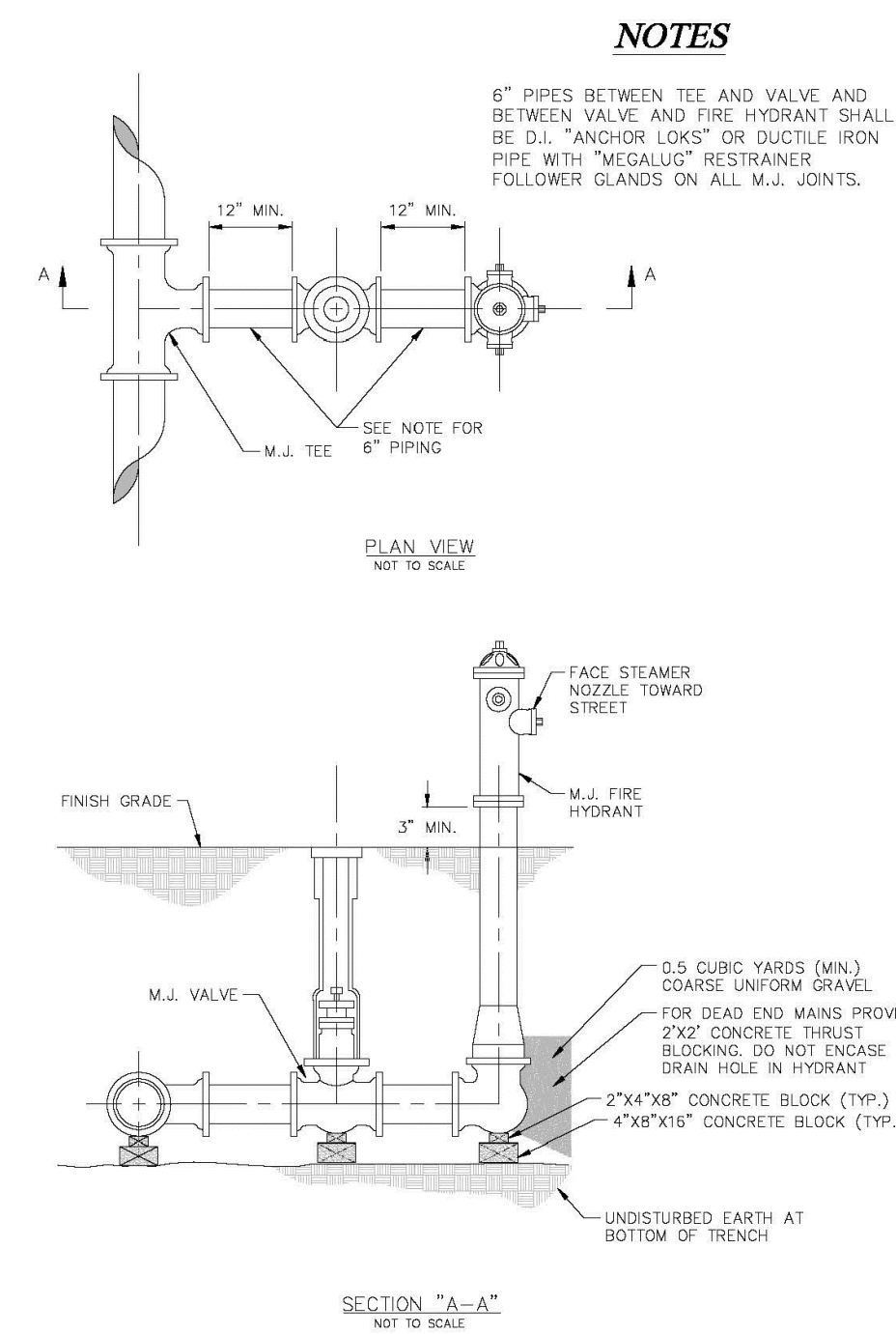
**NOTES**  
1) SEE SPECIFICATIONS FOR ADDITIONAL DETAILS FOR BEDDING AND BACKFILL.  
**TYPICAL TRENCH SECTION FOR PVC PIPE**  
**DETAIL "A"**  
PAGE 1 OF 2



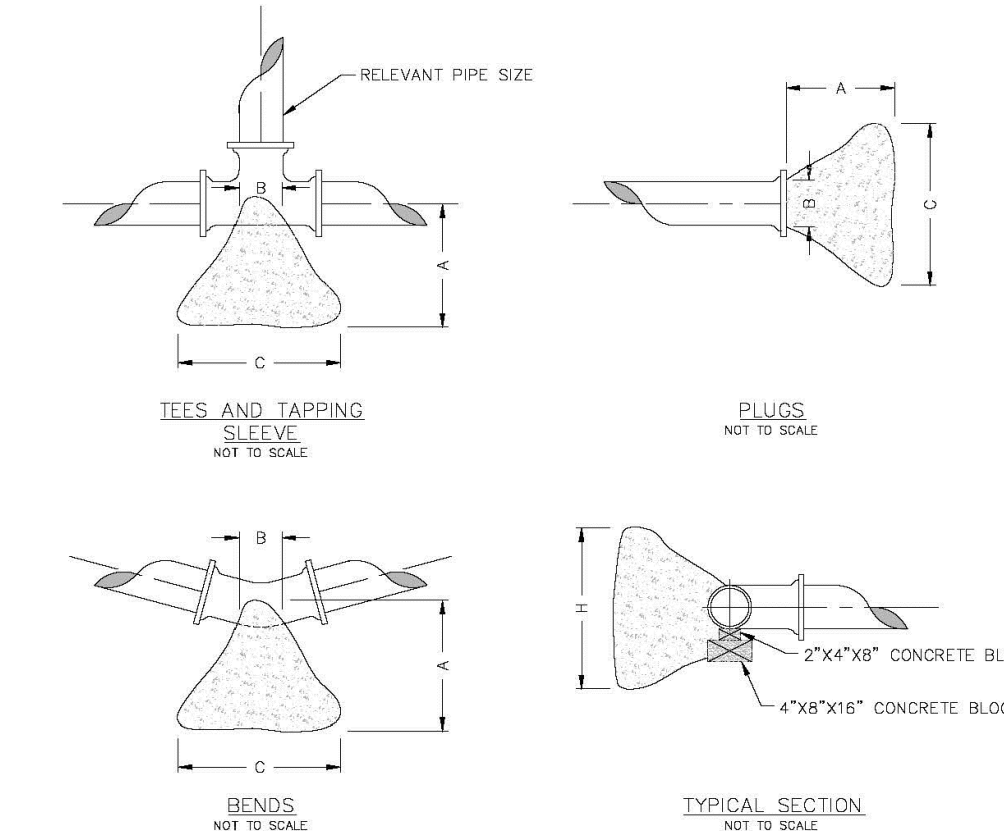
**NOTES**  
1) POLYWRAP REQUIRED FOR DUCTILE IRON PIPE  
2) SEE SPECIFICATIONS FOR ADDITIONAL DETAILS FOR BEDDING AND BACKFILL.  
**TYPICAL TRENCH SECTION FOR DUCTILE IRON PIPE**  
**DETAIL "A"**  
PAGE 2 OF 2



**FIRE HYDRANT DETAIL**  
**DETAIL "B"**  
PAGE 1 OF 3



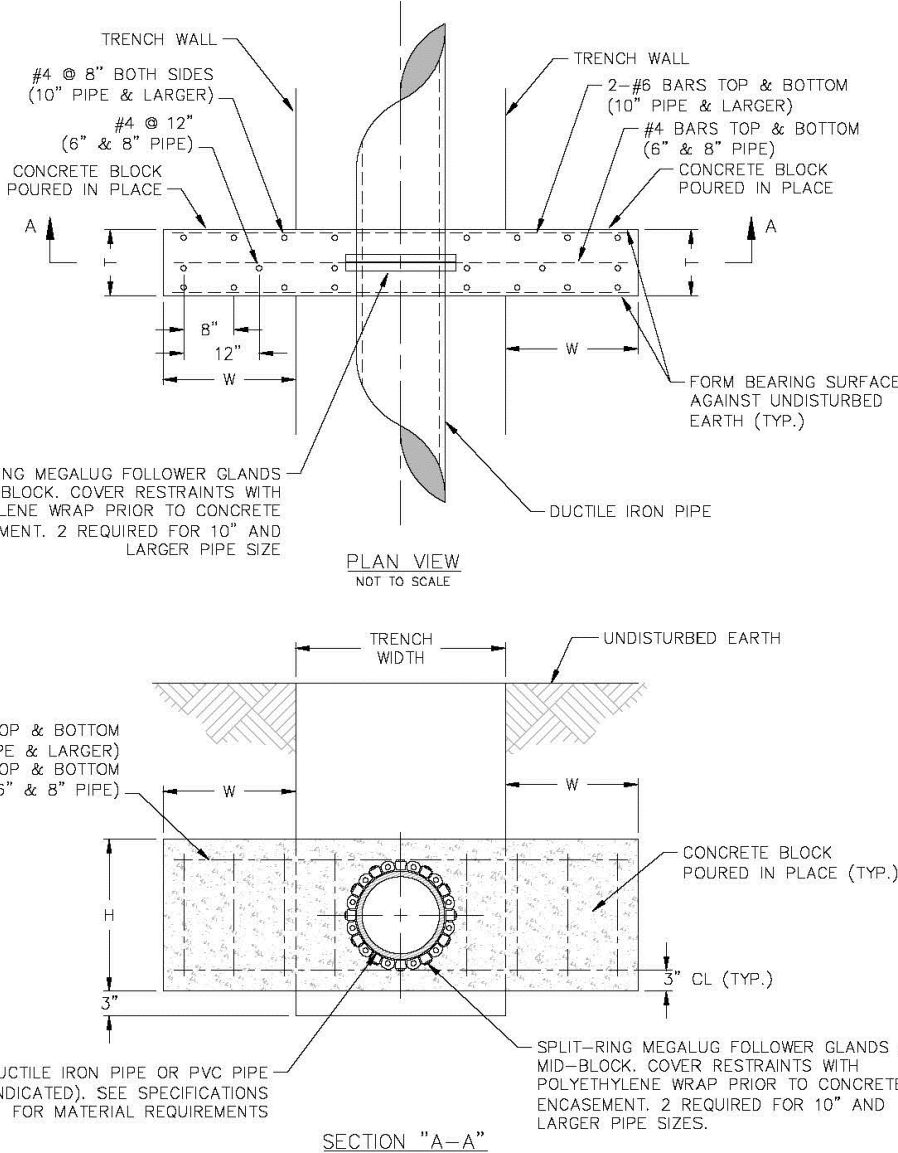
**FIRE HYDRANT DETAIL**  
**DETAIL "B"**  
PAGE 2 OF 3



**THRUST BLOCK DIMENSIONS - INCHES**

PIPE DIA.	ALL FTGS.			90 DEGREE BEND		45 DEGREE BEND		22-1/2 BEND		11-1/4 BEND	
	A	B	C	H	C	H	C	H	C	H	
4	14	4	24	12	26	15	18	12	12	12	12
6	16	6	36	18	36	24	30	18	24	12	12
8	20	8	36	30	42	36	36	24	24	18	18
10	20	10	48	36	56	36	36	36	28	24	18
12	24	12	68	36	82	42	52	36	40	24	28

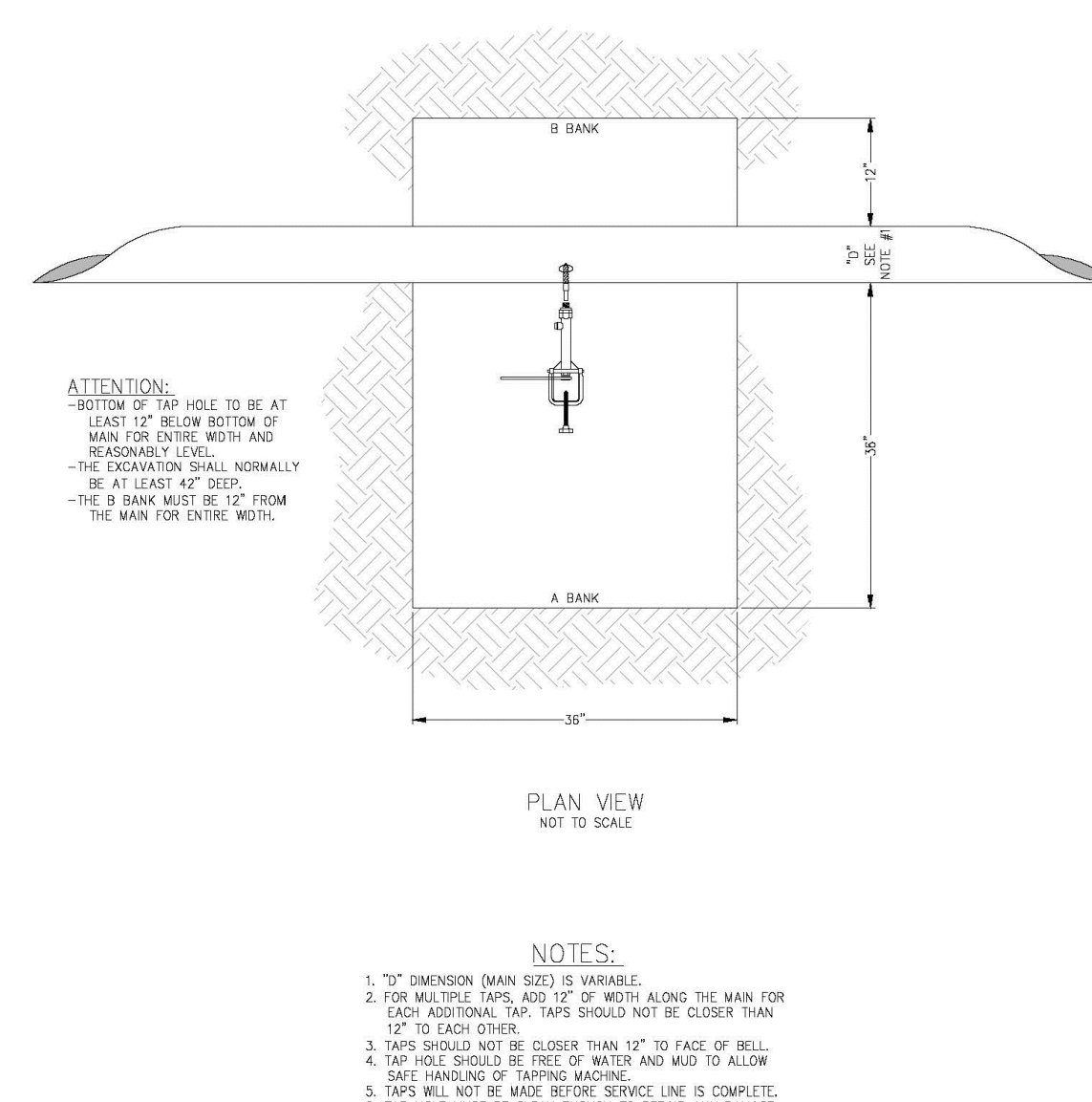
**NOTE**  
FOR FITTINGS LARGER THAN 12", SPECIAL RESTRAINT DESIGNS ARE REQUIRED.  
**HORIZONTAL THRUST BLOCKING**  
**DETAIL "C"**



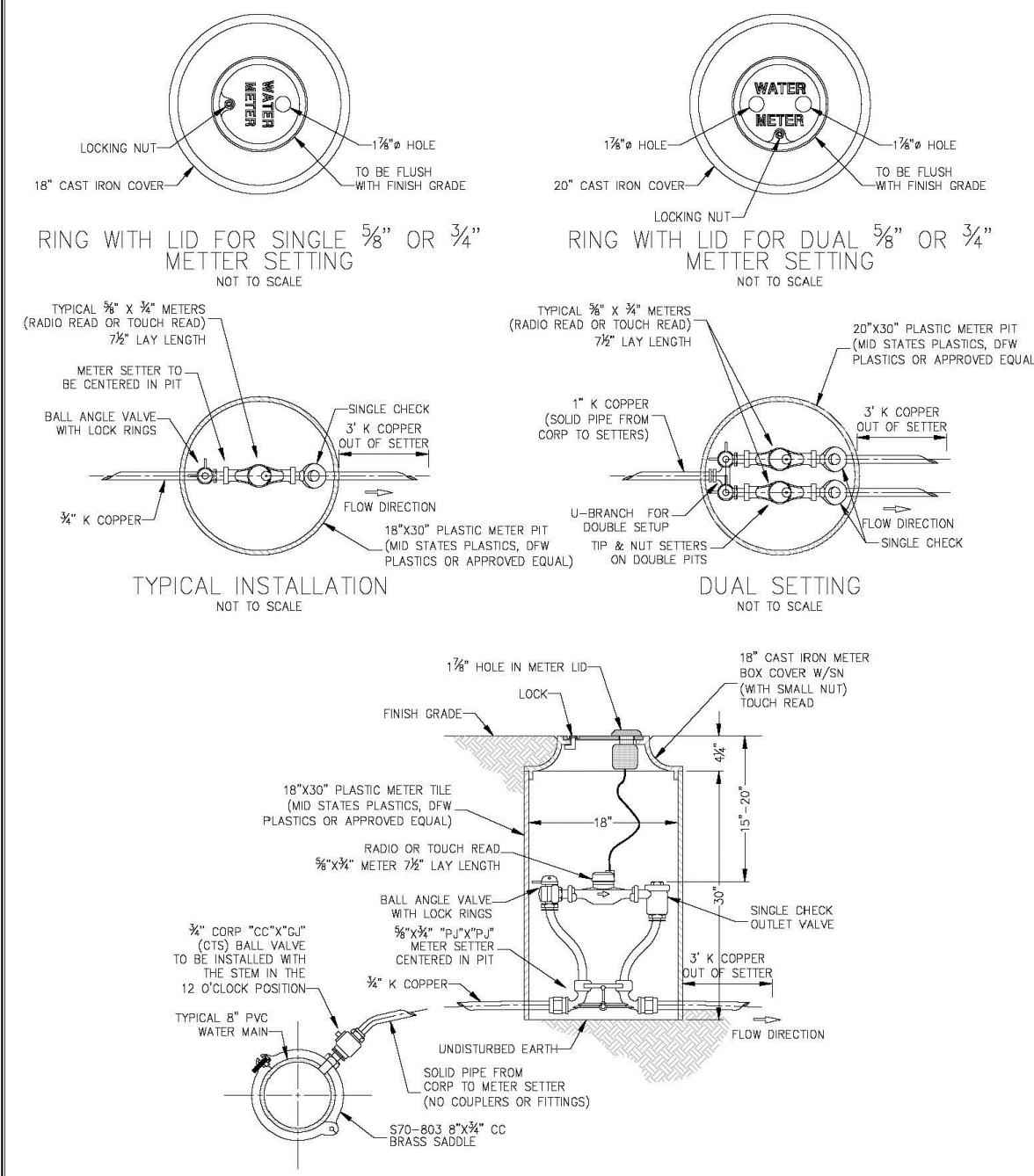
**NOTES**  
1) CONSTRUCT CROSS BLOCKS AT A MINIMUM OF 15' FROM CONNECTION POINT AND 15' FROM THE BELL END OF PIPE.  
2) CROSS BLOCKS SHALL BE PRE-POURED PRIOR TO SHUTDOWN AND CONNECTIONS.  
**CROSS BLOCK DIMENSIONS**

PIPE DIA. 1"	WIDTH 1"	HEIGHT 1"	THICKNESS 1"
4	12	12	12
6	24	24	12
8	24	24	12
10	36	36	18
12	36	36	18

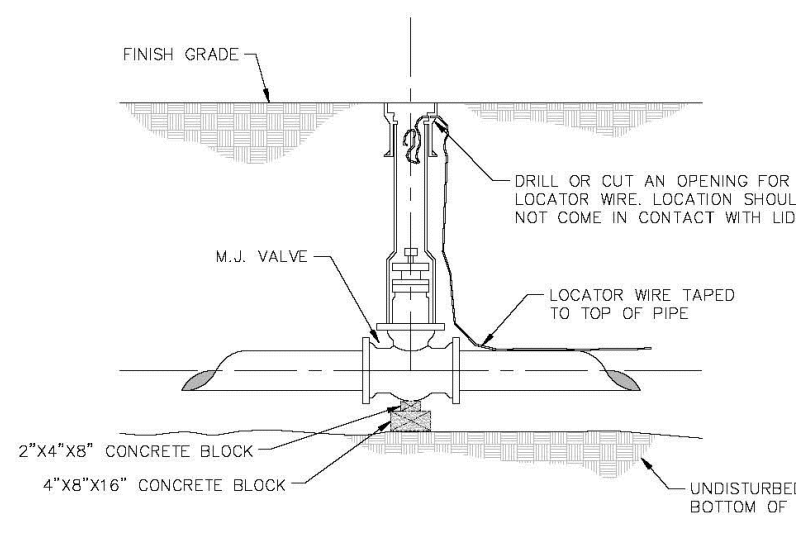
**CROSS BLOCK**  
**DETAIL "E"**



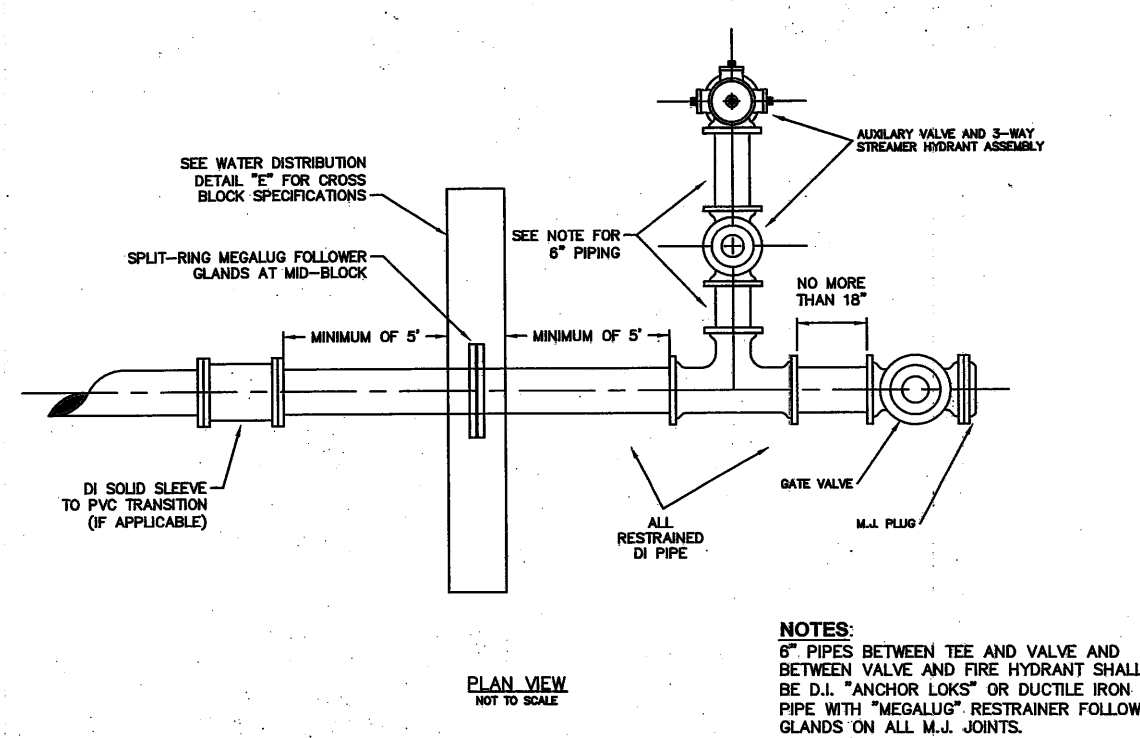
**TYPICAL 3/4" SERVICE CONNECTIONS TAP HOLE DIMENSIONS**  
**DETAIL "A"**  
NOT TO SCALE  
**PUBLIC WATER SUPPLY DISTRICT #2 OF SAINT CHARLES COUNTY**



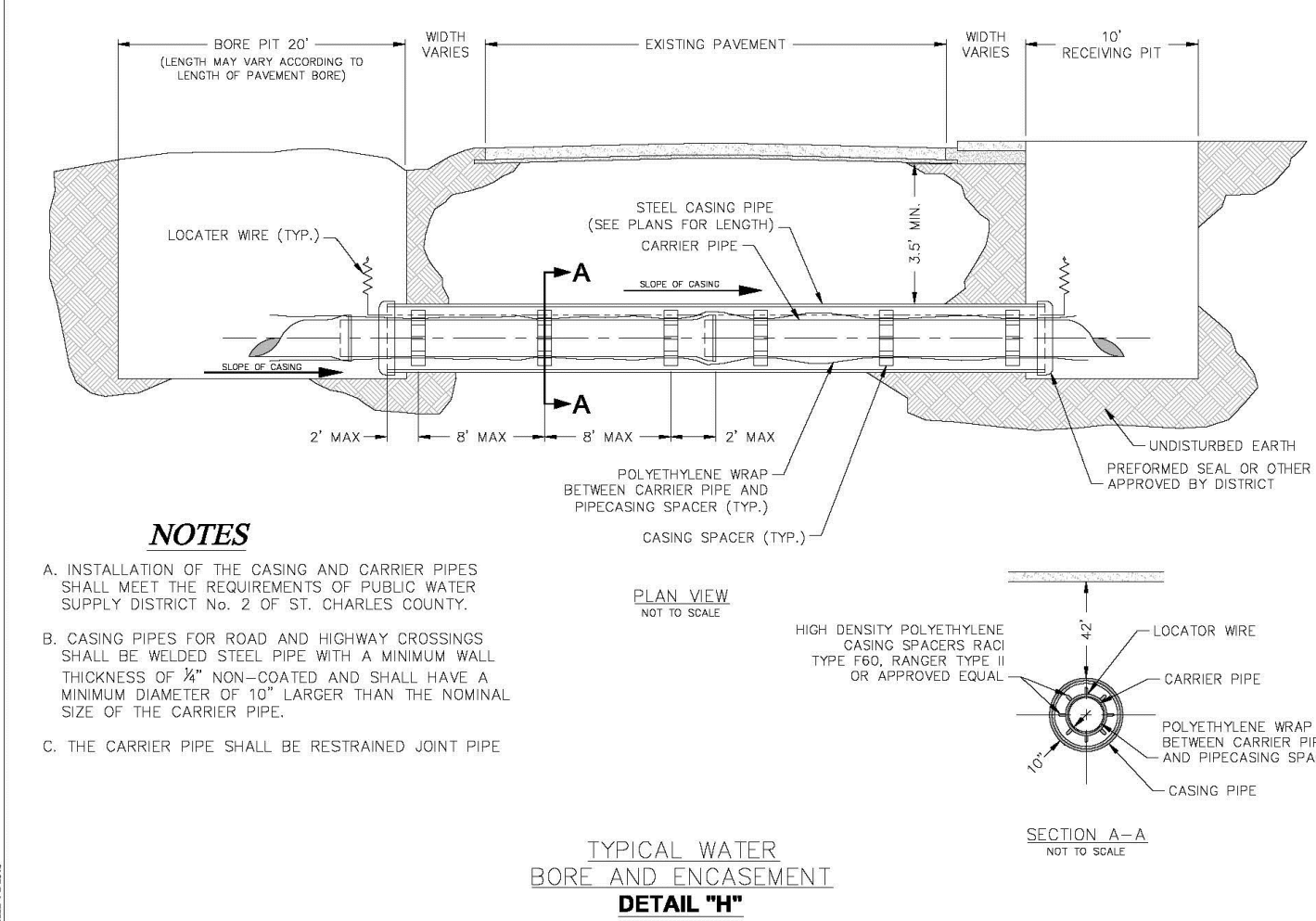
**TYPICAL 3/4" RESIDENTIAL WATER SERVICE**  
**DETAIL "B"**  
NOT TO SCALE  
**PUBLIC WATER SUPPLY DISTRICT #2 OF SAINT CHARLES COUNTY**



**GATE VALVE DETAIL**  
**DETAIL "D"**



**WATER MAIN TERMINATION DETAIL**



**NOTES**  
A. INSTALLATION OF THE CASING AND CARRIER PIPES SHALL MEET THE REQUIREMENTS OF PUBLIC WATER SUPPLY DISTRICT No. 2 OF ST. CHARLES COUNTY.  
B. CASING PIPES FOR ROAD AND HIGHWAY CROSSINGS SHALL BE WILDON STEEL PIPE WITH A MINIMUM WALL THICKNESS OF 3/8" NON-COATED AND SHALL HAVE A MINIMUM DIAMETER OF 12" LARGER THAN THE NOMINAL SIZE OF THE CARRIER PIPE.  
C. THE CARRIER PIPE SHALL BE RESTRAINED JOINT PIPE.  
**TYPICAL WATER BORE AND ENCASEMENT**  
**DETAIL "H"**

**ENGINEER'S SEAL DOES NOT APPLY TO DETAILS ON THIS SHEET**

**PROJECT TITLE:**  
**SOMMERSET ESTATES**

**ENGINEERING PLANNING SURVEYING**  
221 Point West Blvd.  
St. Charles, MO 63301  
636-928-6562 FAX 636-1718

**Disclaimer of Responsibility:**  
I hereby specify that the documents intended to be authorized by my seal are limited to this sheet, and I hereby disclaim any responsibility for all other drawings, specifications, estimates, reports or other documents or instruments relating to or intended to be used for any part or parts of the architecture or engineering project or survey.

**REVISIONS**

DATE	BY	DESCRIPTION
09/02/21	PWSD#2 & DUCKETT	COMMENTS
09/10/21	PWSD#2	COMMENTS
09/27/21	CITY	COMMENTS
10/11/21	CITY	COMMENTS

**Developer / Owner:**  
KAPB, L.L.C.  
410 Crestview Drive  
O'Fallon, MO 63366  
636-272-4200

**WATER DETAILS**

**P+Z No.** #21-003778  
**Approval Date:** 09/23/2021  
**City No.** RSP21-000005  
**Page No.** 21 of 23

**Issue Date:** 07/26/2021