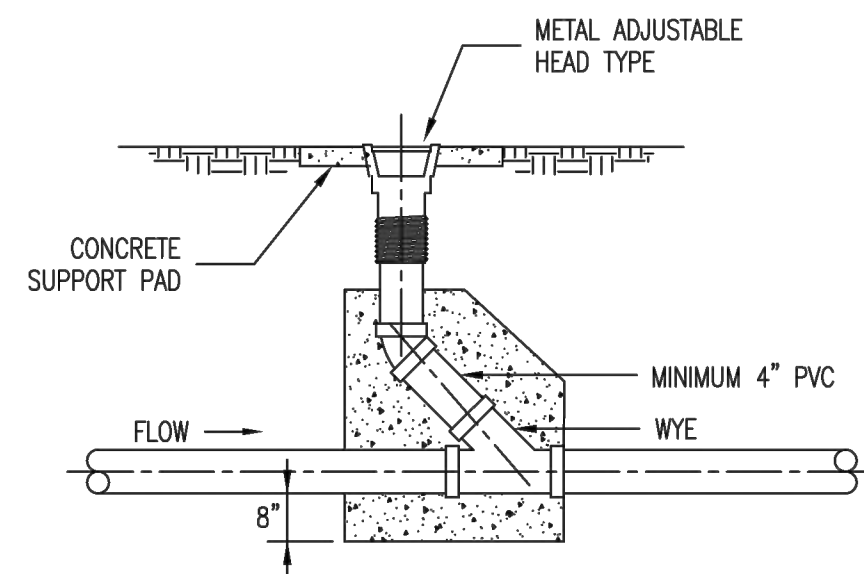
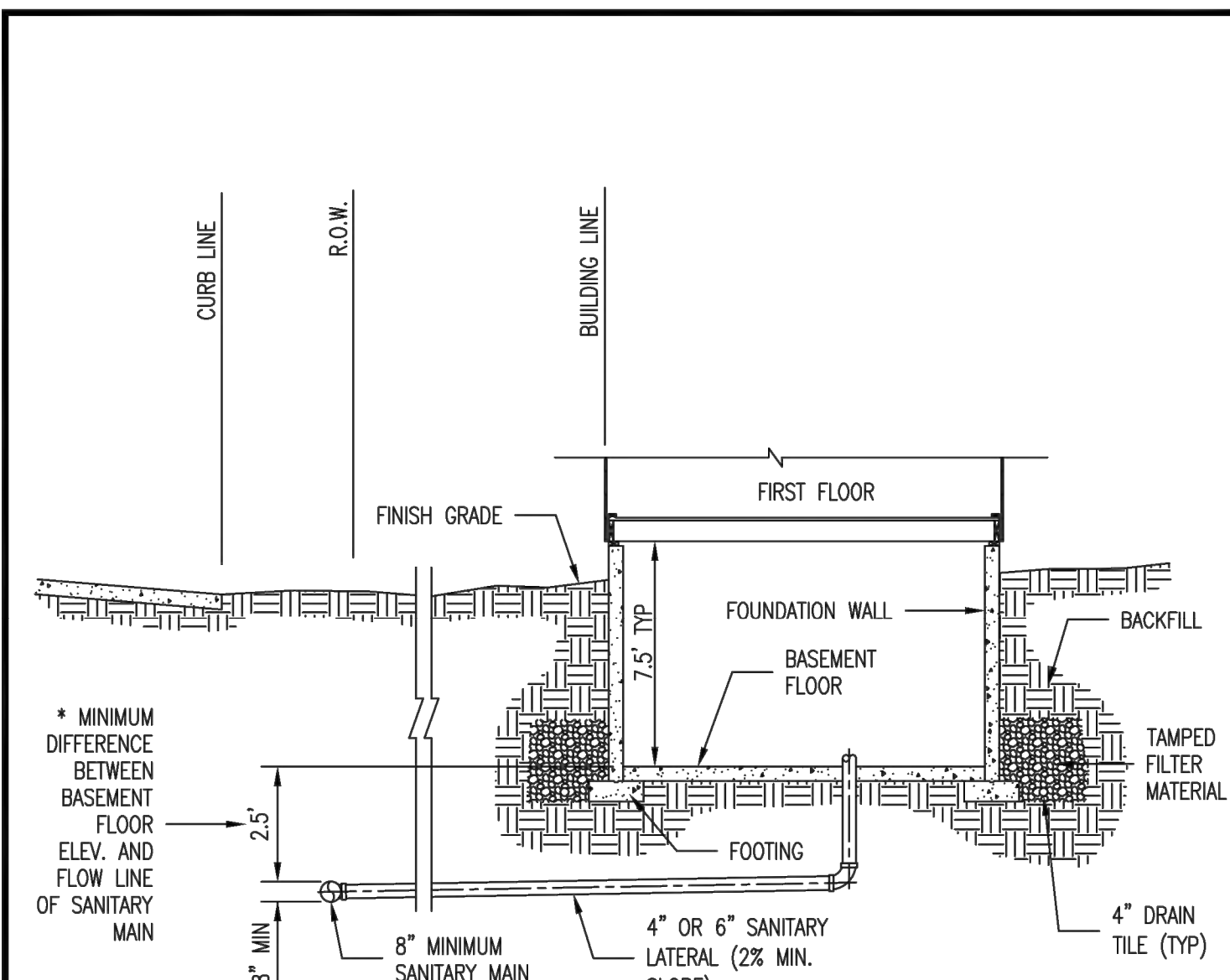


METAL FRAME AND COVER TYPE CLEANOUT



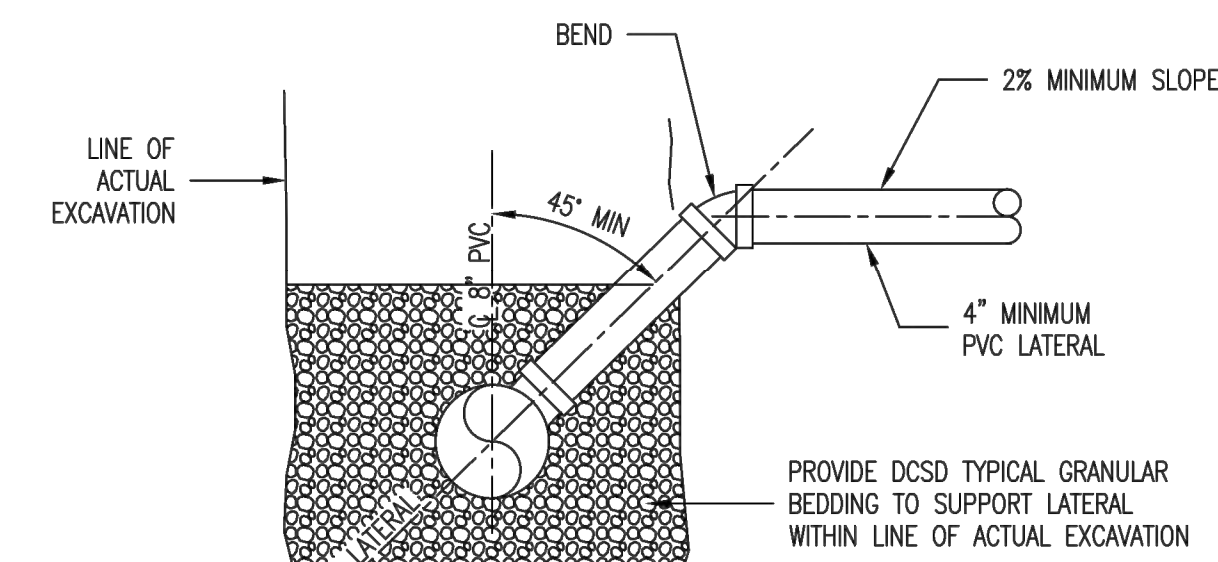
ADJUSTABLE HEAD TYPE CLEANOUT

Duckett Creek Sanitary District
 TYPICAL SEWER LATERAL CLEANOUT DETAIL
 Dwn By: BSM App By: KLA Detail No. 25
 Ckd By: MDOB Date: DEC. 2015

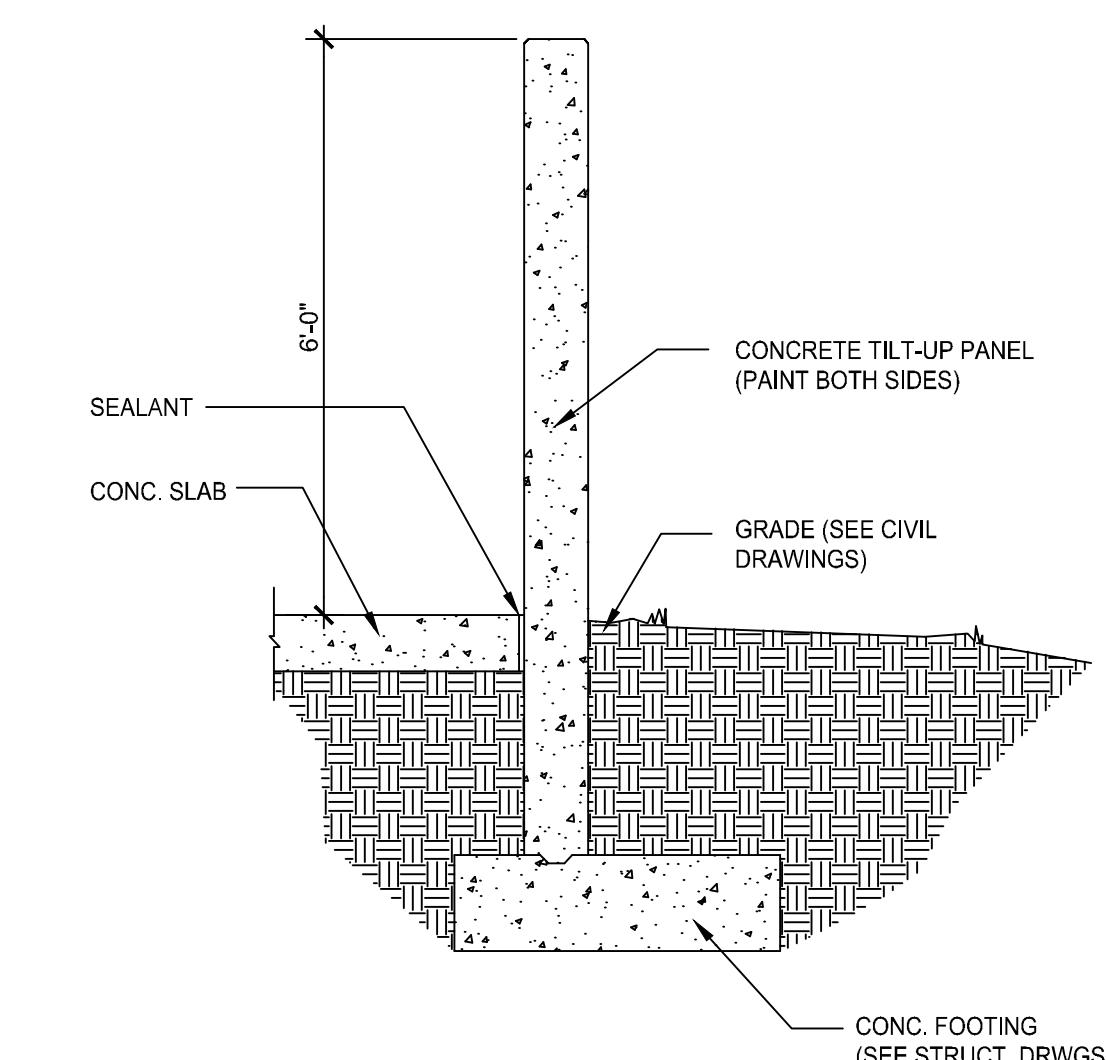


*NOTE: DIFFERENCE IN DEPTH INCREASES WITH PIPE SIZE

Duckett Creek Sanitary District
 TYPICAL SANITARY SEWER LATERAL PROFILE
 Dwn By: BSM App By: KLA Detail No. 26
 Ckd By: MDOB Date: DEC. 2015



Duckett Creek Sanitary District
 SANITARY SEWER LATERAL RISER DETAIL
 Dwn By: BSM App By: KA Detail No. 27
 Ckd By: MDOB Date: DEC. 2015



15 SECTION
 A1.01 SCALE: 1/2" = 1'-0"

SOURCE ONE SOLUTIONS CONSTRUCTION PLAN
 PART OF ADJUSTED LOT 6 OF A BOUNDARY ADJUSTMENT PLAT THREE KEATON CORPORATE PARK PLAT THREE AND THE JAMES KNAUST TRACT, ACCORDING TO THE PLAT THEREOF, RECORDED IN PLAT BOOK 45, PAGE 352, WITHIN U.S. SURVEY 1669, TOWNSHIP 46 NORTH, RANGE 3 EAST, CITY OF O'FALLON, ST. CHARLES COUNTY, MISSOURI

Civil & Environmental Consultants, Inc.
 3000 Little Hills Expressway, Suite 102
 St. Charles, MO 63301
 314-656-4566 · 866-250-3679
 www.cecinco.com



JAMES R. PIFER, JR., PE
 #PE-201200797
 PROFESSIONAL CIVIL ENGINEER
 *HAND SIGNATURE ON FILE

APP	DRK	DRK	381-945
DRAWN BY:	CHECKED BY:	APPROVED BY:	PROJECT NO.

Developer / Owner Information
 SOURCE ONE SOLUTIONS
 c/o KEYSTONE CONSTRUCTION CO.
 633 Spirit Valley Central Drive
 Chesterfield, MO 63005

CONSTRUCTION DETAILS

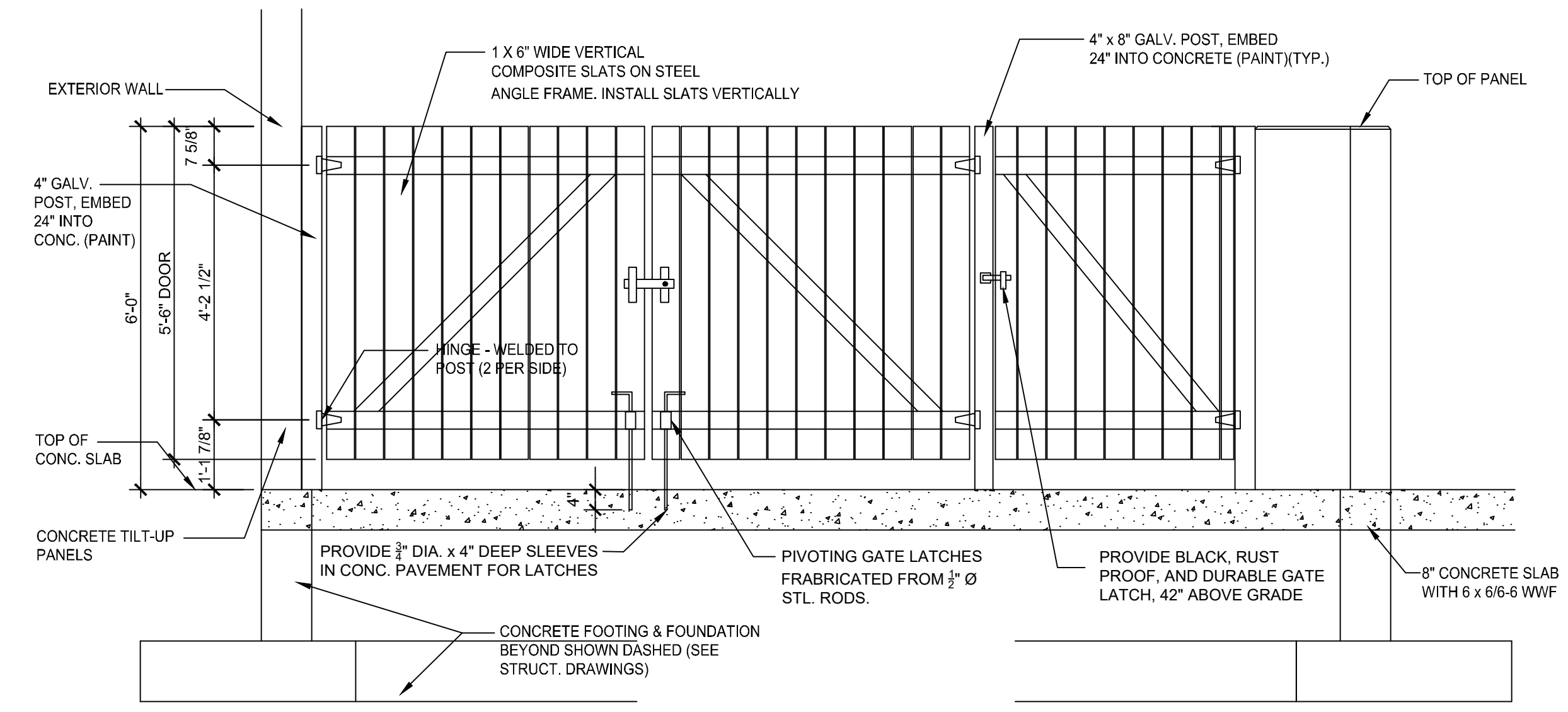
P+Z No. 23-00786
 Approval Date 08/03/2023
 Permit No.

Page No. **C801**

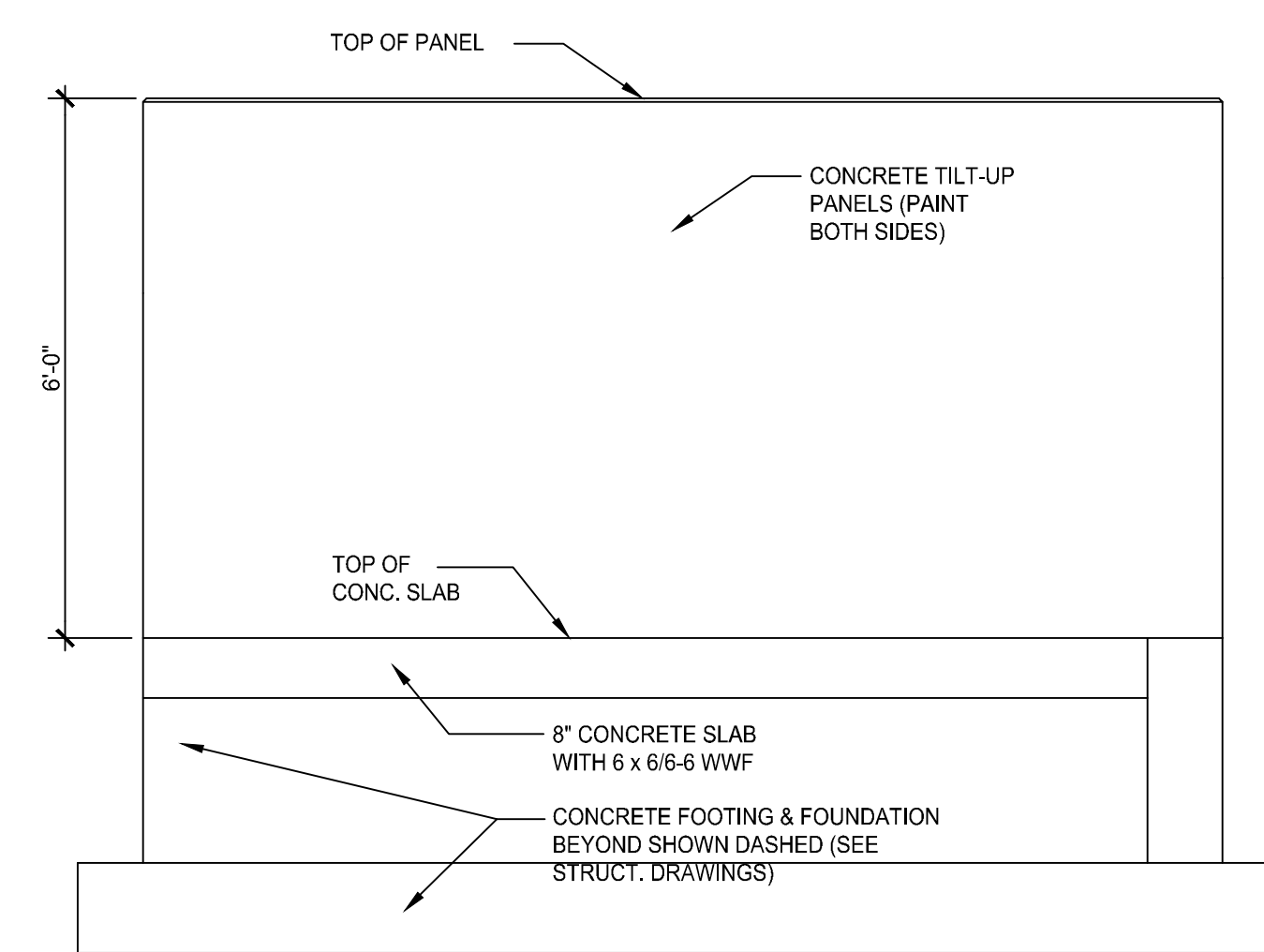
ParkTastic
 TITLE: Wide U-Bike Rack
 2-7/8" OD - InGround Version
 SIZE DWG. NO. 766br100
 WEIGHT: SHEET 6 OF 6

PROPRIETARY AND CONFIDENTIAL: THE INFORMATION CONTAINED IN THIS DRAWING IS THE SOLE PROPERTY OF Park Warehouse, LLC. 5301 North Federal Highway, Suite 140, Boca Raton, FL. ANY REPRODUCTION IN PART OR AS A WHOLE WITHOUT THE WRITTEN PERMISSION OF Park Warehouse, LLC, 5301 North Federal Highway, Suite 140, Boca Raton, FL IS PROHIBITED.

CADWorksPro
 Design by: ghm@cadworkspro.com
 1147 Brook Forest Ave, Suite 201 (Overland), IL 60054



19 TRASH ENCLOSURE
 A1.01 SCALE: 1/2" = 1'-0"



10 TRASH ENCLOSURE
 A1.01 SCALE: 1/2" = 1'-0"

- NOTES:**
- REFER TO SHEET C001 FOR GENERAL NOTES AND ABBREVIATIONS.
 - CONTRACTOR SHALL REFER TO OTHER PLANS WITHIN THIS CONSTRUCTION SET FOR OTHER PERTINENT INFORMATION. IT IS NOT THE ENGINEER'S INTENT THAT ANY SINGLE PLAN SHEET IN THIS SET OF DOCUMENTS FULLY DEPICT ALL WORK ASSOCIATED WITH THIS PROJECT.