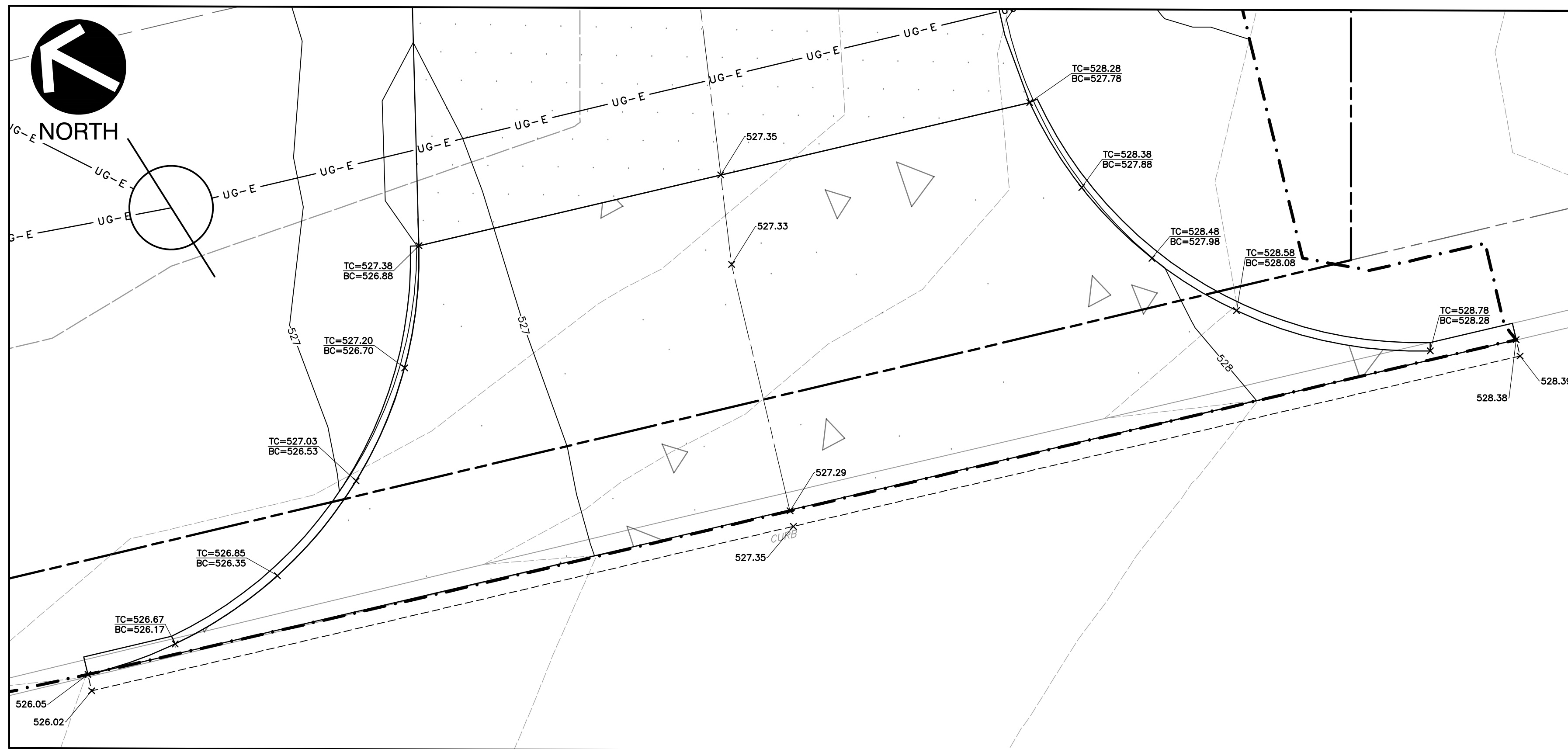
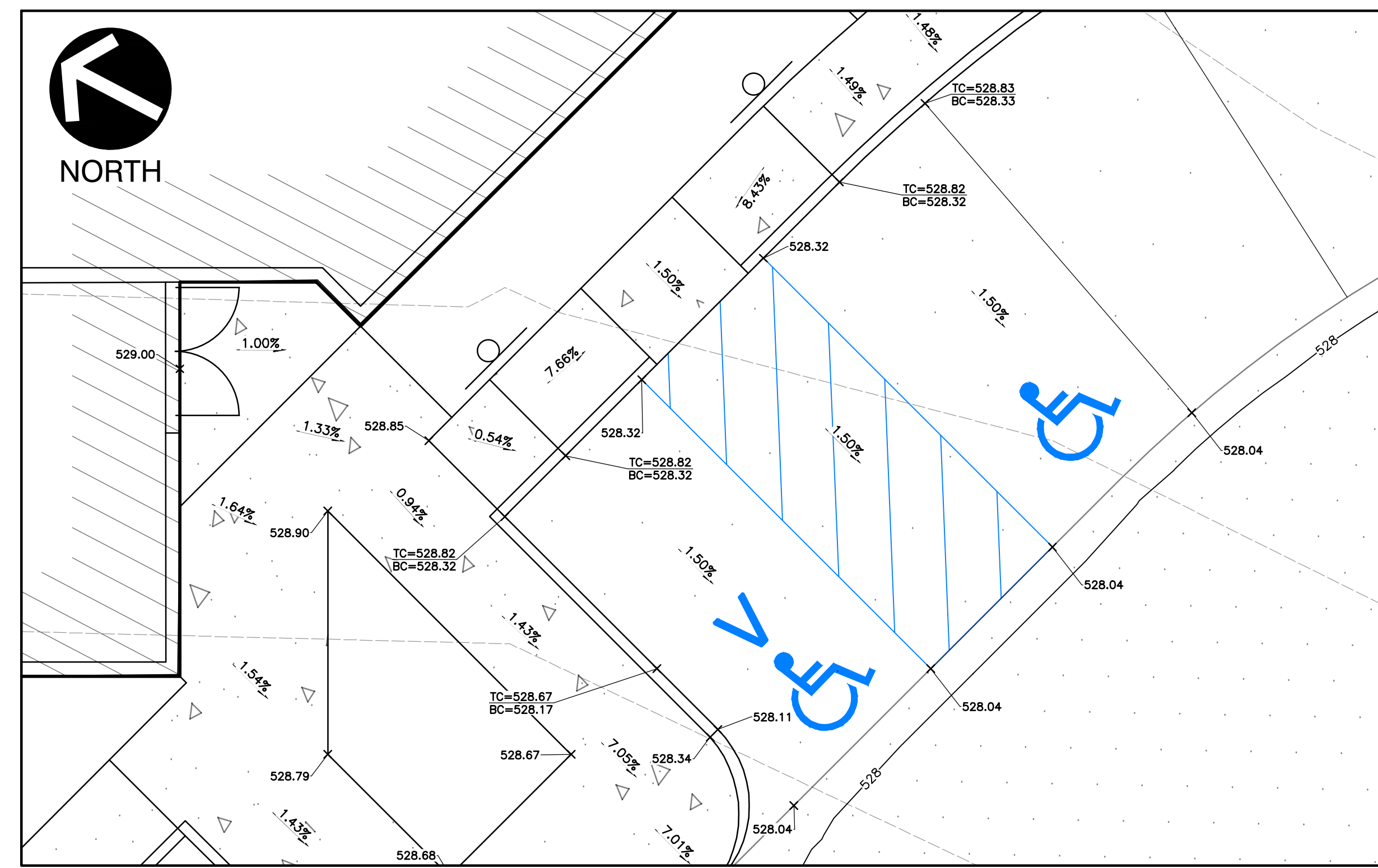


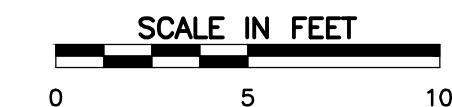
NORTH ENTRANCE DETAIL PLAN



SOUTH ENTRANCE DETAIL PLAN



ACCESSIBLE PARKING DETAIL PLAN



NOTES:

- REFER TO SHEET C001 FOR GENERAL NOTES AND ABBREVIATIONS.
- CONTRACTOR SHALL REFER TO OTHER PLANS WITHIN THIS CONSTRUCTION SET FOR OTHER PERTINENT INFORMATION. IT IS NOT THE ENGINEER'S INTENT THAT ANY SINGLE PLAN SHEET IN THIS SET OF DOCUMENTS FULLY DEPICT ALL WORK ASSOCIATED WITH THIS PROJECT.

**SOURCE ONE SOLUTIONS
CONSTRUCTION PLAN**
PART OF ADJUSTED LOT 6 OF A
BOUNDARY ADJUSTMENT PLAT THREE
KEATON CORPORATE PARK PLAT THREE
AND THE JAMES KNAUST TRACT,
RECORDED IN PLAT BOOK 45, PAGE 352,
WITHIN U.S. SURVEY 1669, TOWNSHIP 46
NORTH, RANGE 3 EAST, CITY OF
O'FALLON, ST. CHARLES COUNTY,
MISSOURI

CEC
**Civil & Environmental
Consultants, Inc.**
3000 Little Hills Expressway, Suite 102
St. Charles, MO 63301
314-656-4566 • 866-250-3679
www.cecinc.com



JAMES R. PIPER, JR., PE
#PE-2012006797
PROFESSIONAL CIVIL ENGINEER
*HAND SIGNATURE ON FILE

DRAWN BY:	JRP
CHECKED BY:	DRK
APPROVED BY:	DRK
PROJECT NO:	381-045

Developer / Owner Information
SOURCE ONE SOLUTIONS
c/o KEYSTONE CONSTRUCTION CO.
633 Spirit Valley Central Drive
Chesterfield, MO 63005

GRADING PLAN DETAILS

P+Z No. 23-007186
Approval Date 08/03/2023
Permit No.

Page No.
C302