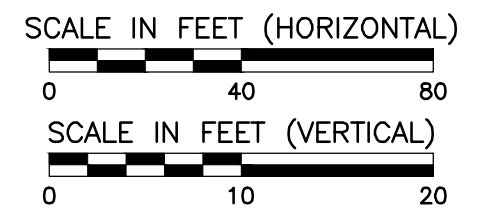
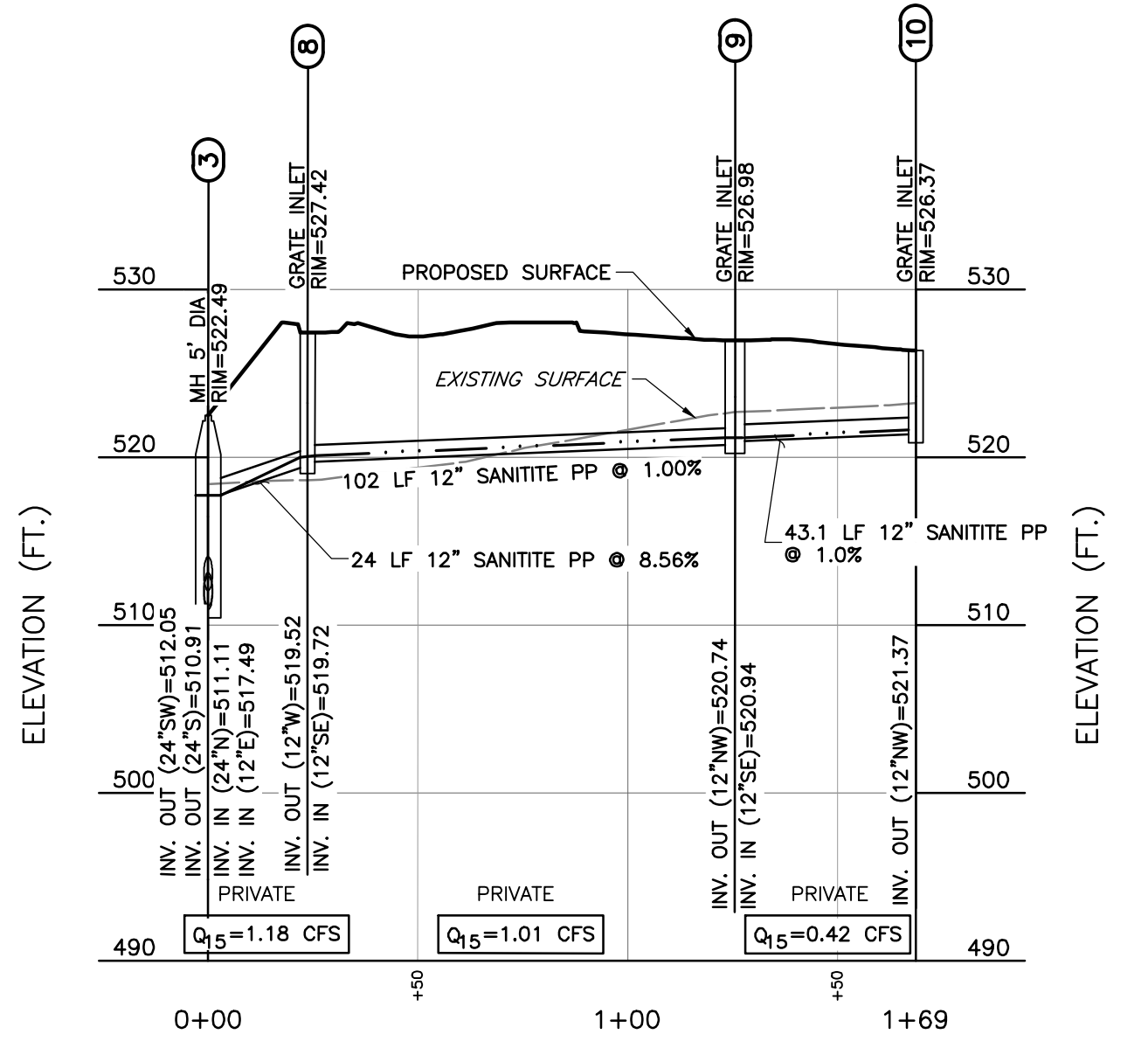


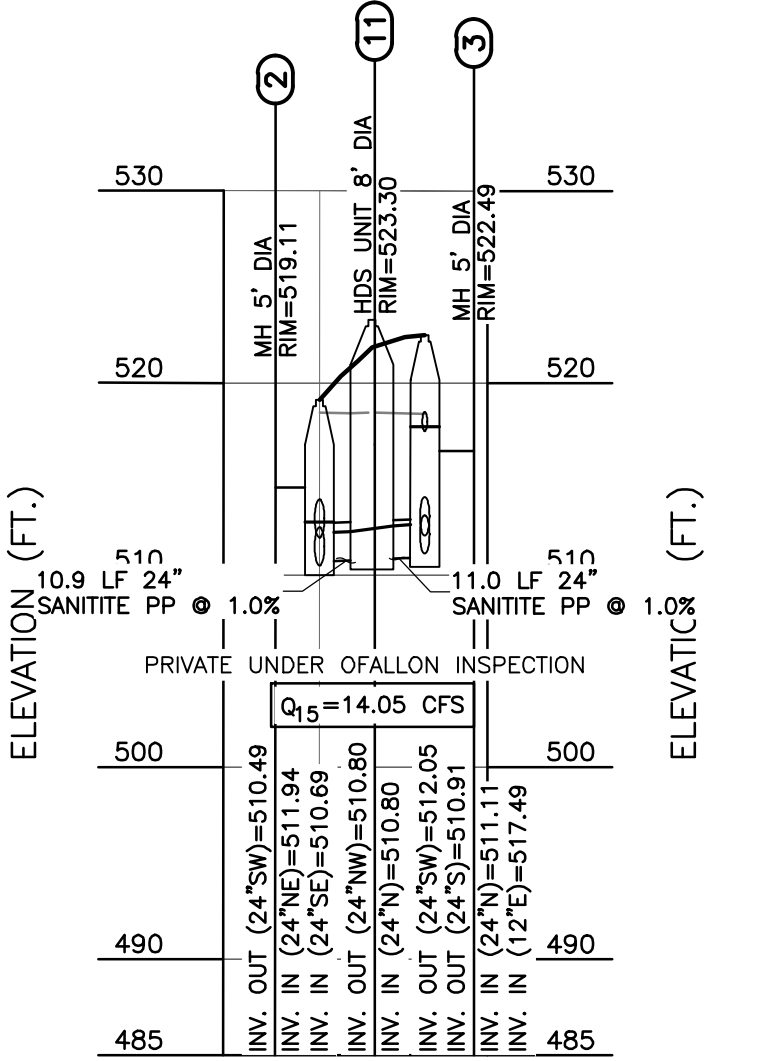
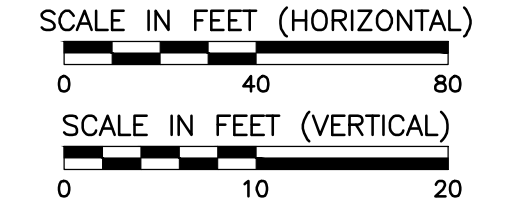
STORM PROFILE 1 PROFILE



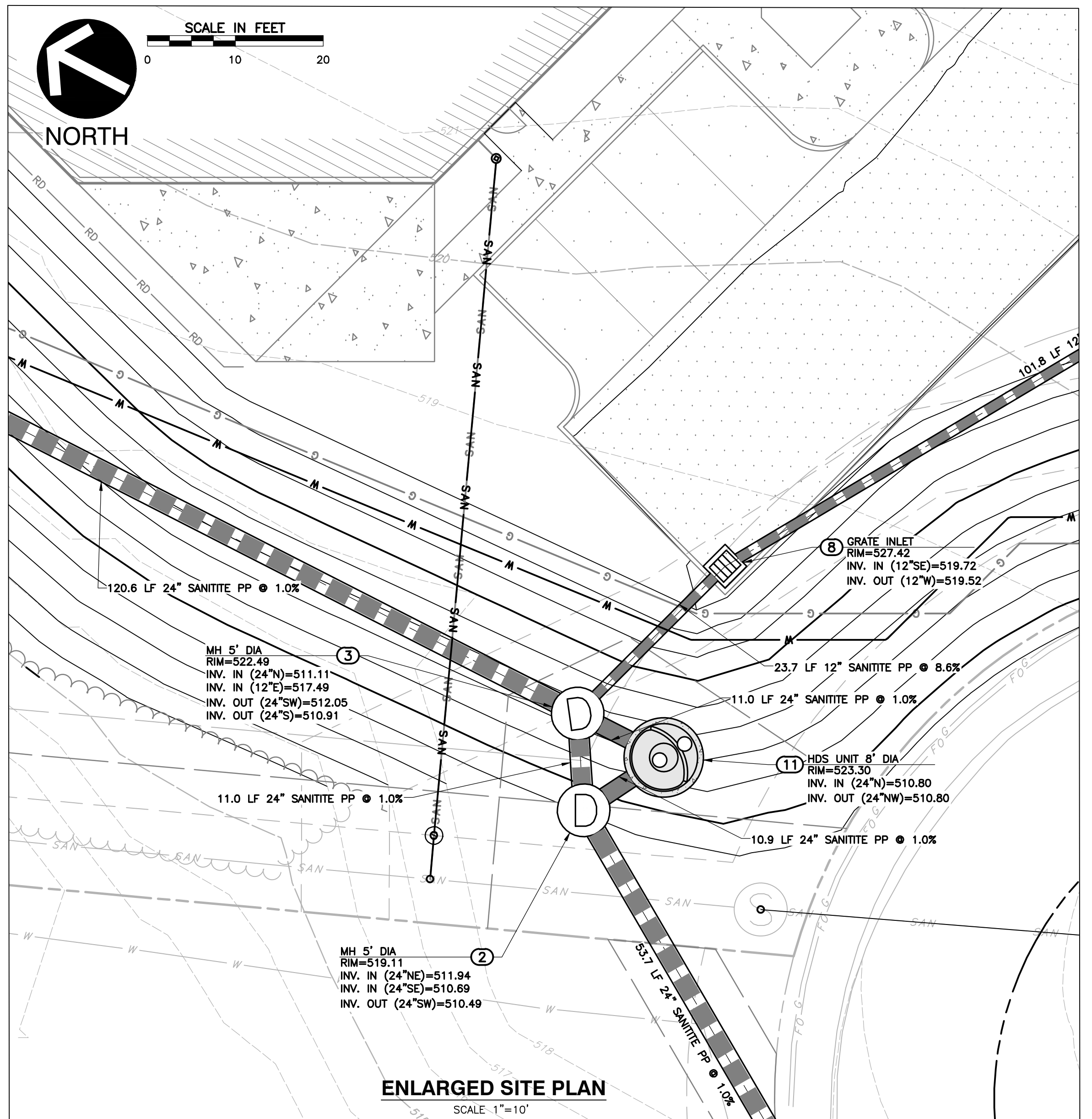
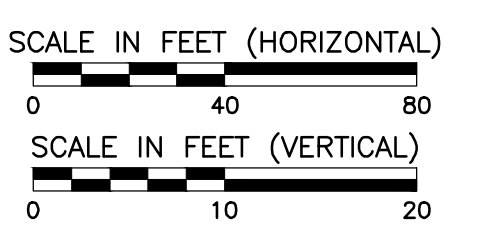
NOTE: ALL STORM INLETS SHALL BE MARKED. "PEEL AND STICK" ADHESIVE PADS WILL NOT BE ALLOWED. ACP INTERNATIONAL 3 7/8 INCH EPOXY CRYSTAL CAP NO DUMPING DRAINS TO WATERWAYS (SD--WC) DAS MANUFACTURING, INC. 4 INCH EPOXY STANDARD STYLE NO DUMPING DRAINS TO STREAM (#SDS)



STORM PROFILE 2 PROFILE

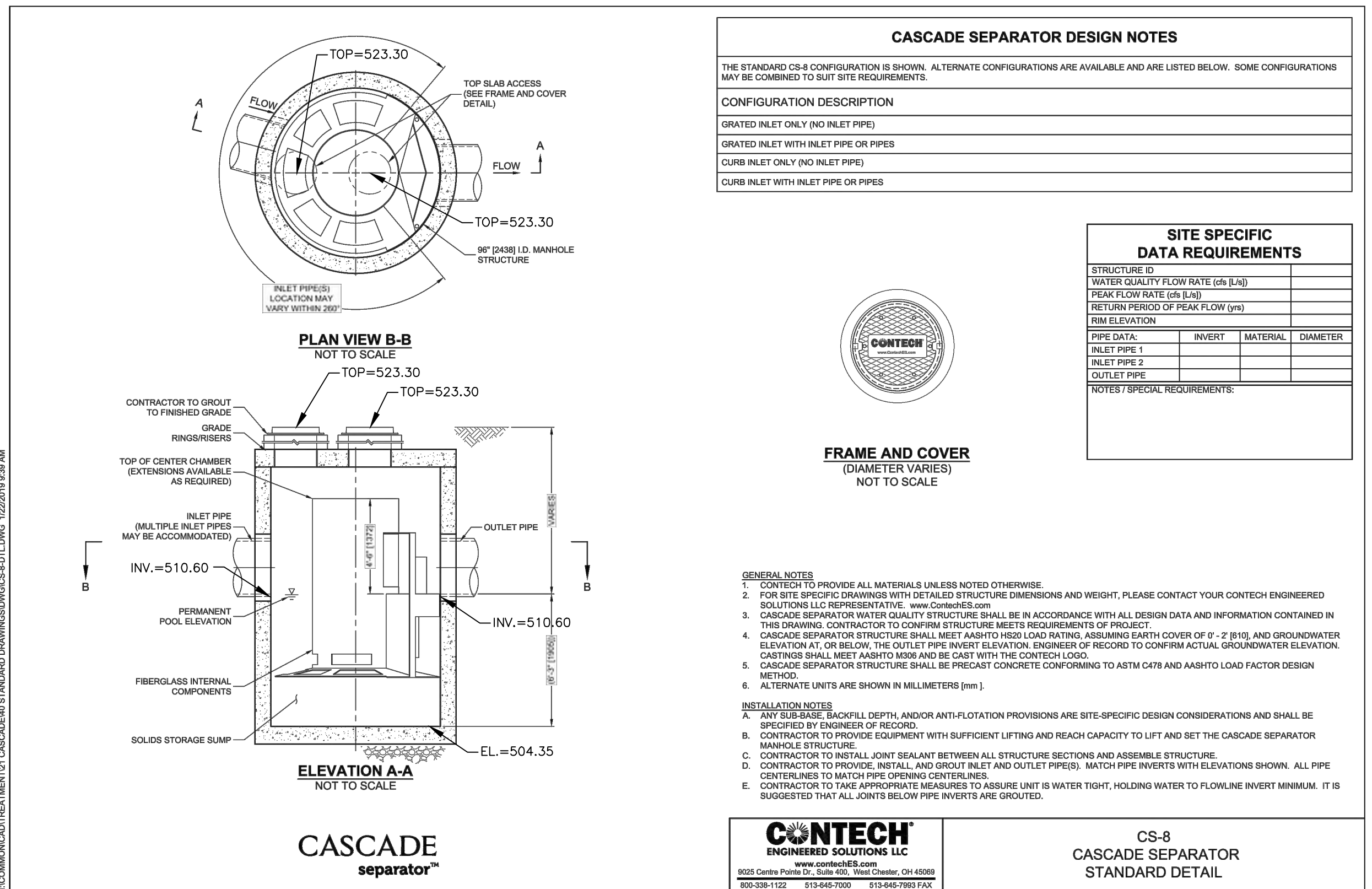


HDS PROFILE PROFILE



ENLARGED SITE PLAN

SCALE: 1"=10'



(OR APPROVED EQUAL)

NOTES:
 1. REFER TO SHEET C001 FOR GENERAL NOTES AND ABBREVIATIONS.
 2. CONTRACTOR SHALL REFER TO OTHER PLANS WITHIN THIS CONSTRUCTION SET FOR OTHER PERTINENT INFORMATION. IT IS NOT THE ENGINEER'S INTENT THAT ANY SINGLE PLAN SHEET IN THIS SET OF DOCUMENTS FULLY DEPICT ALL WORK ASSOCIATED WITH THIS PROJECT.

SOURCE ONE SOLUTIONS CONSTRUCTION PLAN
 PART OF ADJUSTED LOT 6 OF A BOUNDARY ADJUSTMENT PLAT THREE KEATON CORPORATE PARK PLAT THREE AND THE JAMES KNAUTH TRACT, ACCORDING TO THE PLAT THEREOF, ACCORDING TO PLAT BOOK 45, PAGE 352, WITHIN U.S. SURVEY 1669, TOWNSHIP 46 NORTH, RANGE 3 EAST, CITY OF O'FALLON, ST. CHARLES COUNTY, MISSOURI

Civil & Environmental Consultants, Inc.
 3000 Little Hills Expressway, Suite 102
 St. Charles, MO 63301
 314-656-4566 · 866-250-3679
 www.cecinco.com

JAMES R. PIPER, JR., PE
 #PE-2012006797
 PROFESSIONAL CIVIL ENGINEER
 10/31/2023

JRP	DRK	DRK	381-945
DRAWN BY:	CHECKED BY:	APPROVED BY:	PROJECT NO:

Developer / Owner Information
SOURCE ONE SOLUTIONS
 c/o KEYSTONE CONSTRUCTION CO.
 633 Spirit Valley Central Drive
 Chesterfield, MO 63005

STORMWATER MANAGEMENT

P+Z No. 23-00786
Approval Date 08/03/2023
Permit No.

Page No. C401