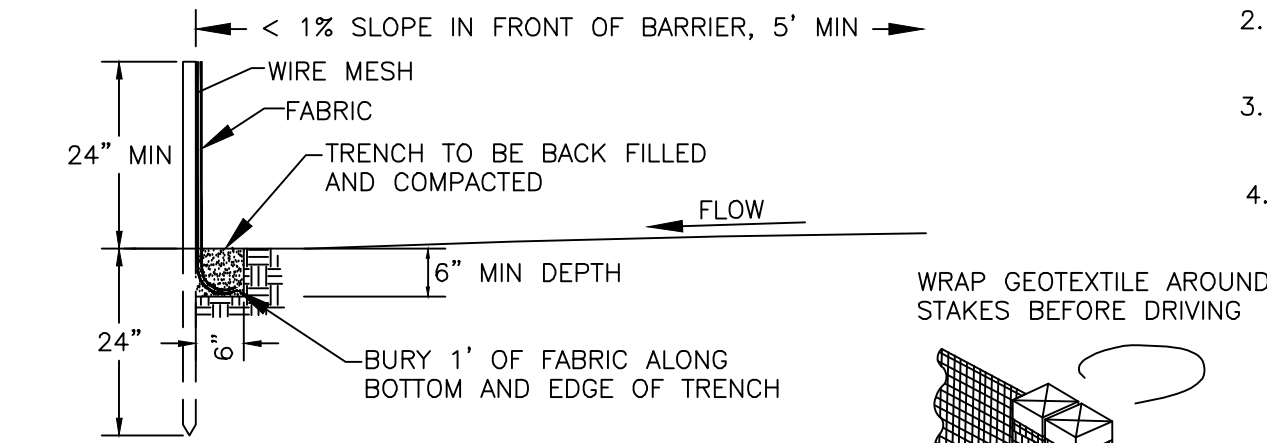
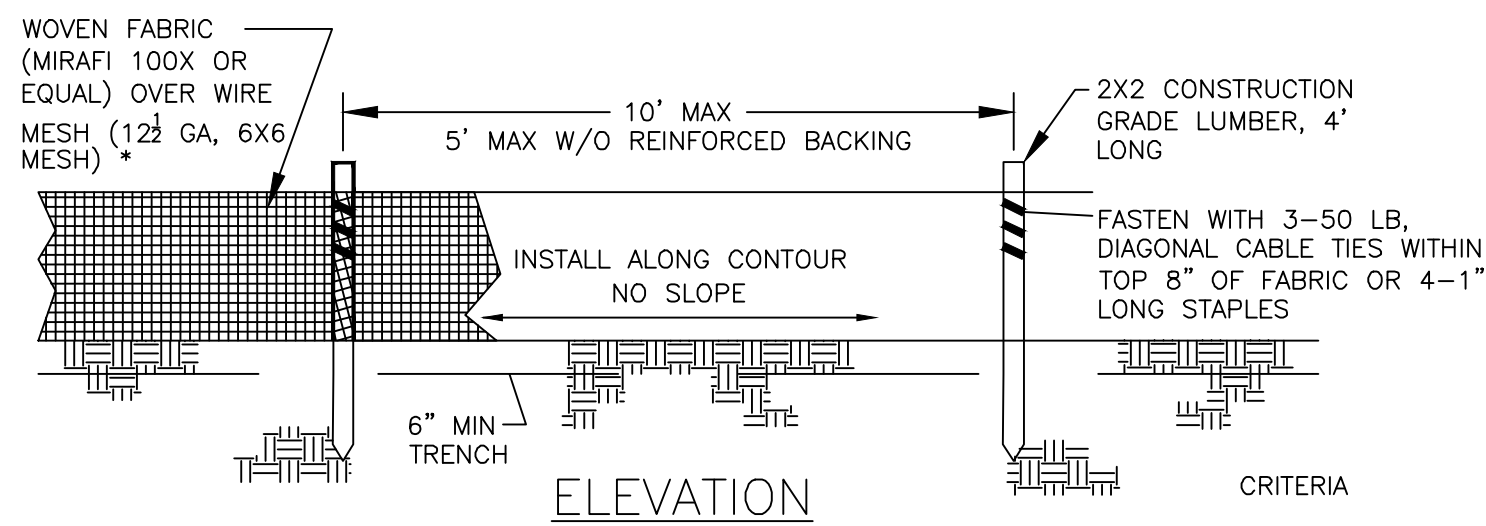


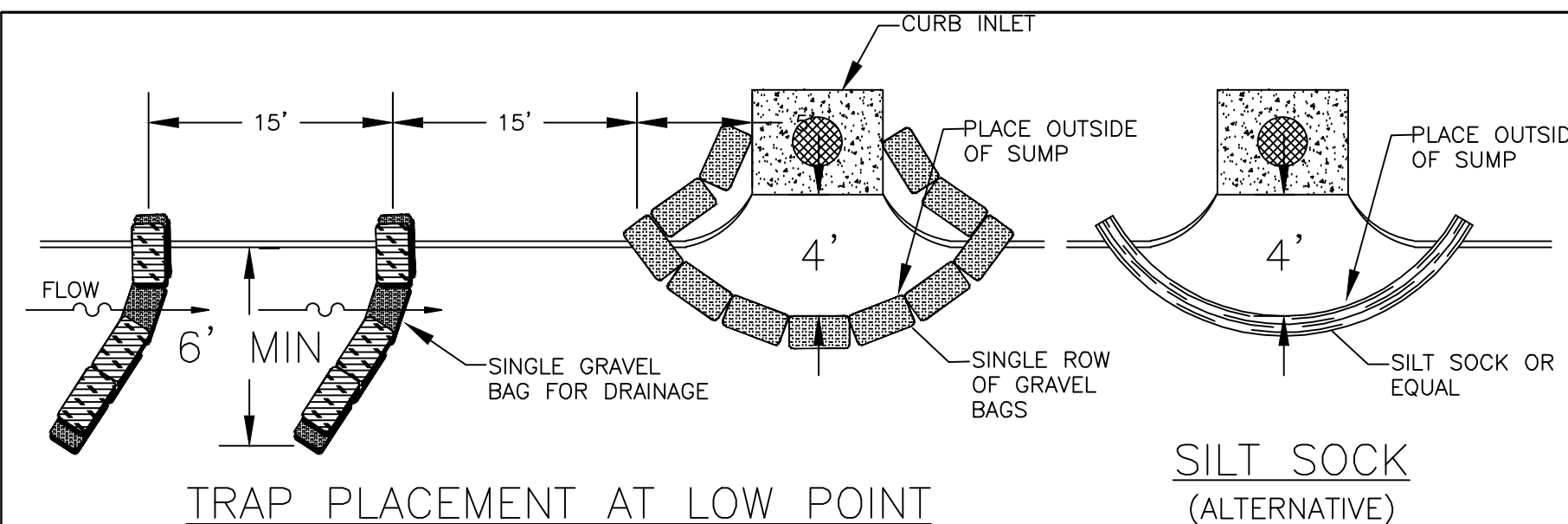
**CITY OF O'FALLON
ENGINEERING DEPARTMENT
O'FALLON, MISSOURI**

**SPACING CHART
FOR ESC DEVICES**



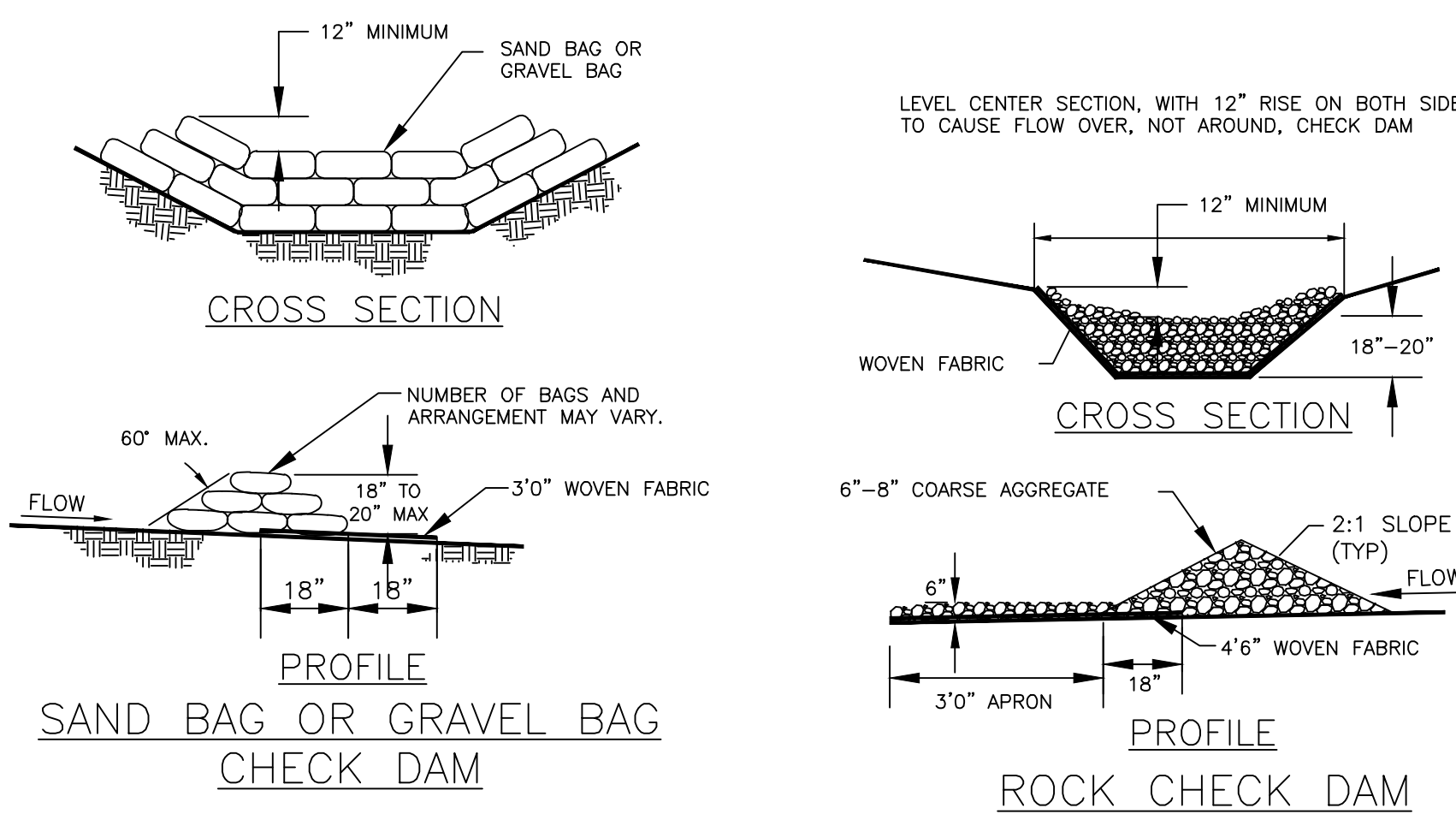
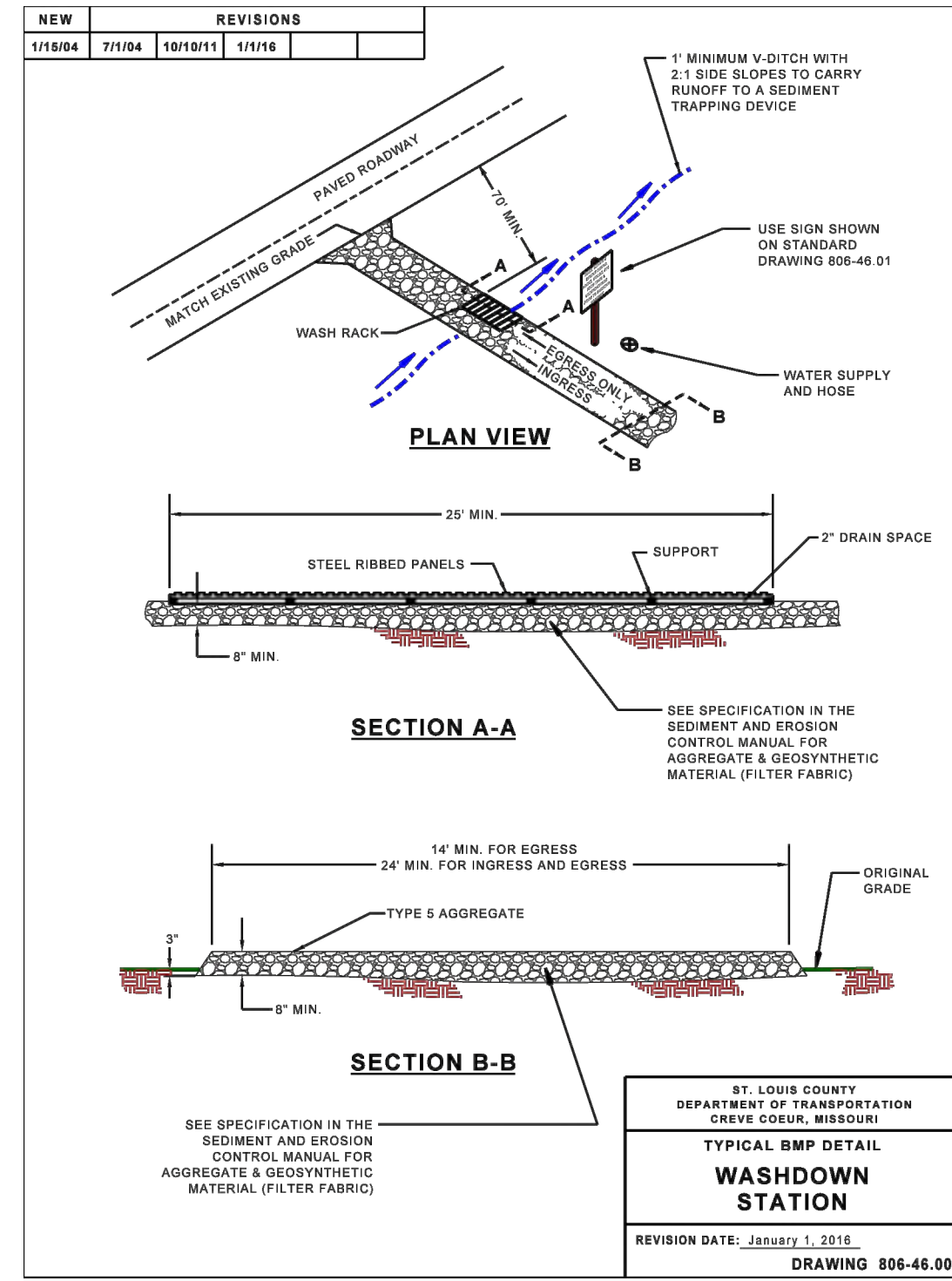
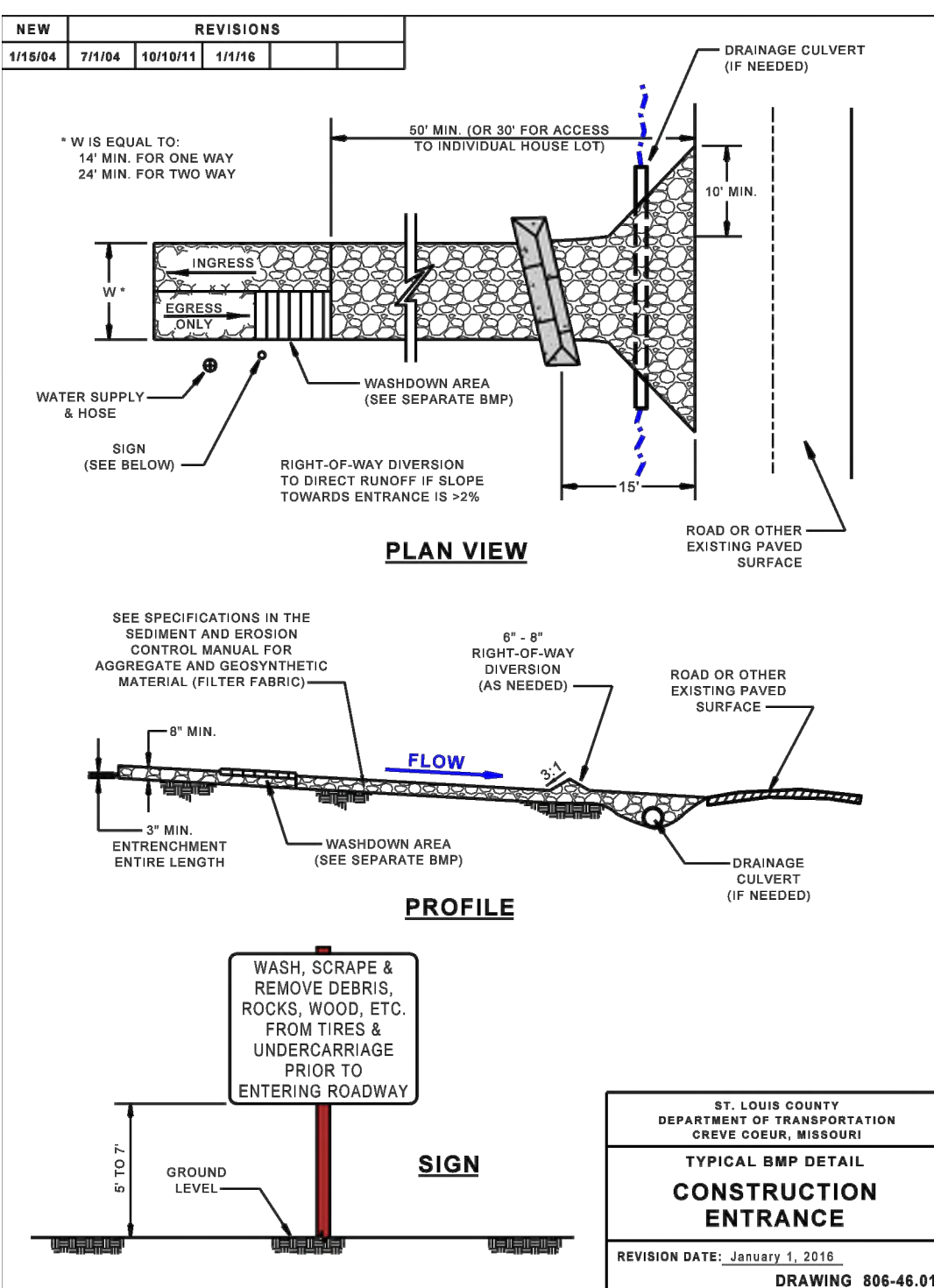
**CITY OF O'FALLON
ENGINEERING DEPARTMENT
O'FALLON, MISSOURI**

**SILT FENCE INSTALLATION
SHEET FLOW (ONLY)**



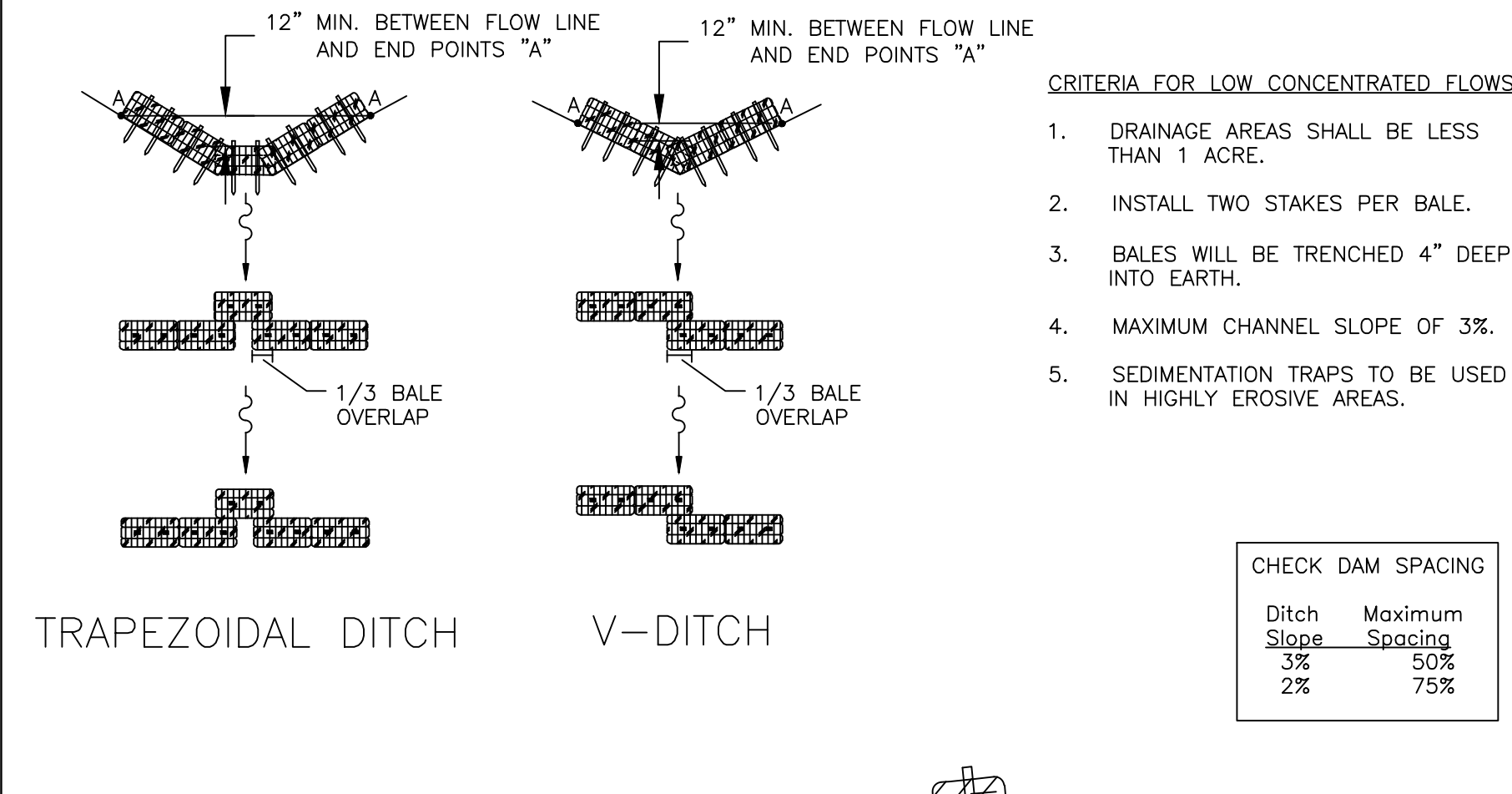
**CITY OF O'FALLON
ENGINEERING DEPARTMENT
O'FALLON, MISSOURI**

**CURB INLET
PROTECTION**



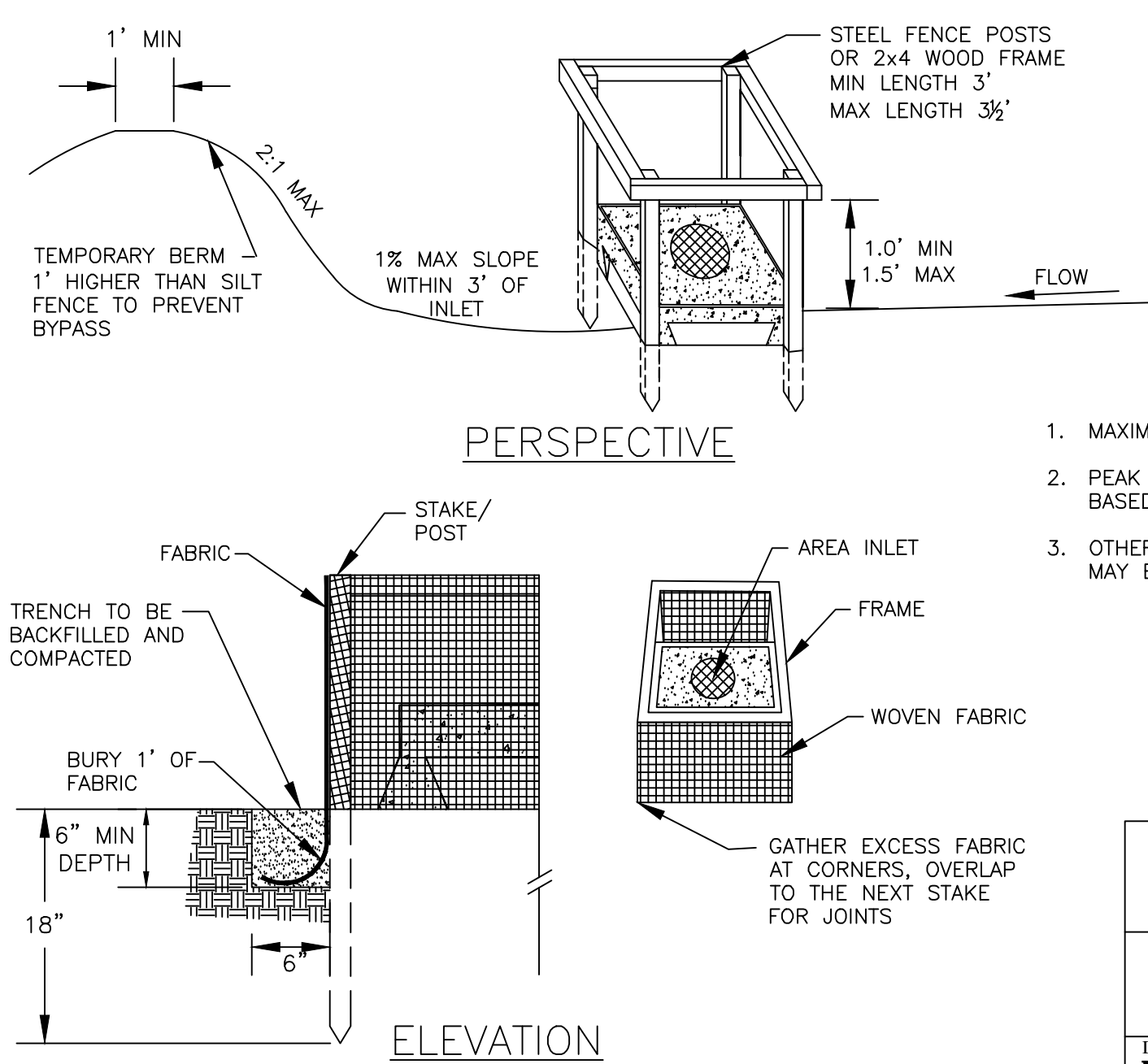
**CITY OF O'FALLON
ENGINEERING DEPARTMENT
O'FALLON, MISSOURI**

CHECK DAMS



**CITY OF O'FALLON
ENGINEERING DEPARTMENT
O'FALLON, MISSOURI**

**STRAW BALE
CHECK DAM**

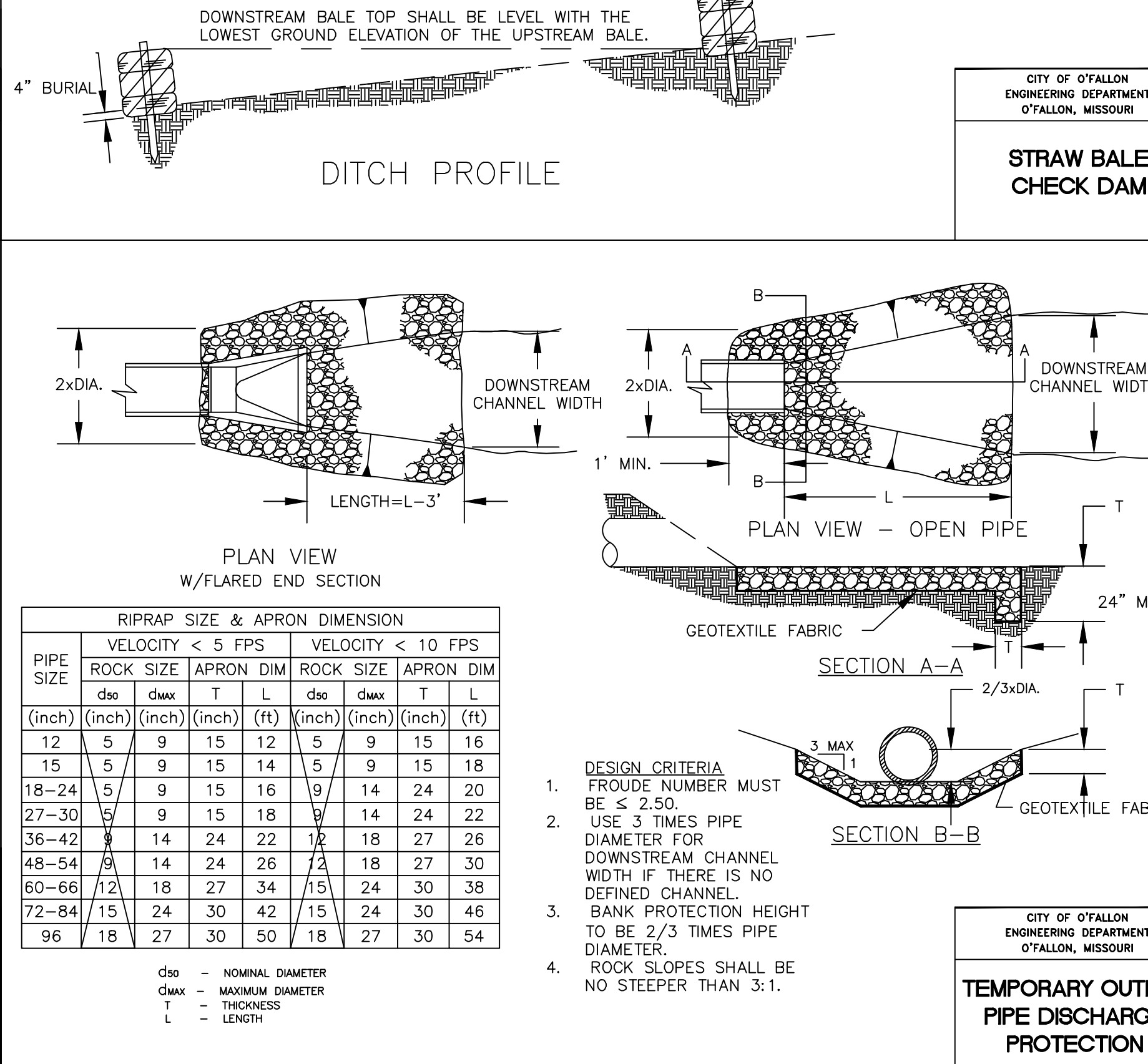


**St. Charles County
Erosion & Sediment Controls
Standard Drawings**

**AREA INLET
PROTECTION
FABRIC DROP**

DATE: MARCH 2008

DRAWING: ESC-14



**CITY OF O'FALLON
ENGINEERING DEPARTMENT
O'FALLON, MISSOURI**

**SOURCE ONE SOLUTIONS
CONSTRUCTION PLAN**

PART OF ADJUSTED LOT 6 OF A BOUNDARY ADJUSTMENT PLAT OF KEATON CORPORATE PARK PLAT THREE AND THE JAMES KNAUTH TRACT, ACCORDING TO THE PLAT THEREOF, RECORDED IN PLAT BOOK 45, PAGE 352, WITHIN U.S. SURVEY 1669, TOWNSHIP 46 NORTH, RANGE 3 EAST, CITY OF O'FALLON, ST. CHARLES COUNTY, MISSOURI

**Civil & Environmental
Consultants, Inc.**

3000 Little Hills Expressway, Suite 102
St. Charles, MO 63301
314-656-4566 • 866-250-3679
www.cecinco.com

JAMES R. PIPER, JR., PE
#PE-2012000797
PROFESSIONAL CIVIL ENGINEER
HAND SIGNATURE ON FILE

JRP DRAWN BY:
DKK CHECKED BY:
DKK APPROVED BY:
381-945 PROJECT NO:

Developer / Owner Information
SOURCE ONE SOLUTIONS
c/o KEYSTONE CONSTRUCTION CO.
633 Spirit Valley Central Drive
Chesterfield, MO 63005

EROSION CONTROL DETAILS

P+Z No. 23-00786
Approval Date 08/03/2023
Permit No.
Page No. C901