

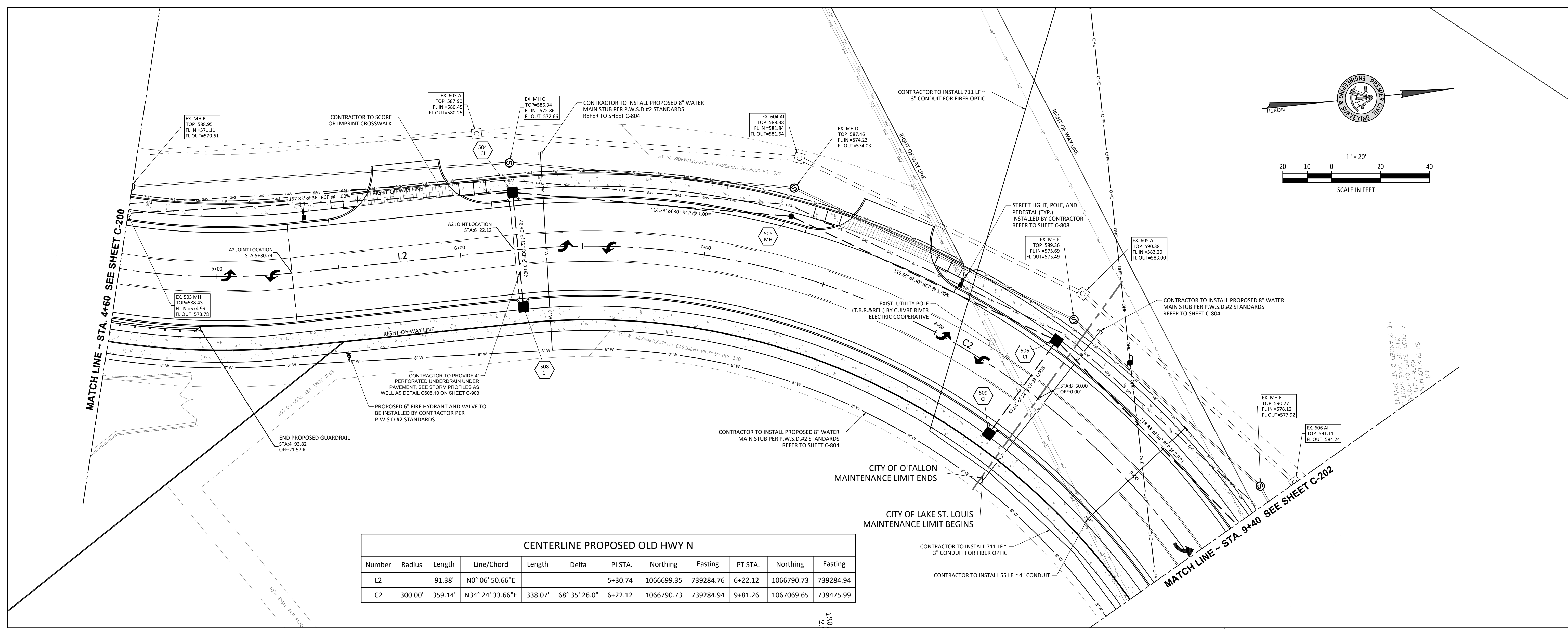
ENGINEERS AUTHENTICATION
 The responsibility for professional engineering actions on this project is hereby limited to the set of plans authorized by the seal, signature, and date hereunder attached. Responsibility is disclaimed for all other engineering plans involved in this project and specifically excludes revisions after the date stated hereunder.
STEVEN D. MARON, P.E.
 PROFESSIONAL ENGINEER
 PE 200607195

SOUTH RIDGE SHOPPES, L.L.C.
 OLD HIGHWAY N ROAD IMPROVEMENTS
 8298 HWY N
 OFALLON, MO
 NEIL KERSTEN
 16761 CONCORD HILL
 MARTHASVILLE, MO 63357

Project: **OLD HIGHWAY N ROAD IMPROVEMENTS**
 Date: **2-08-2020**

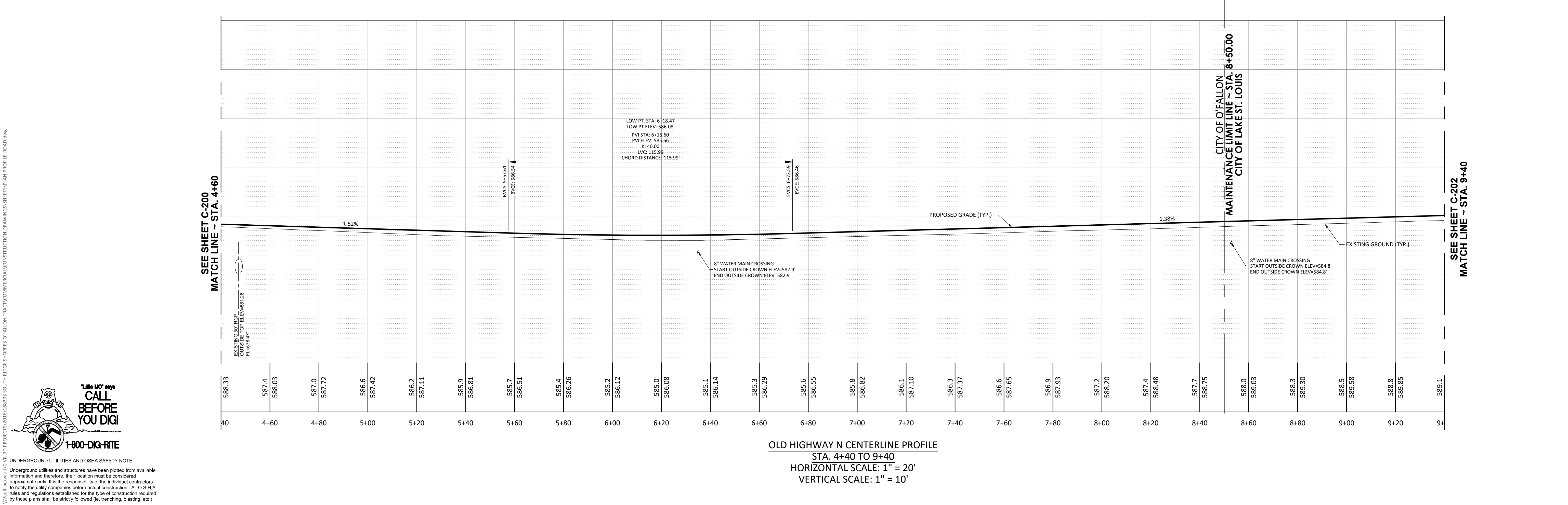
#	Revision Date	Description of Changes
1	03-20-20	REVISIONS PER CITY'S COMMENTS
2	04-08-20	REVISIONS PER CITY'S COMMENTS
3	04-24-20	REVISIONS PER CITY'S COMMENTS

Sheet Title: **C-201**
 Project No.: 168305
 Drawn By: A. JONES
 Checked By: J. WINTERS
 NOT RELEASED FOR CONSTRUCTION



CENTERLINE PROPOSED OLD HWY N

Number	Radius	Length	Line/Chord	Length	Delta	PI STA.	Northing	Easting	PT STA.	Northing	Easting
L2		91.38'	N0° 06' 50.66"E			5+30.74	1066699.35	739284.76	6+22.12	1066790.73	739284.94
C2	300.00'	359.14'	N34° 24' 33.66"E	338.07'	68° 35' 26.0"	6+22.12	1066790.73	739284.94	9+81.26	1067069.65	739475.99



1-800-DIG-RITE
 CALL BEFORE YOU DIG!
 UNDERGROUND UTILITIES AND OSHA SAFETY NOTE:
 Underground utilities and structures have been plotted from available information and therefore, their location must be considered approximate only. It is the responsibility of the individual contractors to notify the utility companies before actual construction. All O.S.H.A. rules and regulations established for the type of construction required by these plans shall be strictly followed (ie, trenching, blasting, etc.)

OLD HIGHWAY N CENTERLINE PROFILE
 STA. 4+40 TO 9+40
 HORIZONTAL SCALE: 1" = 20'
 VERTICAL SCALE: 1" = 10'