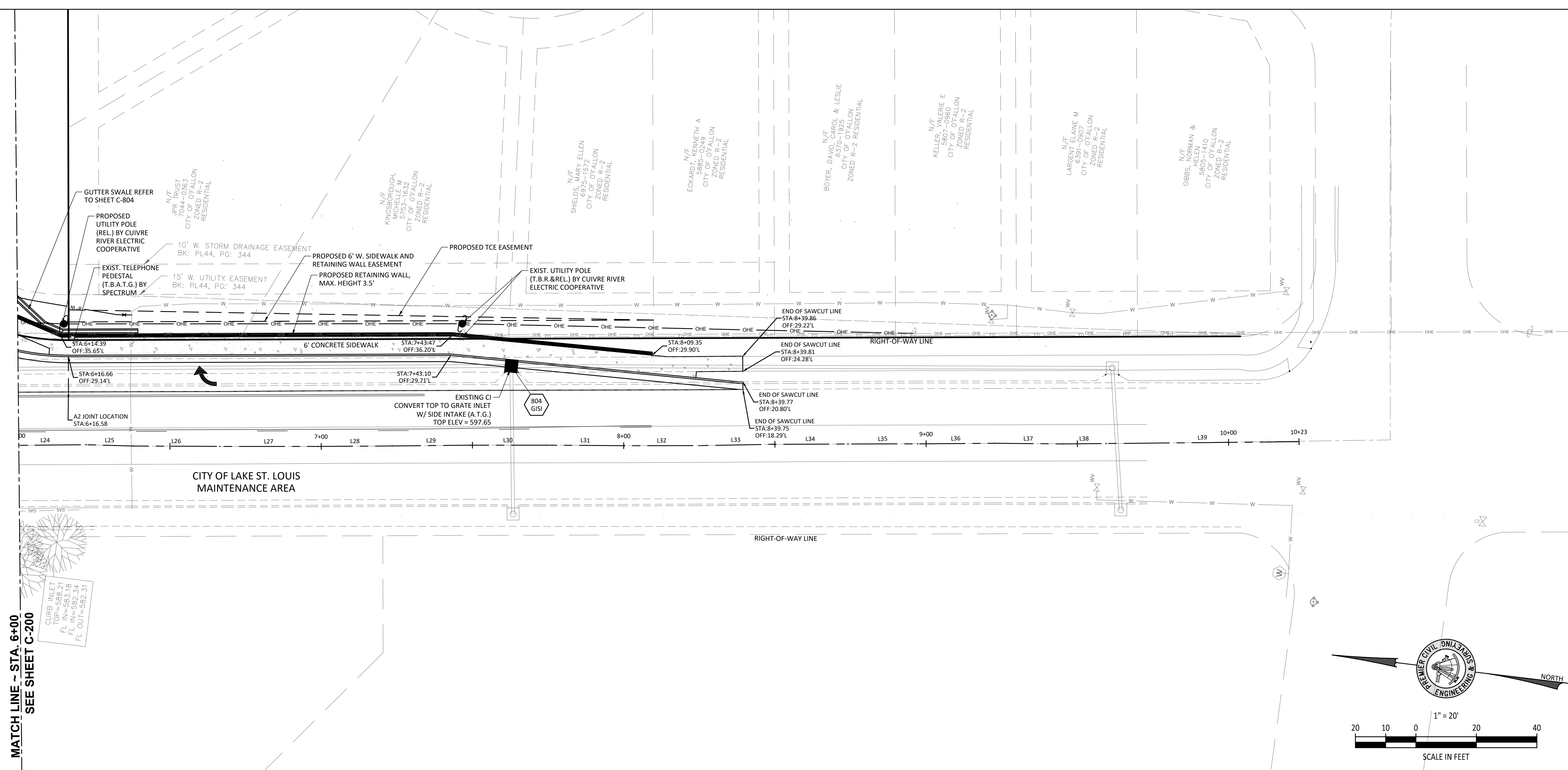
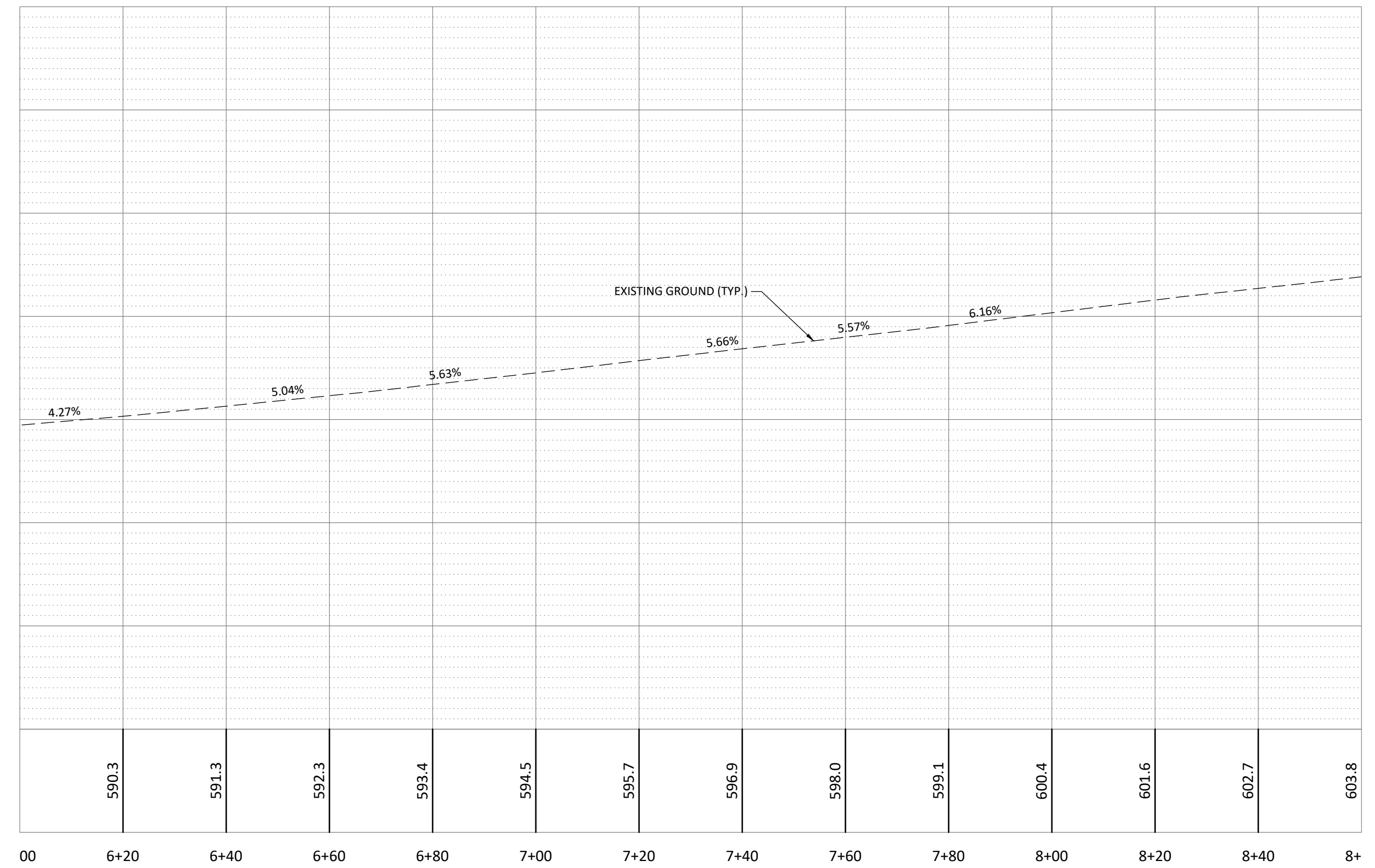


ENGINEERS AUTHENTICATION
The responsibility for the professional engineering actions on this project is hereby limited to the set of plans authorized by the seal, signature, and date hereunder attached. Responsibility is disclaimed for all other engineering plans involved in this project and specifically excludes revisions after the date shown hereunder.
STEVEN D. MARON, P.E.
PROFESSIONAL ENGINEER
PE 2006007195



MATCH LINE ~ STA. 6+00
SEE SHEET C-200

CURB INLET
TOP = 588.21
FL IN = 582.18
FL OUT = 582.31



SOMMERS ROAD CENTERLINE PROFILE
STA. 6+00 TO 8+60
HORIZONTAL SCALE: 1" = 20'
VERTICAL SCALE: 1" = 10'

SOMMERS ROAD											
Number	Radius	Length	Line/Chord	Length	Delta	PI STA.	Northing	Easting	PT STA.	Northing	Easting
L24		26.86'	S7° 22' 06.30"E			5+95.36	1066324.87	738923.73	6+22.22	1066298.23	738927.18
L25		15.55'	S5° 14' 43.64"E			6+22.22	1066298.23	738927.18	6+37.78	1066282.74	738928.60
L26		28.64'	S6° 36' 01.59"E			6+37.78	1066282.74	738928.60	6+66.42	1066254.29	738931.89
L27		32.48'	S6° 47' 12.95"E			6+66.42	1066254.29	738931.89	6+98.89	1066222.04	738935.73
L28		24.60'	S7° 14' 59.25"E			6+98.89	1066222.04	738935.73	7+23.50	1066197.63	738938.84
L29		25.71'	S7° 22' 29.68"E			7+23.50	1066197.63	738938.84	7+49.21	1066172.13	738942.14
L30		25.17'	S6° 52' 26.58"E			7+49.21	1066172.13	738942.14	7+74.38	1066147.14	738945.15
L31		25.86'	S6° 25' 55.88"E			7+74.38	1066147.14	738945.15	8+00.24	1066121.44	738948.04
L32		24.66'	S6° 53' 21.41"E			8+00.24	1066121.44	738948.04	8+24.90	1066096.96	738951.00
L33		24.49'	S7° 02' 16.95"E			8+24.90	1066096.96	738951.00	8+49.39	1066072.70	738954.36
L34		24.76'	S7° 02' 38.64"E			8+49.39	1066072.70	738954.36	8+74.15	1066048.13	738957.39
L35		23.05'	S6° 59' 57.24"E			8+74.15	1066048.13	738957.39	8+97.20	1066025.25	738960.20
L36		25.30'	S7° 14' 08.55"E			8+97.20	1066025.25	738960.20	9+22.50	1066000.16	738963.39
L37		22.59'	S6° 19' 01.01"E			9+22.50	1066000.16	738963.39	9+45.09	1065977.70	738965.87
L38		14.41'	S7° 17' 37.02"E			9+45.09	1065977.70	738965.87	9+59.50	1065963.41	738967.70
L39		63.80'	S7° 23' 26.48"E			9+59.50	1065963.41	738967.70	10+23.30	1065900.14	738975.91

SOUTH RIDGE SHOPPES, L.L.C.
OLD HIGHWAY N ROAD IMPROVEMENTS
8298 HWY N
OFALLON, MO
NEIL KERSTEN
16761 CONCORD HILL
MARTHASVILLE, MO 63357

Project No. 168305
Date 2-08-2020

Revision Date	Description of Changes
1. 04-08-20	REVISIONS PER CITY COMMENTS
2. 04-24-20	REVISIONS PER CITY COMMENTS
3. 05-12-20	REVISIONS PER CITY COMMENTS
4. 05-12-20	REVISIONS PER CITY COMMENTS

Sheet Title: CENTERLINE PLAN & PROFILE SOMMERS
Sheet Number: C-203
Project No.: 168305
Drawn By: A. JONES
Checked By: J. WINTERS

NOT RELEASED FOR CONSTRUCTION

\\wms\p\wms\civil3d\PROJECTS\1616\168305 SOUTH RIDGE SHOPPES OLD HIGHWAY N ROAD IMPROVEMENTS\DRAWINGS\PLAN\PROFILE\SOMMERS.dwg

1-800-DIG-RITE
CALL BEFORE YOU DIG!
UNDERGROUND UTILITIES AND OSHA SAFETY NOTE:
Underground utilities and structures have been plotted from available information and therefore, their location must be considered approximate only. It is the responsibility of the individual contractors to notify the utility companies before actual construction. All O.S.H.A. rules and regulations established for the type of construction required by these plans shall be strictly followed (i.e. trenching, shoring, etc.)