

ENGINEERS AUTHENTICATION  
The responsibility for professional engineering liability on this project is hereby limited to the set of plans authorized by the seal, signature, and date hereunder attached. Responsibility is disclaimed for all other engineering plans involved in this project and specifically excludes reviews after the date herein reauthorized.  
STEVEN D. MARION, P.E.  
PROFESSIONAL ENGINEER  
PE 200607195

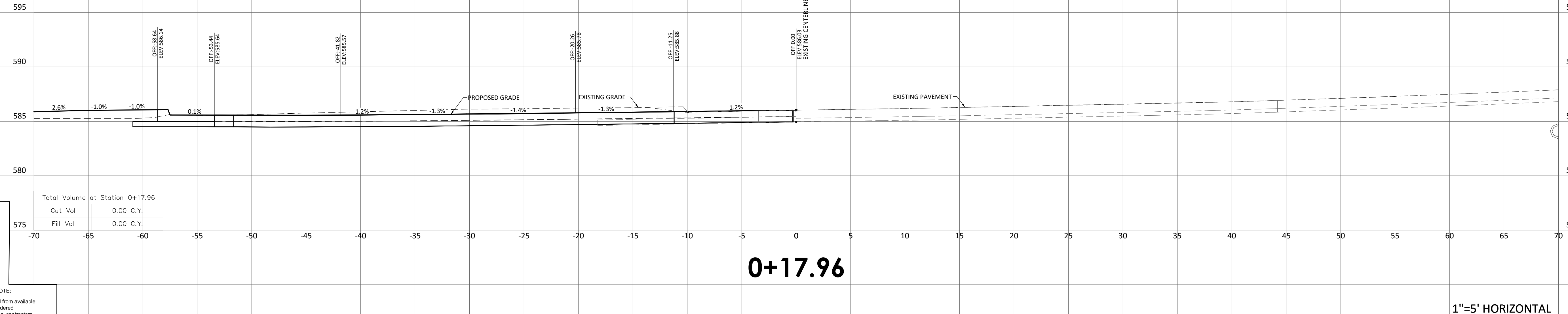
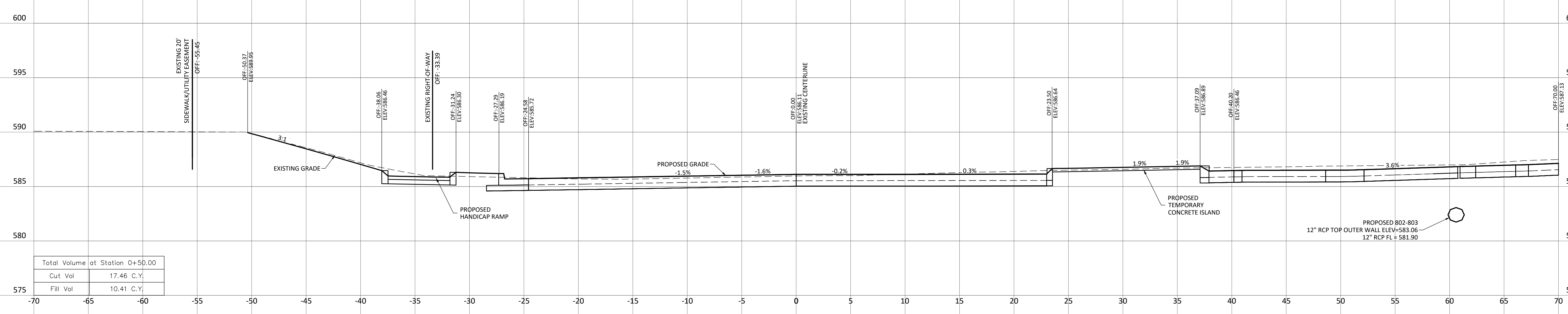
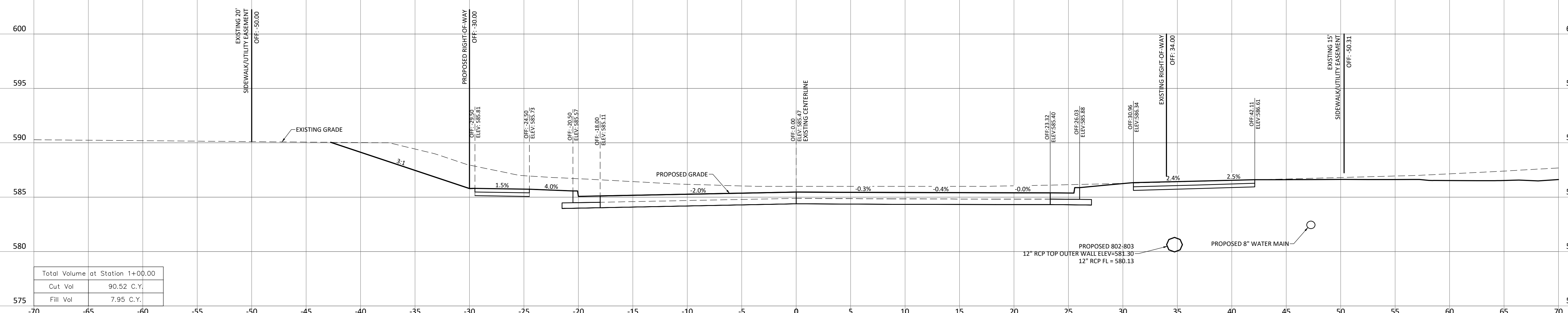
Project  
**SOUTH RIDGE SHOPPES, L.L.C.**  
**OLD HIGHWAY N ROAD IMPROVEMENTS**  
8288 HWY N  
OFALLON, MO  
NEIL KERSTEN  
16761 CONCORD HILL  
MARTHASVILLE, MO 63357

Date 2-08-2020

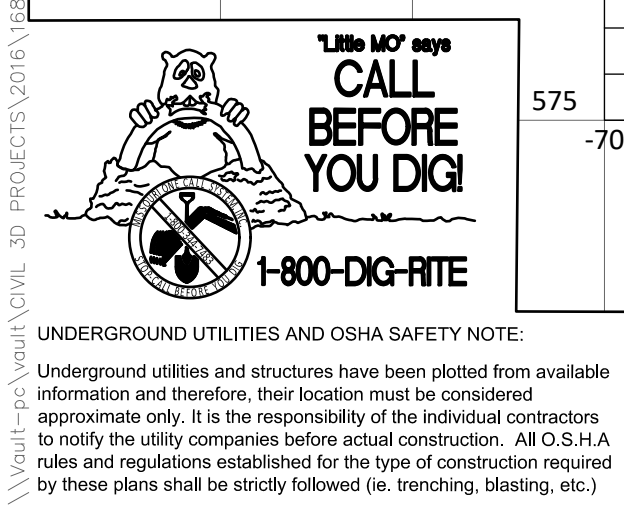
#	Revision Date	Description of Changes
1.	03-20-20	REVISIONS PER CITY COMMENTS
2.	04-24-20	REVISIONS PER CITY COMMENTS
3.	05-12-20	REVISIONS PER CITY COMMENTS
4.		

Sheet No. C-302  
Project No. 168305  
Drawn By A. JONES  
Checked By J. WINTERS  
NOT RELEASED FOR CONSTRUCTION

OLD HIGHWAY N CROSS SECTIONS



1"=5' HORIZONTAL  
1"=5' VERTICAL



**1-800-DIG-RITE**  
CALL BEFORE YOU DIG  
UNDERGROUND UTILITIES AND OSHA SAFETY NOTE:  
Underground utilities and structures have been plotted from available information and therefore, their location must be considered approximate only. It is the responsibility of the individual contractors to notify the utility companies before actual construction. All O.S.H.A. rules and regulations established for the type of construction required by these plans shall be strictly followed (ie. trenching, blasting, etc.)

\\va01-fpc\va01\vol\_30\PROJECTS\2016\168305-SOUTH RIDGE SHOPPES-OTFALLON-TRACTA\COMMERCIAL\CONSTRUCTION DRAWINGS\SHEETS\SECTIONS-ROAD.DWG