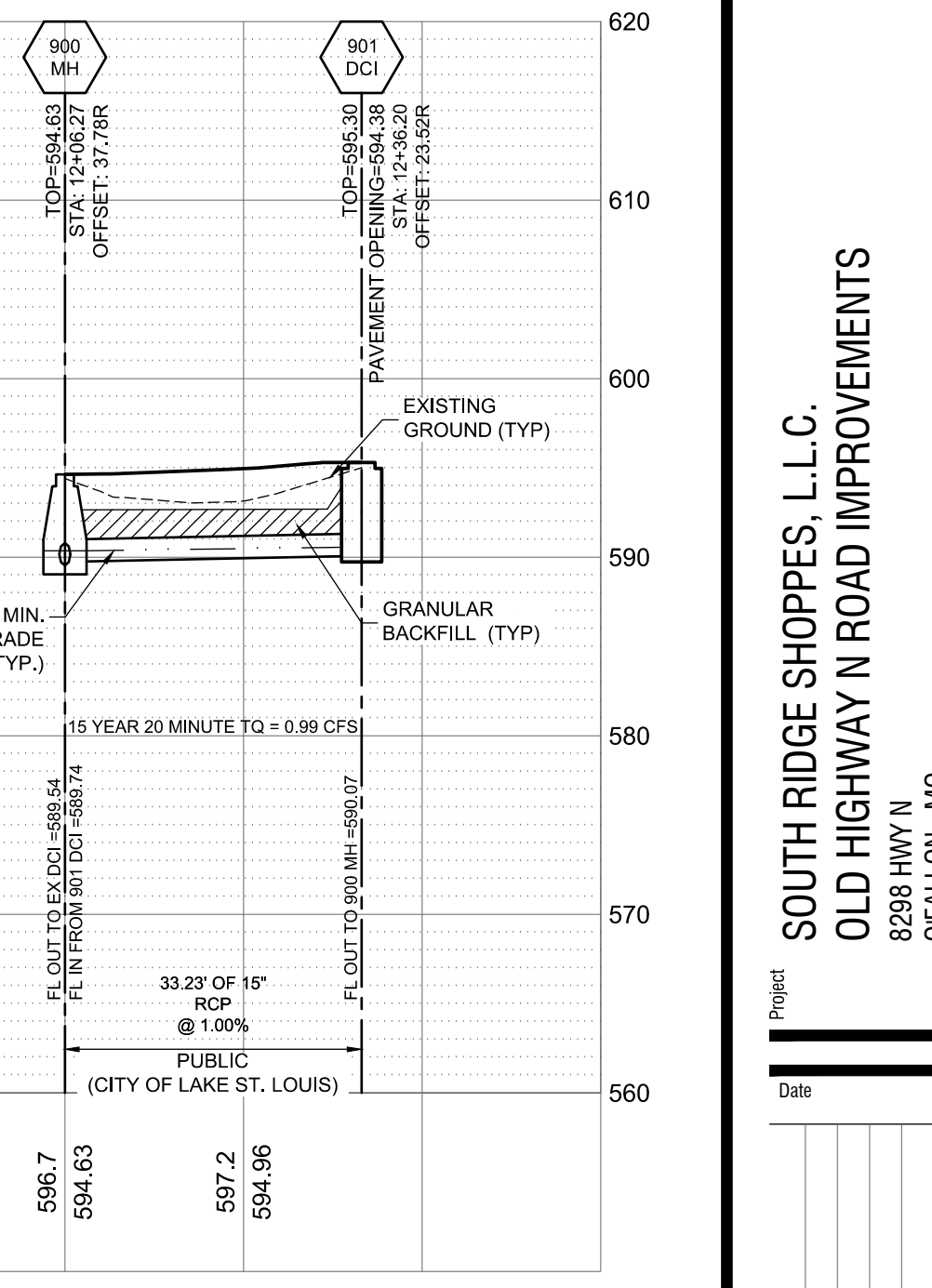
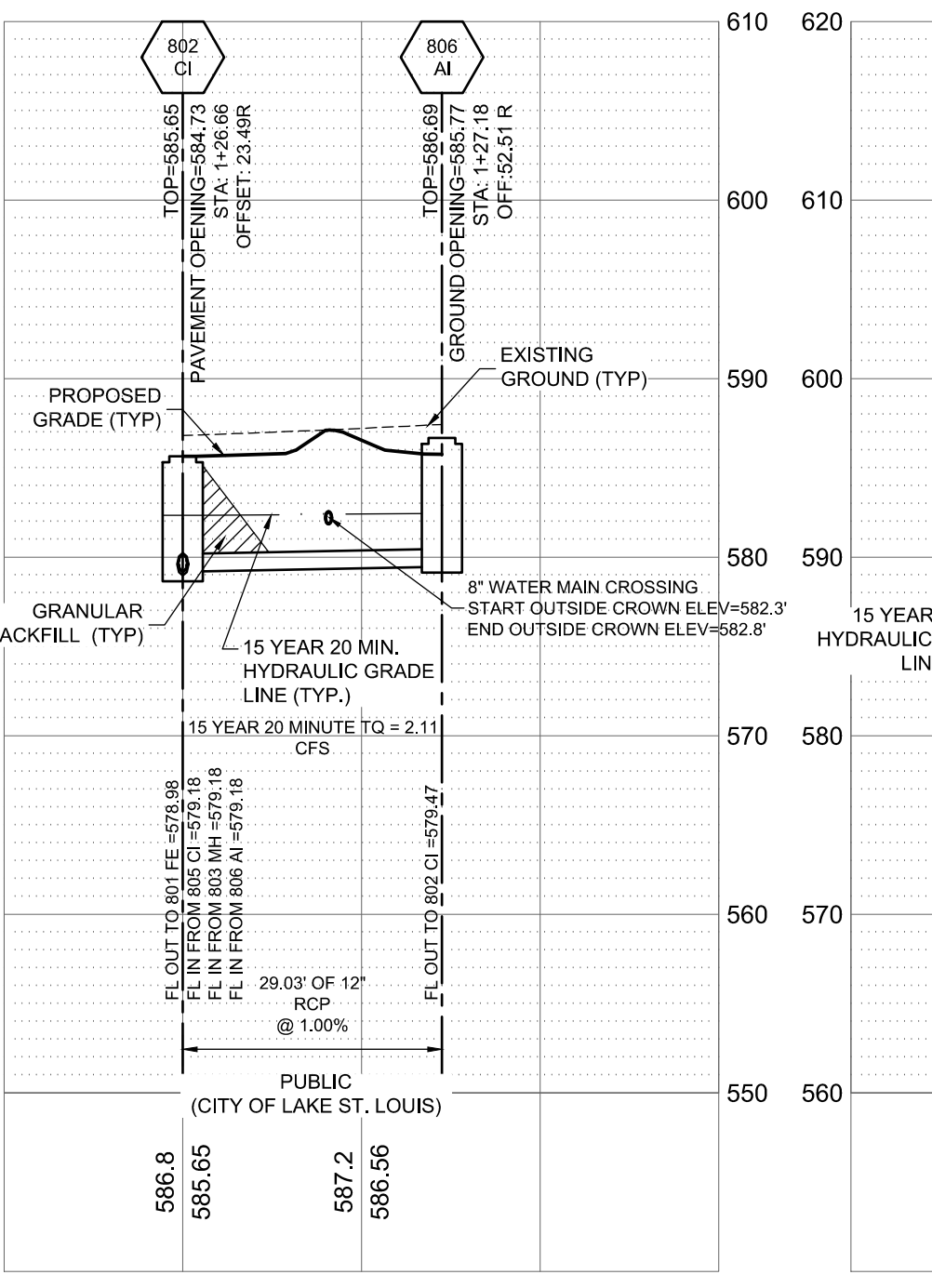
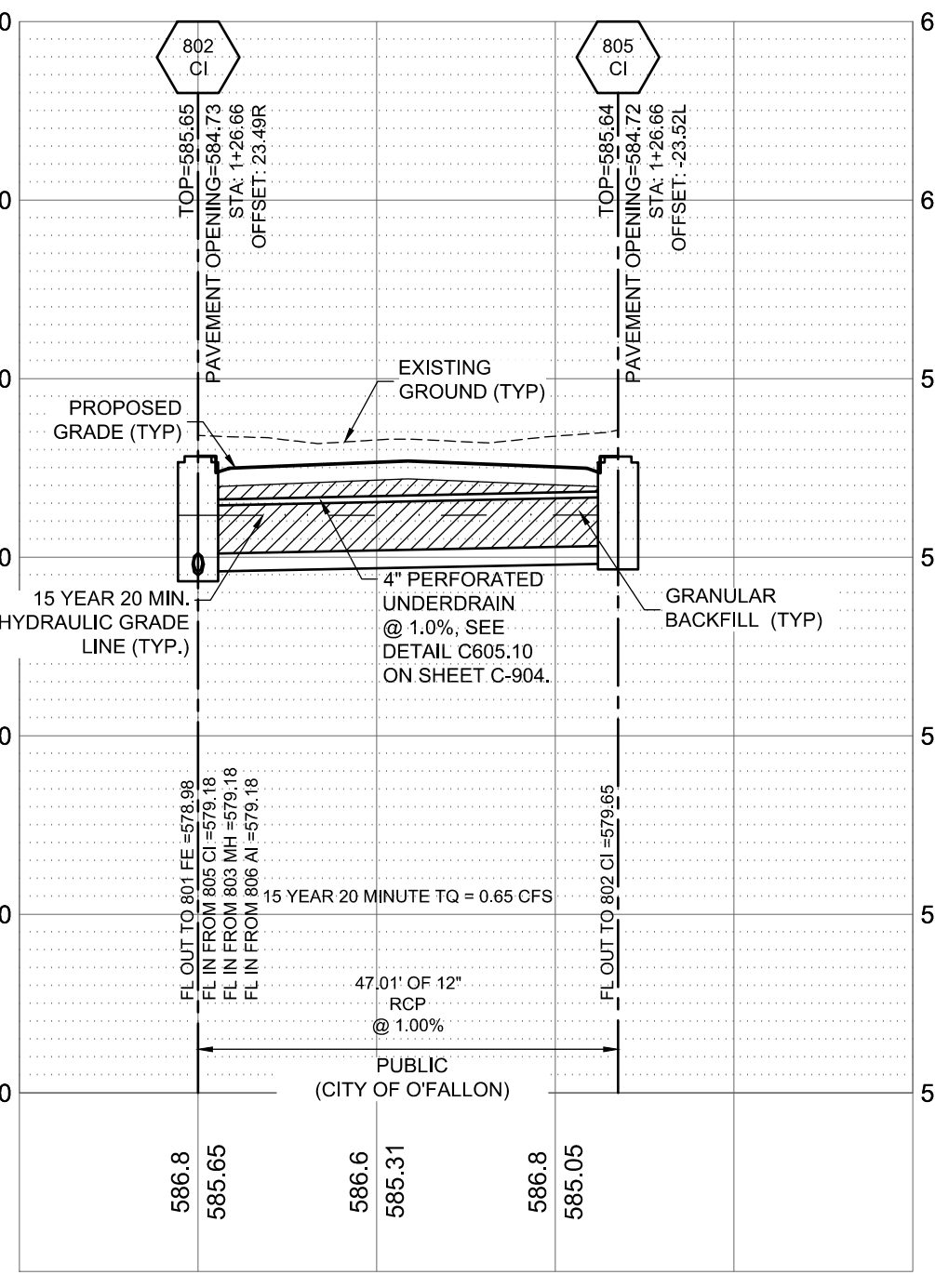
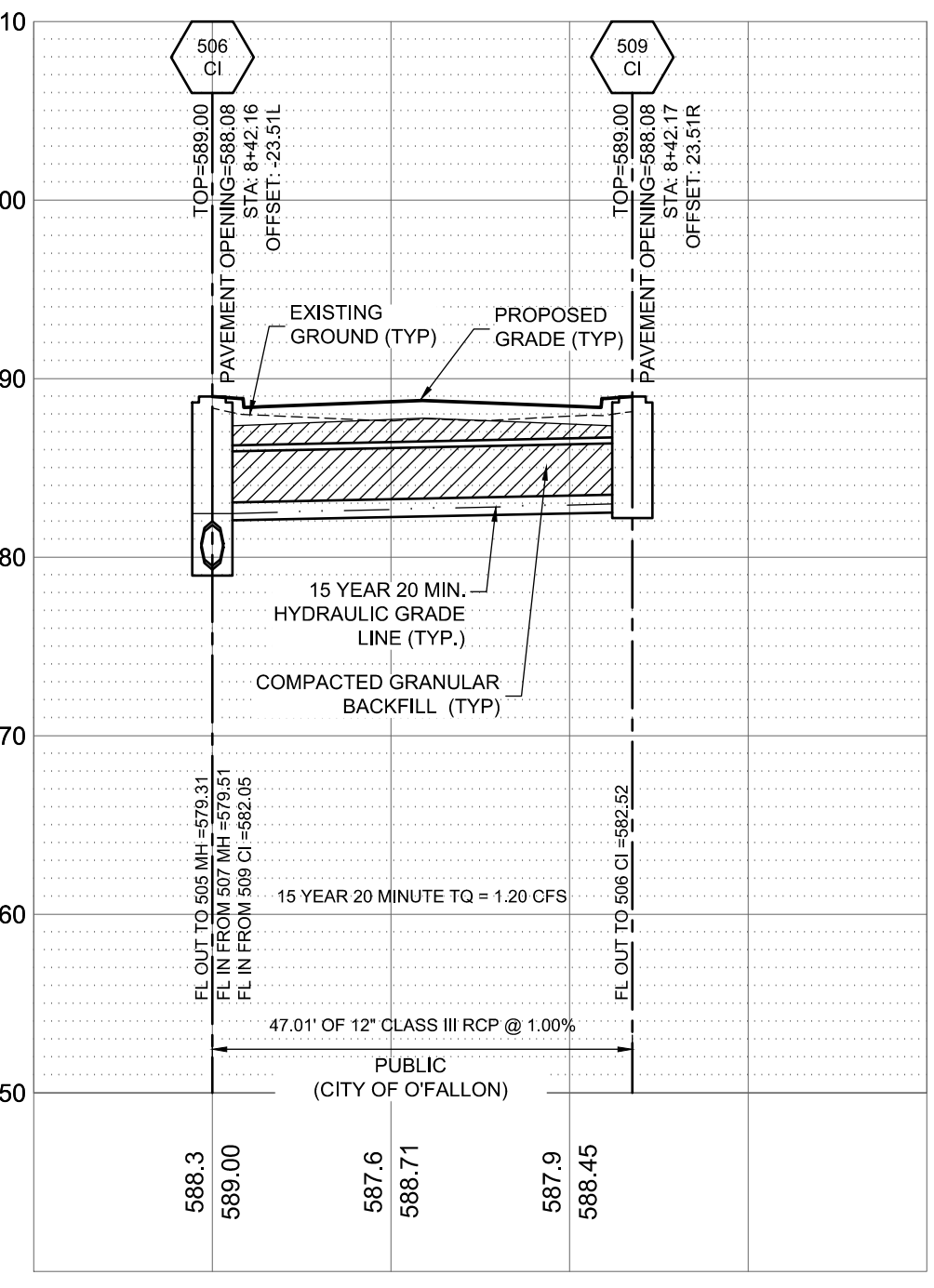
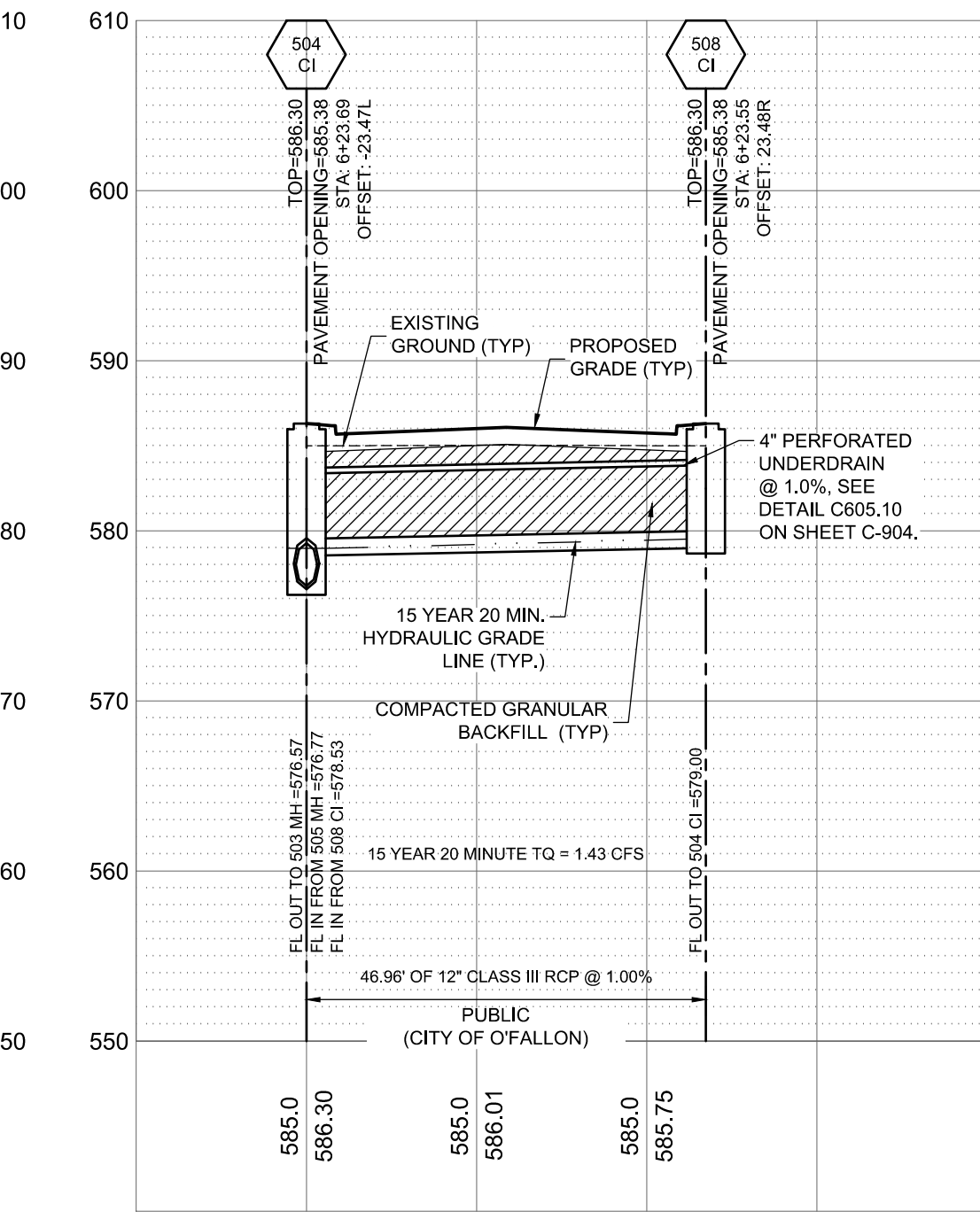
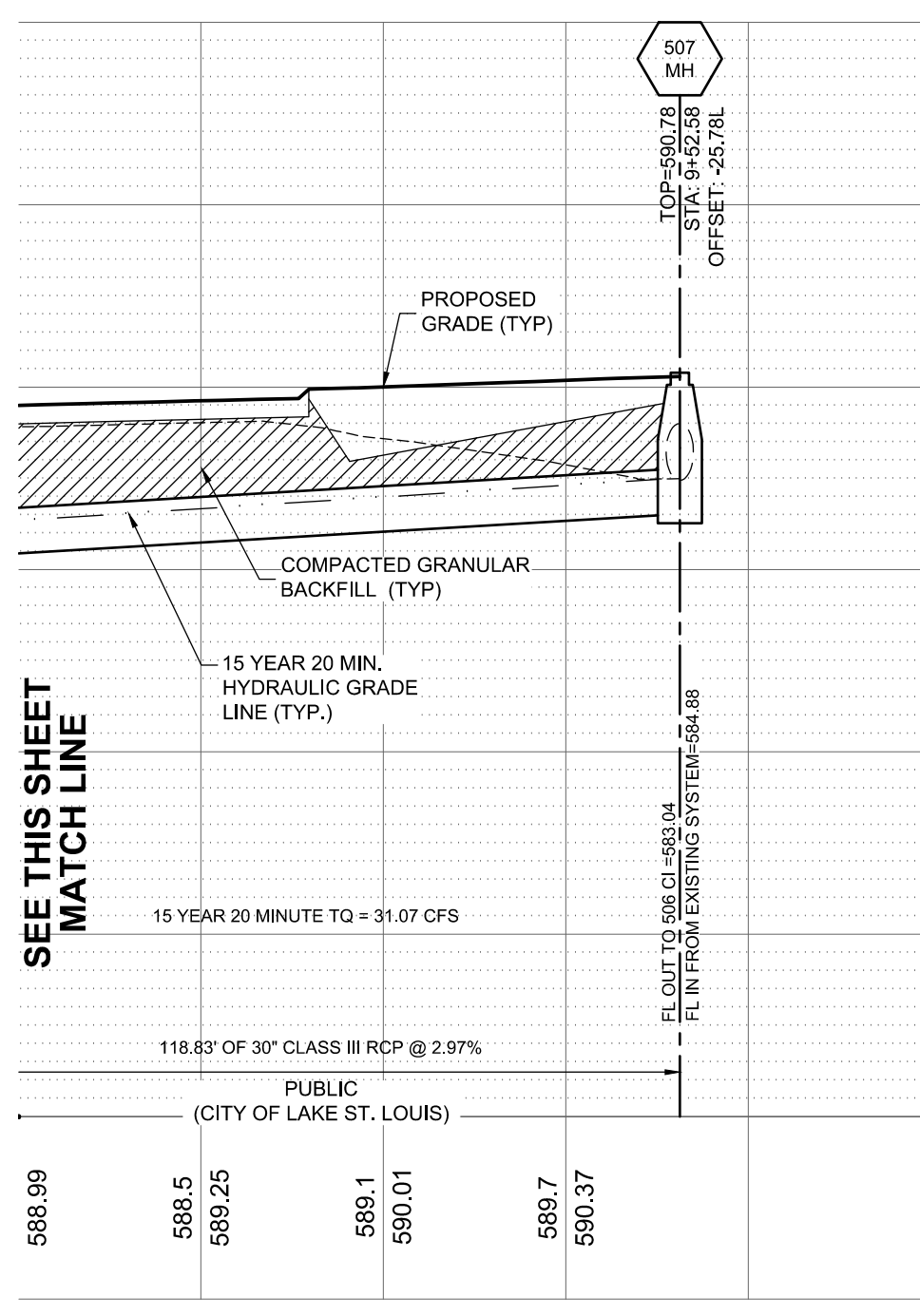


STORM SEWER PROFILE

1"=20' HORIZONTAL
1"=10' VERTICAL



STORM SEWER PROFILE

1"=20' HORIZONTAL
1"=10' VERTICAL



UNDERGROUND UTILITIES AND OSHA SAFETY NOTE:
Underground utilities and structures have been plotted from available information and therefore, their location must be considered approximate only. It is the responsibility of the individual contractors to notify the utility companies before actual construction. All O.S.H.A. rules and regulations established for the type of construction required by these plans shall be strictly followed (i.e. trenching, blasting, etc.)



ENGINEERS AUTHENTICATION
The responsibility for professional engineering liability on this project is hereby limited to the set of plans authorized by the seal, signature, and date hereunder attached. Responsibility is disclaimed for all other engineering plans involved in this project and specifically excludes measures after the date when authorized.
STEVEN D. WARDEN P.E.
PROFESSIONAL ENGINEER

Project: SOUTH RIDGE SHOPPES, L.L.C.
OLD HIGHWAY N ROAD IMPROVEMENTS
8238 HWY N
OFALLON, MO
NEIL KERSTEN
16761 CONCORD HILL
MARTHASVILLE, MO 63357

Date: 2-08-2020

#	Revision Date	Description of Changes
1	03-20-20	REVISIONS PER CITY COMMENTS
2	04-08-20	REVISIONS PER CITY COMMENTS
3	04-24-20	REVISIONS PER CITY COMMENTS
4	05-12-20	REVISIONS PER CITY COMMENTS

Sheet Title: STORM SEWER PROFILES
Sheet Number: C-600
Project No.: 168305
Drawn By: A. JONES
Checked By: J. WINTERS
NOT RELEASED FOR CONSTRUCTION