

ENGINEERS AUTHENTICATION  
 The responsibility for professional engineering liability on this project is hereby limited to the set of plans authorized by the seal, signature, and date hereon appearing. Responsibility is disclaimed for all other engineering plans involved in this project and specifically excludes reviews after the date of this authentication.  
 STEVEN D. MARSH, P.E.  
 PROFESSIONAL ENGINEER

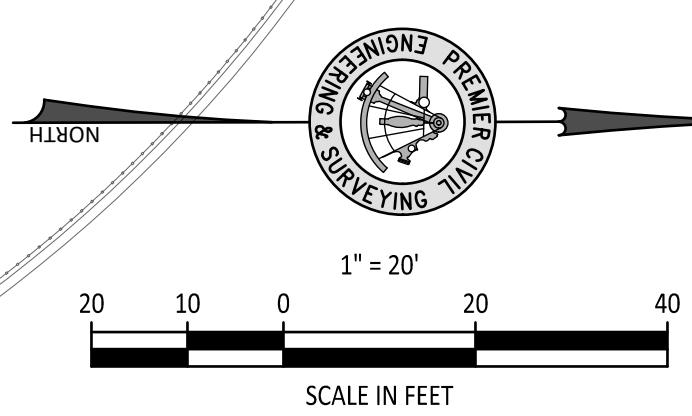
Project: SOUTH RIDGE SHOPPES, L.L.C.  
 OLD HIGHWAY N ROAD IMPROVEMENTS  
 8298 HWY N  
 OFALLON, MO  
 NEIL KERSTEN  
 16761 CONCORD HILL  
 MARTHASVILLE, MO 63357

Date: 2-08-2020

Revision Date	Description of Changes
1: 03-20-20	REVISIONS PER CITY'S COMMENTS
1: 04-08-20	REVISIONS PER CITY'S COMMENTS

Sheet Title: SIGNAGE & STRIPING PLAN  
 Sheet Number: SP-1  
 Project No.: 168305  
 Drawn By: A. JONES  
 Checked By: J. WINTERS  
 NOT RELEASED FOR CONSTRUCTION

1-800-DIG-RITE  
 CALL BEFORE YOU DIG!  
 UNDERGROUND UTILITIES AND OSHA SAFETY NOTE:  
 Underground utilities and structures have been plotted from available information and therefore, their location must be considered approximate only. It is the responsibility of the individual contractors to notify the utility companies before actual construction. All O.S.H.A. rules and regulations established for the type of construction required by these plans shall be strictly followed (i.e., trenching, shoring, etc.)



PAVEMENT MARKING LEGEND  
 SW = SOLID WHITE  
 SY = SOLID YELLOW  
 DSW = DOUBLE SOLID WHITE  
 DSY = DOUBLE SOLID YELLOW  
 IW = INTERMITTENT WHITE  
 IY = INTERMITTENT YELLOW  
 DW = DOTTED WHITE  
 T = TAPE  
 P = PAINT

130,286 SQ. FT.  
 2.99 ACRES

MATCH LINE - STA. 7+50  
 SEE THIS SHEET

MATCH LINE - STA. 4+25  
 SEE SHEET SP-2

MATCH LINE - STA. 7+50  
 SEE THIS SHEET