

ENGINEERS AUTHENTICATION
The responsibility for professional engineering liability on this project is hereby limited to the set of plans authorized by the seal, signature, and date hereon appearing. Responsibility is disclaimed for all other engineering plans involved in this project and specifically excludes measures other than those shown hereon.
STEVEN D. MARSHALL, P.E.
PROFESSIONAL ENGINEER

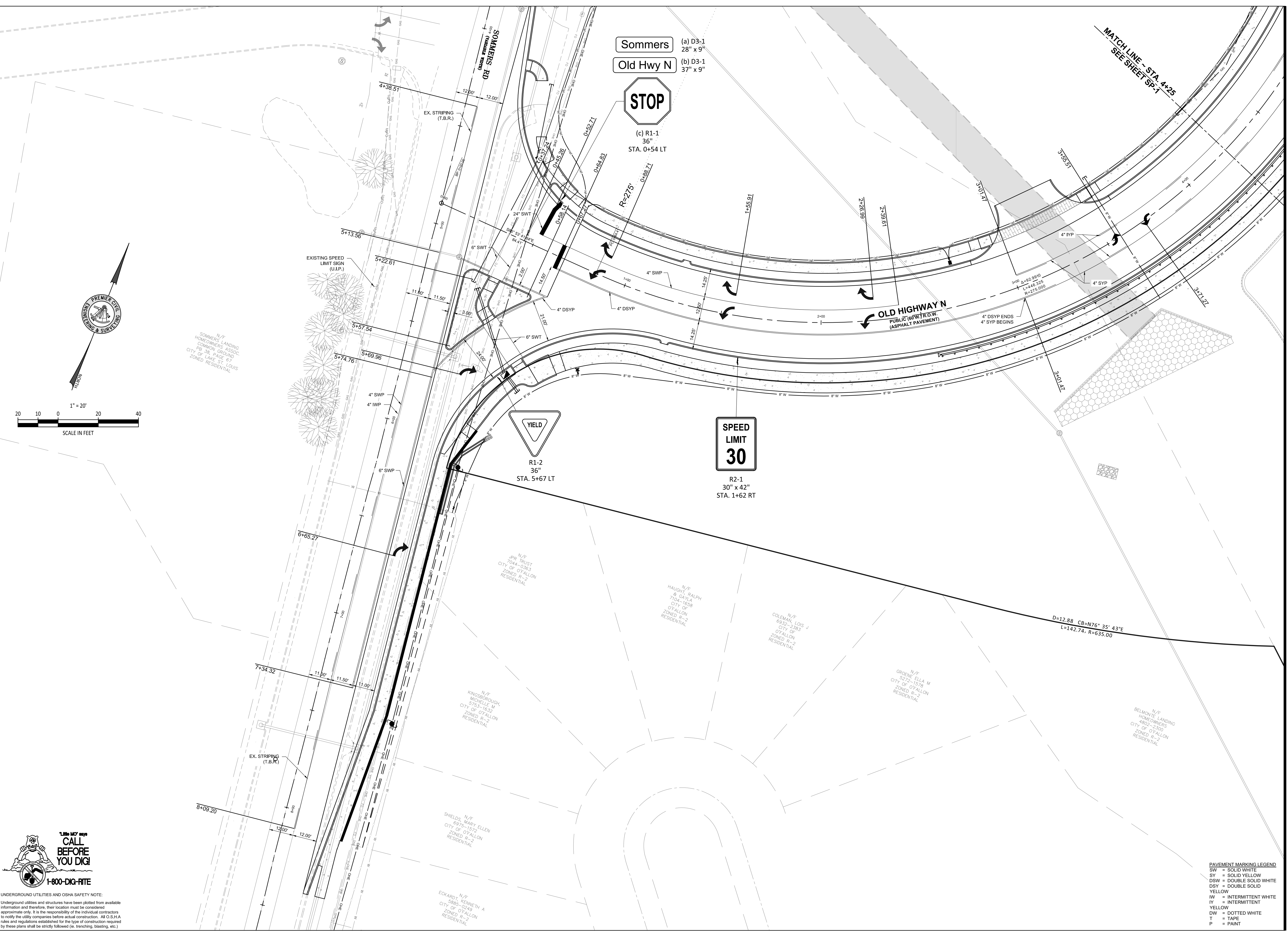
Project
SOUTH RIDGE SHOPPES, L.L.C.
OLD HIGHWAY N ROAD IMPROVEMENTS
8288 HWY N
OFALLON, MO
NEIL KERSTEN
16761 CONCORD HILL
MARTHASVILLE, MO 63357

Date 2-08-2020

Revision Date	Description of Changes
1. 03-20-20	REVISIONS PER CITY'S COMMENTS
2. 04-08-20	REVISIONS PER CITY'S COMMENTS
3. 04-14-20	REVISIONS PER CITY'S COMMENTS
5. 05-18-20	REVISIONS PER CITY'S COMMENTS

Sheet No. SP-2
Project No. 168305
Drawn By A. JONES
Checked By J. WINTERS
NOT RELEASED FOR CONSTRUCTION

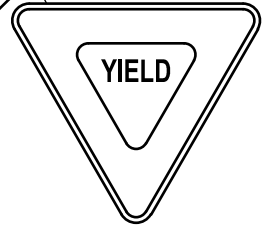
SIGNAGE AND STRIPING PLAN



Sommers (a) D3-1 28" x 9"
Old Hwy N (b) D3-1 37" x 9"



(c) R1-1 36" STA. 0+54 LT

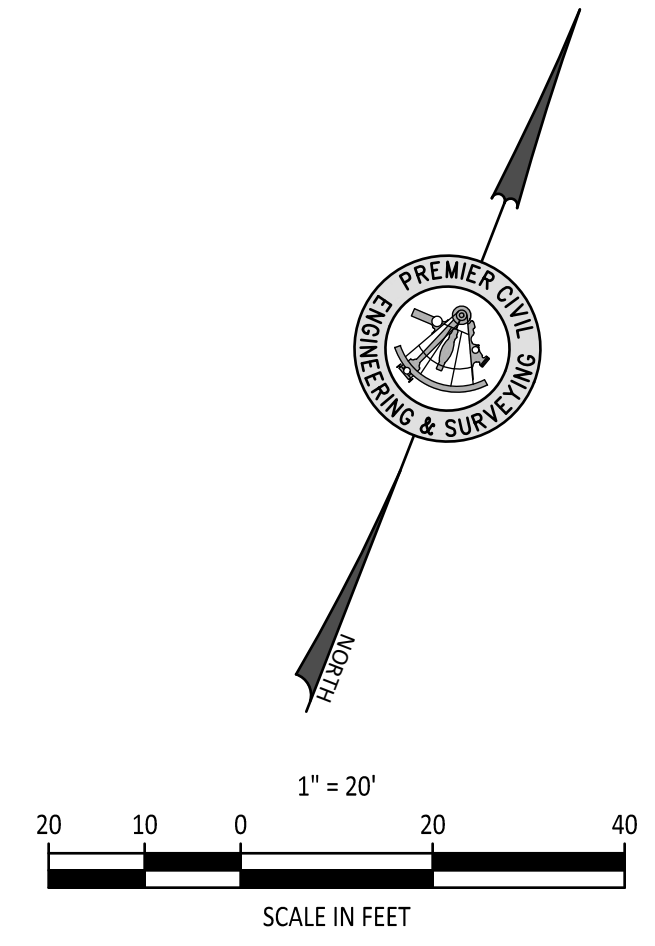


R1-2 36" STA. 5+67 LT



R2-1 30" x 42" STA. 1+62 RT

PAVEMENT MARKING LEGEND
SW = SOLID WHITE
SY = SOLID YELLOW
DSW = DOUBLE SOLID WHITE
DSY = DOUBLE SOLID YELLOW
IW = INTERMITTENT WHITE
IY = INTERMITTENT YELLOW
DW = DOTTED WHITE
T = TAPE
P = PAINT



1-800-DIG-RITE
CALL BEFORE YOU DIG!
UNDERGROUND UTILITIES AND OSHA SAFETY NOTE:
Underground utilities and structures have been plotted from available information and therefore, their location must be considered approximate only. It is the responsibility of the individual contractors to notify the utility companies before actual construction. All O.S.H.A. rules and regulations established for the type of construction required by these plans shall be strictly followed (i.e., trenching, shoring, etc.)