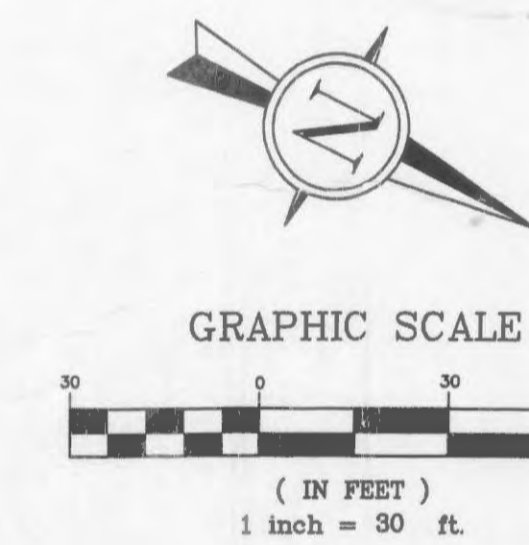


MATCH LINE "A", SEE SHEET C06

PROPOSED
KELLEN-BECK LAKE
NORMAL POOL=526.00
MAX. HW=530.98

DR. 2476 PG. 1717
N/C
ZONED HTCD
KELLEN-BECK PROPERTIES
FUTURE DEVELOPMENT

FOR CRUSHER ROAD
STORMS SENSORS TO BE CONSTRUCTED
SEE PERMANENT ROAD PLANS



ALL DIMENSIONS TO FACE
OF CURB UNLESS OTHERWISE
NOTED.

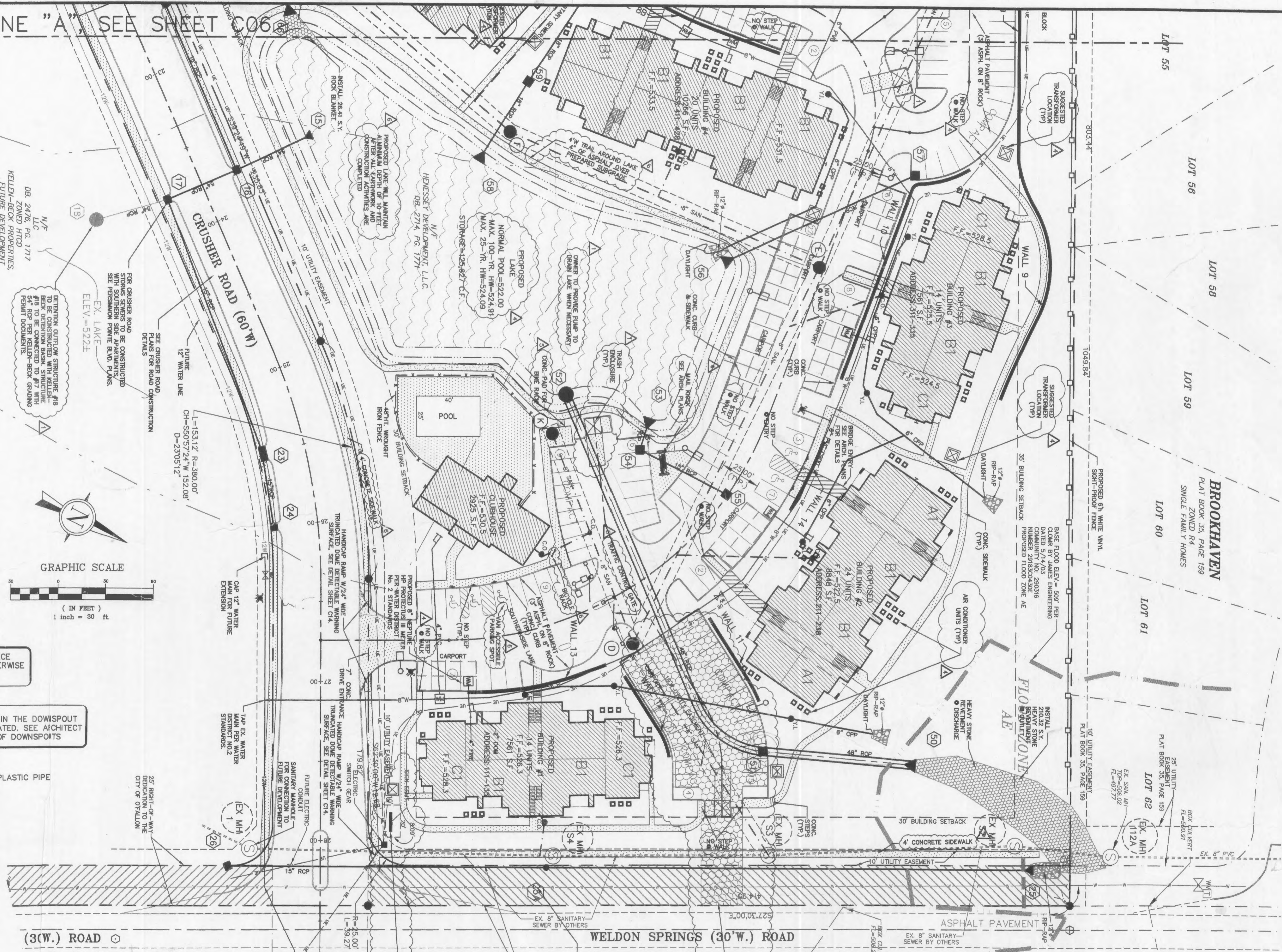
YARD INLETS TO BE COLLECTED IN THE DOWNSPOUT
SYSTEM, UNLESS OTHERWISE STATED. SEE ARCHITECT
PLANS FOR LOCATION OF DOWNSPOUTS

C.P.P. = CORRUGATED PLASTIC PIPE

PREPARED FOR:
HENNESSEY DEVELOPMENT
9904 CLAYTON RD.
SUITE 122
ST. LOUIS, MO. 63124
PH. (314) 991-1248
FAX (314) 991-0964

N/F
MALLARDS LANDING
APARTMENTS
DB. 2472, PG. 0001
ZONED R4
APARTMENTS

CITY OF O'FALLON FILE NO. 3101.01



- ▲ 09/26/04 PER CITY OF O'FALLON COMMENTS
- ▲ 07/20/03 PER CITY OF O'FALLON COMMENTS
- ▲ 06/10/03 PER CITY OF O'FALLON COMMENTS
- ▲ 10/23/02 CITY OF O'FALLON COMMENTS
- ▲ 8/27/02 DUCKETT CREEK COMMENTS
- ▲ 8/12/02 CITY OF O'FALLON COMMENTS

SOUTHERNSIDE APARTMENTS
SITE PLAN
JAMES ENGINEERING & SURVEYING CO., INC.
ENGINEERS PLANNERS SURVEYORS
10811 BIG BEND BLVD. KIRKWOOD, MO 63122
PHONE: (314) 822-1006 FAX: (314) 822-0006
PROJECT # 184025

