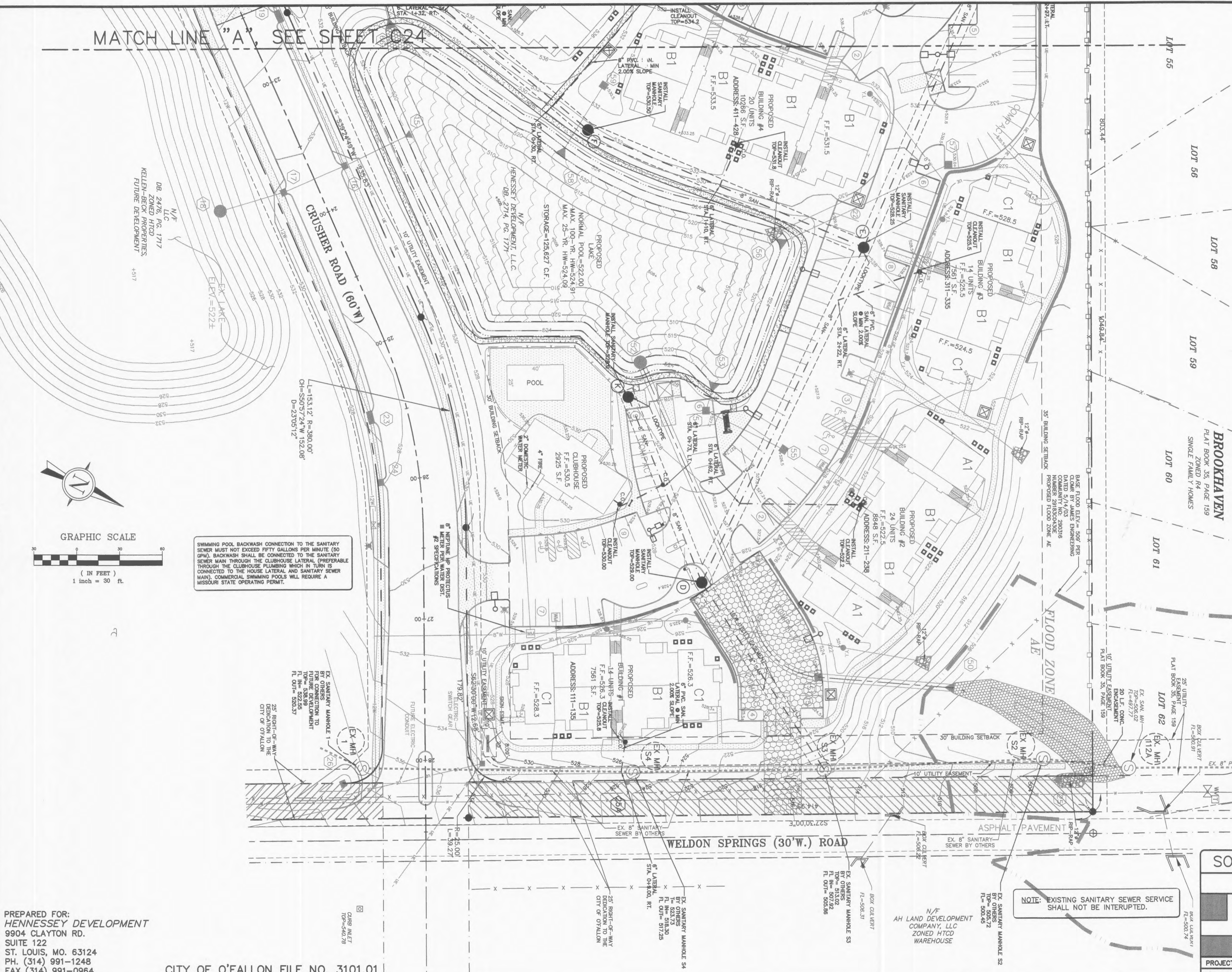
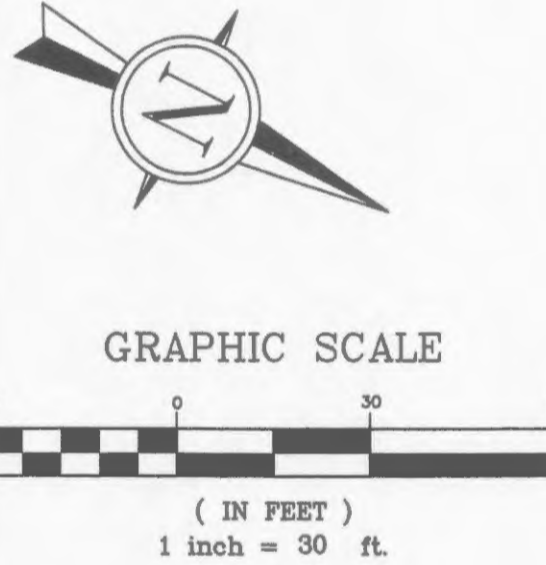


MATCH LINE "A", SEE SHEET C24



SWIMMING POOL BACKWASH CONNECTION TO THE SANITARY SEWER MUST NOT EXCEED FIFTY GALLONS PER MINUTE (50 GPM). BACKWASH SHALL BE CONNECTED TO THE SANITARY SEWER MAIN THROUGH THE CLUBHOUSE LATERAL (PREFERABLE THROUGH THE CLUBHOUSE PLUMBING WHICH IN TURN IS CONNECTED TO THE HOUSE LATERAL AND SANITARY SEWER MAIN). COMMERCIAL SWIMMING POOLS WILL REQUIRE A MISSOURI STATE OPERATING PERMIT.



SEE PROFILES FOR TAILSTAKE ELEVATIONS

- ▲ 9/26/04 CITY OF O'FALLON CMNTS
- ▲ 10/23/02 CITY OF O'FALLON CMNTS
- ▲ 8/27/02 DUCKETT CREEK CMNTS
- ▲ 8/12/02 CITY OF O'FALLON CMNTS

**SOUTHERNSIDE APARTMENTS**  
**SANITARY SEWER PLAN**  
**JAMES ENGINEERING & SURVEYING CO., INC.**  
 ENGINEERS PLANNERS SURVEYORS  
 10811 BIG BEND BLVD. KIRKWOOD, MO 63122  
 PHONE: (314) 822-1006 FAX: (314) 822-0006

PREPARED FOR:  
**HENNESSEY DEVELOPMENT**  
 9904 CLAYTON RD.  
 SUITE 122  
 ST. LOUIS, MO. 63124  
 PH. (314) 991-1248  
 FAX (314) 991-0964

CITY OF O'FALLON FILE NO. 3101.01

NOTE: EXISTING SANITARY SEWER SERVICE SHALL NOT BE INTERRUPTED.