

Date issued:

6-10-99

Revisions:  
11-18-99 CITY COMMENTS  
2-22-00 SANITARY

Consultants:  
Wedemeyer Cernik Corrubia, Inc. Architects  
707 N. Second St., Ste 300  
St. Louis, Mo. 63102  
Heideman & Associates, Inc. Engineers  
13545 Barrett Pkwy. Dr., Ste 200  
St. Louis, Mo. 63201  
Box Engineering Co., Inc.  
1055 E. Oliveleaf Drive  
St. Peters, Mo. 63376-6445

MWH PROJECT NO.  
99019.048

MWH ALLIANCE  
A Joint Venture LLC  
Wedemeyer Cernik Corrubia, Inc. Architects  
707 N. Second Street St. Louis, MO  
Heideman + Associates, Inc.  
13545 Barrett Parkway Drive, St. Louis, MO

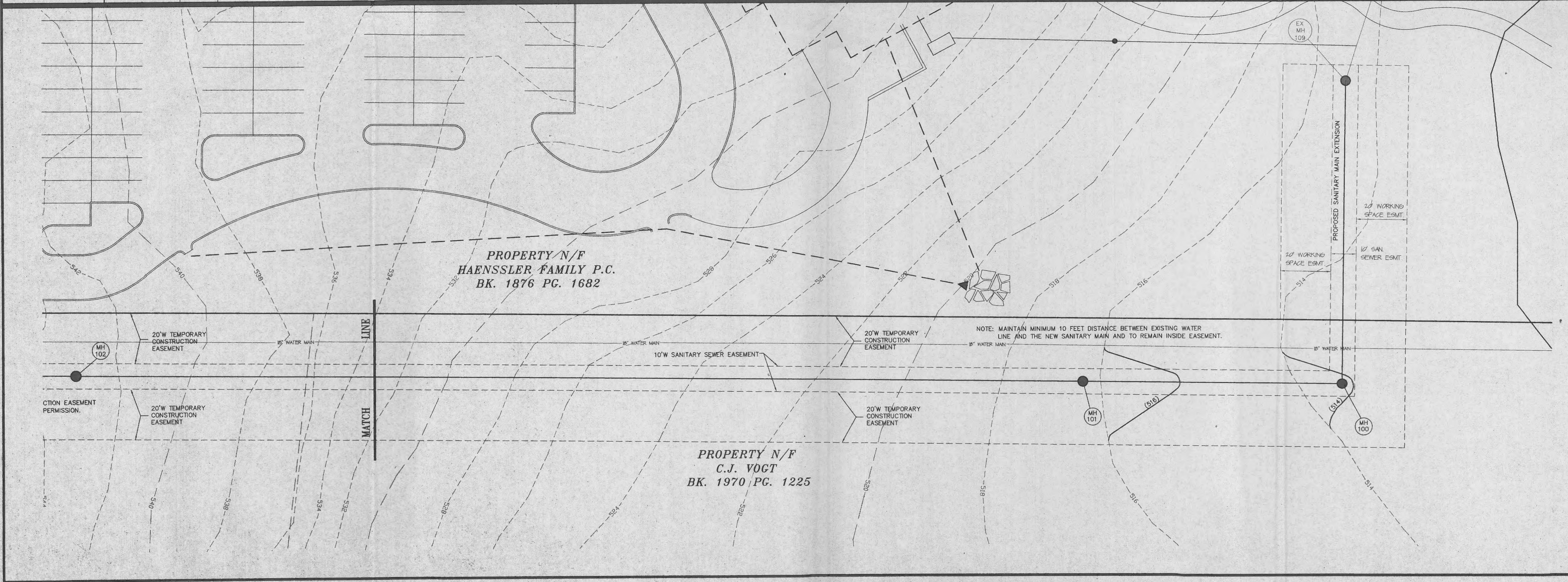
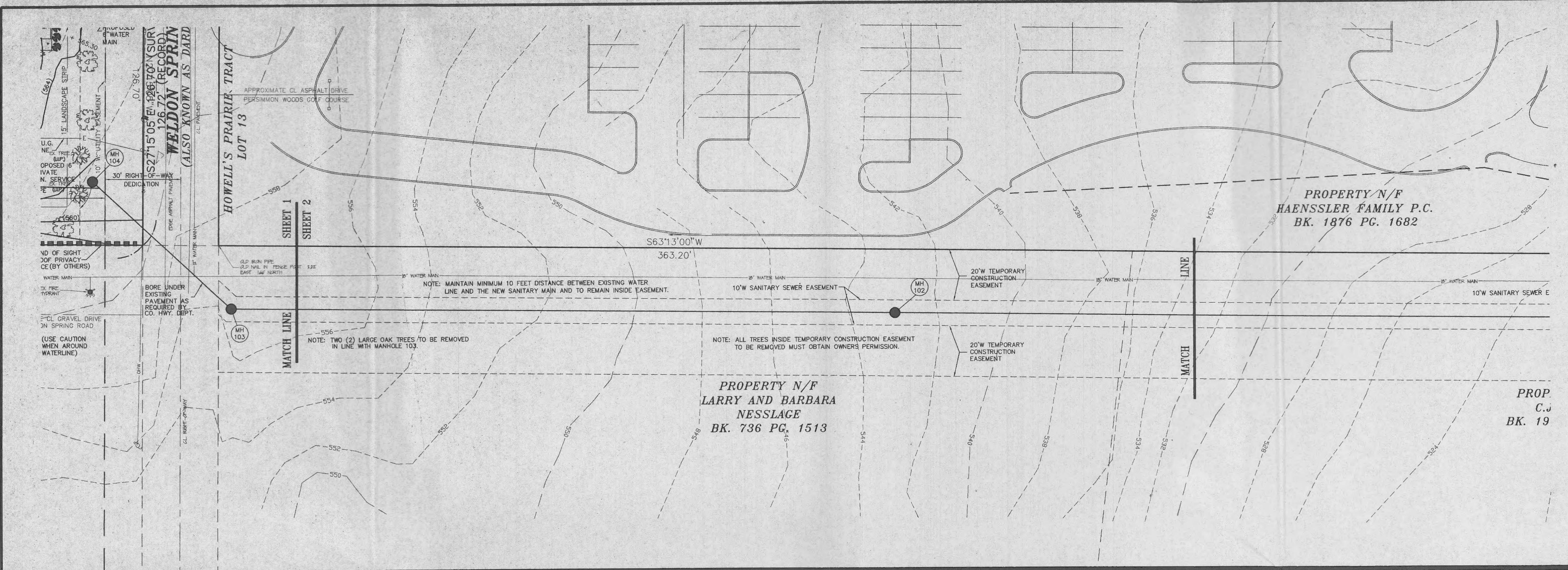
SWBT  
WELDON SPRING CENTRAL OFFICE  
NEW TELEPHONE EQUIPMENT BUILDING  
WELDON SPRING ROAD  
ST. CHARLES COUNTY, MISSOURI

BAX PROJECT NO 98-10453

SHEET

C-2

2 OF 6



\\bax\sv\45-061\w\dwg\10453\plan.dwg P1 Feb 25 10:47:03 2000 DUB