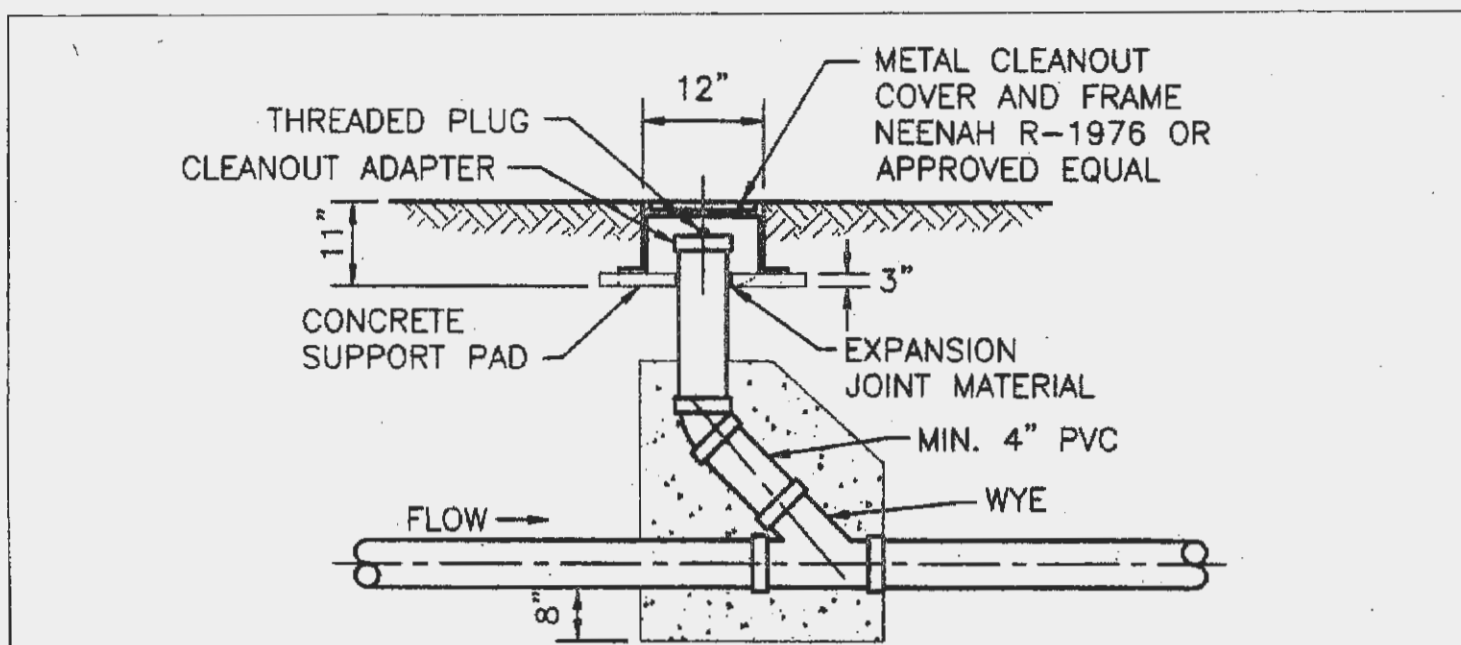
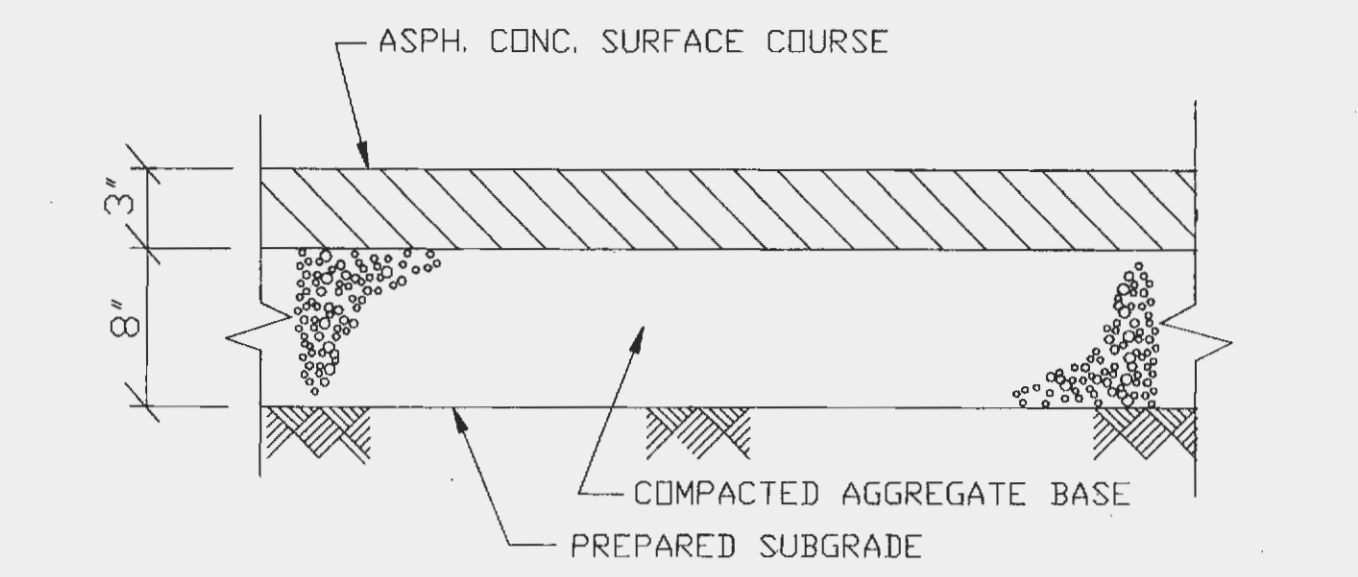


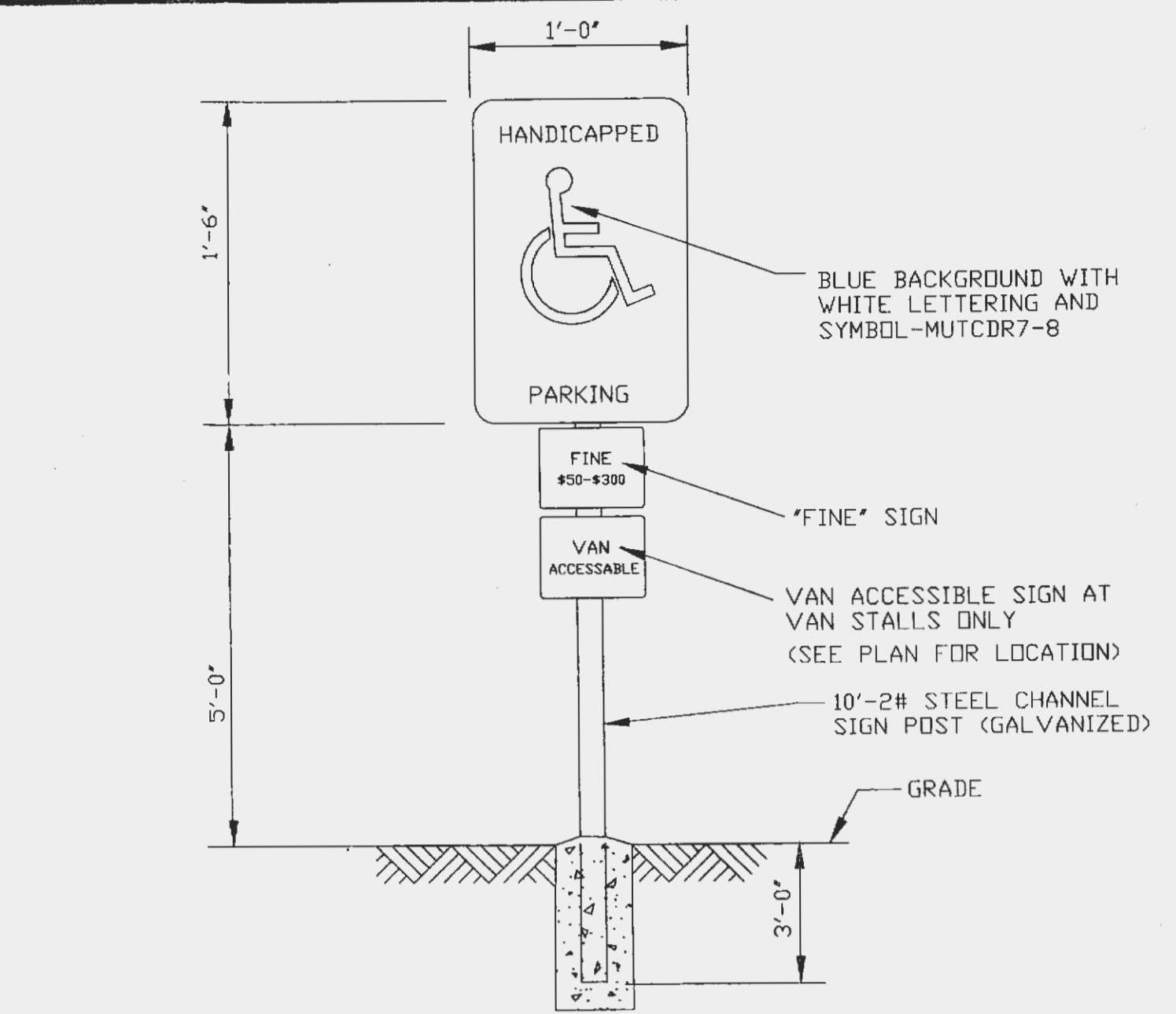
**11 HANDICAP RAMP DETAIL**  
SCALE: N.T.S. REF. DWG. C2



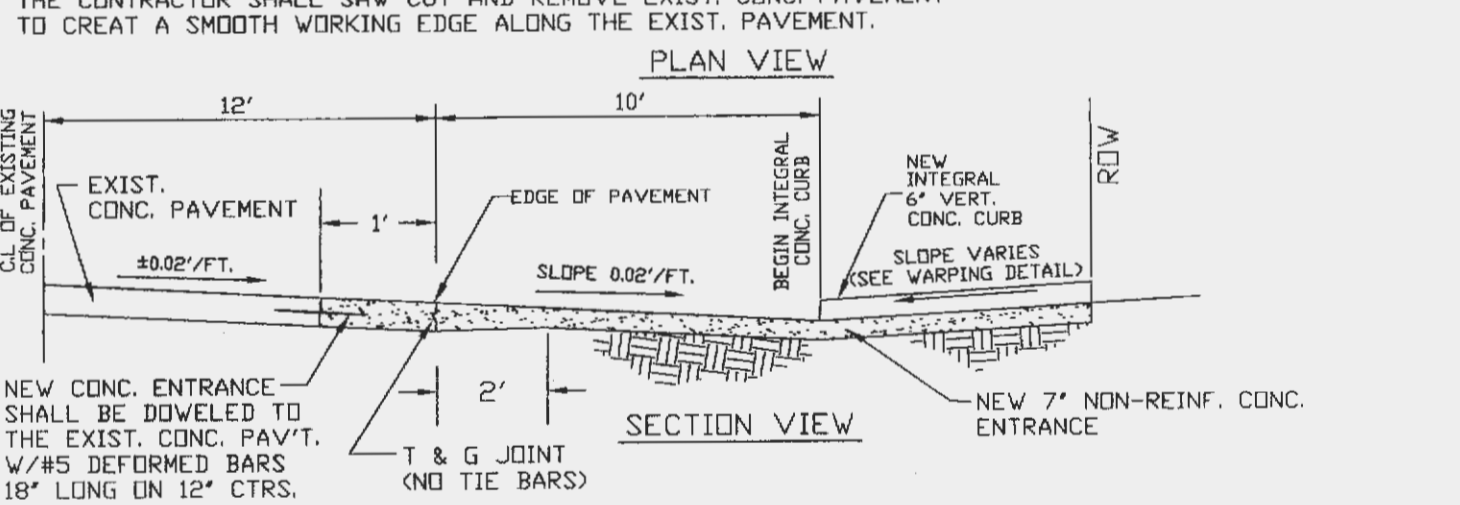
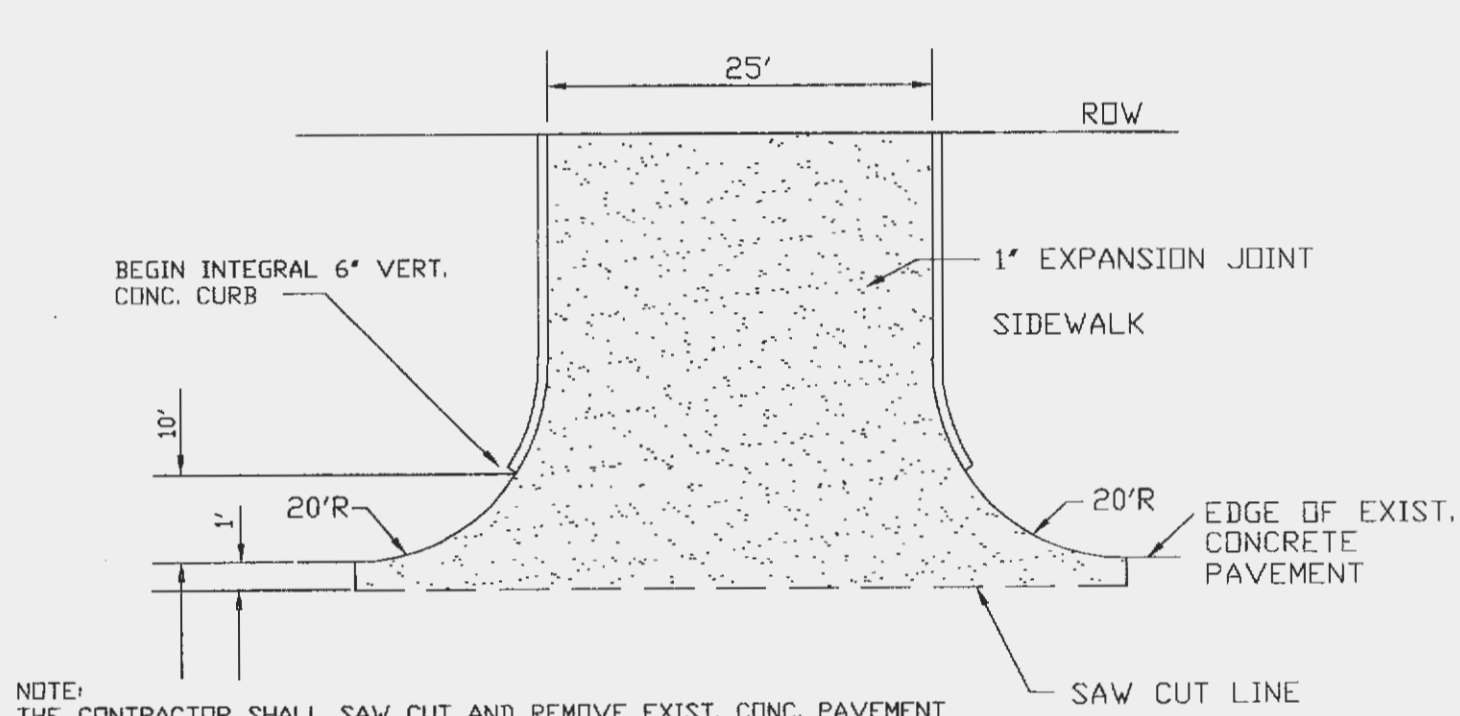
**METAL FRAME AND COVER TYPE CLEANOUT**



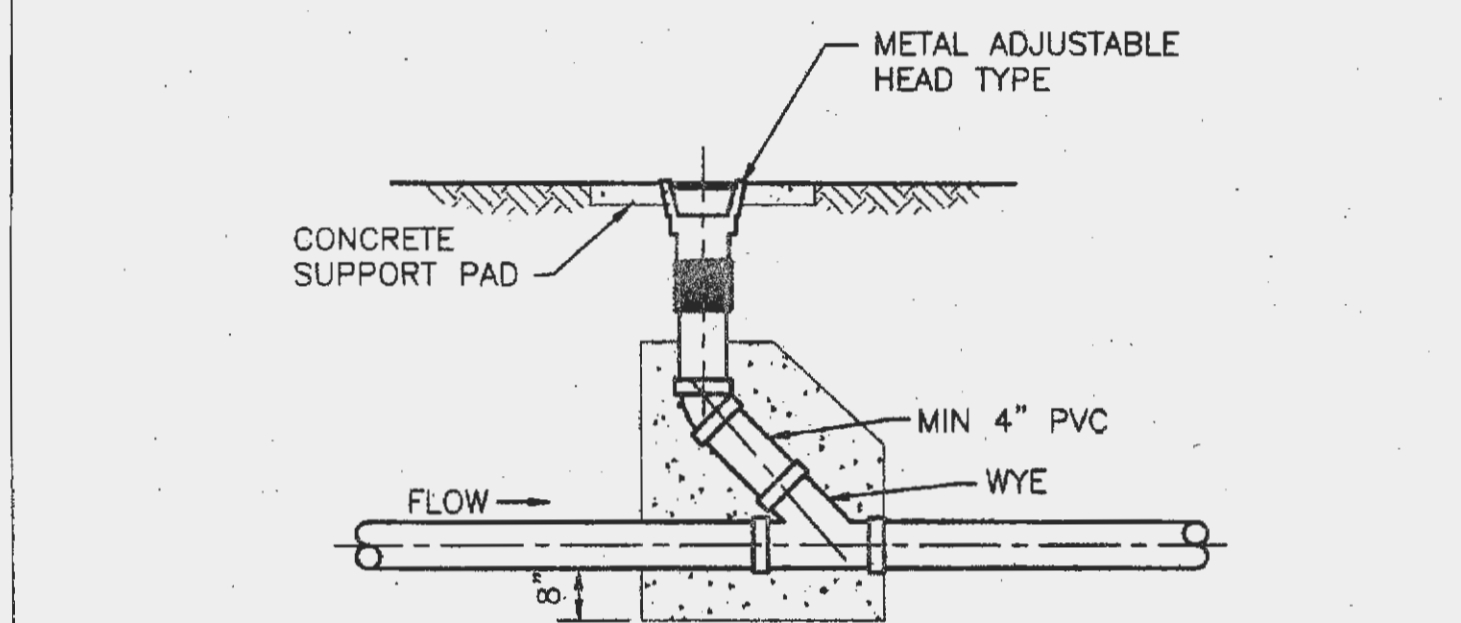
**5 ASPHALT PAVEMENT DETAIL**  
SCALE: N.T.S. REF. DWG. C2



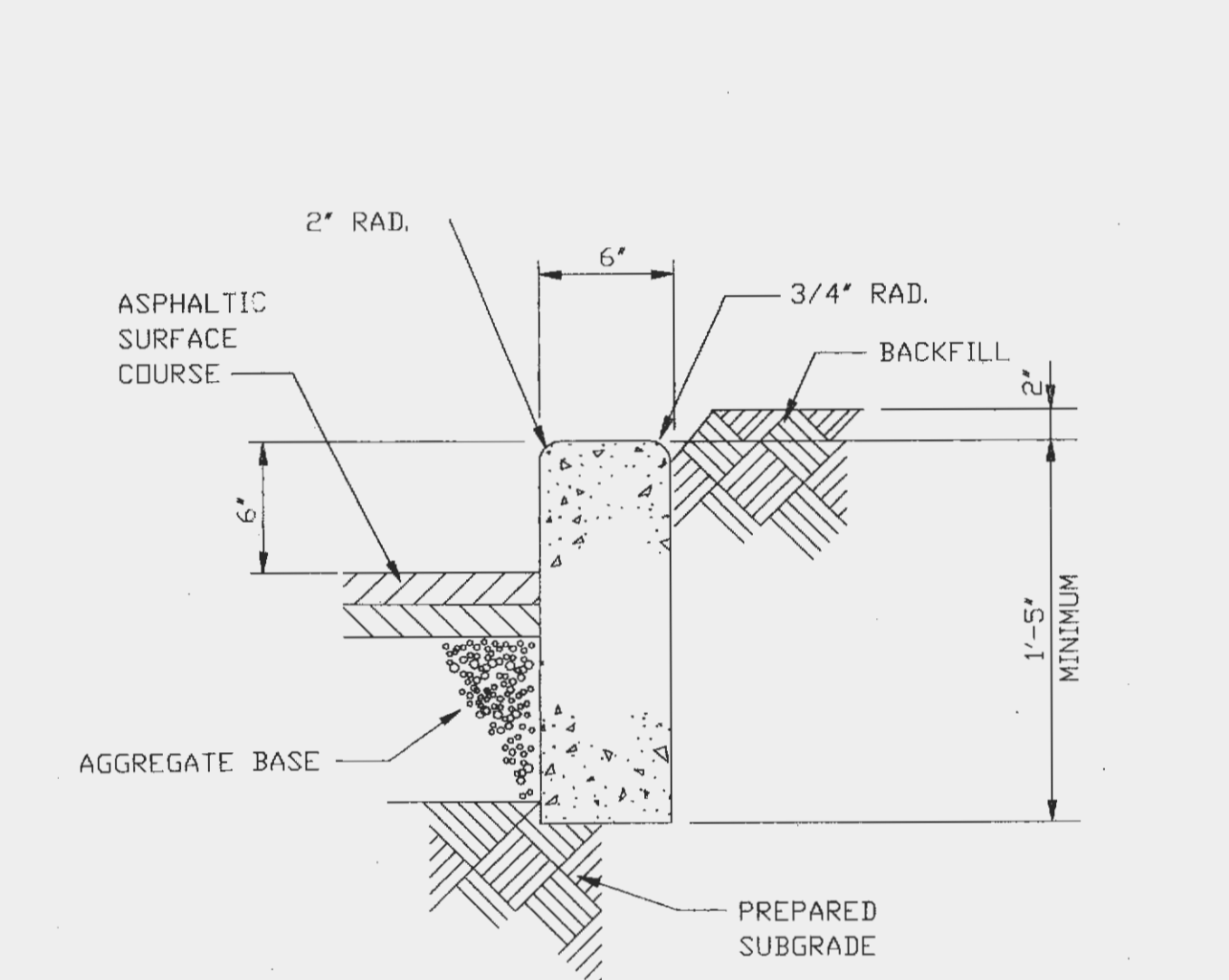
**2 HANDICAP SIGN DETAIL**  
SCALE: N.T.S. REF. DWG. C2



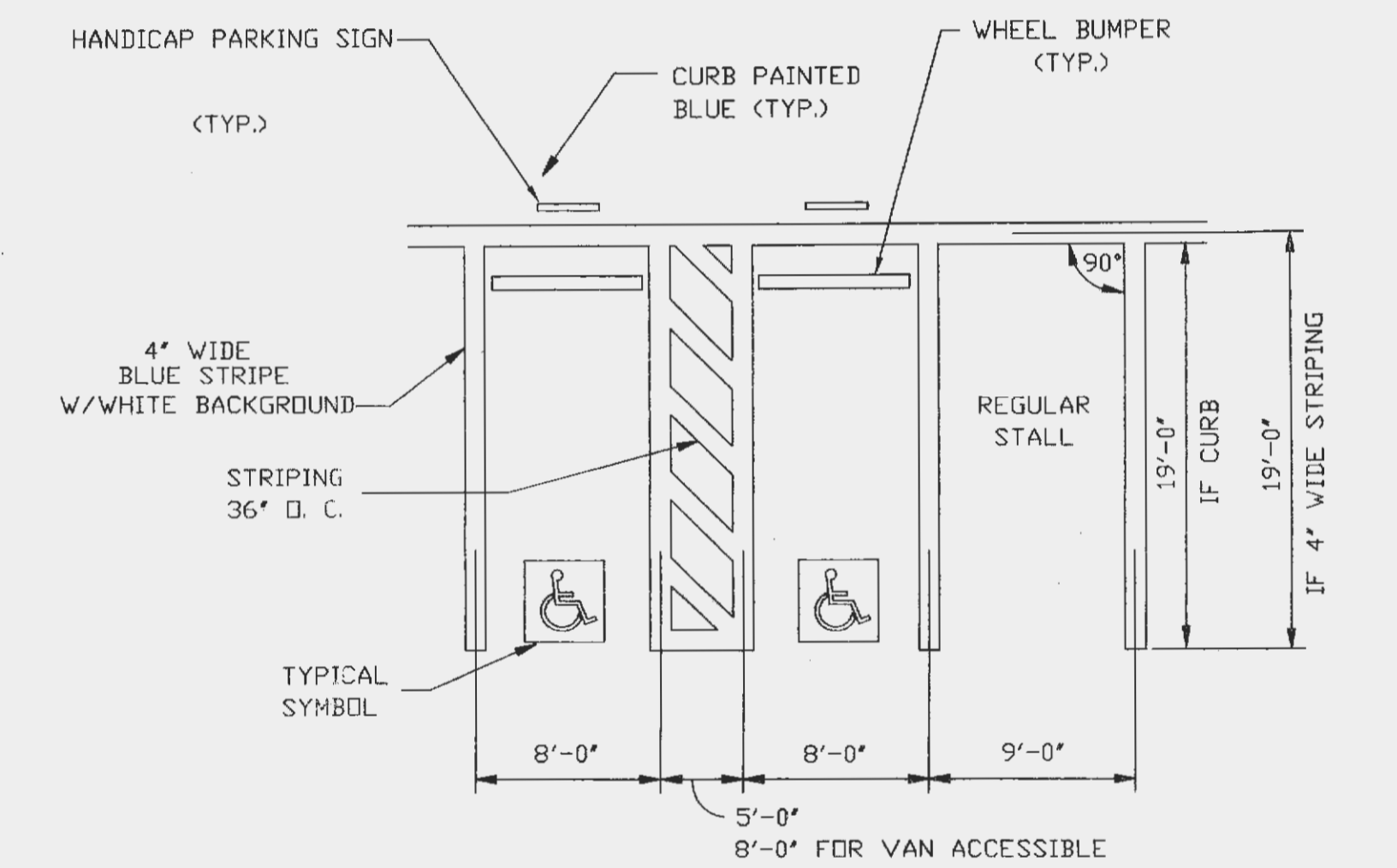
**10 CONCRETE ENTRANCE DETAIL**  
SCALE: N.T.S. REF. DWG. C2



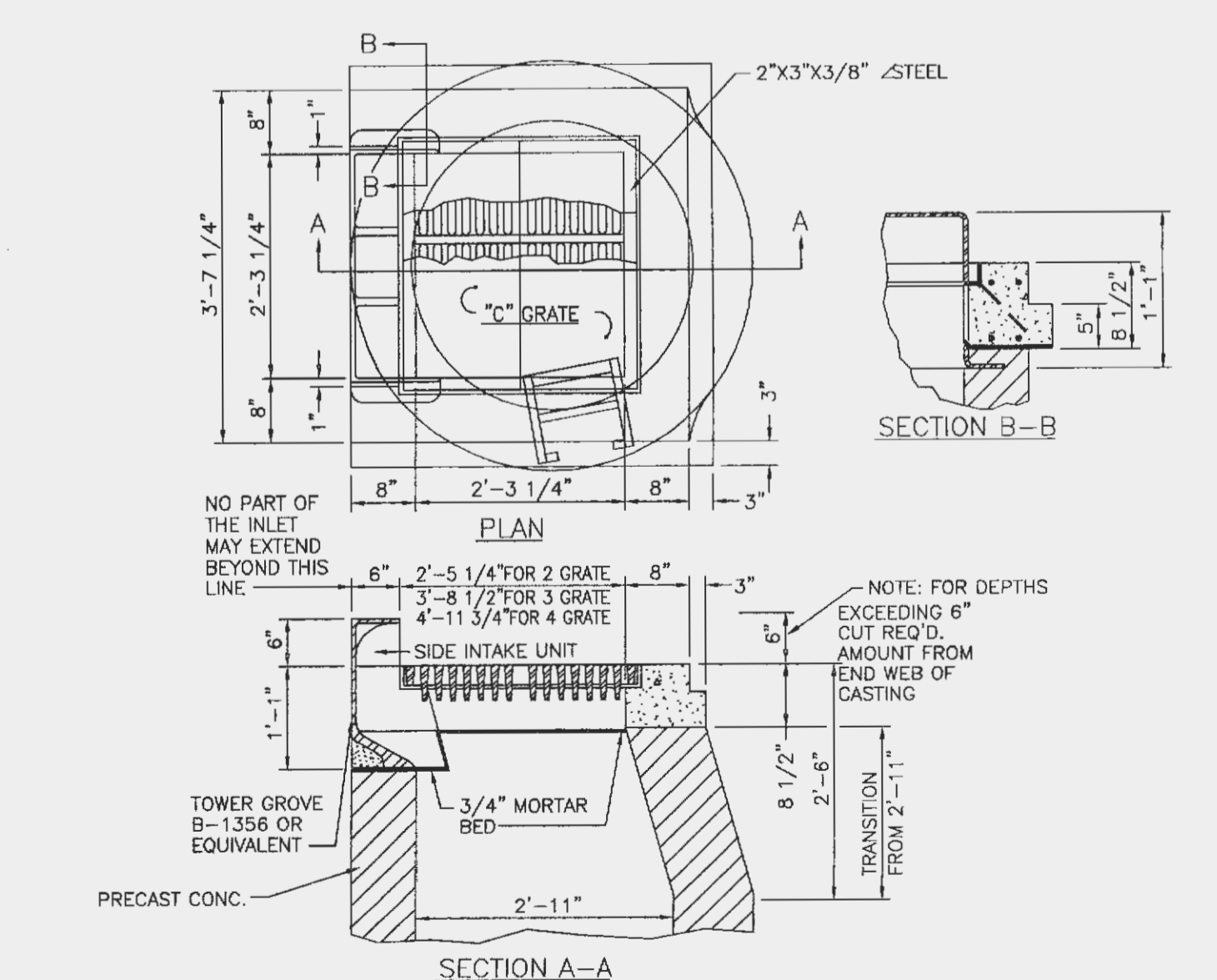
**ADJUSTABLE HEAD TYPE CLEANOUT**



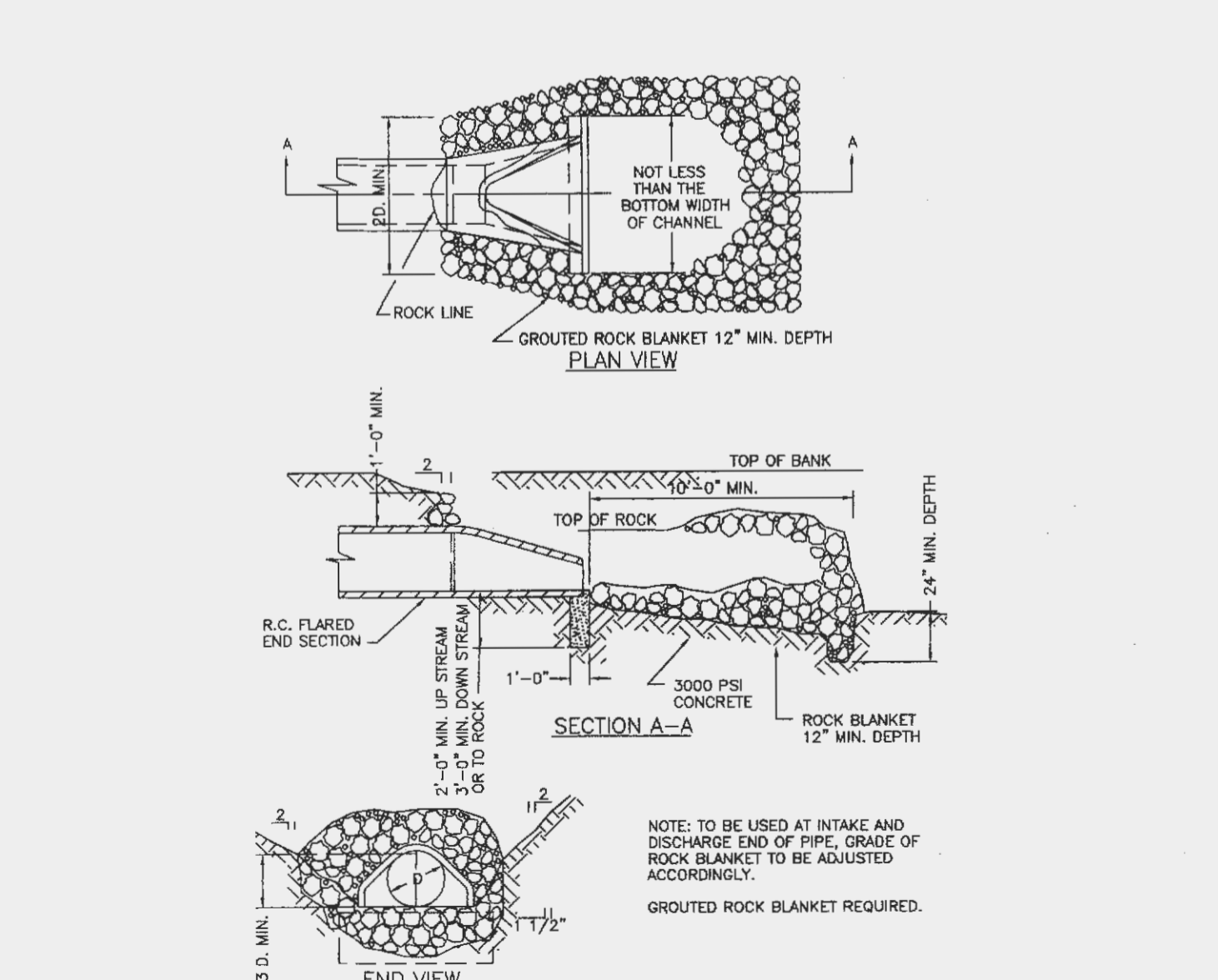
**4 CONC. CURB DETAIL**  
SCALE: N.T.S. REF. DWG. C2



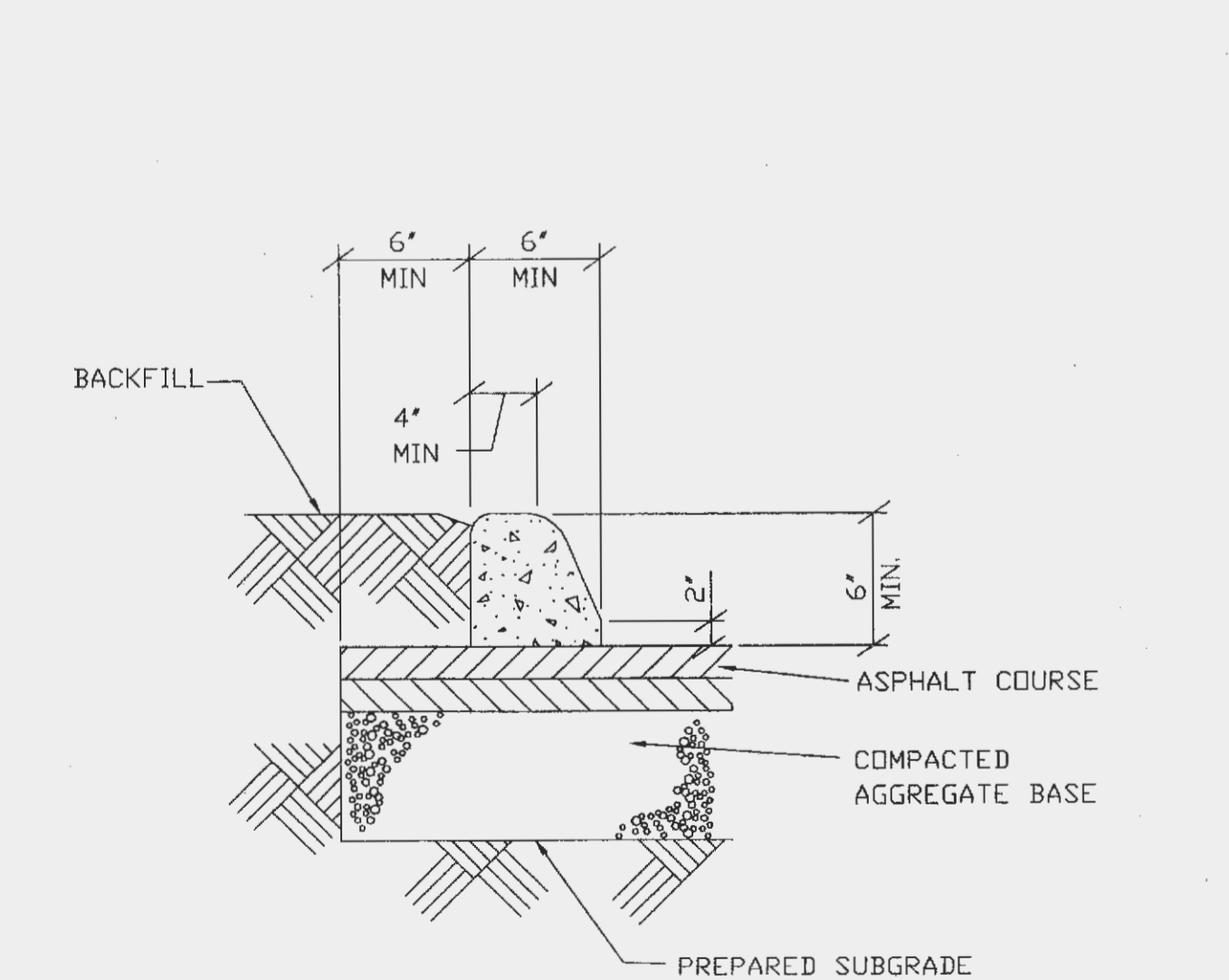
**1 HANDICAP STALL DETAIL**  
SCALE: N.T.S. REF. DWG. C2



**9 GRATE INLET W/SIDE INTAKE DETAIL**  
SCALE: N.T.S. REF. DWG. C4



**6 FLARED END SECTION DETAIL**  
SCALE: N.T.S. REF. DWG. C4



**3 TEMP. ASPHALT CURB DETAIL**  
SCALE: N.T.S. REF. DWG. C2

STATE OF MISSOURI  
J. F. [Signature]  
PROFESSIONAL ENGINEER  
116  
5/20/03

**THE SPA AT WINGHAVEN**  
**SITE DETAILS**  
**Cole & Associates Inc.**  
Planning - Civil Engineering - Land Surveying  
10777 Sunset Office Drive, Suite 10  
St. Louis, MO 63127 (314) 984-9887 FAX: 984-0587

Checked By	Drawn By	Project Number	Date	Sheet Number
JFH	BDG	02-245	02/25/03	C5

Revisions: **Δ** CITY REVIEW COMMENTS 4/10/03

THE PROFESSIONAL WHOSE SIGNATURE AND PERSONAL SEAL APPEAR HEREON ASSUMES RESPONSIBILITY ONLY FOR WHAT APPEARS ON THIS PAGE, AND DISCLAIMS (PURSUANT TO SECTION 327, 411 RSMO) ANY RESPONSIBILITY FOR ALL OTHER PLANS, SPECIFICATIONS, ESTIMATES, REPORTS, OR OTHER DOCUMENTS OR INSTRUMENTS NOT SEALED BY THE UNDERSIGNED PROFESSIONAL RELATING TO, OR INTENDED TO BE USED FOR, ANY PART OR PARTS OF THE PROJECT TO WHICH THIS PAGE REFERS.

FILE # 98316.46