

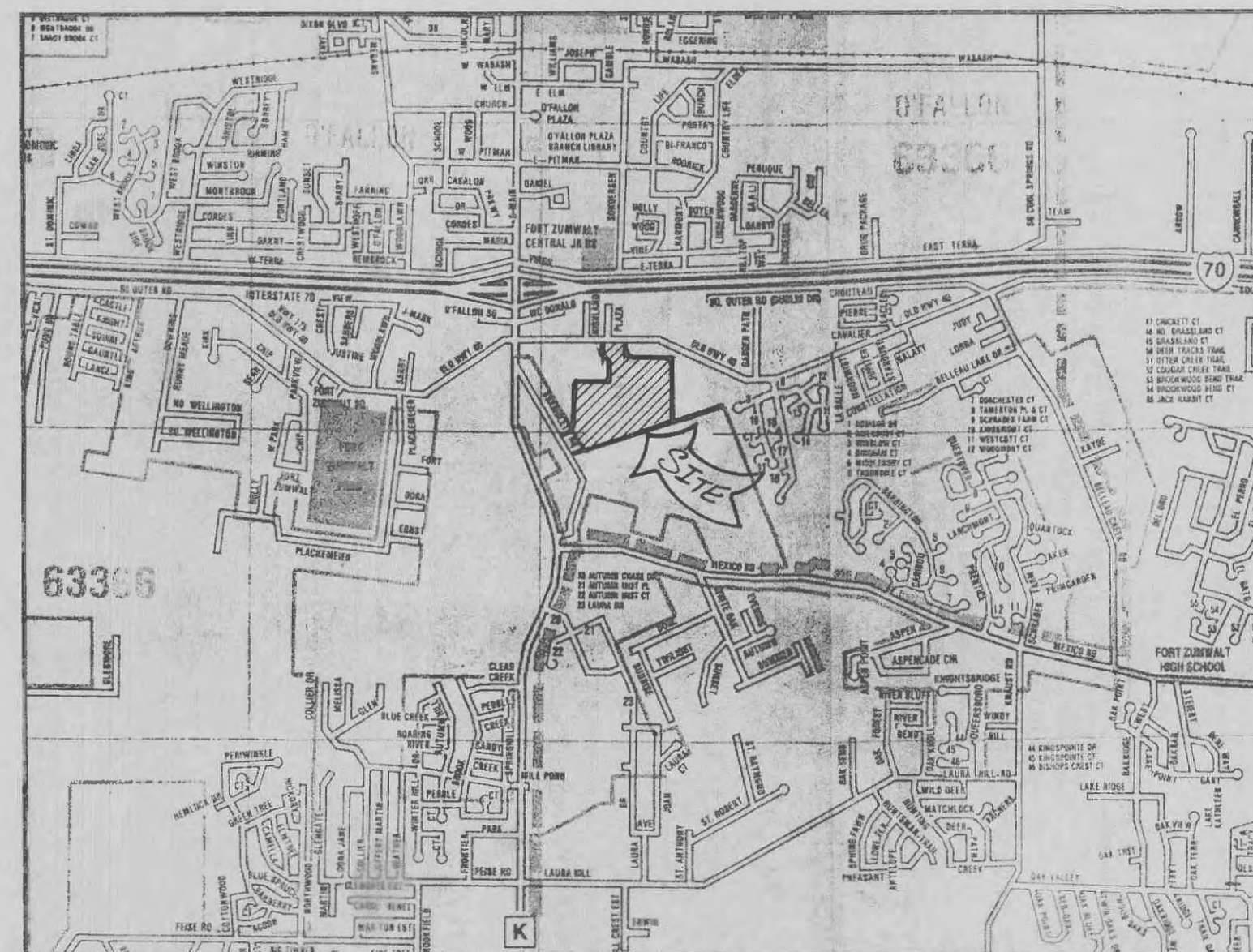
PLANS FOR THE CONSTRUCTION OF
 GRADING, SANITARY SEWERS, STORM SEWERS,
 WATER MAIN FACILITIES AND STREET PAVING
 FOR

the estates of SPRING HILL

A TRACT OF LAND IN THE FRACTIONAL
 SOUTHWEST QUARTER OF SECTION 29,
 TOWNSHIP 47 NORTH, RANGE 3 EAST,
 SITUATED IN THE CITY OF O'FALLON,
 ST. CHARLES COUNTY, MISSOURI

INDEX

1	COVER SHEET
2	NOTES & SPECIFICATIONS
3-4	FLAT PLAN
5-6	GRADING PLAN
7-8	STREET PROFILES
9-10	SANITARY SEWER PROFILES
11-12	OFF-SITE SANITARY SEWER
13	STORM SEWER PROFILES
14-15	DRAINAGE AREA MAP
16-19	CONSTRUCTION DETAILS

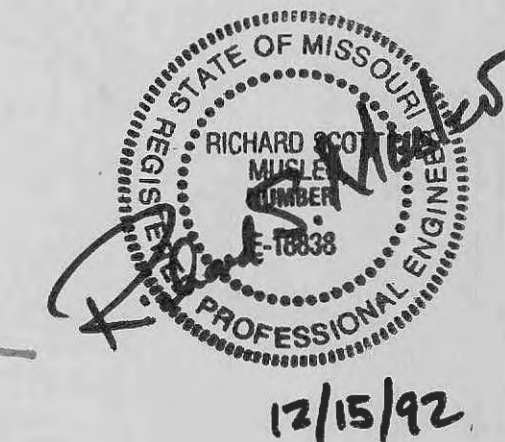


LOCATION MAP

BENCHMARK:
 BENCHMARK NUMBER 199,
 □ ON CURB IN SCHNUCK'S PARKING LOT
 STATION 3+10, 60' LEFT.
 ELEVATION = 577.22

CITY COPY
APPROVED AS NOTED
 2-9-93
 Frank Edwin

APPROVED
 DATE 11/13/92
 P & Z



PREPARED FOR:

COLONIAL HOMES INCORPORATED
 1135 COLONADE CENTER
 SUITE 318
 DES PERES, MISSOURI 63131
 TELEPHONE: (314) 822-5442

DATE:	NO.:	REVISION:
Cole & Associates Inc. Planning • Civil Engineering • Land Surveying 10805 Sunset Office Drive, Suite L-101 St. Louis, MO 63127 (314) 984-9887 FAX: 984-0587		
MUSLER ENGINEERING COMPANY 6240 Mexico Road St. Peters, Missouri 63376 Telephone: (314) 441-4555		
CIVIL ENGINEERING - PLANNING - LAND SURVEYING		
DATE:	DRAWN:	CHECKED:
OCT. '92	D.E.H.	R.S.M.
PROJECT NO.:	SHEET NO.:	
92-016	1 of 19	