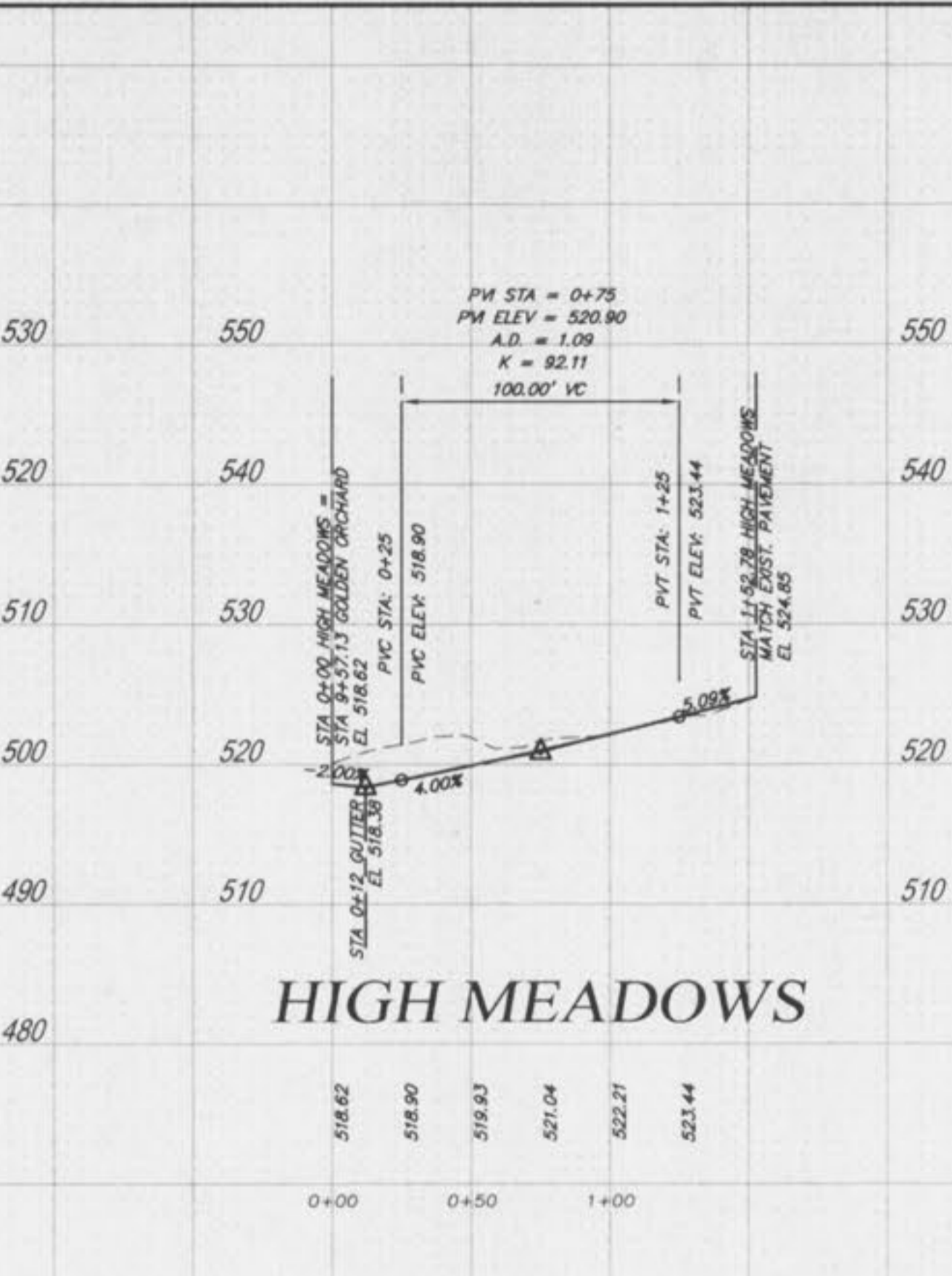
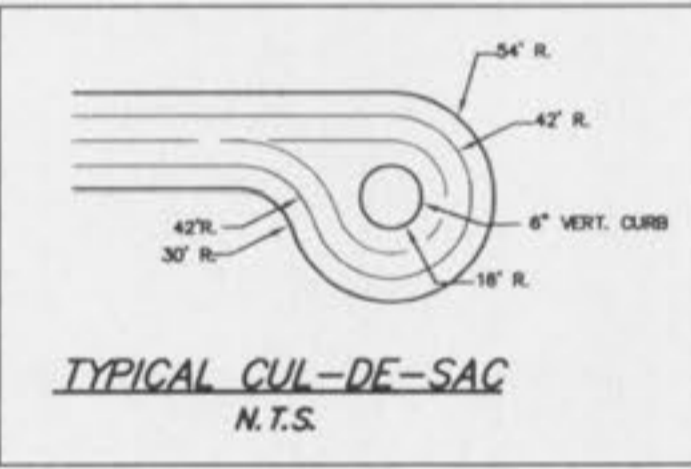
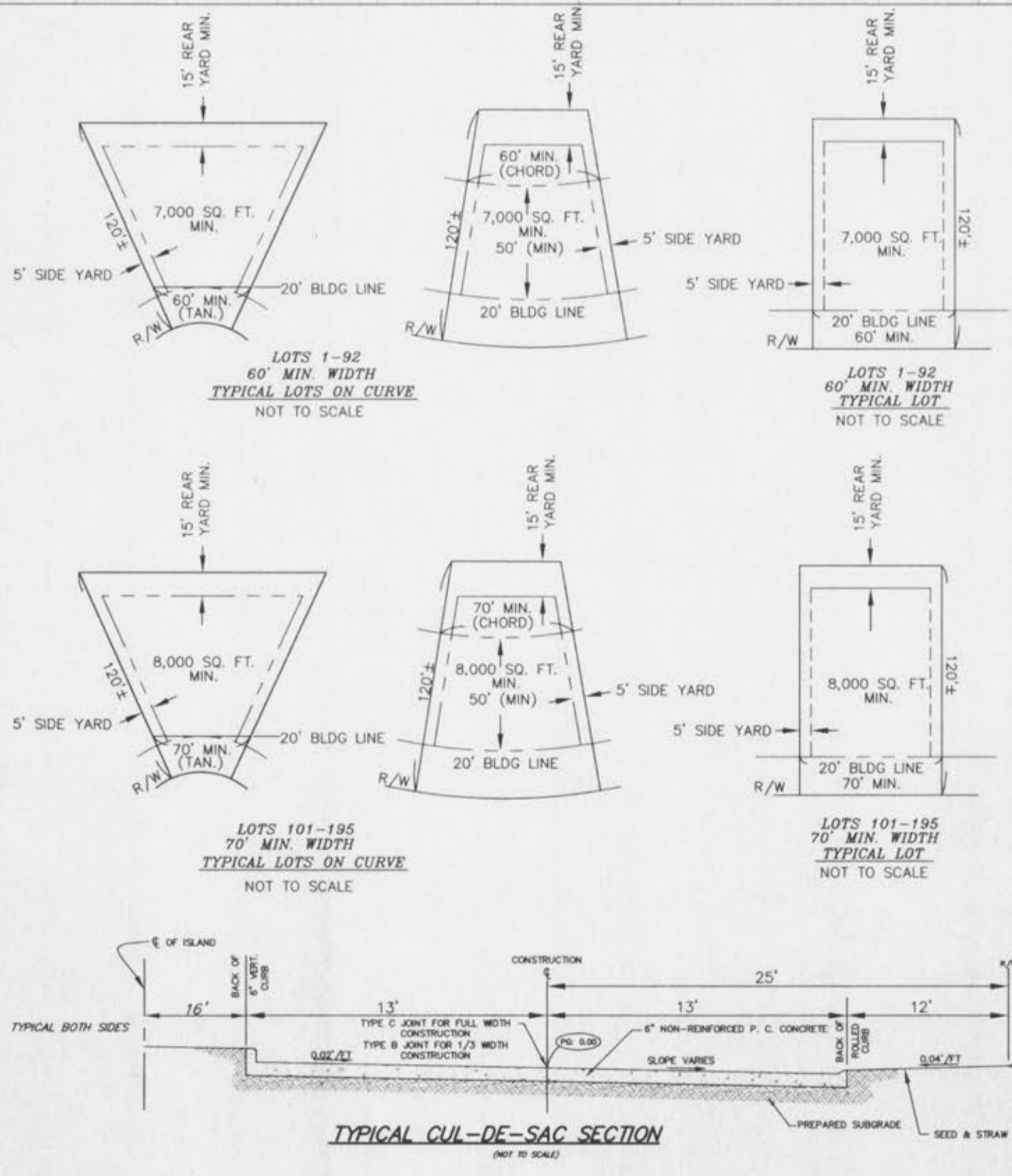


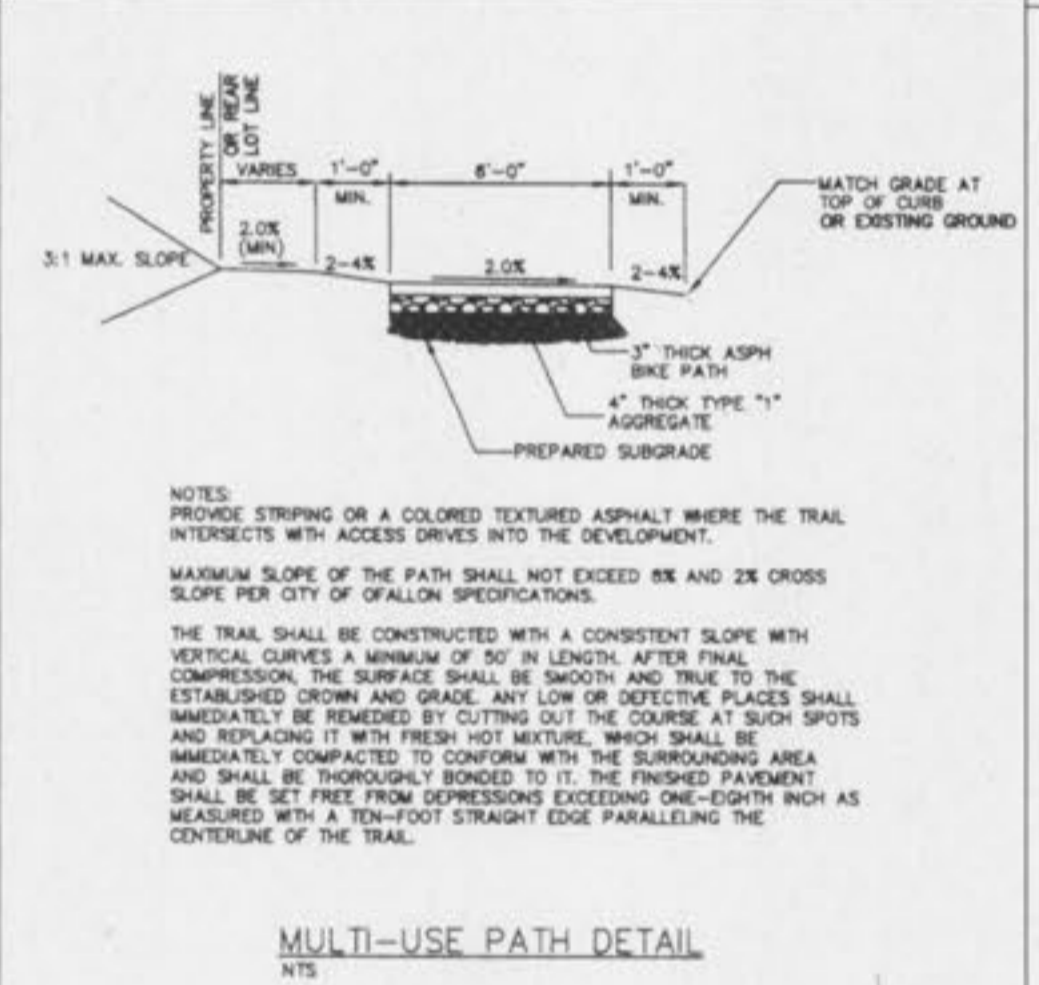
BROAD BROOK COURT



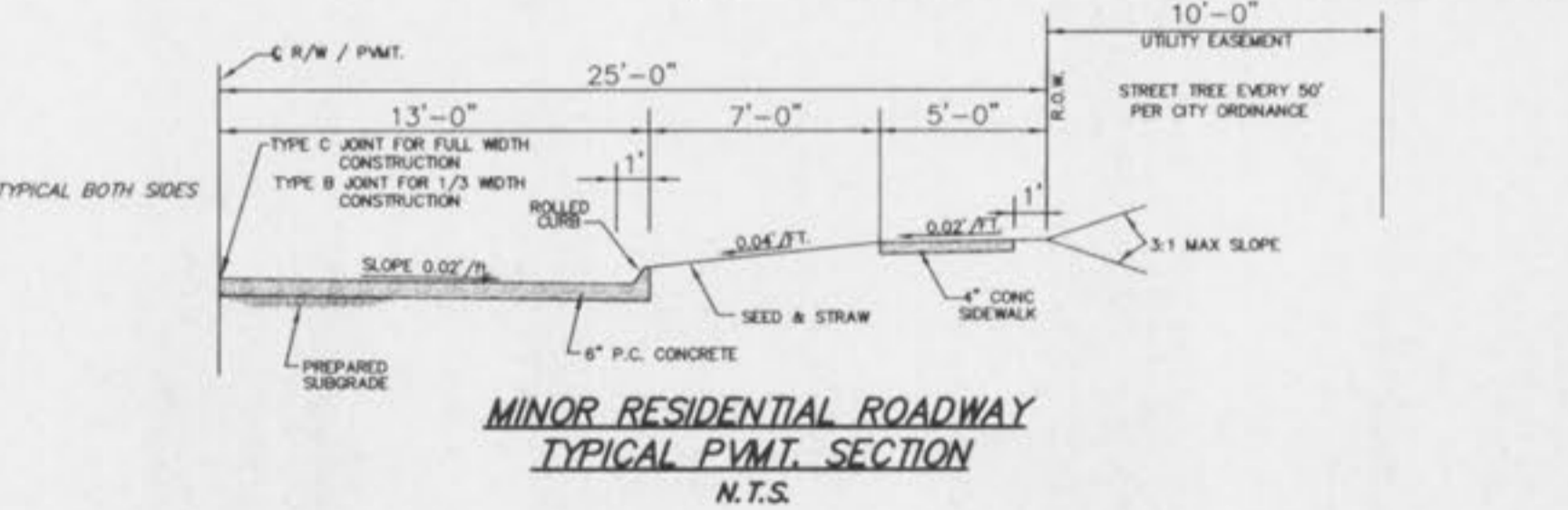
HIGH MEADOWS



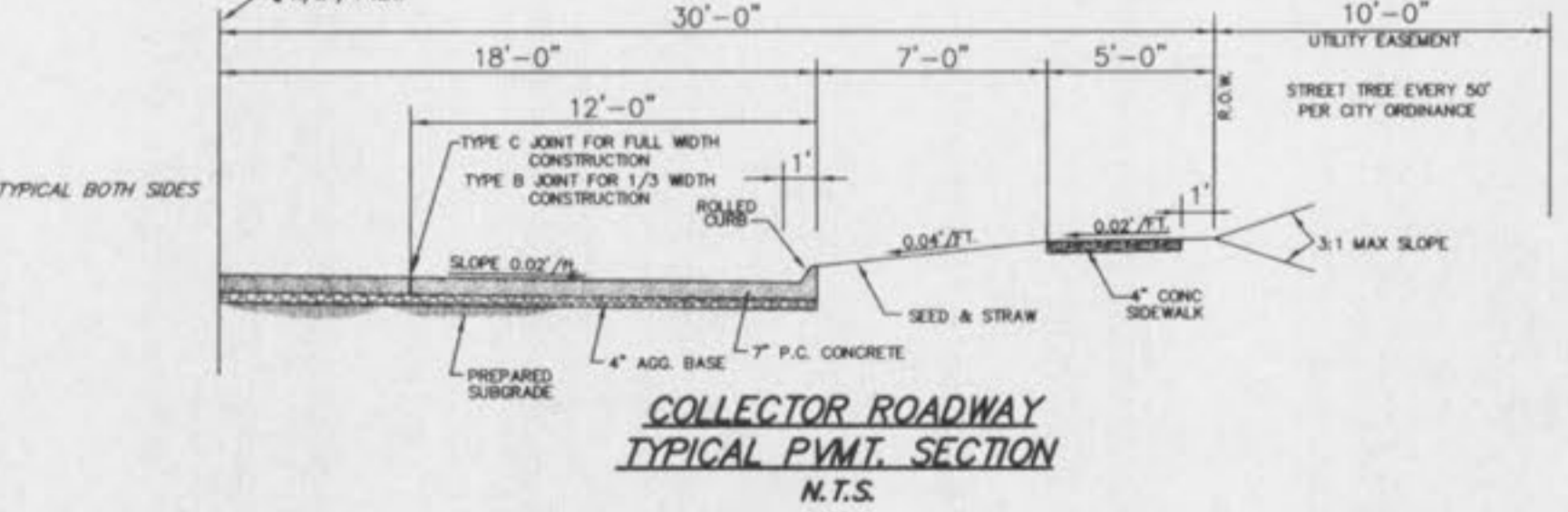
TYPICAL CUL-DE-SAC
N.T.S.



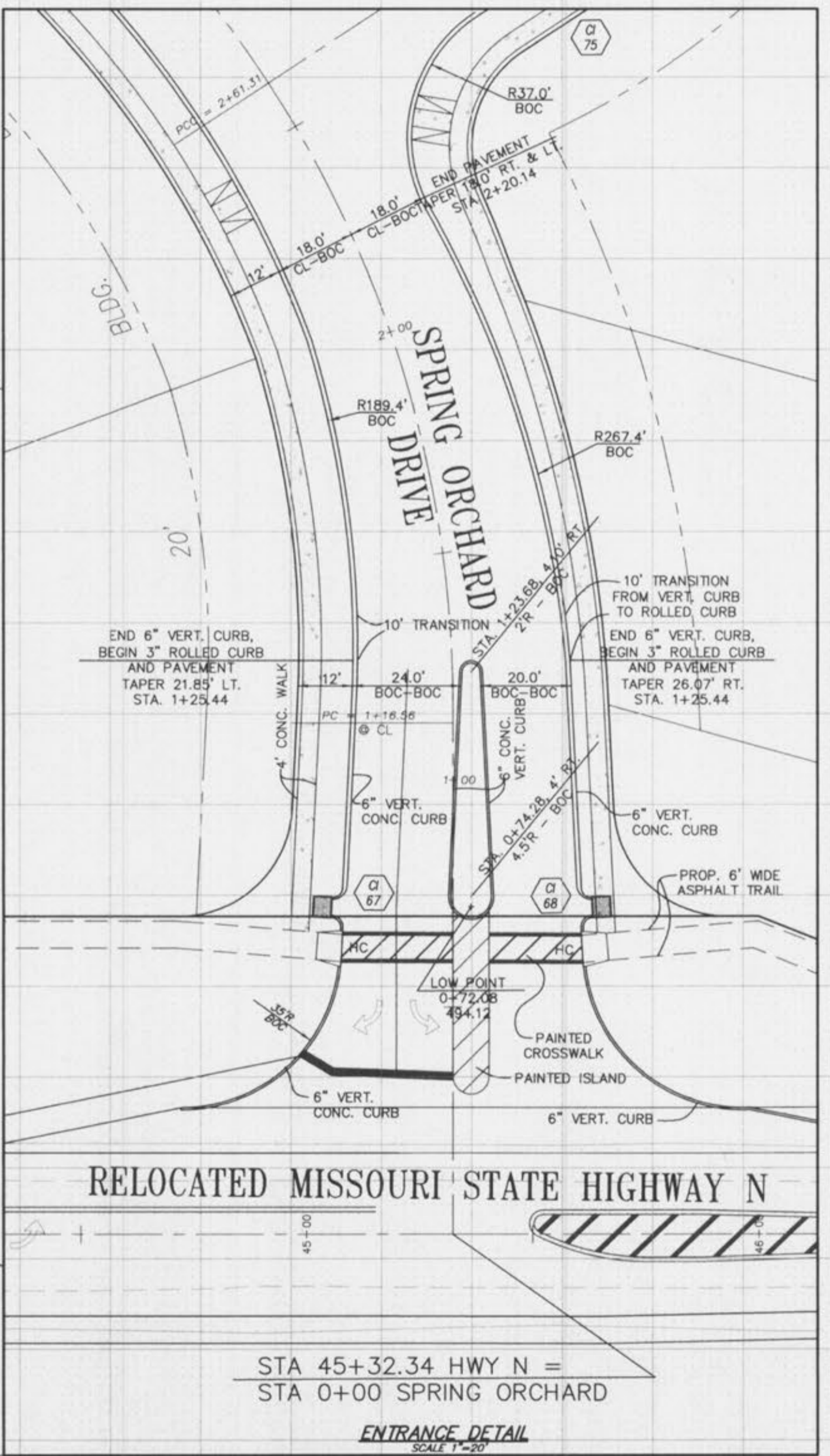
MULTI-USE PATH DETAIL
N.T.S.



MINOR RESIDENTIAL ROADWAY
TYPICAL P.V.M.T. SECTION
N.T.S.



COLLECTOR ROADWAY
TYPICAL P.V.M.T. SECTION
N.T.S.



RELOCATED MISSOURI STATE HIGHWAY N

STA 45+32.34 HWY N =
STA 0+00 SPRING ORCHARD

ENTRANCE DETAIL
SCALE 1"=20'

ISSUE	REMARKS/DATE
1	9-06-01 FIRST SUBMITTAL
2	9-26-01 D.C.S.D. COMMENTS
3	10-05-01 D.C.S.D. & CITY COMMENTS
4	10-12-01 INHOUSE REVIEW
5	10-26-01 CITY COMMENTS
6	11-26-01 CITY COMMENTS

PREPARED FOR:
N & K HIGHWAYS, L.L.C.
5091 NEW BAUMGARTNER ROAD
ST. LOUIS, MISSOURI 63129
(314) 487-6717



PREPARED BY:
STERLING CO.
ENGINEERS & SURVEYORS
5055 NEW BAUMGARTNER ROAD
ST. LOUIS, MISSOURI 63129
(314)-487-0440 FAX 487-8944
E-Mail: Sterling@sterling-eng-sur.com

PROJECT: **SPRING ORCHARD**
DRAWN: [] DESIGNED: [] CHECKED: []
SHEET TITLE: **STREET PROFILES & DETAILS**

NO.	01	01	008
M.S.D.	P#	N/A	SHEET
DIGITAL FILE LOCATION			13
DATE			OF
			29