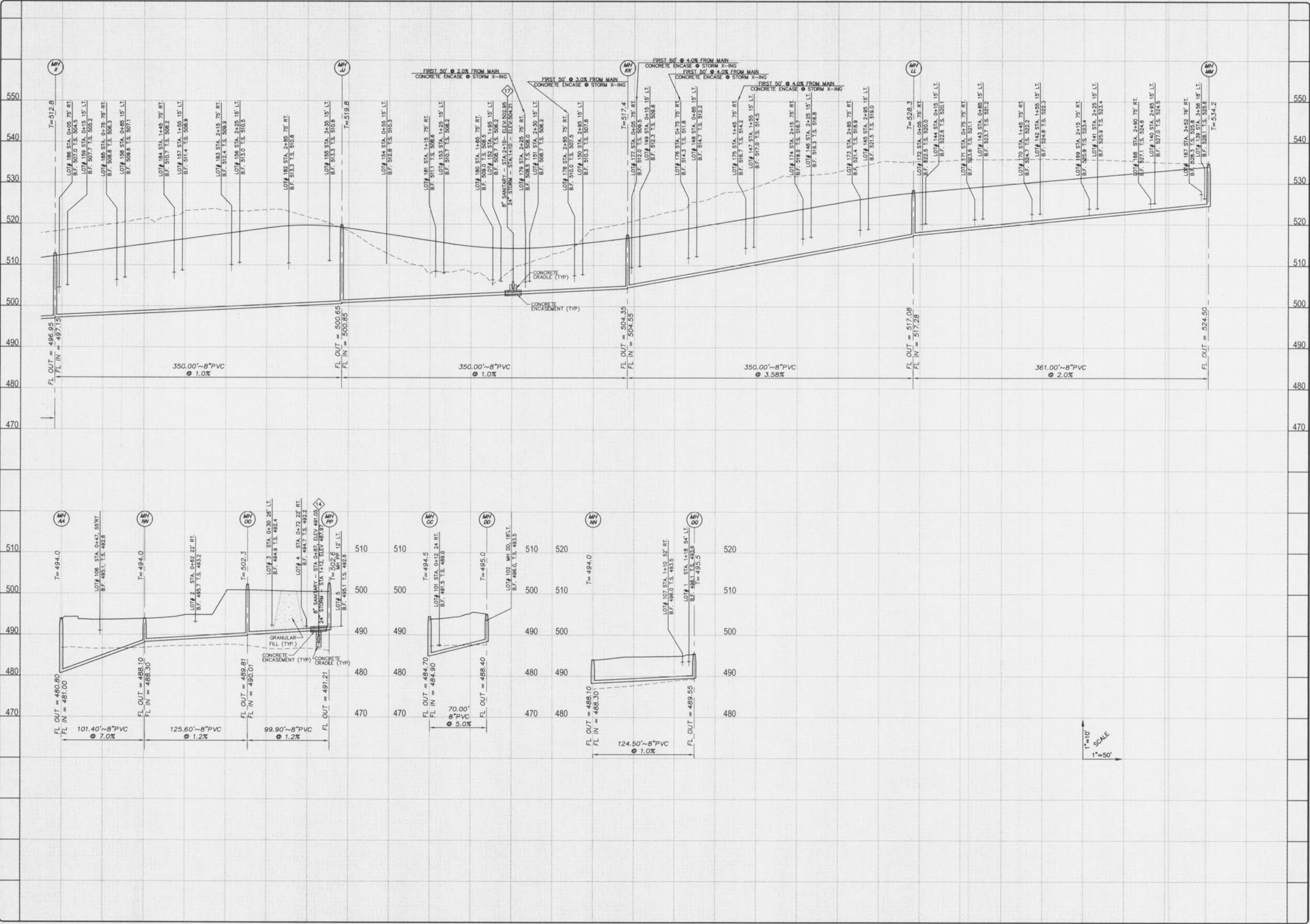


K:\AD\010008 LDEFFLER\IMPROVEMENT PLANS\10088son.dwg 12/07/2008 11:00:16 AM CST



ISSUE	REMARKS/DATE
1	9-06-01 FIRST SUBMITTAL
2	9-26-01 REVISIONS PER D.C.S.D.
3	10-05-01 D.C.S.D. & CITY COMMENTS
4	10-19-01 REV SAN LINE D.J. PER D.C.S.D.
5	10-12-01 REVISE LATERALS PER CITY
6	10-26-01 CITY COMMENTS

PREPARED FOR:
N & K HIGHWAYS, L.L.C.
 5091 NEW BAUMGARTNER ROAD
 ST. LOUIS, MISSOURI 63129
 (314) 487-6717

THE **STERLING** CO.
 ENGINEERS & SURVEYORS
 5055 NEW BAUMGARTNER ROAD
 ST. LOUIS, MISSOURI 63129
 (314)-487-0440 FAX 487-8944
 E-Mail: Sterling@sterling-eng-sur.com

PROJECT:	SPRING ORCHARD	
DRAWN:	DESIGNED:	CHECKED:
NO. 01 01 008	M.S.D. SHEET 17	OF 29
P# N/A	SHEET TITLE: SANITARY SEWER PROFILES	