

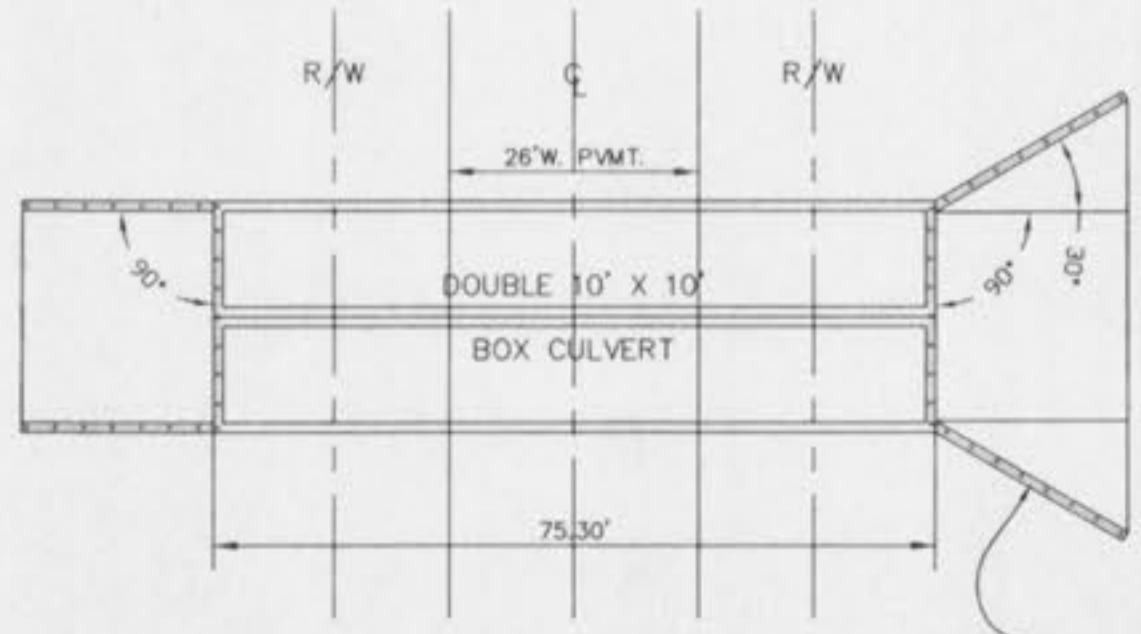
- LEGEND**
- 1 FABRIC
  - 2 END CORNER OR PULL POST
  - 3 LINE POST
  - 4 GATE POST
  - 5 BRACE
  - 6 TRUSS ROD
  - 7 GATE FRAME
  - 8 STRETCHER BAR
  - 9 1/4" X 3/4" PLATE
  - 10 STRETCHER BAR BAND
  - 11 END OR CORNER CLAMP
  - 12 END OR CORNER CLAMP
  - 13 POST TOPS (OTHER THAN LINE POSTS)
  - 14 FABRIC TIES
  - 15 LINE POST TOPS
  - 16 ONE-HALF FABRIC HEIGHT OR AS RECOMMENDED BY MANUFACTURER

	WIDTH	SIZE (IN.)	LBS./FT.
1 END CORNER OR PULL POST	N/A	2 1/2" DIA.	5.79
3 LINE POST	N/A	2" DIA.	3.65
4 GATE POST (SINGLE GATE OR 1 LEAF OF DOUBLE)	≤ 6'	2 1/2" DIA.	5.79
	≤ 13'	2 1/2" DIA.	9.10
	≤ 18'	6" DIA.	18.97
	> 18'	8" DIA.	24.70
5 BRACE	N/A	1 1/2" DIA.	2.27
6 TRUSS ROD	N/A	3/8"	-
7 GATE FRAME	N/A	1 1/2" DIA.	2.72

DESCRIPTION	HEIGHT OF FENCE		
	48"	60"	72"
2 END CORNER & PULL POST	30"	36"	36"
	36"	42"	42"
	42"	48"	48"
3 LINE POST	10"	12"	12"
	24"	27"	36"
	30"	36"	42"
4 GATE POST	10"	12"	12"
	30"	36"	36"
	36"	42"	42"

**GENERAL NOTES:**  
 WEIGHTS OF MATERIALS SHOWN IN TABLE ARE FOR ASTM F 1043, GROUP 1A. SIZES SHOWN ARE FOR STEEL AND ALUMINUM. EQUIVALENT ASTM F 1043 ALTERNATIVES MAY BE USED.  
 PULL POSTS SHALL BE USED AT SHARP BREAKS IN VERTICAL GRADE OR AT APPROXIMATE 500' CENTERS ON STRAIGHT RUNS OR AS DIRECTED BY THE ENGINEER.  
 DRILLED HOLES IN SOLID ROCK SHALL PROVIDE A DIAMETER OF NOT LESS THAN 2" GREATER THAN THE MAXIMUM TRANSVERSE DIMENSION OF THE POST SECTION.  
 ALL POSTS SHOWN HAVE PROVISIONS TO SECURELY HOLD THE TOP TENSION WIRE IN POSITION AND ALLOW FOR REMOVAL AND REPLACEMENT OF A POST WITHOUT DAMAGING THE TOP TENSION WIRE.  
 ALL FENCE FABRIC SHALL BE BLACK VINYL COATED.  
 ALL POSTS AND APPURTENANCES SHALL BE PAINTED BLACK.

MISSOURI HIGHWAY AND TRANSPORTATION COMMISSION	
CHAIN-LINK FENCE	
07-01-2001	607.10T 1/1

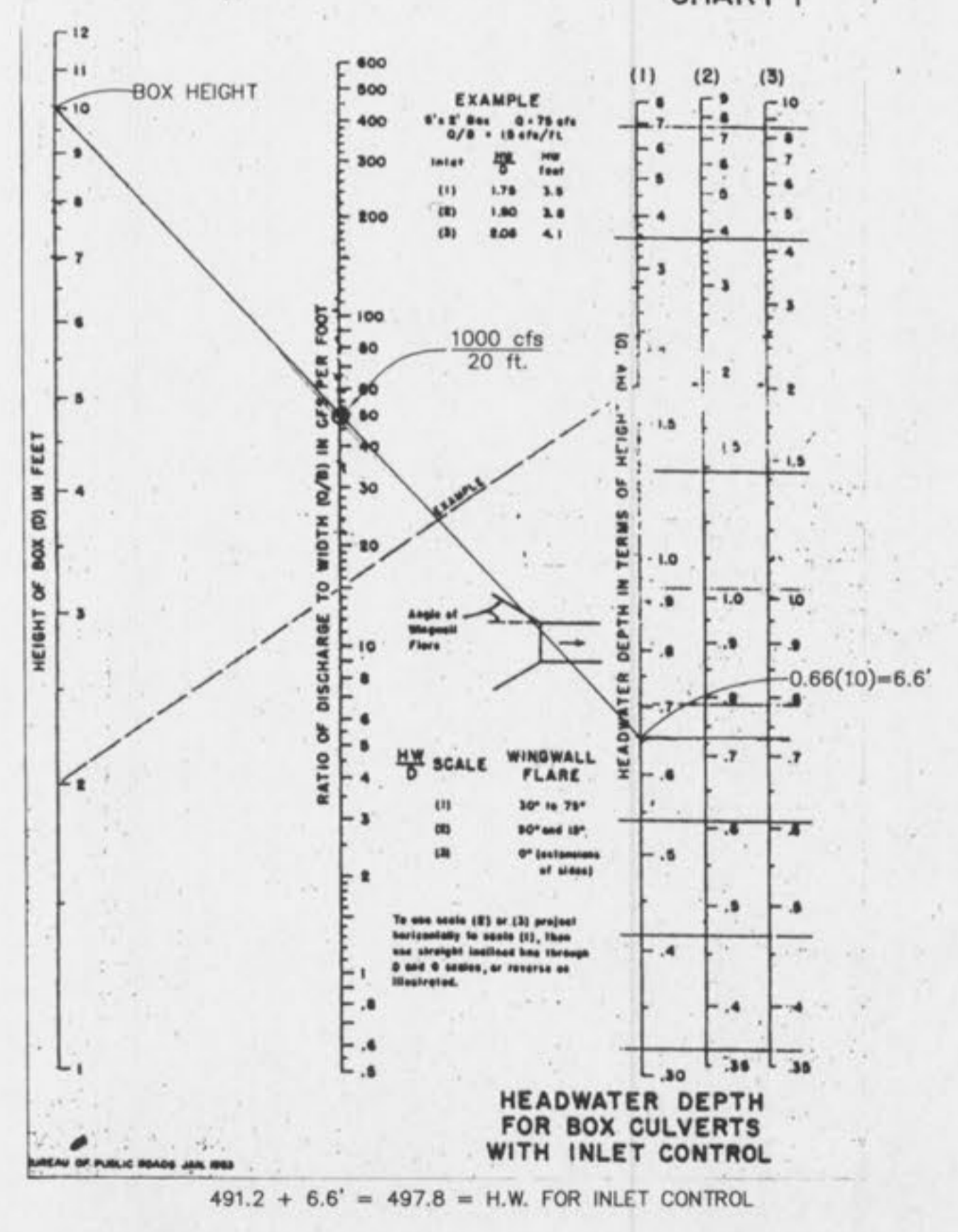


**BOX CULVERT PLAN VIEW**  
1" = 20"

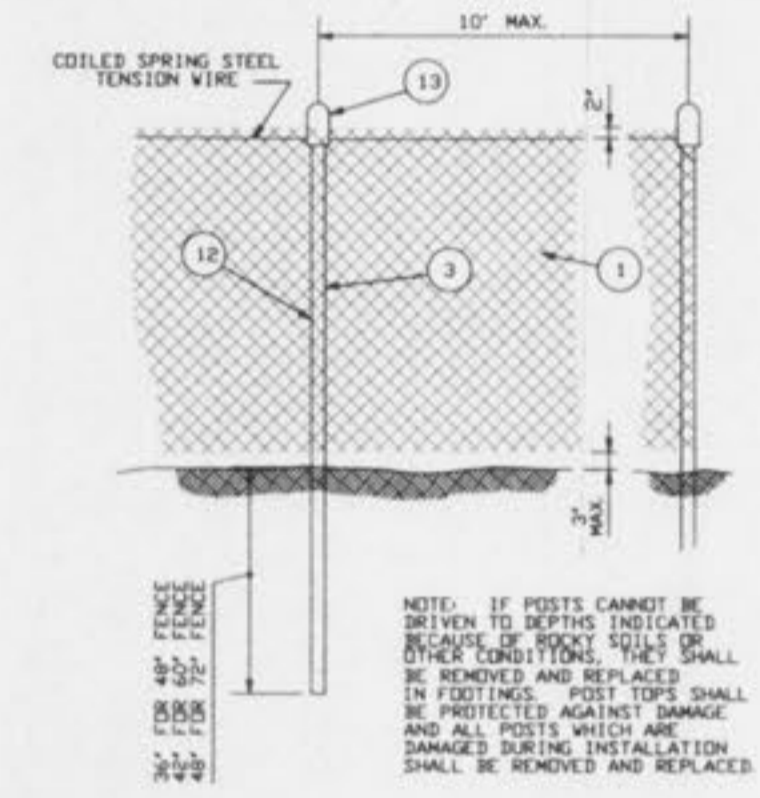
- NOTES:**
- BOX CULVERT TO BE PRECAST AND BUILT PER M&DOT DETAILS 703.40C, 703.41C AND 703.45A.
  - NO FLY ASH IS TO BE USED IN CONCRETE.
  - GRANULAR FILL REQUIRED BENEATH PAVEMENT AND WITHIN 1:1 SHEAR PLANE OF PAVEMENT.
  - ALL JOINTS TO BE SEALED WITH MASTIC AND WRAPPED WITH FILTER FABRIC PER CITY OF O'FALLON.



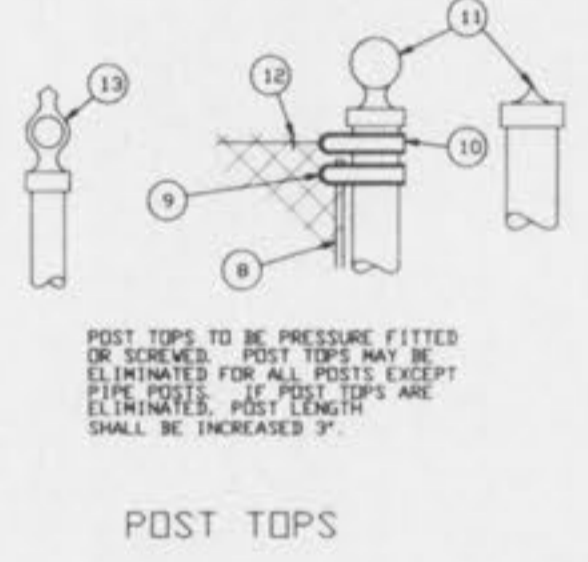
**DRAINAGE AREA MAP**  
1" = 2000'



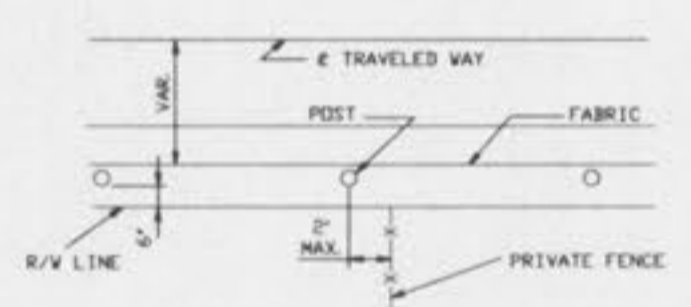
THE UNDERGROUND UTILITIES SHOWN HEREON WERE PLOTTED FROM AVAILABLE INFORMATION AND DO NOT NECESSARILY REFLECT THE ACTUAL EXISTENCE, NONEXISTENCE, SIZE, TYPE, NUMBER OR LOCATION OF THESE OR OTHER UTILITIES. THE GENERAL CONTRACTOR SHALL BE RESPONSIBLE FOR VERIFYING THE ACTUAL LOCATION OF ALL UNDERGROUND UTILITIES, SHOWN OR NOT SHOWN, AND SAID UTILITIES SHALL BE LOCATED IN THE FIELD PRIOR TO ANY GRADING, EXCAVATION OR CONSTRUCTION OF IMPROVEMENTS. THESE PROVISIONS SHALL IN NO WAY ABSOLVE ANY PARTY FROM COMPLYING WITH THE UNDERGROUND FACILITY SAFETY AND DAMAGE PREVENTION ACT, CHAPTER 319, RSMo.



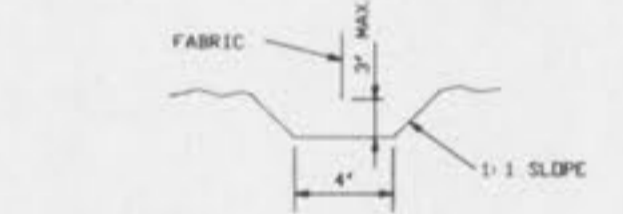
**ALTERNATE LINE POST ANCHORAGE (DRIVEN)**



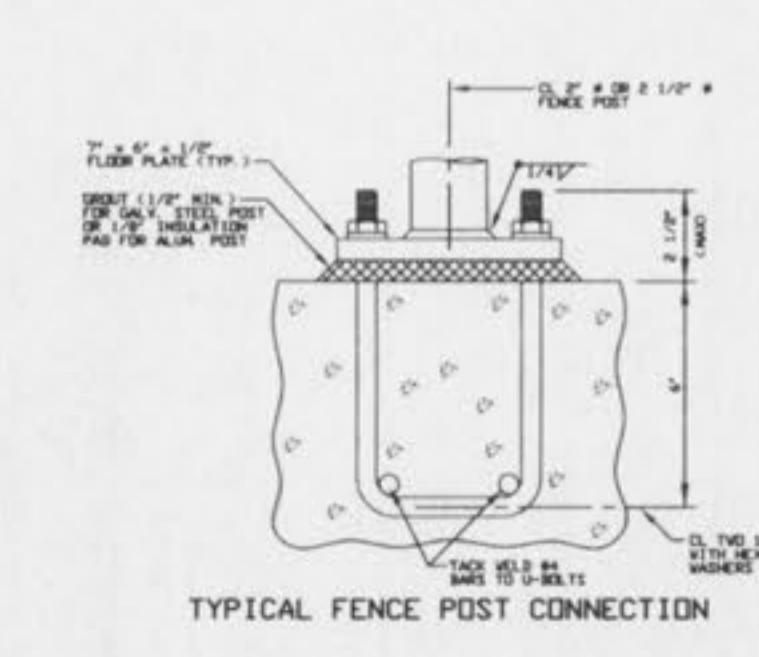
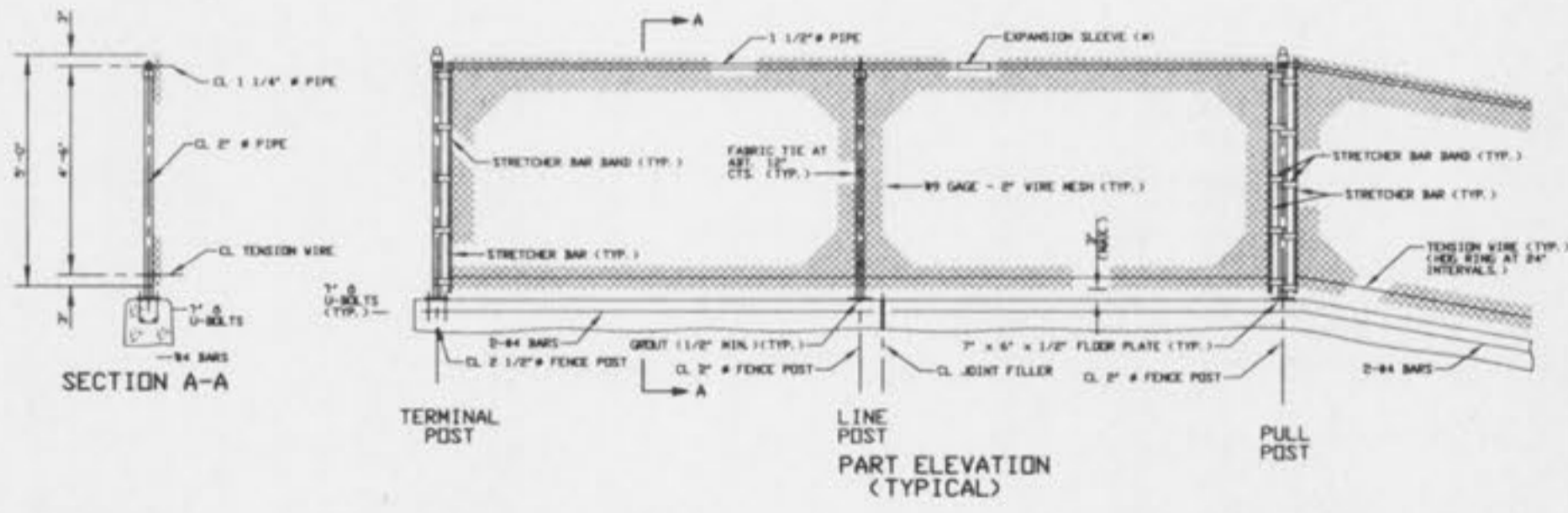
**POST TOPS**



**TYPICAL LOCATION**



**TYPICAL TRENCH DETAILS**



**GENERAL NOTES:**  
 1. PLACE EXPANSION SLEEVE AT ABOUT 30\"/>

MISSOURI HIGHWAY AND TRANSPORTATION COMMISSION	
CHAIN-LINK FENCE FOR RETAINING WALLS	
07-01-2001	607.11E 1/1

**PLAN OF FLOOR PLATE**

**TYPICAL FENCE POST CONNECTION**

ISSUE	REMARKS/DATE
1	9-06-01 FIRST SUBMITTAL
2	9-26-01 D.C.S.D. COMMENTS
3	10-05-01 D.C.S.D. & CITY COMMENTS
4	10-11-01 STORE & SANITARY APPROVAL
5	10-15-01 REVISE LATERALS PER CITY
6	10-26-01 CITY COMMENTS
7	11-26-01 CITY COMMENTS
8	12-07-01 CITY COMMENTS

PREPARED FOR:  
**N & K HIGHWAYS, L.L.C.**  
 5091 NEW BAUMGARTNER  
 ST. LOUIS, MISSOURI 63129  
 (314) 487-6717



PREPARED BY:  
**THE STERLING CO.**  
 ENGINEERS & SURVEYORS  
 5055 NEW BAUMGARTNER ROAD  
 ST. LOUIS, MISSOURI 63129  
 (314) 487-6717 FAX 487-6844  
 E-Mail: Sterling@stern-atl.net

DRAWN: DESIGNED: CHECKED:

PROJECT: **SPRING ORCHARD**  
 SHEET TITLE: **BOX CULVERT DETAILS**

No.	01 01 008
M.S.D.	SHEET
P# N/A	CD10
DIGITAL FILE LOCATION	OF