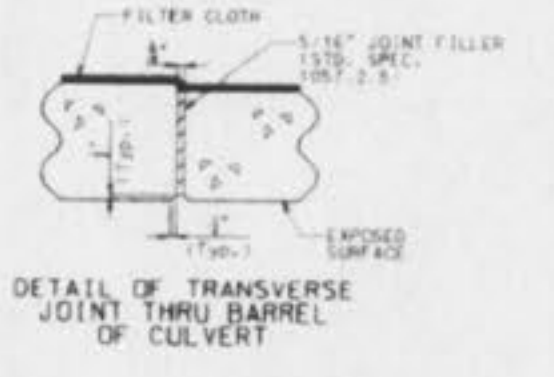
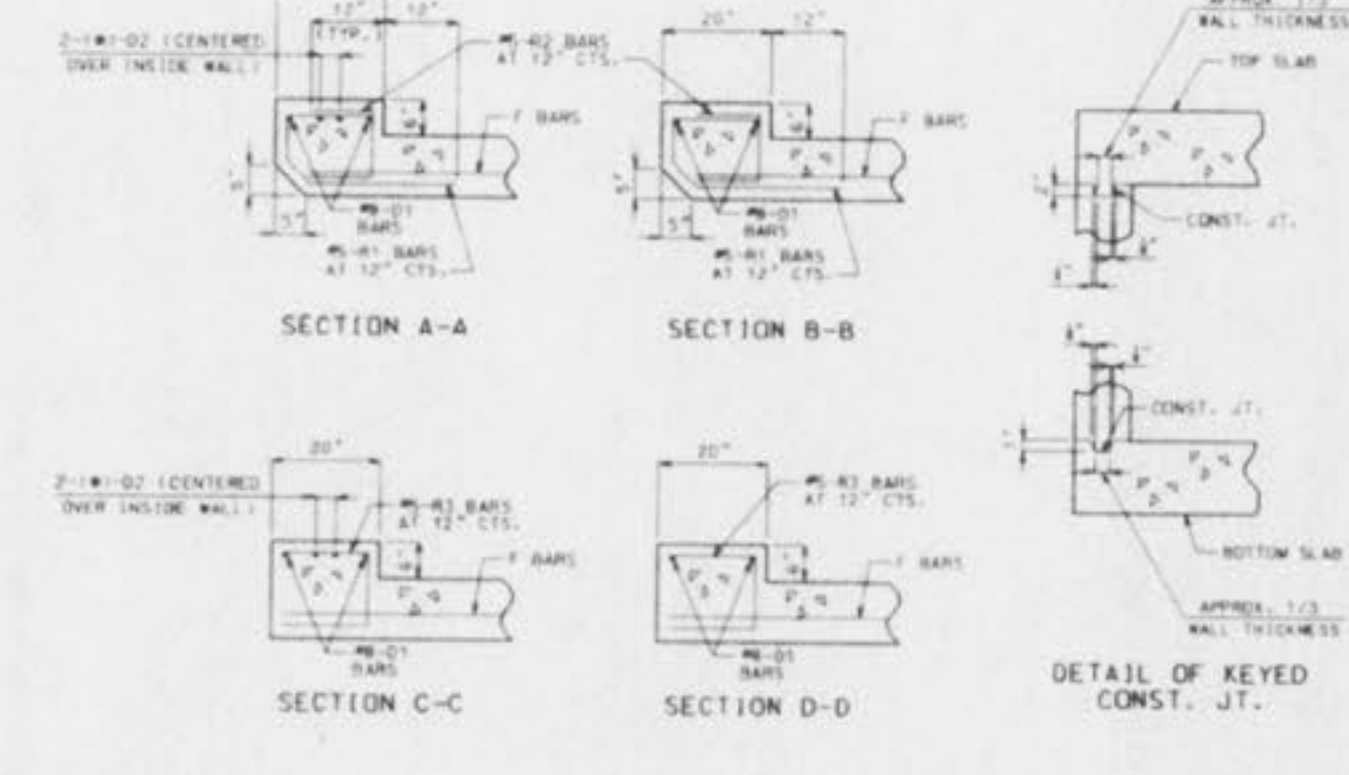
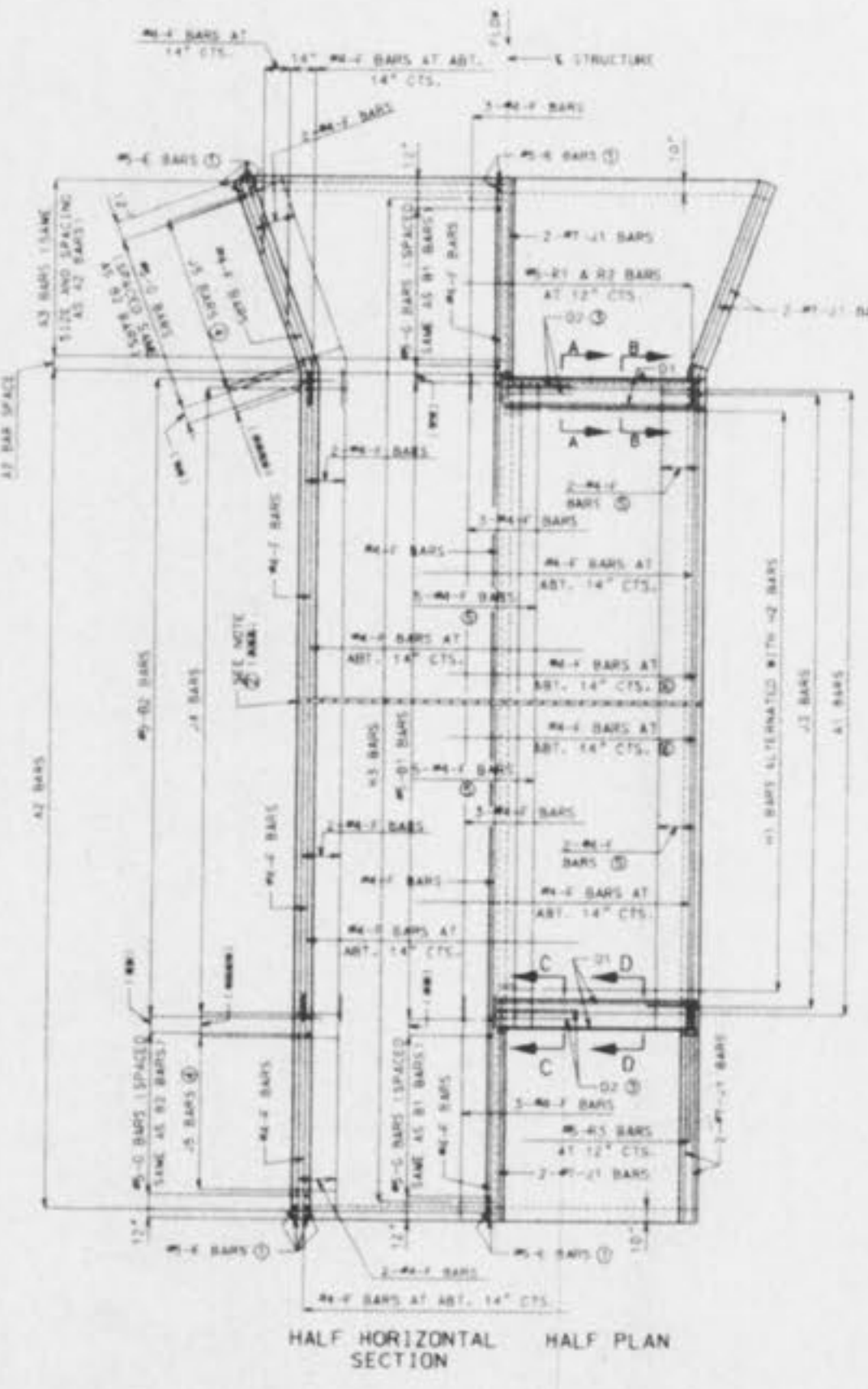


- GENERAL NOTES:**
- UPSTREAM = 3'-0" DOWNSTREAM = 4'-0"
  - IF MORE THAN ONE TRANSVERSE JOINT IS REQUIRED, SEE STANDARD SHEET 703.40C FOR DETAILS.
  - BAR LENGTH EACH SIDE OF WALLS = 48 BAR DIAMETERS OR 7'-0" CLEAR SPAN, USE GREATER.
  - FOR DETAILS AND REINFORCEMENT IN WINGS, SEE STANDARD SHEET 703.37B.
  - USE THESE BARS FOR DESIGN FILLS OF MORE THAN 3'-0".
  - USE THESE BARS FOR DESIGN FILLS OF 3'-0" OR LESS.
  - MINIMUM CLEARANCE TO REINFORCING STEEL SHALL BE 1-1/2" UNLESS OTHERWISE SHOWN.
  - FOR MORE DETAILS AND SECTION THROUGH BOX, SEE 703.40C SHEET 2 OF 2.

MISSOURI HIGHWAY AND TRANSPORTATION COMMISSION

**CONCRETE DOUBLE BOX STRUCTURE STRAIGHT WINGS (SQUARE)**

DATE: \_\_\_\_\_ SPECIFICATION: 10-00-000 703.40C 1/2

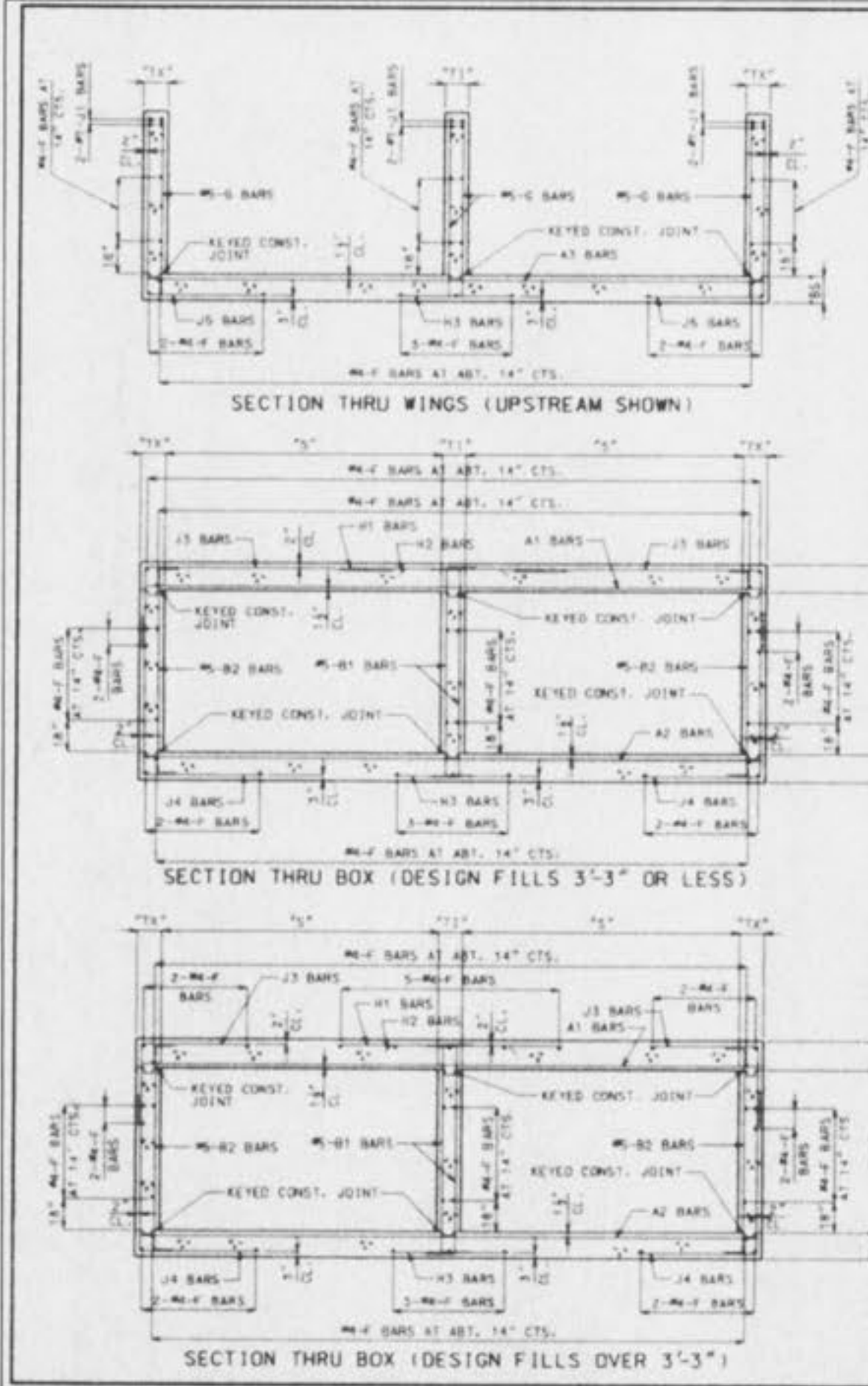
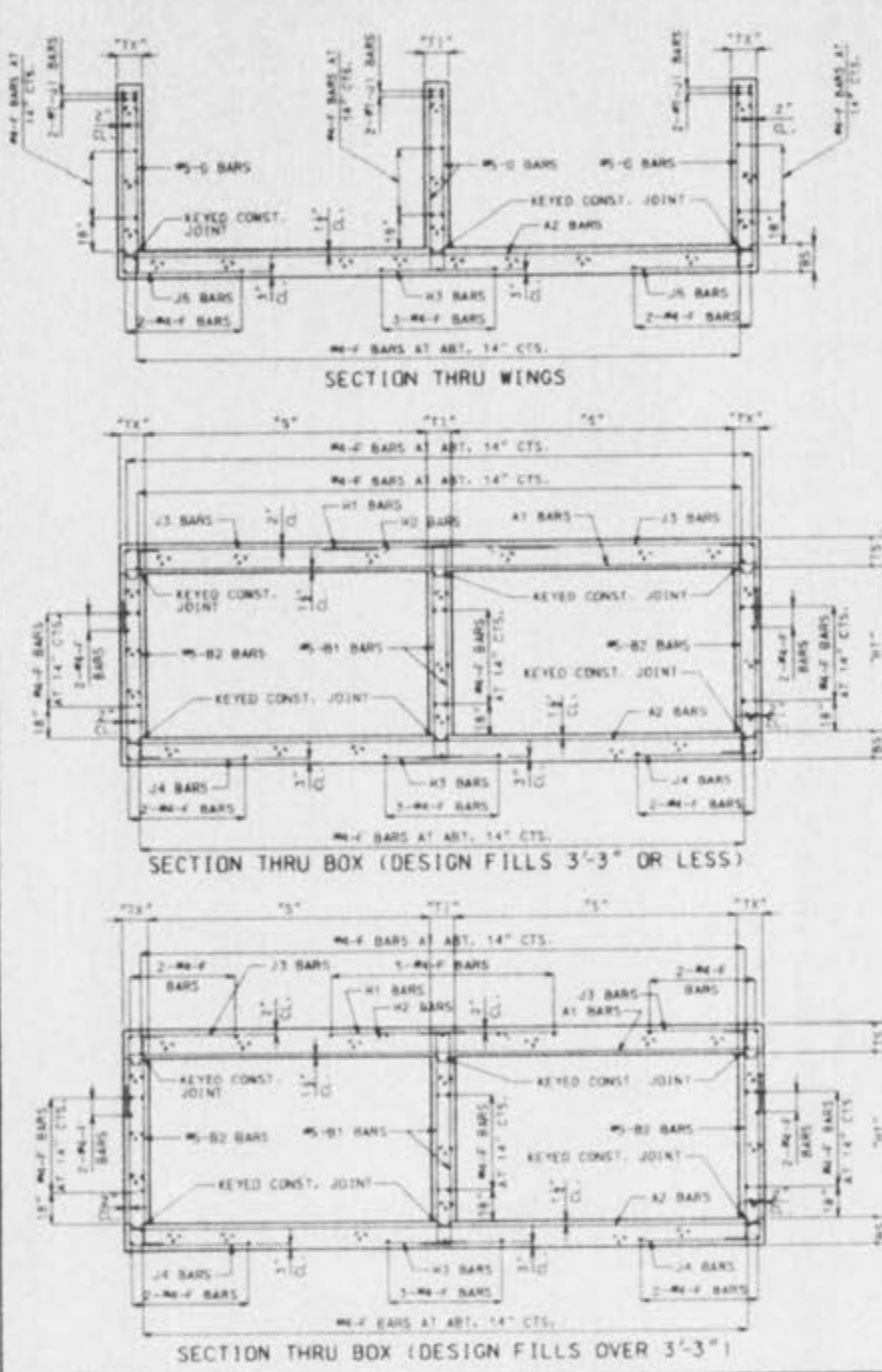


- GENERAL NOTES:**
- UPSTREAM = 3'-0" DOWNSTREAM = 4'-0"
  - IF MORE THAN ONE TRANSVERSE JOINT IS REQUIRED, SEE STANDARD SHEET 703.40C FOR DETAILS.
  - BAR LENGTH EACH SIDE OF WALLS = 48 BAR DIAMETERS OR 7'-0" CLEAR SPAN, USE GREATER.
  - FOR DETAILS AND REINFORCEMENT IN WINGS, SEE STANDARD SHEET 703.37B.
  - USE THESE BARS FOR DESIGN FILLS OF MORE THAN 3'-0".
  - USE THESE BARS FOR DESIGN FILLS OF 3'-0" OR LESS.
  - MINIMUM CLEARANCE TO REINFORCING STEEL SHALL BE 1-1/2" UNLESS OTHERWISE SHOWN.
  - FOR MORE DETAILS AND SECTION THROUGH BOX, SEE 703.41C SHEET 2 OF 2.

MISSOURI HIGHWAY AND TRANSPORTATION COMMISSION

**CONCRETE DOUBLE BOX STRUCTURE FLARED WINGS (SQUARE)**

DATE: \_\_\_\_\_ SPECIFICATION: 10-00-000 703.41C 1/2

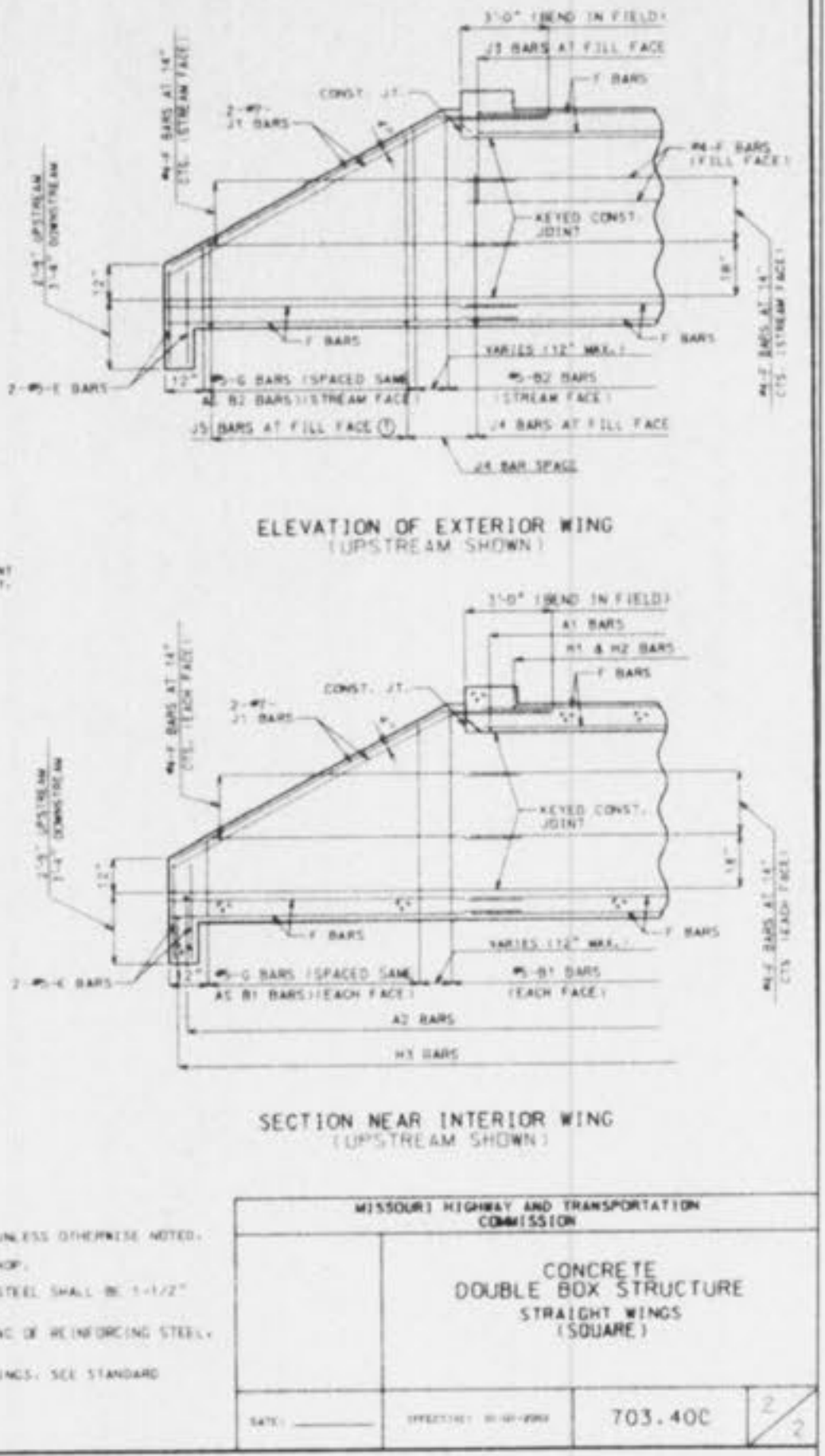


- GENERAL NOTES:**
- ALL DIMENSIONS SHOWN ARE IN INCH UNLESS OTHERWISE NOTED.
  - IF BARS MAY BE BENT IN FIELD OR SHOP.
  - MINIMUM CLEARANCE TO REINFORCING STEEL SHALL BE 1-1/2" UNLESS OTHERWISE SHOWN.
  - FOR DIMENSIONS AND SIZE AND SPACING OF REINFORCING STEEL, SEE STANDARD SHEET 703.40A.
  - FOR DETAILS OF REINFORCEMENT IN WINGS, SEE STANDARD SHEET 703.37B.

MISSOURI HIGHWAY AND TRANSPORTATION COMMISSION

**CONCRETE DOUBLE BOX STRUCTURE STRAIGHT WINGS (SQUARE)**

DATE: \_\_\_\_\_ SPECIFICATION: 10-00-000 703.40C 2/2



NOTE: CONSTRUCTION JOINT KEY OMITTED FOR CLARITY.

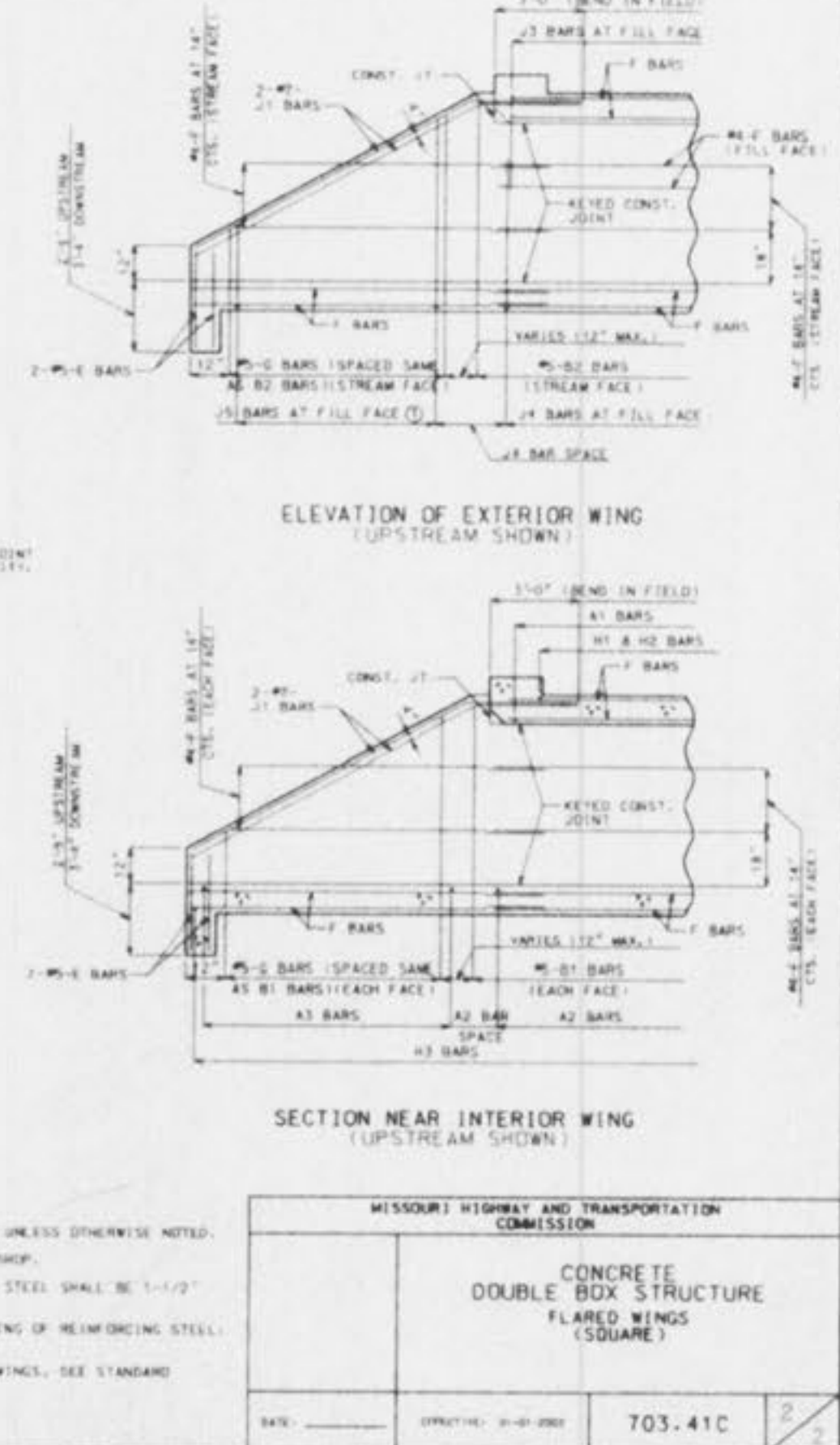
NOTE: CONSTRUCTION JOINT KEY OMITTED FOR CLARITY.

- GENERAL NOTES:**
- ALL DIMENSIONS SHOWN ARE IN INCH UNLESS OTHERWISE NOTED.
  - IF BARS MAY BE BENT IN FIELD OR SHOP.
  - MINIMUM CLEARANCE TO REINFORCING STEEL SHALL BE 1-1/2" UNLESS OTHERWISE SHOWN.
  - FOR DIMENSIONS AND SIZE AND SPACING OF REINFORCING STEEL, SEE STANDARD SHEET 703.40A.
  - FOR DETAILS OF REINFORCEMENT IN WINGS, SEE STANDARD SHEET 703.37B.

MISSOURI HIGHWAY AND TRANSPORTATION COMMISSION

**CONCRETE DOUBLE BOX STRUCTURE FLARED WINGS (SQUARE)**

DATE: \_\_\_\_\_ SPECIFICATION: 10-00-000 703.41C 2/2



NOTE: CONSTRUCTION JOINT KEY OMITTED FOR CLARITY.

NOTE: CONSTRUCTION JOINT KEY OMITTED FOR CLARITY.

THE UNDERGROUND UTILITIES SHOWN HEREON WERE PLOTTED FROM AVAILABLE INFORMATION AND DO NOT NECESSARILY REFLECT THE ACTUAL EXISTENCE, NONEXISTENCE, SIZE, TYPE, NUMBER OR LOCATION OF THESE OR OTHER UTILITIES. THE GENERAL CONTRACTOR SHALL BE RESPONSIBLE FOR VERIFYING THE ACTUAL LOCATION OF ALL UNDERGROUND UTILITIES, SHOWN OR NOT SHOWN, AND SAID UTILITIES SHALL BE LOCATED IN THE FIELD PRIOR TO ANY GRADING, EXCAVATION OR CONSTRUCTION OF IMPROVEMENTS. THESE PROVISIONS SHALL IN NO WAY ABSOLVE ANY PARTY FROM COMPLYING WITH THE UNDERGROUND FACILITY SAFETY AND DAMAGE PREVENTION ACT, CHAPTER 319, RSMo.

ISSUE	REMARKS/DATE
1	9-06-01 FIRST SUBMITTAL
2	9-26-01 D.C.S.D. COMMENTS
3	10-05-01 D.C.S.D. & CITY COMMENTS
4	10-11-01 STORM & SANITARY APPROVAL
5	10-12-01 REVISE LATERALS PER CITY
6	10-26-01 CITY COMMENTS
7	11-26-01 CITY COMMENTS

PREPARED FOR:

**N & K HIGHWAYS, L.L.C.**  
5091 NEW BAUMGARTNER  
ST. LOUIS, MISSOURI 63129  
(314) 487-6717



PREPARED BY:

**THE STERLING CO.**  
ENGINEERS & SURVEYORS  
5055 NEW BAUMGARTNER ROAD  
ST. LOUIS, MISSOURI 63129  
(314) 487-0440 FAX 487-8944  
E-Mail: Sterling@icon-stl.net

PROJECT:	SPRING ORCHARD
DRAWN:	DESIGNED:
CHECKED:	
SHEET TITLE:	BOX CULVERT DETAILS
No.	01 01 008
M.S.D.	P# N/A
SHEET	CD11
OF	