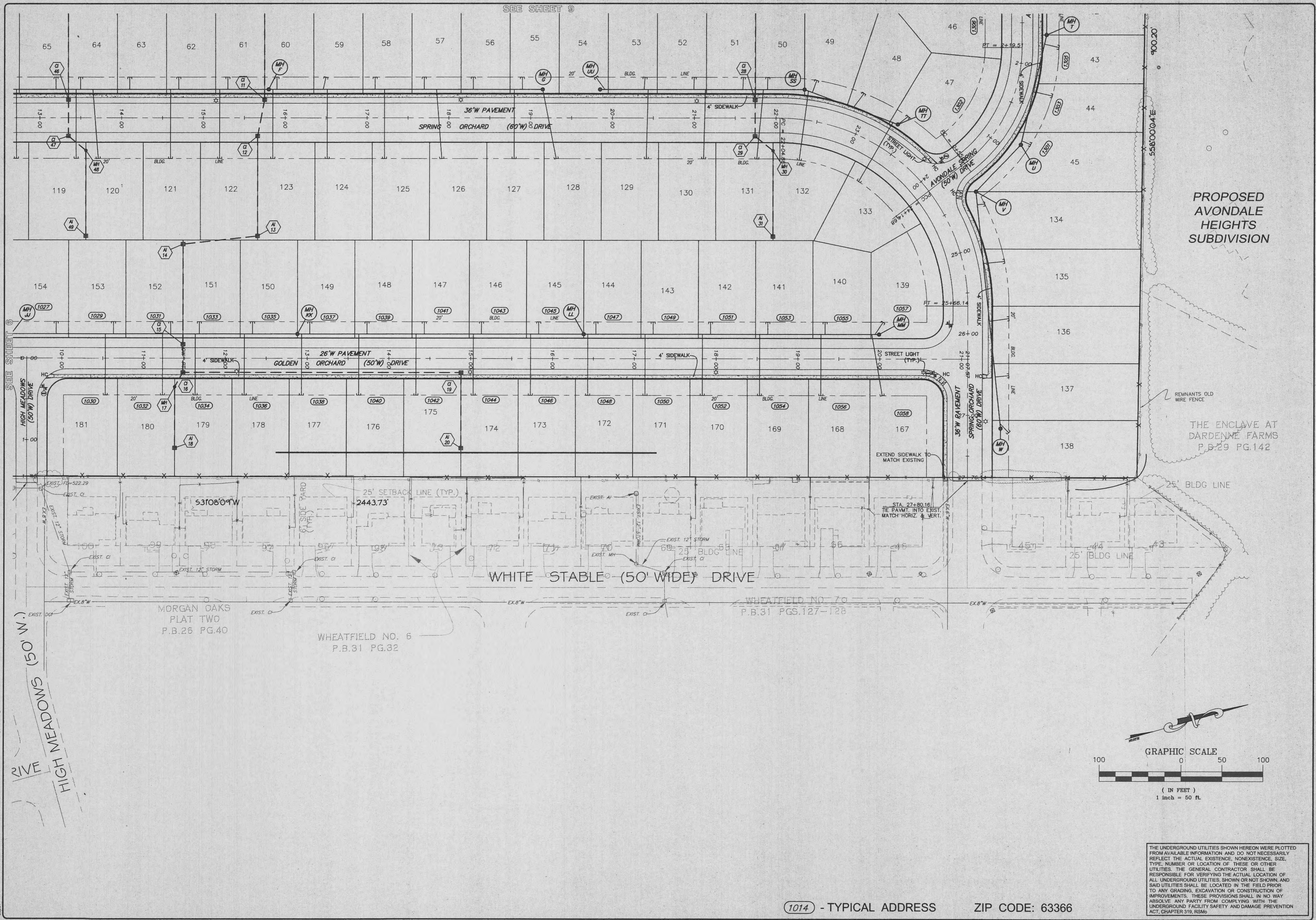


SEE SHEET 9



PROPOSED AVONDALE HEIGHTS SUBDIVISION

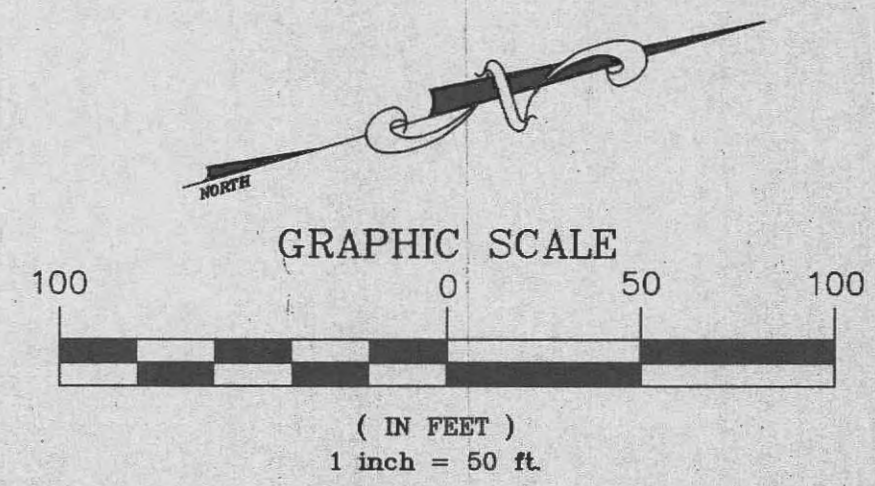
THE ENCLAVE AT DARDENNE FARMS P.B.29 PG.142

MORGAN OAKS PLAT TWO P.B.26 PG.40

WHEATFIELD NO. 6 P.B.31 PG.32

WHEATFIELD NO. 79 P.B.31 PGS.127-128

HIGH MEADOWS (50' W.) RIVE



THE UNDERGROUND UTILITIES SHOWN HEREON WERE PLOTTED FROM AVAILABLE INFORMATION AND DO NOT NECESSARILY REFLECT THE ACTUAL EXISTENCE, NONEXISTENCE, SIZE, TYPE, NUMBER OR LOCATION OF THESE OR OTHER UTILITIES. THE GENERAL CONTRACTOR SHALL BE RESPONSIBLE FOR VERIFYING THE ACTUAL LOCATION OF ALL UNDERGROUND UTILITIES, SHOWN OR NOT SHOWN, AND SAID UTILITIES SHALL BE LOCATED IN THE FIELD PRIOR TO ANY GRADING, EXCAVATION OR CONSTRUCTION OF IMPROVEMENTS. THESE PROVISIONS SHALL IN NO WAY ABSOLVE ANY PARTY FROM COMPLYING WITH THE UNDERGROUND FACILITY SAFETY AND DAMAGE PREVENTION ACT, CHAPTER 319, RSMo

1014 - TYPICAL ADDRESS ZIP CODE: 63366

ISSUE	REMARKS/DATE
1	9/06/01 FIRST SUBMITTAL
2	9/26/01 REVISIONS PER D.C.S.D.
3	10/05/01 D.C.S.D. & CITY COMMENTS
4	10/11/01 STORM & SANITARY APPROVAL
5	10/12/01 REVISE LATERALS PER CITY

PREPARED FOR:  
**N & K HIGHWAYS, L.L.C.**  
 5091 NEW BAUMGARTNER  
 ST. LOUIS, MISSOURI 63129  
 (314) 487-6717



PREPARED BY:  
**THE STERLING CO.**  
 ENGINEERS & SURVEYORS  
 5065 NEW BAUMGARTNER ROAD  
 ST. LOUIS, MISSOURI 63129  
 (314) 487-6717 FAX: 487-6944  
 E-Mail: Sterling@sterling-eng-sur.com

PROJECT: **SPRING ORCHARD** SHEET TITLE: **SITE PLAN**

DRAWN: **GS** DESIGNED: **JCM** CHECKED:

NO. <b>01</b>	01	008
M.S.D.		SHEET
P#	<b>7</b>	
DIGITAL FILE LOCATION: <b>SPRING-STERLING-2</b>		
		OF <b>29</b>

BASE MAP

K:\D\10101008 LOEFFLER IMPROVEMENT PLANS\1008sp2.dwg 08/29/01 10:05:09 AM