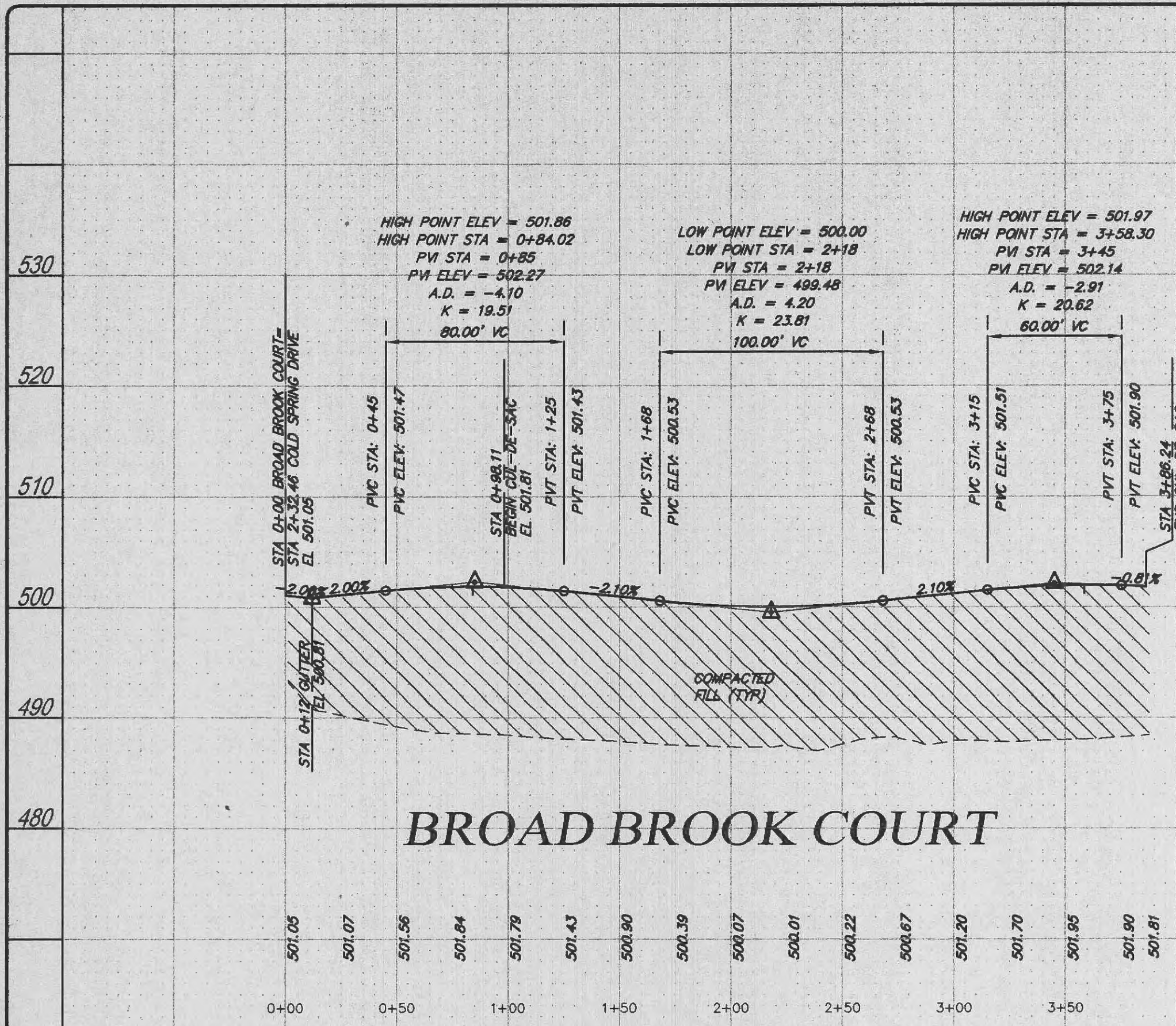
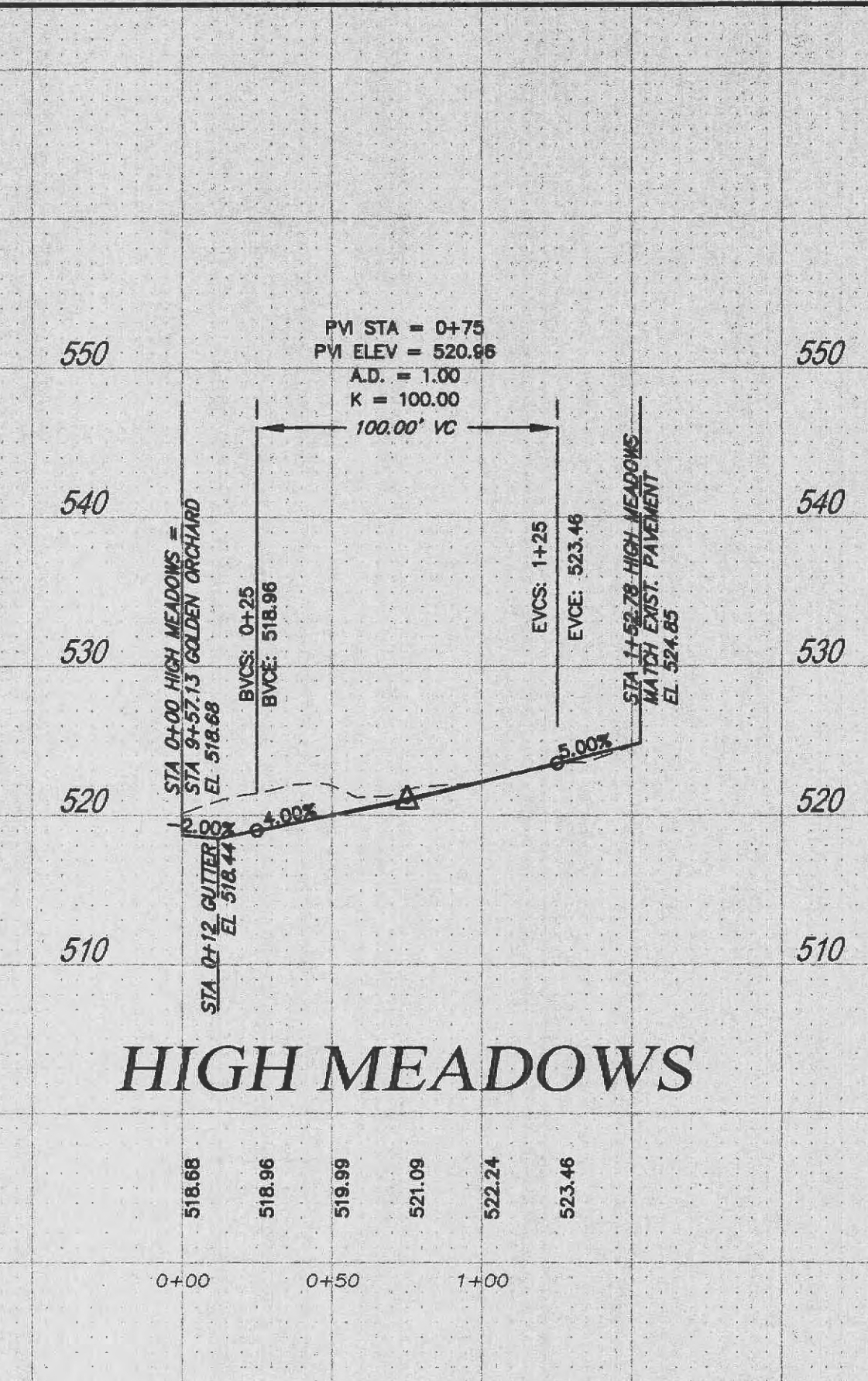


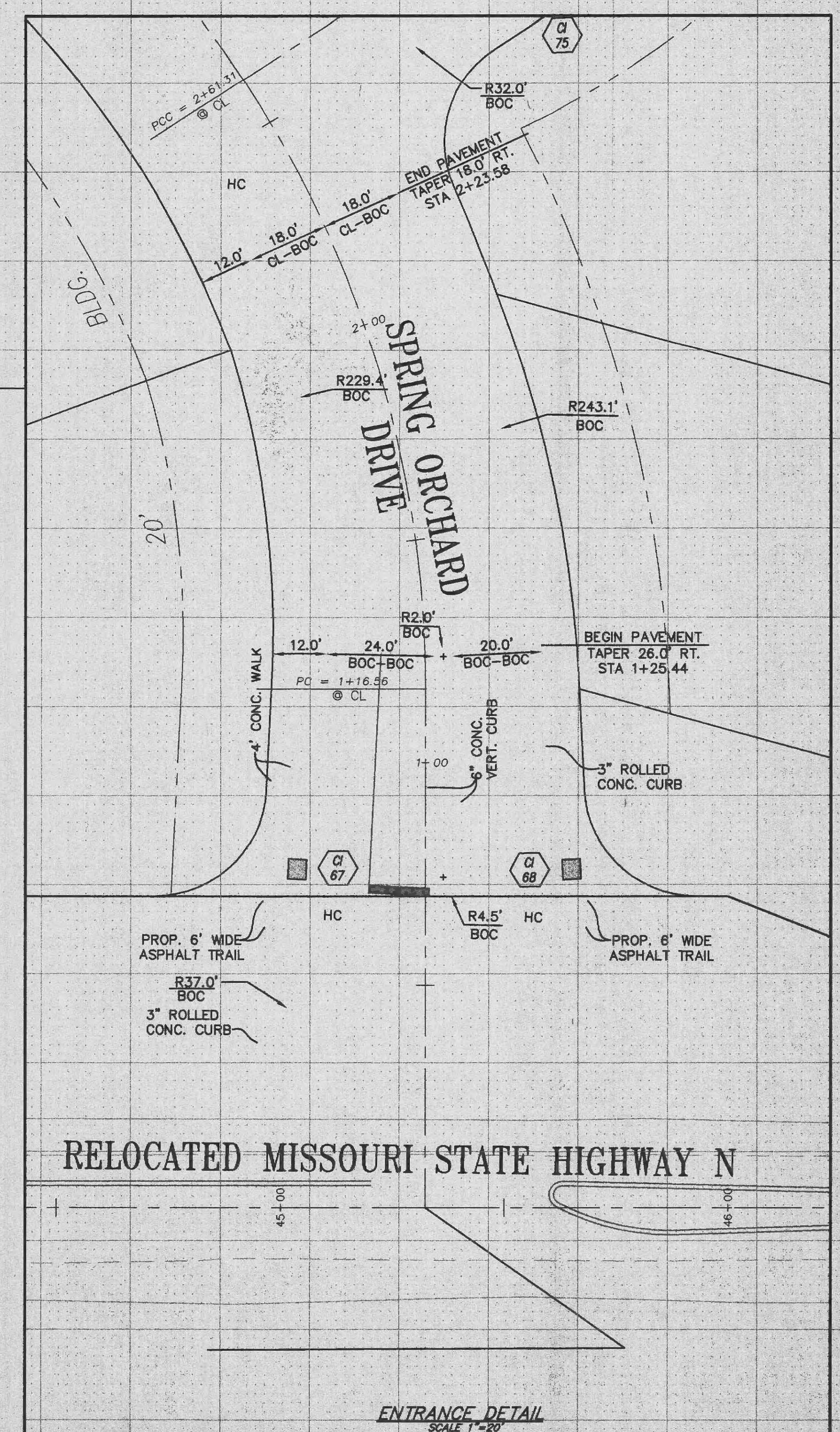
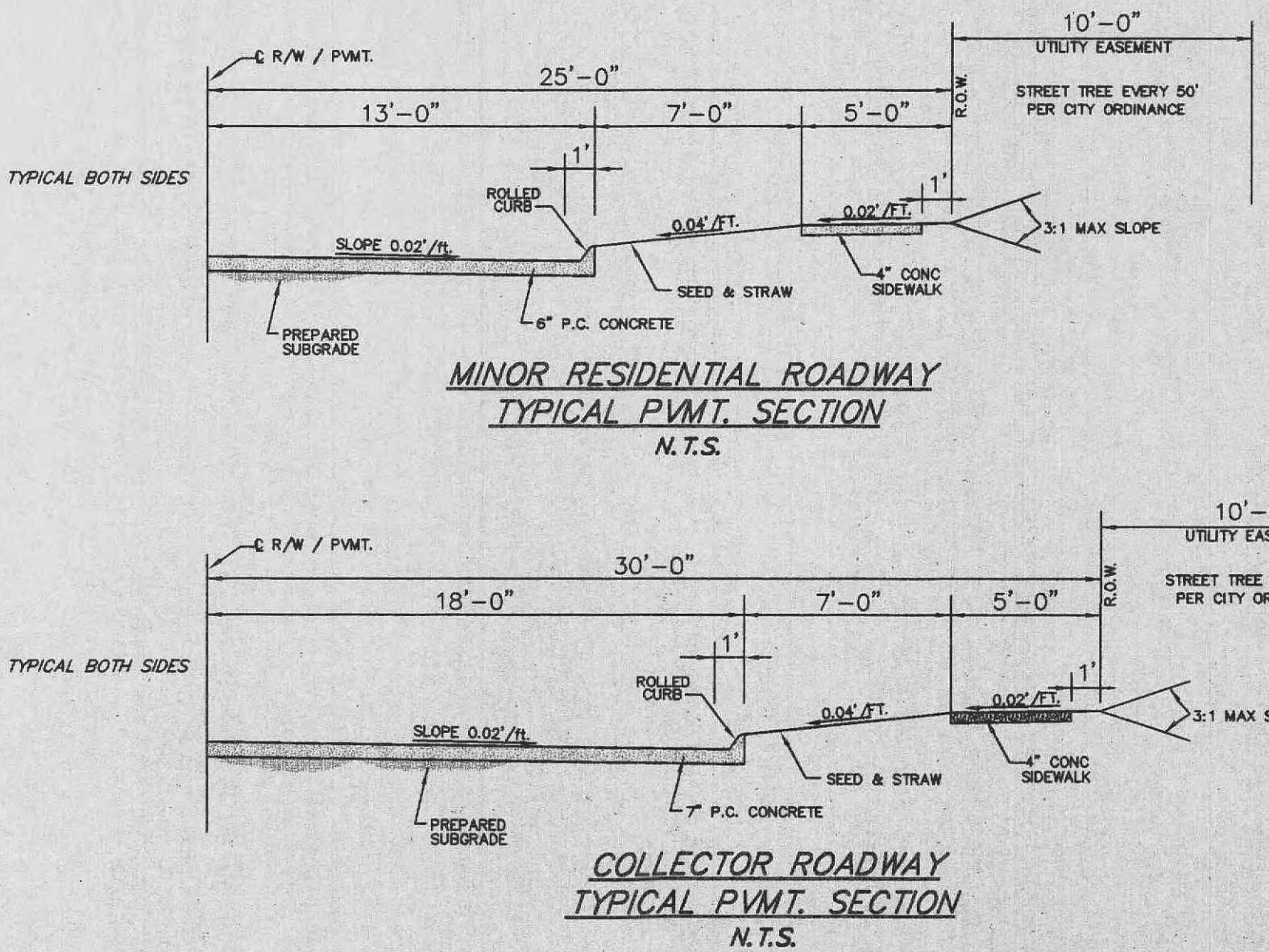
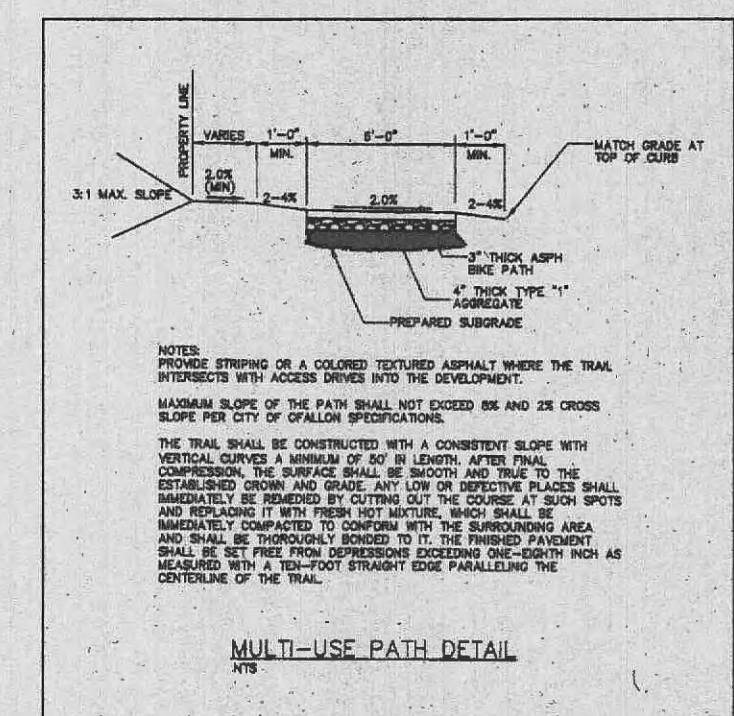
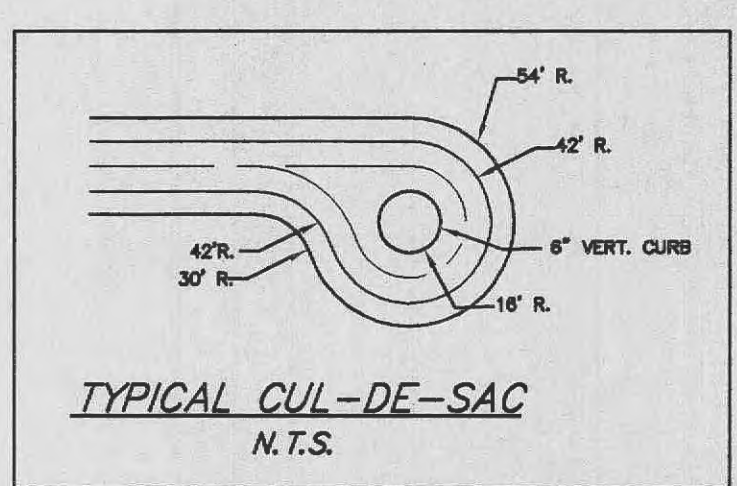
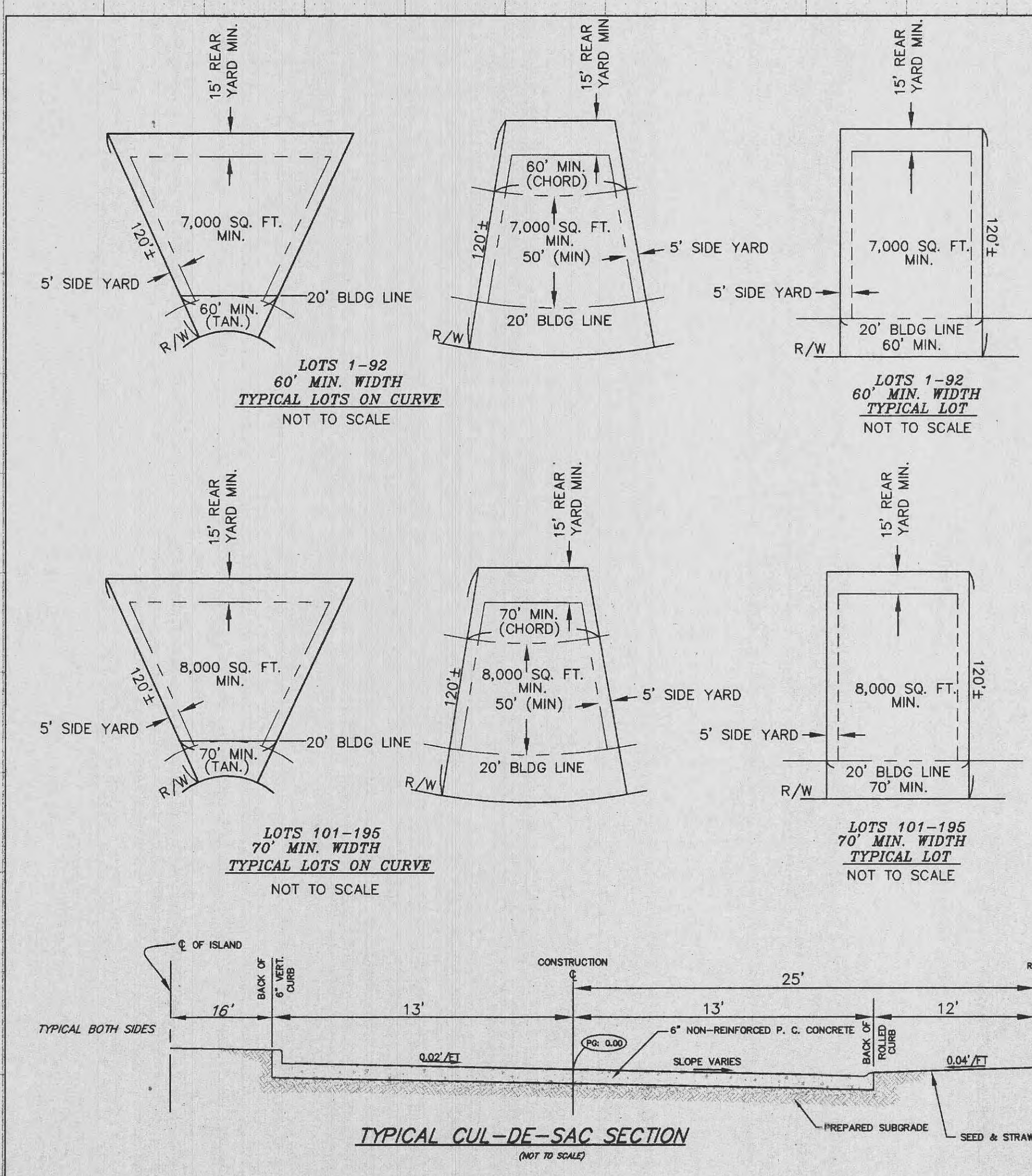
K:\D\0101008 LDEFLEER IMPROVEMENT PLANS\1009STR3WG 10/16/01 10:34:15 AM GDI



### BROAD BROOK COURT



### HIGH MEADOWS



### RELOCATED MISSOURI STATE HIGHWAY N

**ENTRANCE DETAIL  
SCALE 1"=20'**

ISSUE	REMARKS/DATE
1	9-06-01 FIRST SUBMITTAL
2	9-26-01 D.C.S.D. COMMENTS
3	10-05-01 D.C.S.D. & CITY COMMENTS
4	10-12-01 INHOUSE REVIEW

PREPARED BY:  
**N & K HIGHWAYS, L.L.C.**  
 5091 NEW BAUMGARTNER ROAD  
 ST. LOUIS, MISSOURI 63129  
 (314) 487-6717

THE **STERLING** CO.  
 ENGINEERS & SURVEYORS  
 5055 NEW BAUMGARTNER ROAD  
 ST. LOUIS, MISSOURI 63129  
 (314) 487-0440 FAX 487-8944  
 (E-Mail: Sterling@sterling-eng-sur.com)

PROJECT: **SPRING ORCHARD**  
 DESIGNED: \_\_\_\_\_  
 CHECKED: \_\_\_\_\_  
 DRAWN: \_\_\_\_\_  
 SHEET TITLE: **STREET PROFILES & DETAILS**

NO.	01	01	008
M.S.D.			SHEET
P# N/A		13	
DIGITAL FILE LOCATION			
SERVER:STERLING2			
FILE:1009STR3WG			
DATE:10/16/01			
OF			29