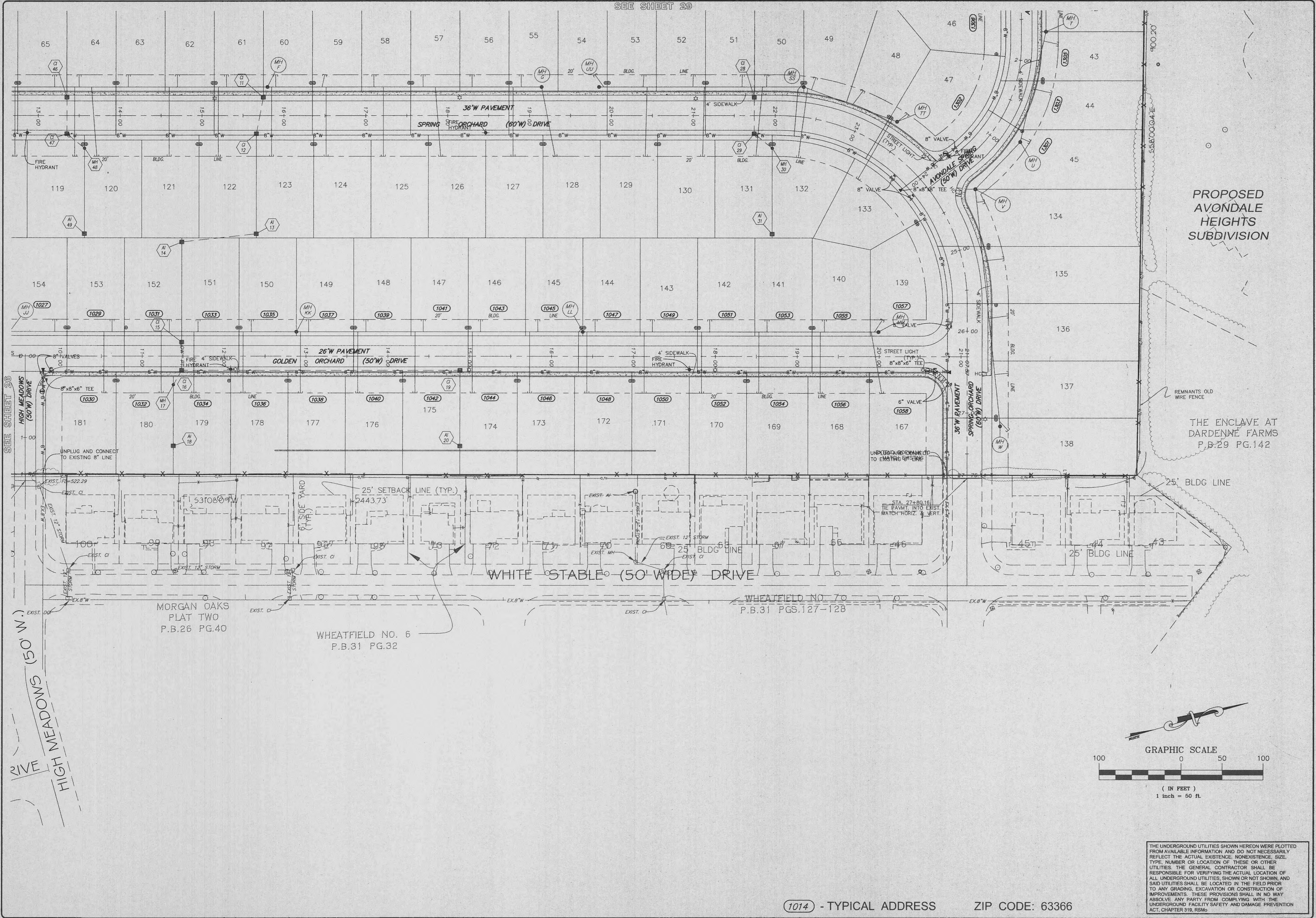


SEE SHEET 29



PROPOSED AVONDALE HEIGHTS SUBDIVISION

THE ENCLAVE AT DARDENNE FARMS P.B.29 PG.142

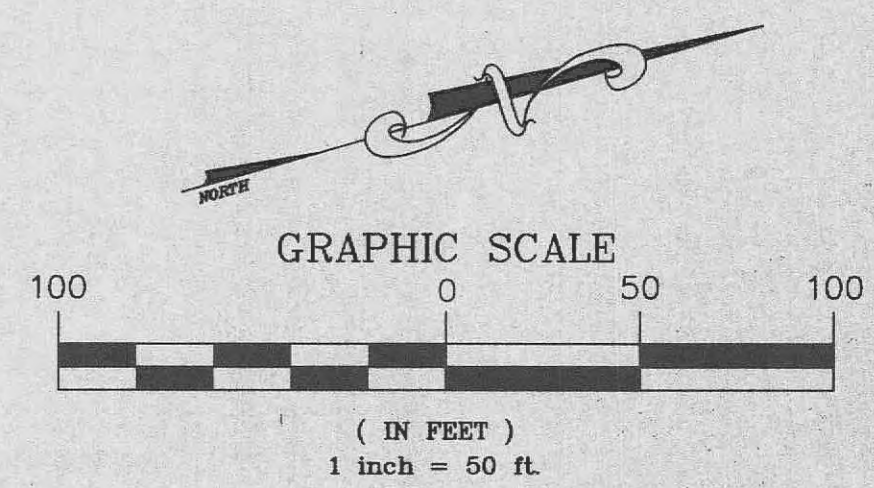
MORGAN OAKS PLAT TWO P.B.26 PG.40

WHEATFIELD NO. 6 P.B.31 PG.32

WHEATFIELD NO. 70 P.B.31 PGS.127-128

SEE SHEET 28

HIGH MEADOWS (50' W.) DRIVE



THE UNDERGROUND UTILITIES SHOWN HEREON WERE PLOTTED FROM AVAILABLE INFORMATION AND DO NOT NECESSARILY REFLECT THE ACTUAL EXISTENCE, SIZE, TYPE, NUMBER OR LOCATION OF THESE OR OTHER UTILITIES. THE GENERAL CONTRACTOR SHALL BE RESPONSIBLE FOR VERIFYING THE ACTUAL LOCATION OF ALL UNDERGROUND UTILITIES, SHOWN OR NOT SHOWN, AND SAID UTILITIES SHALL BE LOCATED IN THE FIELD PRIOR TO ANY GRADING, EXCAVATION OR CONSTRUCTION OF IMPROVEMENTS. THESE PROVISIONS SHALL IN NO WAY ABSOLVE ANY PARTY FROM COMPLYING WITH THE UNDERGROUND FACILITY SAFETY AND DAMAGE PREVENTION ACT, CHAPTER 318, RSMo.

ISSUE	REMARKS/DATE
1	9/06/01 FIRST SUBMITTAL
2	9/26/01 REVISIONS PERD C.S.D.
3	10/05/01 D.C.S.D. & CITY COMMENTS
4	10/11/01 STORM & SANITARY APPROVAL
5	10/12/01 REVISE LATERALS PER CITY

PREPARED FOR:
N & K HIGHWAYS, L.L.C.
 5091 NEW BAUMGARTNER
 ST. LOUIS, MISSOURI 63129
 (314) 487-6717



PREPARED BY:
THE STERLING CO.
 ENGINEERS & SURVEYORS
 5055 NEW BAUMGARTNER ROAD
 ST. LOUIS, MISSOURI 63129
 (314) 487-6717
 E-Mail: Sterling@sterling-eng-survey.com

PROJECT: **SPRING ORCHARD**
 SHEET TITLE: **WATER PLAN**

NO.	01	01	008
M.S.D.			SHEET
P#		27	
DIGITAL FILE LOCATION	SERVER:STERLING-2		
DATE	10/26/01		
			OF 29

1014 - TYPICAL ADDRESS ZIP CODE: 63366

BASE MAP

K:\D:\0101008 LDEFFLER\IMPROVEMENT PLANS\1008sgp2.dwg 08/29/01 10:06:09 AM