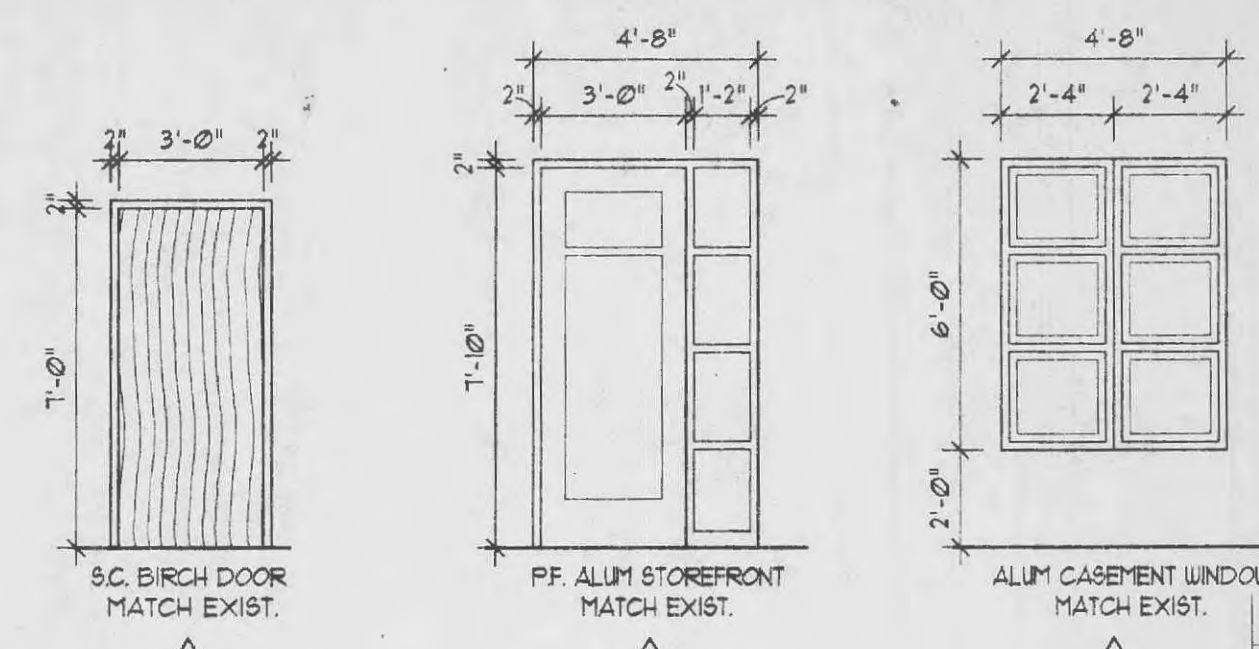


4 PARTITION TYPE
A-1 | A-1 SCALE: 1" = 1'-0"



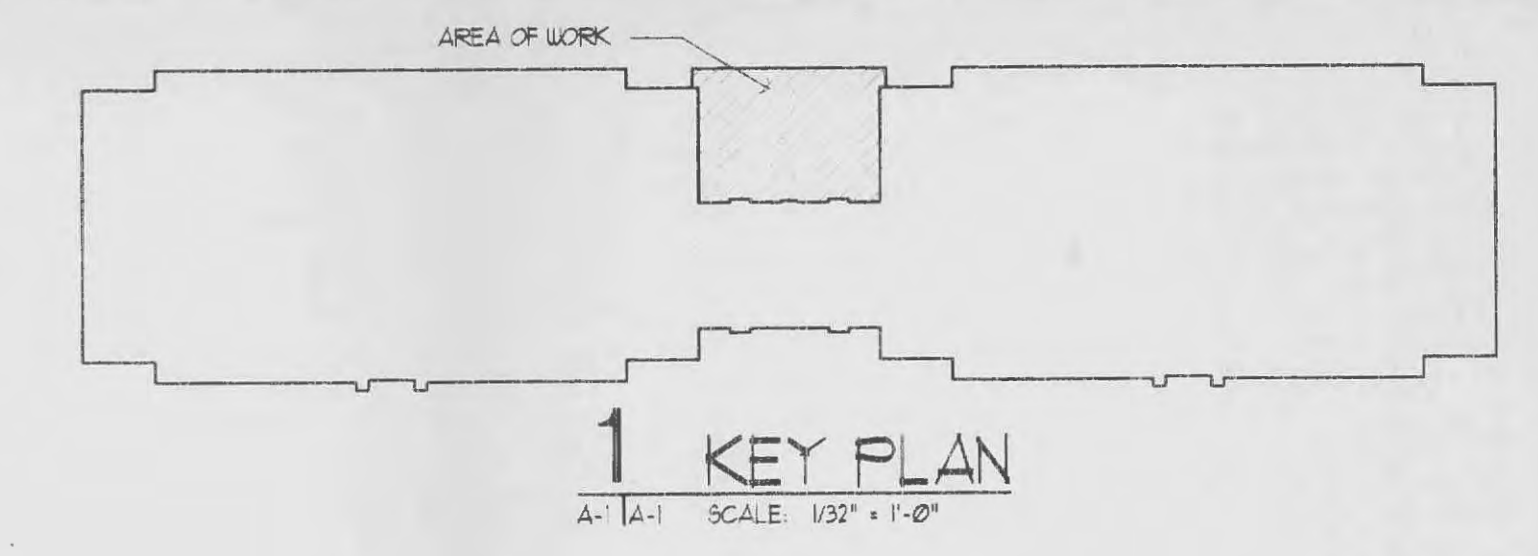
5 DOOR & WINDOW TYPES
A-1 | A-1 SCALE: 1/4" = 1'-0"

NOTE: THIS DRAWING REFLECTS EXISTING CONDITIONS TO THE BEST OF THE ARCHITECT'S KNOWLEDGE AND ARE FOR EXHIBIT PURPOSES ONLY. ALL DIMENSIONS ARE TO BE VERIFIED FOR ACCURACY.

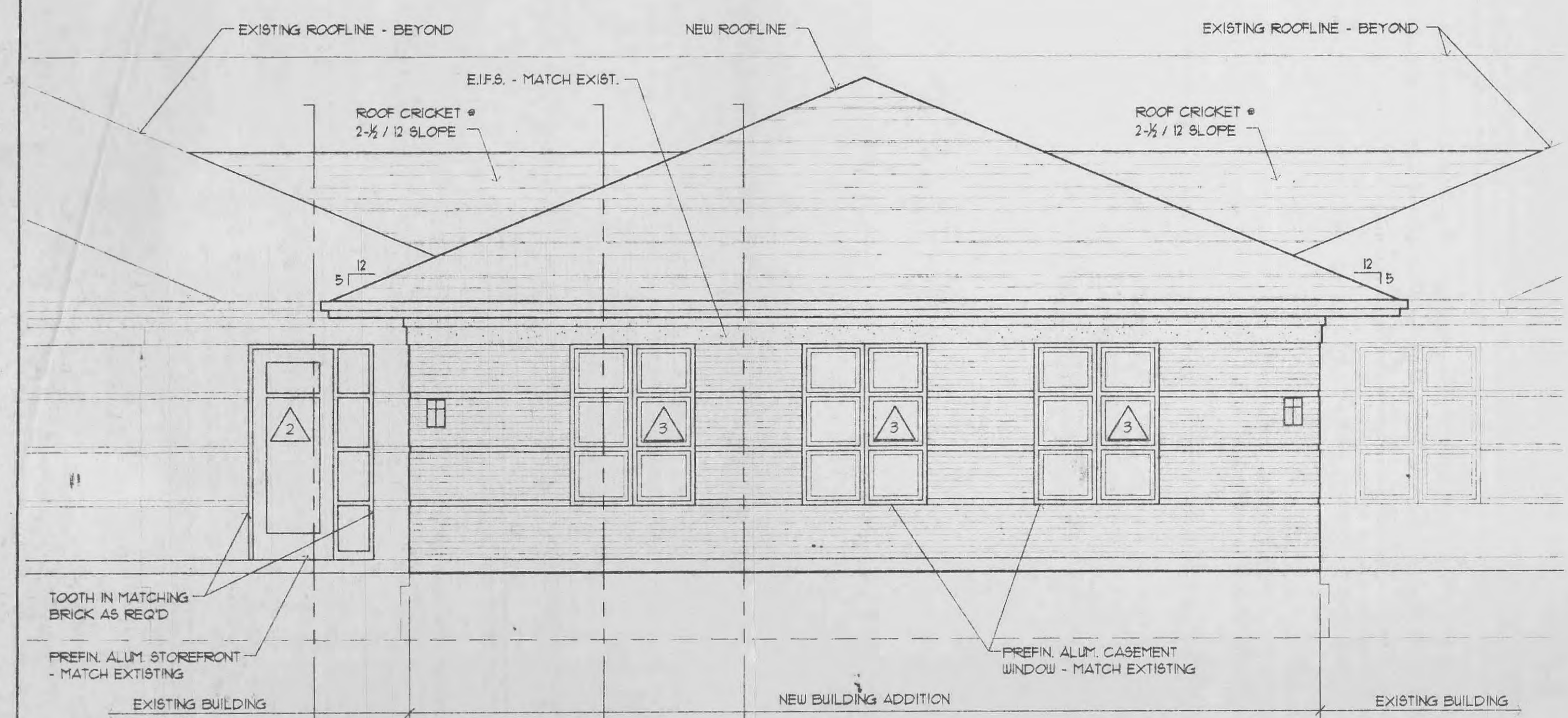
NOTE: NEW CONSTRUCTION IS TO COORDINATE TO MATCH EXISTING CONSTRUCTION AND BUILDING CONDITIONS.

WALL LEGEND

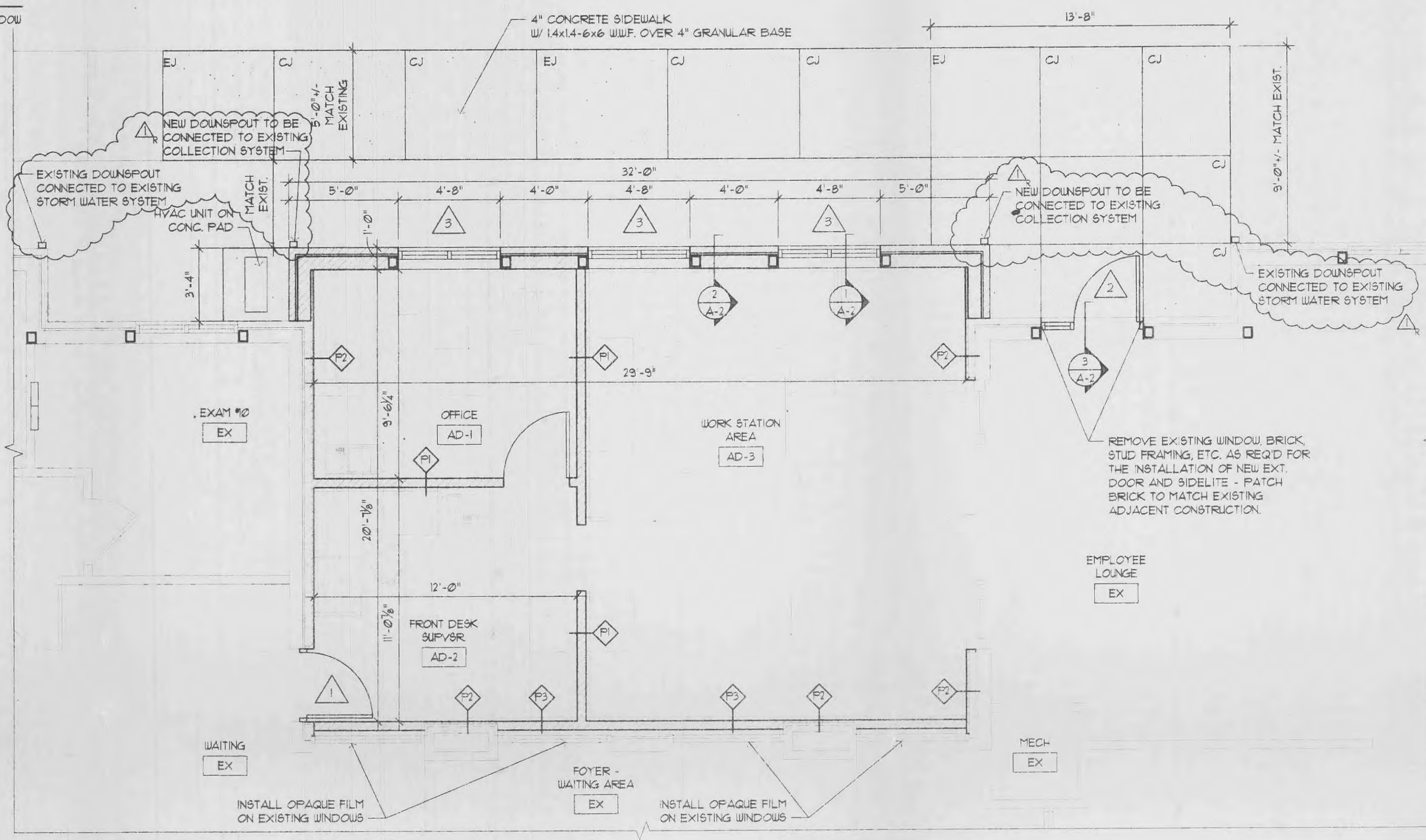
- NEW WALL CONSTRUCTION
- EXISTING CONSTRUCTION



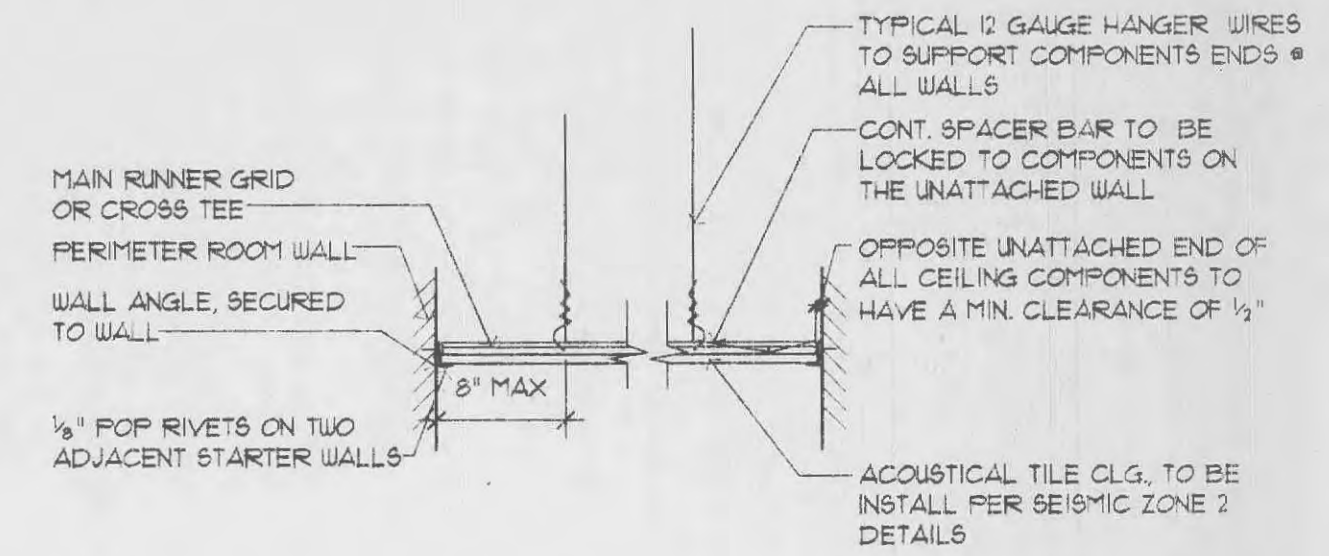
1 KEY PLAN
A-1 | A-1 SCALE: 1/32" = 1'-0"



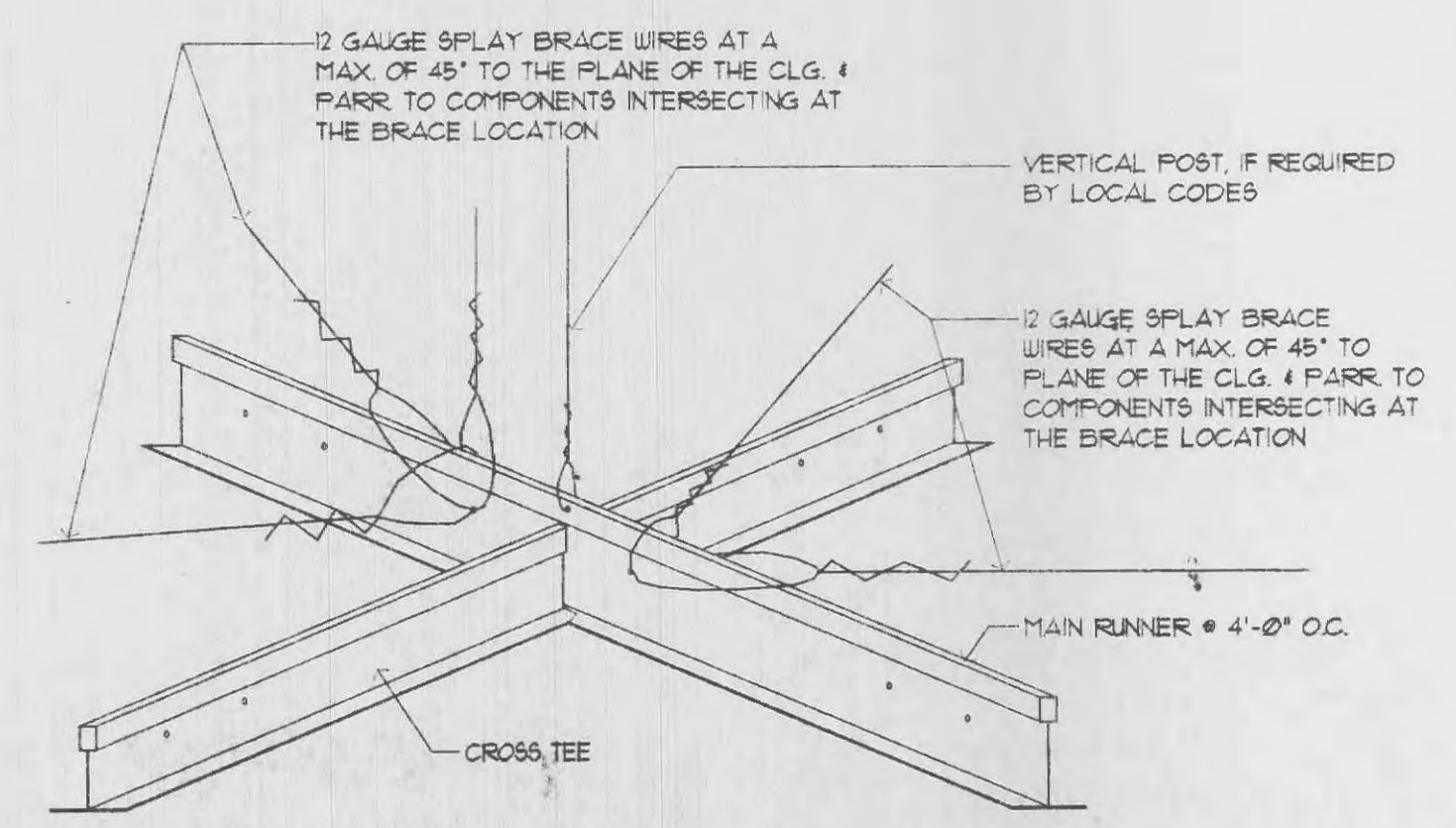
6 SOUTH ELEVATION
A-1 | A-2 SCALE: 1/4" = 1'-0"



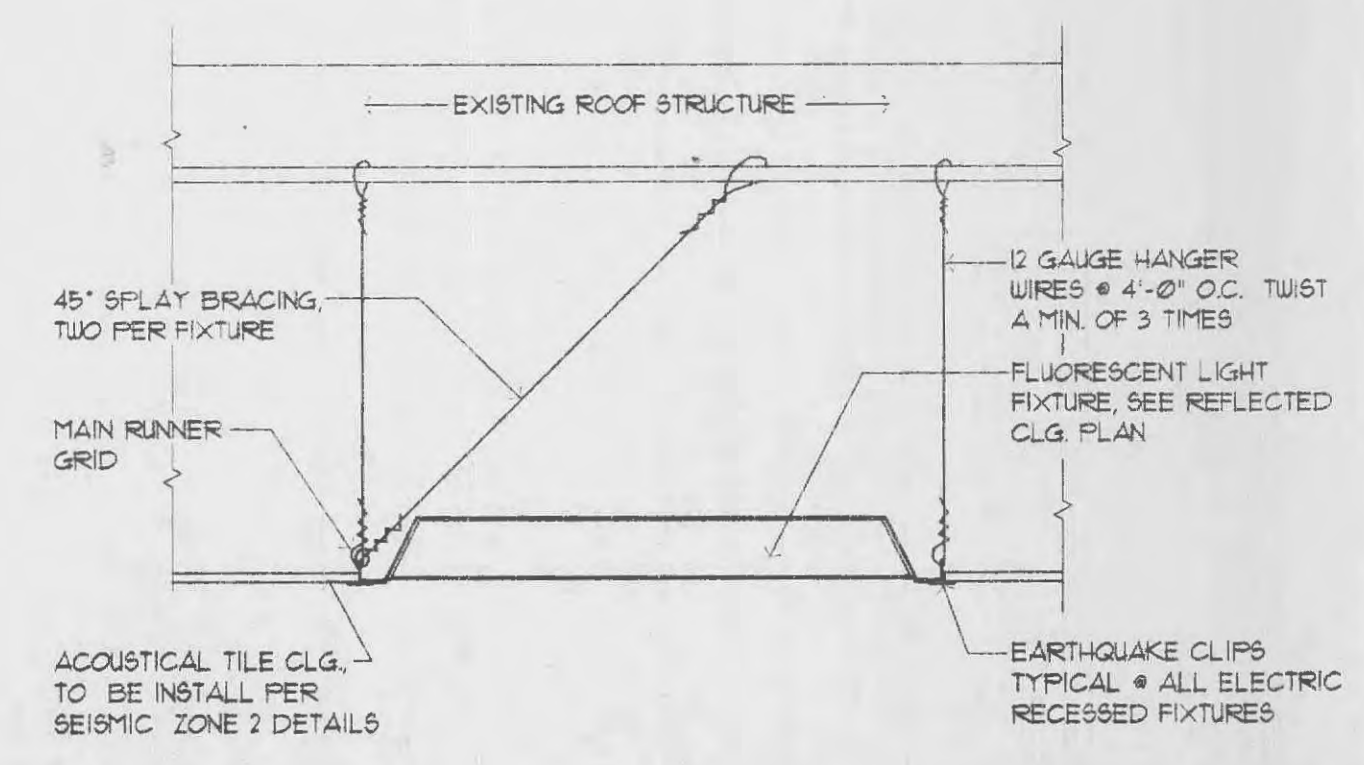
2 FLOOR PLAN
A-1 | A-1 SCALE: 1/4" = 1'-0"



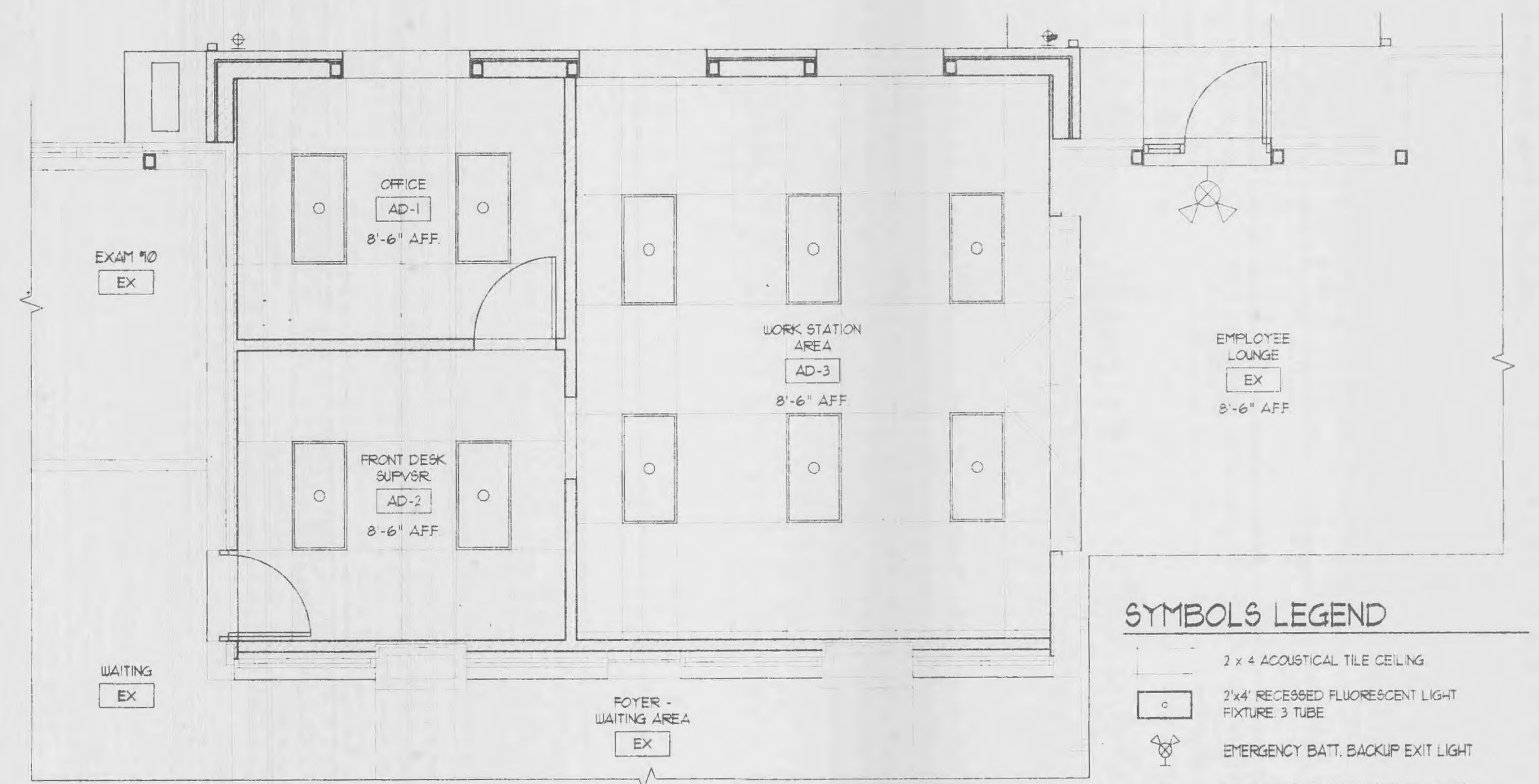
7 SUSP. CLG. INSTALLATION DETAIL
A-1 | A-1 SCALE: NONE PER SEISMIC ZONE 2



8 TYPICAL CLG. BRACING DETAIL
A-1 | A-1 SCALE: NONE PER SEISMIC ZONE 2



9 REC. LIGHT FIXTURE ANCHORAGE DETAIL
A-1 | A-1 SCALE: NONE



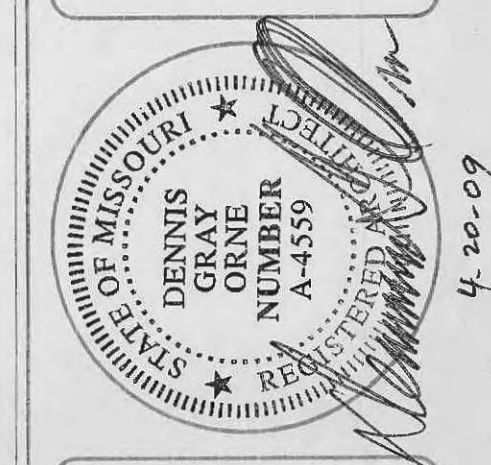
3 REFLECTED CEILING PLAN
A-1 | A-1 SCALE: 1/4" = 1'-0"

SYMBOLS LEGEND

- 2 x 4 ACOUSTICAL TILE CEILING
- 2x4 RECESSED FLUORESCENT LIGHT FIXTURE 3 TUBE
- ⊕ EMERGENCY BATT. BACKUP EXIT LIGHT
- ⊕ INCANDESCENT EXTERIOR WALL SCONCE, 54633-AR-LAMP BY PK-2055B-DK BRZ-SAND COLOR OR FAUX ALABASTER GLASS

M/E ENGINEER
FACILITY ENGINEERING
SERVICES LLC
13067 WINDING TRAIL LANE
ST. LOUIS, MO 63131
CONTACT: JACK HOPSON
PHONE: (314) 821-1339
FAX: (314) 822-9736

LEPIQUE & ORNE ARCHITECTS, INC.
ESTABLISHED 1916
701 N. FIFTH STREET, SAINT CHARLES, MO 63501
PHONE (636) 947-0099 FAX (636) 947-8700



A NEW BUILDING ADDITION FOR: ST. CHARLES ORTHOPAEDIC
Surgery Associates, Inc.
PHOENIX VILLAGE OFFICE PARK
AT WINGHAVEN PARKWAY
PHOENIX VILLAGE PARKWAY
OFALLON, MISSOURI 63366
BUILDING #4

DATE	ISSUE
2-13-09	OWNER'S REVIEW
3-24-09	PERMIT/GRID ISSUE
4-15-09	CODE RESPONSE

PROJECT MANAGER: M.J.B.
DRAWN BY: J.G.B.
PROJECT NUMBER: 09-003
DATE: FEBRUARY 13, 2009

SHEET
A-1
FLOOR PLAN,
PARTITION
TYPES & DET