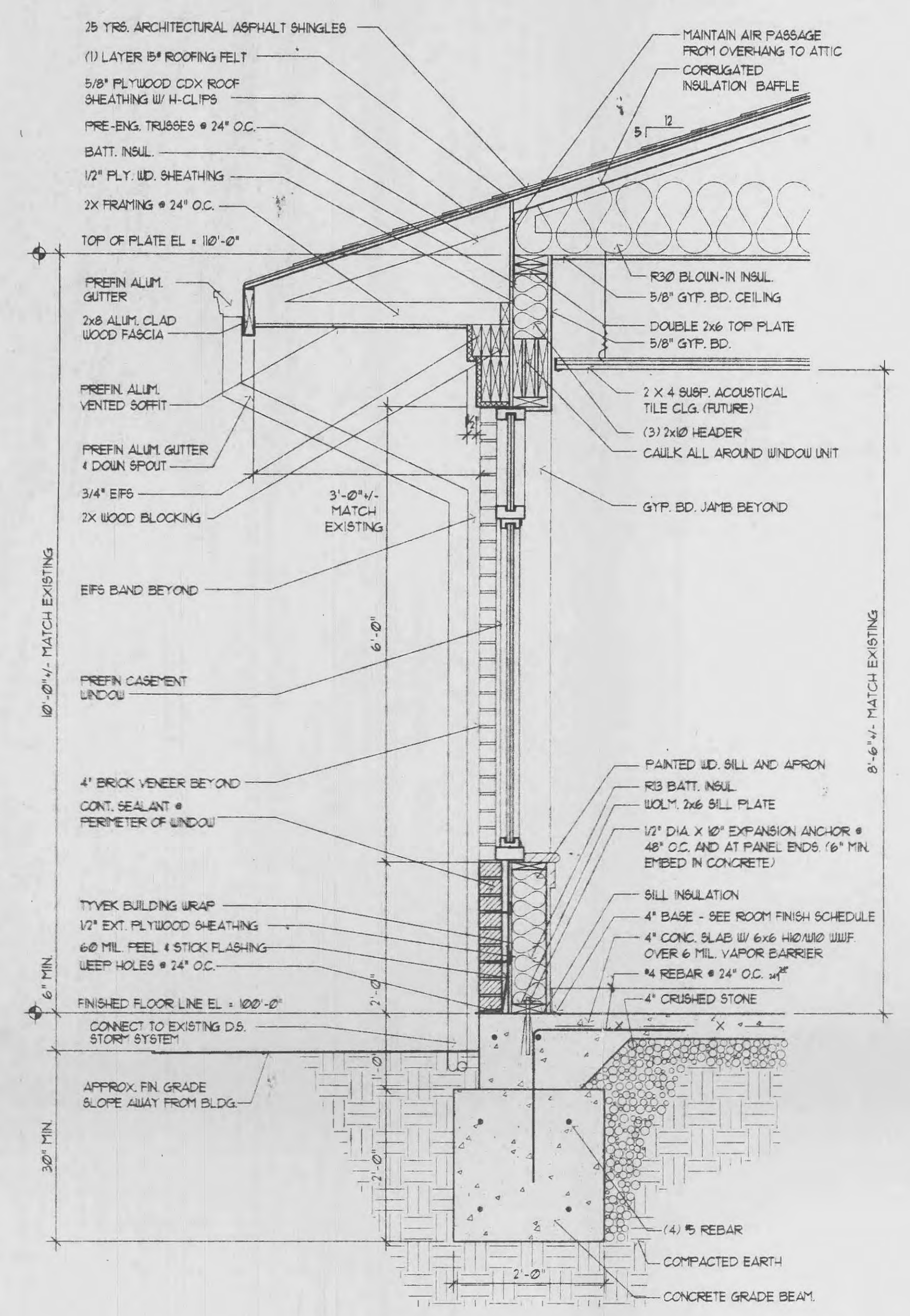


A NEW BUILDING ADDITION FOR:  
**ST. CHARLES ORTHOPAEDIC**  
 Surgery Associates, Inc.  
 PHOENIX VILLAGE OFFICE PARK  
 AT WINGHAVEN  
 PHOENIX VILLAGE PARKWAY  
 O'FALLON, MISSOURI 63366 BUILDING #4

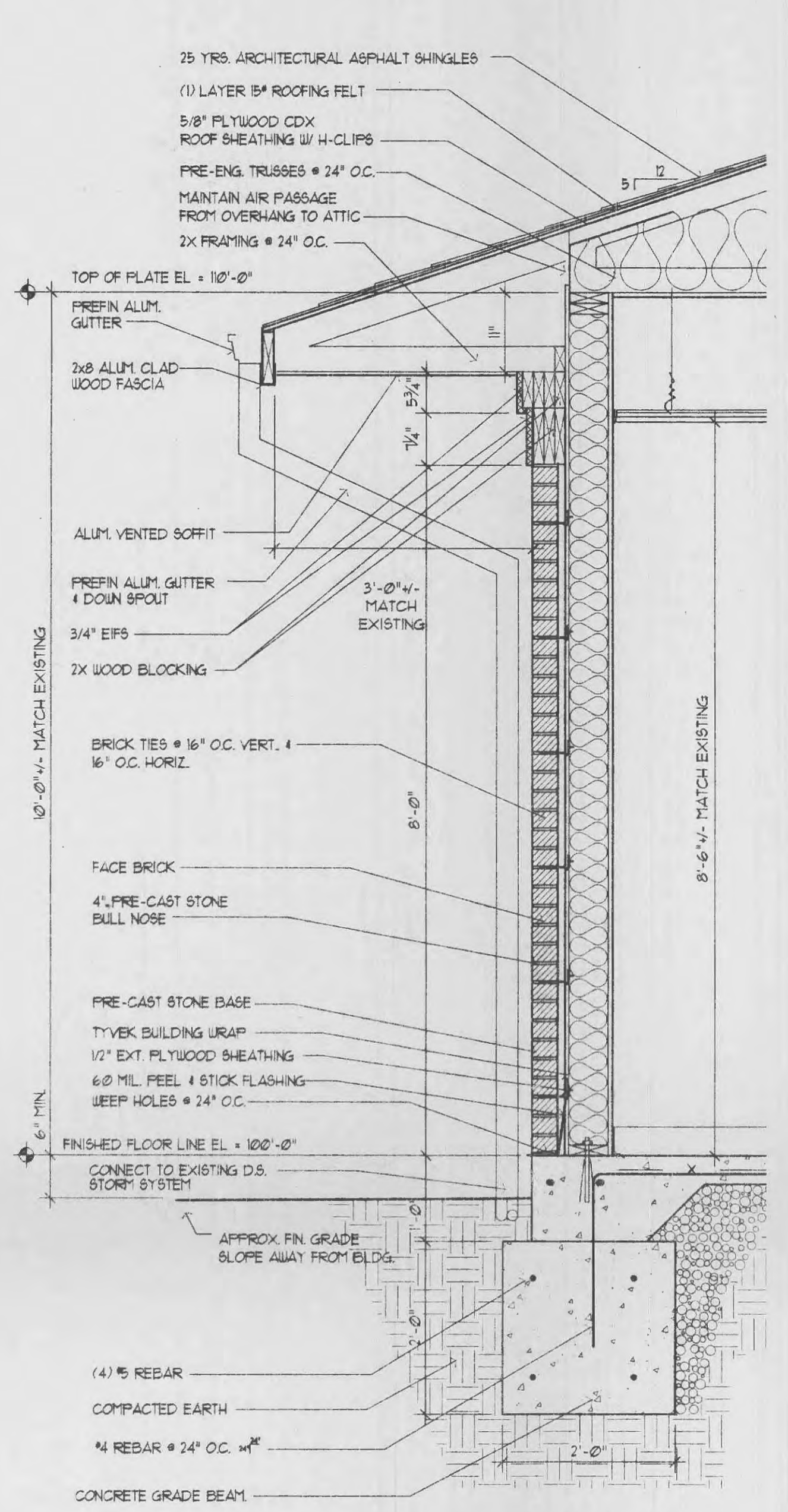
DATE	ISSUE
2-13-09	OWNER'S REVIEW
4-24-09	PERMIT/BOARD ISSUE
4-5-09	CODE RESPONSE

PROJECT MANAGER: M.J.B.  
 DRAWN BY: J.C.B.  
 PROJECT NUMBER: 09-003  
 DATE: FEBRUARY 13, 2009

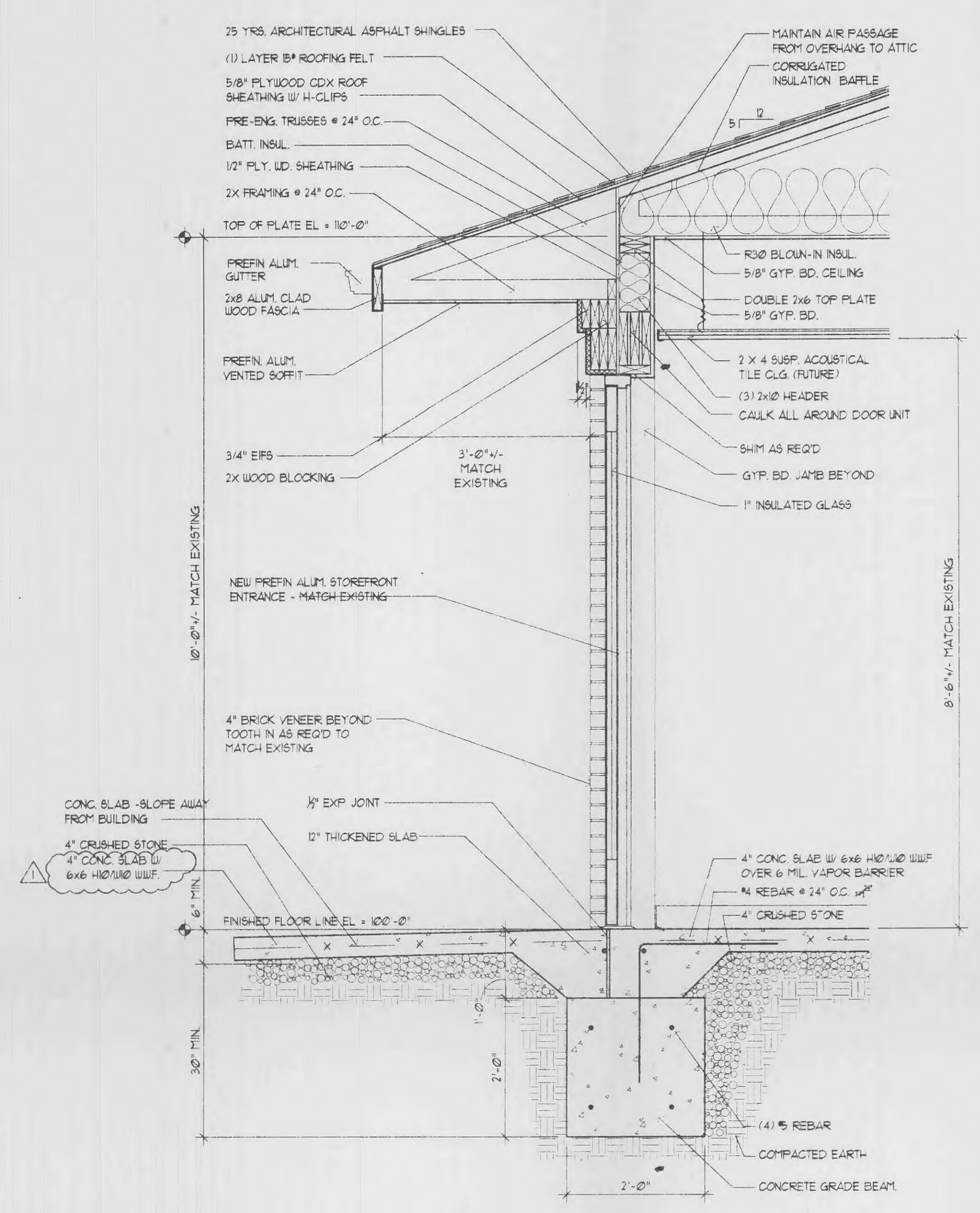
SHEET  
**A-2**  
 WALL SECTIONS  
 & DETAILS



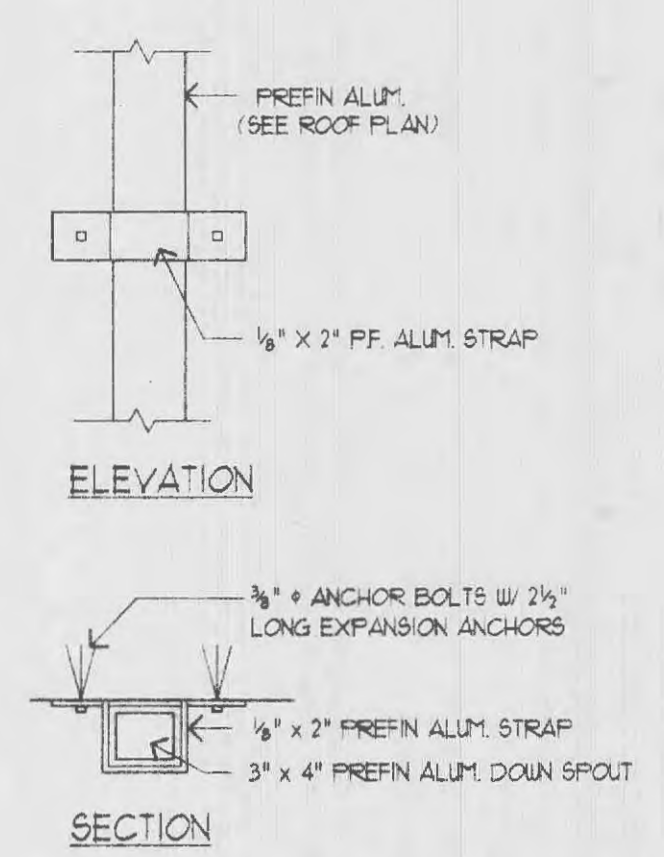
**1 WALL SECTION**  
 A-21A-1 SCALE: 3/4" = 1'-0"



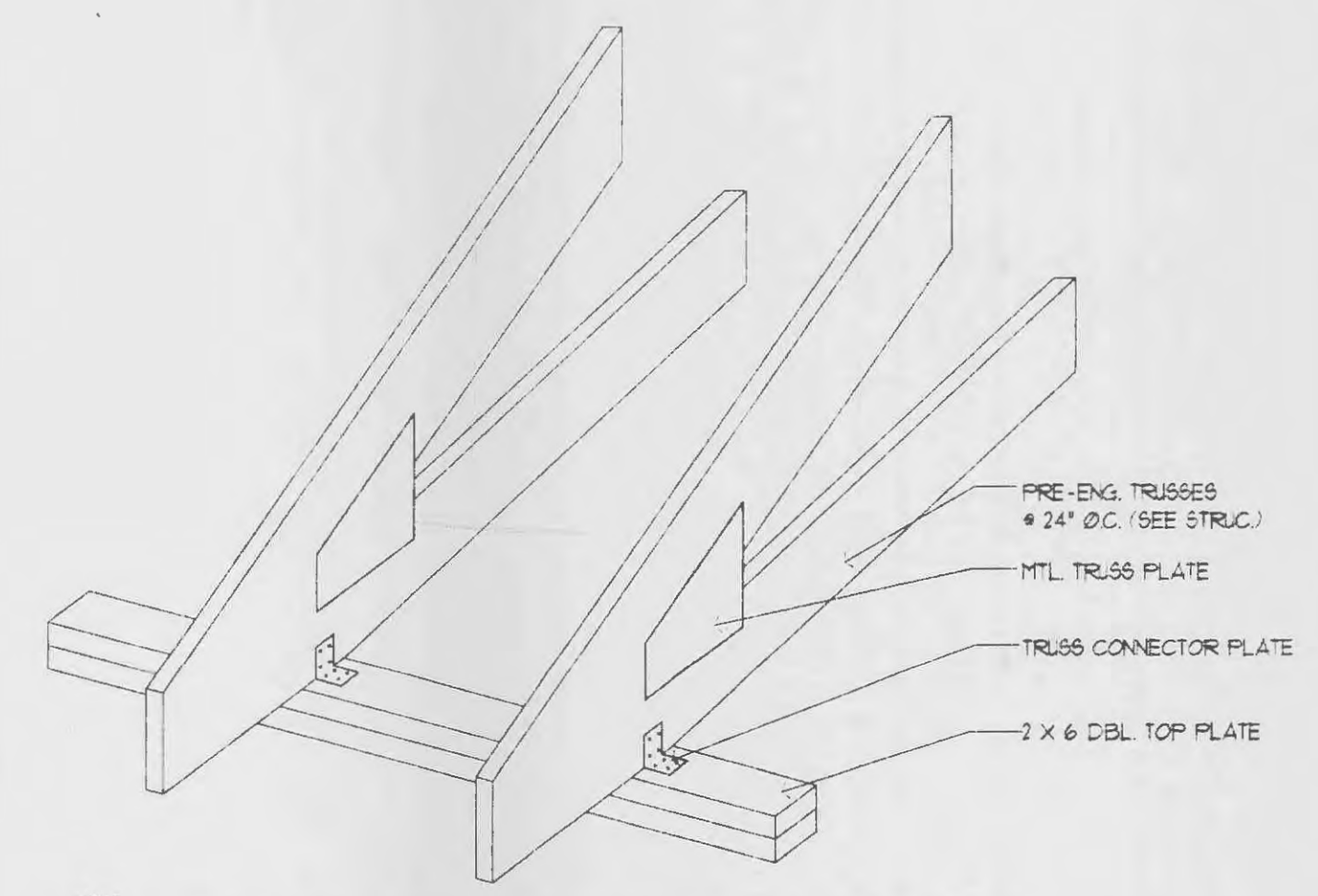
**2 WALL SECTION**  
 A-21A-1 SCALE: 3/4" = 1'-0"



**3 EXISTING WALL SECTION**  
 A-21A-1 SCALE: 3/4" = 1'-0"



**4 DETAIL @ DOWN SPOUT**  
 A-21A-2 SCALE: 1 1/2" = 1'-0"



**5 DETAIL @ TRUSS CONNECTION**  
 A-21A-2 SCALE: NOT TO SCALE