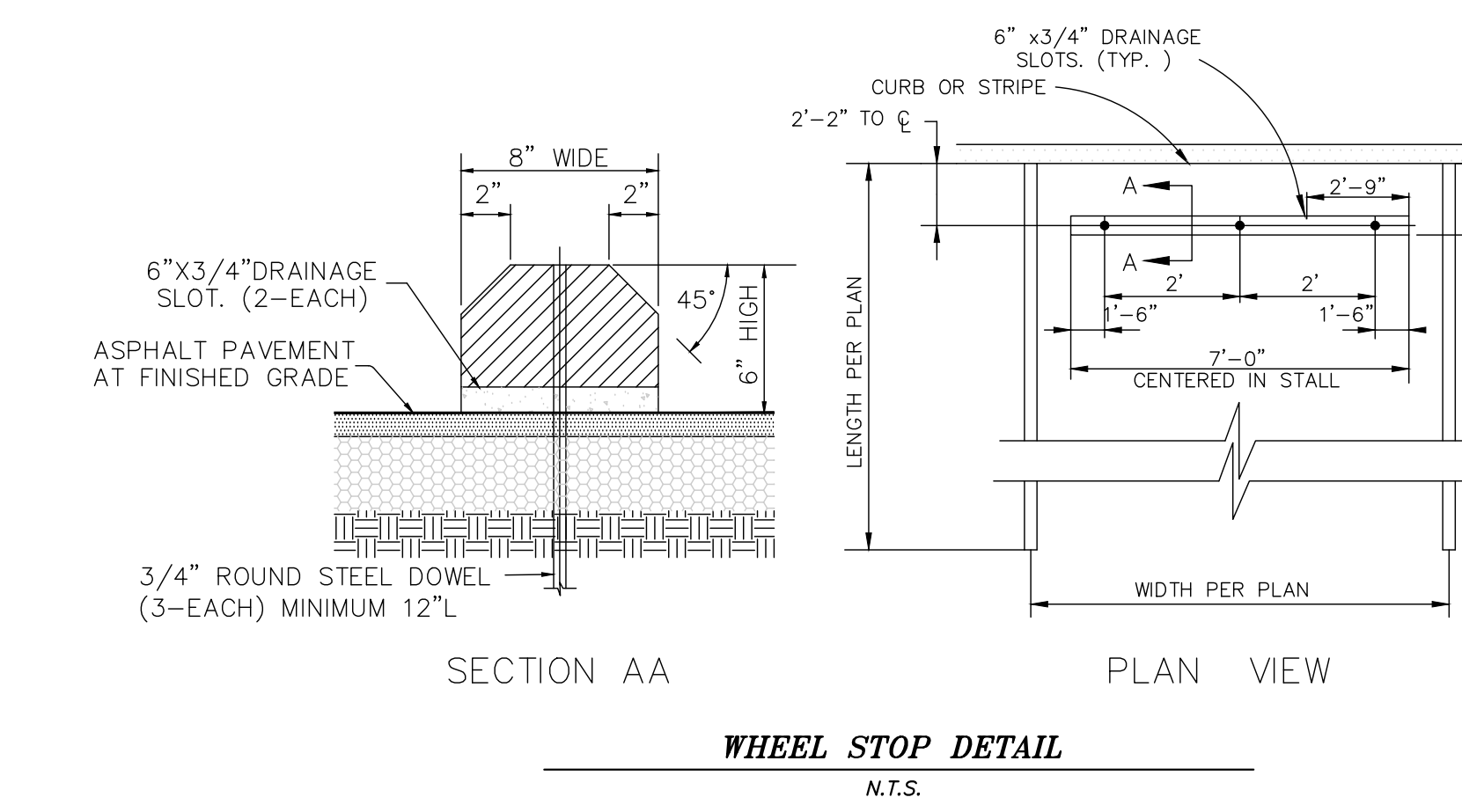
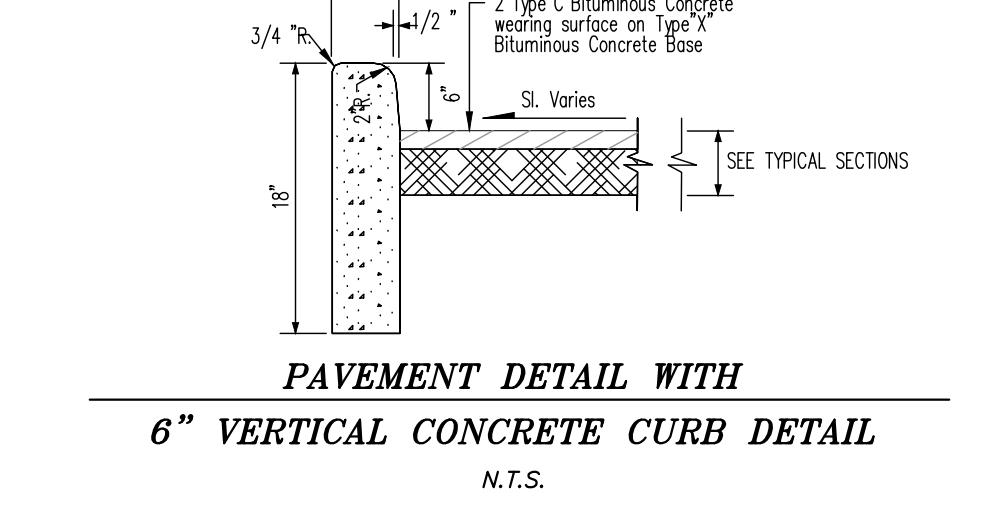
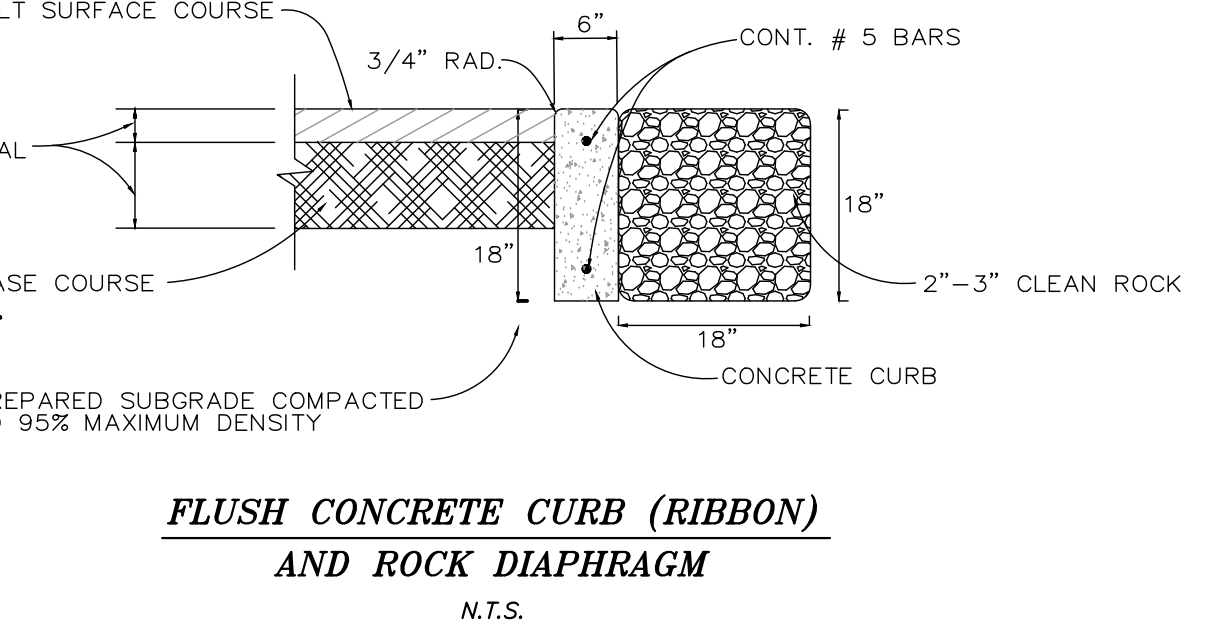


FLAT ROOF RECTANGULAR RACKS/WEIRS (STANDARD SIZES) DIMENSIONS IN INCHES TO THE NEAREST 1/4"

HOST STRUCTURE INSIDE DIMENSIONS	
LENGTH	WIDTH
11 3/8	11 3/8
16 3/4	16 3/4
22 1/8	22 1/8
27 1/2	27 1/2
32 7/8	32 7/8
38 1/4	38 1/4
43 5/8	43 5/8
49	49
54 3/8	54 3/8
59 3/4	59 3/4
65 1/8	65 1/8
70 1/2	70 1/2
75 7/8	75 7/8
81 7/8	81 7/8
87 1/4	87 1/4

CONTECH CONSTRUCTION PRODUCTS INC.
9020 DENTON ROAD, SUITE 400, DENTON, TX 76201
PH: 817-382-1232 FAX: 817-382-1239

CUSTOMER: _____ **DATE:** _____
PROJECT: _____ **DRAWN BY:** _____
APP'D BY: _____ **DETAIL:** _____



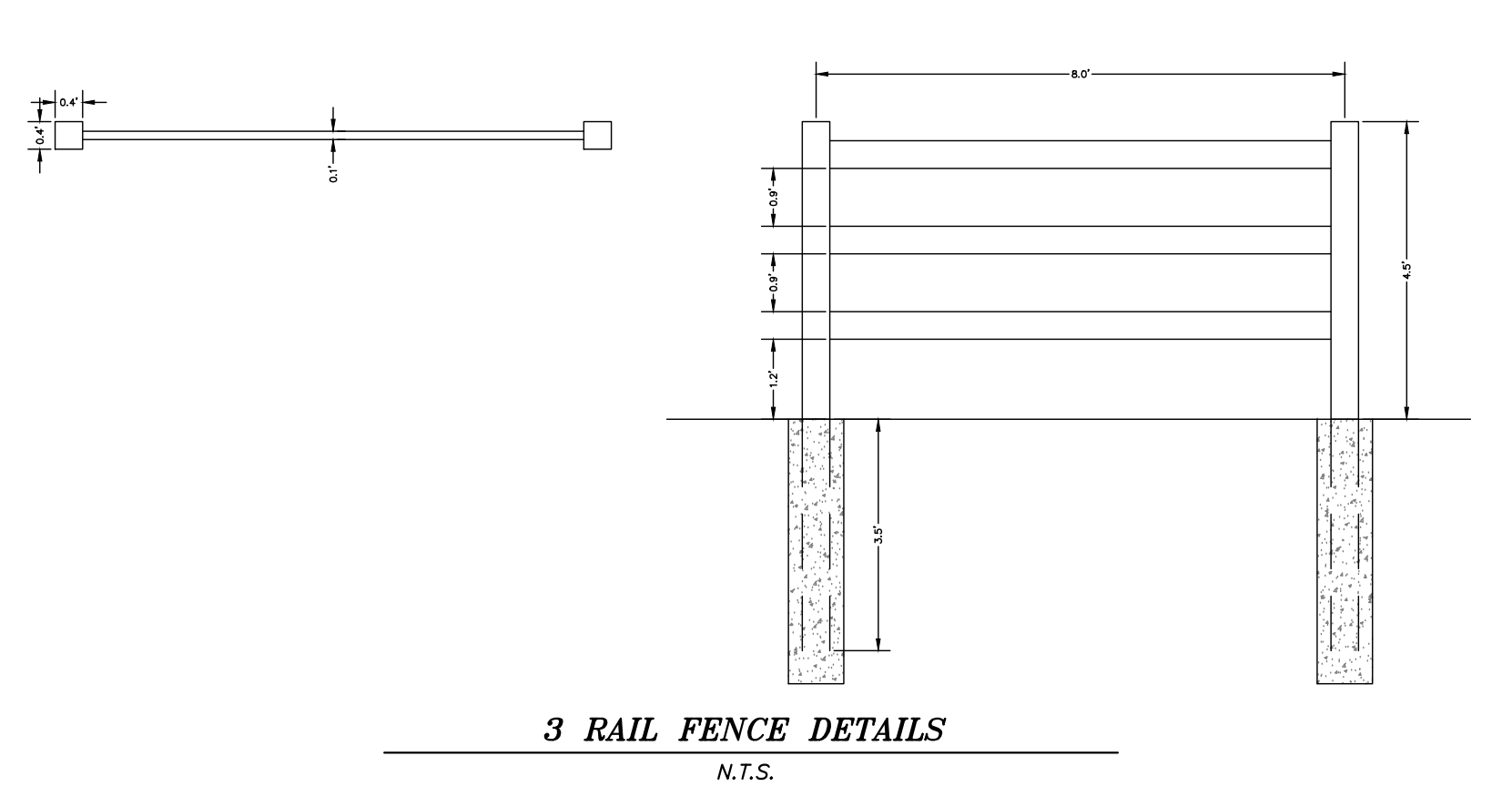
BITUMINOUS CONCRETE OVER CONCRETE PAVEMENT CUT
CONCRETE PAVEMENT CUT
BITUMINOUS CONCRETE PAVEMENT CUT

GENERAL NOTES:

- If a panel is found to require the existing concrete pavement, all of the existing concrete pavement shall be removed and replaced with new concrete pavement.
- Minimum thickness for pavement replacement is 4 inches.
- Minimum thickness for pavement replacement is 4 inches.

CITY OF O'FALLON ENGINEERING DEPARTMENT
O'FALLON, MISSOURI

DETAILS OF TEMPORARY OPENINGS IN ROADWAY PAVEMENT



LIGHT POLE BASE DETAIL
N.T.S.

BIORETENTION MEDIA SECTION DETAILS
N.T.S.

BIORETENTION PLANTING PALLET

BOTANICAL NAME	COMMON NAME	SIZE
COREOPSIS LANCEOLATA	LANCELEAF COREOPSIS	1 QT.
ECHINACEA PURPUREA	PURPLE CONFLOWER	100 mm ELLEPOT
MONARDA FISTULOSA	WILD BERGAMONT	120 mm ELLEPOT
PHLOX PANICULATA	MEADOW PHLOX	1 GALLON
PANICUM VIRGATUM	SWITCH GRASS	1 GALLON

BIORETENTION PLANT SPACING

ST DOMINIC HIGH SCHOOL
SEVERAL TRACTS OF LAND BEING U.S. SURVEY 55,
TOWNSHIP 47 NORTH, RANGE 3 EAST,
CITY OF O'FALLON,
ST. CHARLES COUNTY, MISSOURI

IMPROVEMENT PLANS

PROJECT NO: 19002.SDHS.00R

St. Peters
22 Richmond Center Court
St. Peters, MO 63376
Phone (636) 397-1211
Fax (636) 397-1104
www.pra3.com

Pickett Ray & Silver
Civil Engineering & Land Surveying
Beyond Standard

ENGINEERS AUTHENTICATION
The responsibility for professional engineering liability on this project is hereby limited to the set of plans authorized by the seal, signature, and date hereunder attached. Responsibility is disclaimed for all other engineering plans involved in this project and specifically excludes revisions after this date unless reauthorized.

PICKETT, RAY & SILVER, INC.



WILLIAM SCHIEDT, P.E.
PE-201807869

Details

Owner Information:
Archdiocese of St. Louis
20 Archbishop May Dr
St. Louis, MO 63119

City of O'Fallon Improvement Plans

P+Z No: SP19-000018
Approval Date: 6/6/2019
City No: 19-005347

Page No. **DETAILS**
10 of 11

P:\19002.SDHS.00\DWG\OUTPUT\IMPROVEMENT_PLANS\01 - COVER.DWG