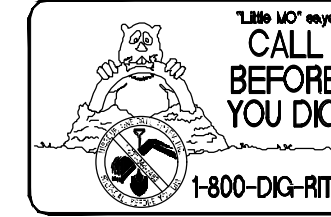


UTILITIES NOTE

UNDERGROUND FACILITIES, UTILITIES AND STRUCTURES HAVE BEEN PLOTTED FROM AVAILABLE INFORMATION AND THEREFORE, THEIR LOCATION MUST BE CONSIDERED APPROXIMATE ONLY. THERE MAY BE OTHERS, THE EXISTENCE OF WHICH IS PRESENTLY NOT KNOWN. IT IS THE RESPONSIBILITY OF THE CONTRACTOR TO HAVE ALL UTILITIES LOCATED IN THE FIELD PRIOR TO EXCAVATION OR CONSTRUCTION.



LEGEND

LIMITS OF DEMOLITION. ALL PAVEMENT WITHIN THESE LIMITS SHALL BE REMOVED. AT ALL LOCATIONS WHERE PROPOSED PAVEMENT SHALL ABUT EXISTING PAVEMENT, THE EXISTING PAVEMENT SHALL BE SAW-CUT TO THE FULL DEPTH OF THE EXISTING MATERIAL.

DEMOLITION NOTES

1. ALL BOLLARDS WITHIN THE LIMITS OF DEMOLITION SHALL BE REMOVED.
2. CONCRETE WALKS AND CURBS TO BE REMOVED SHALL BE SAWCUT AT THE NEAREST CONTRACTION OR EXPANSION JOINT.
3. CONTRACTOR SHALL REMOVE AND DISPOSE OF ALL ASPHALT, CONCRETE, ROCK, BUILDING MATERIALS, AND ALL OTHER DEBRIS AT AN APPROVED LANDFILL IN ACCORDANCE WITH ALL RULES AND REGULATIONS, INCLUDING MISSOURI DEPARTMENT OF NATURAL RESOURCES (MODNR), ST. CHARLES COUNTY.
4. EXISTING SERVICE LINES, (GAS, WATER, SANITARY, ETC.) SHALL BE REMOVED TO THE MAIN LINES, THEN CAPPED AT THE MAIN LINE CONNECTION OR COMPLETELY GROUTED FULL IN ACCORDANCE WITH THE RESPECTIVE UTILITY COMPANY STANDARDS AND SPECIFICATIONS. ALL UTILITY METERS FOR EXISTING BUILDINGS SHALL BE REMOVED.
5. PRIOR TO DEMOLITION OCCURRING, ALL EROSION CONTROL DEVICES ARE TO BE INSTALLED.

DEMOLITION KEYED NOTES

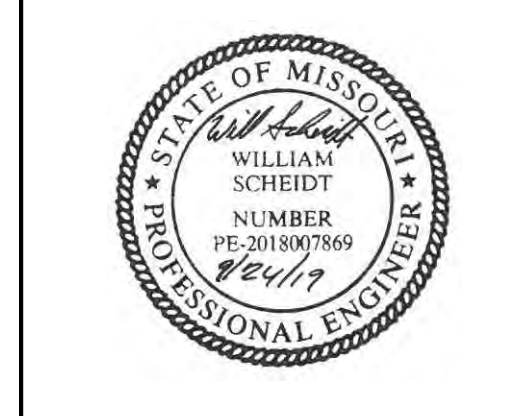
- 1 REMOVE EXISTING PAVEMENT AS REQUIRED INSIDE DEMOLITION LIMITS
- 2 REMOVE EXISTING BUILDING
- 3 REMOVE EXISTING LANDSCAPING
- 4 REMOVE EXISTING FENCE
- 5 REMOVE EXISTING STORM STRUCTURE
- 6 REMOVE EXISTING ELECTRICAL SERVICE LINE & METER. COORDINATE WITH THE PROPER AUTHORITIES.
- 7 REMOVE EXISTING CURB
- 8 REMOVE TELEPHONE LINE. COORDINATE WITH THE PROPER AUTHORITIES.
- 9 REMOVE STORM PIPE
- 10 REMOVE EXISTING STRIPING
- 11 REMOVE AND RELOCATE GAS VALVE. COORDINATE WITH THE PROPER AUTHORITIES.
- 12 REMOVE WATER METER. COORDINATE WITH THE PROPER AUTHORITIES.

ST DOMINIC HIGH SCHOOL
SEVERAL TRACTS OF LAND BEING U.S. SURVEY 55,
TOWNSHIP 47 NORTH RANGE 3 EAST,
CITY OF FALLON,
ST. CHARLES COUNTY, MISSOURI
IMPROVEMENT PLANS

St. Peters
22 Richmond Center Court
St. Peters, MO 63376
Phone (636) 397-1211
Fax (636) 397-1104
www.prs3.com

Pickett Ray & Silver
Civil Engineering & Land Surveying
Beyond Standard

ENGINEER'S AUTHENTICATION
The responsibility for professional engineering liability on this project is hereby limited to the set of plans authorized by the seal, signature, and date hereunder attached. Responsibility is disclaimed for all other engineering plans involved in this project and specifically excludes revisions after this date unless reauthorized.



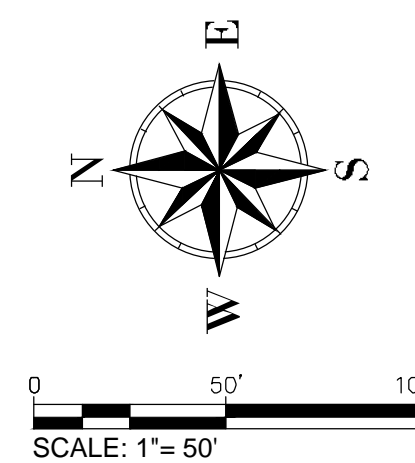
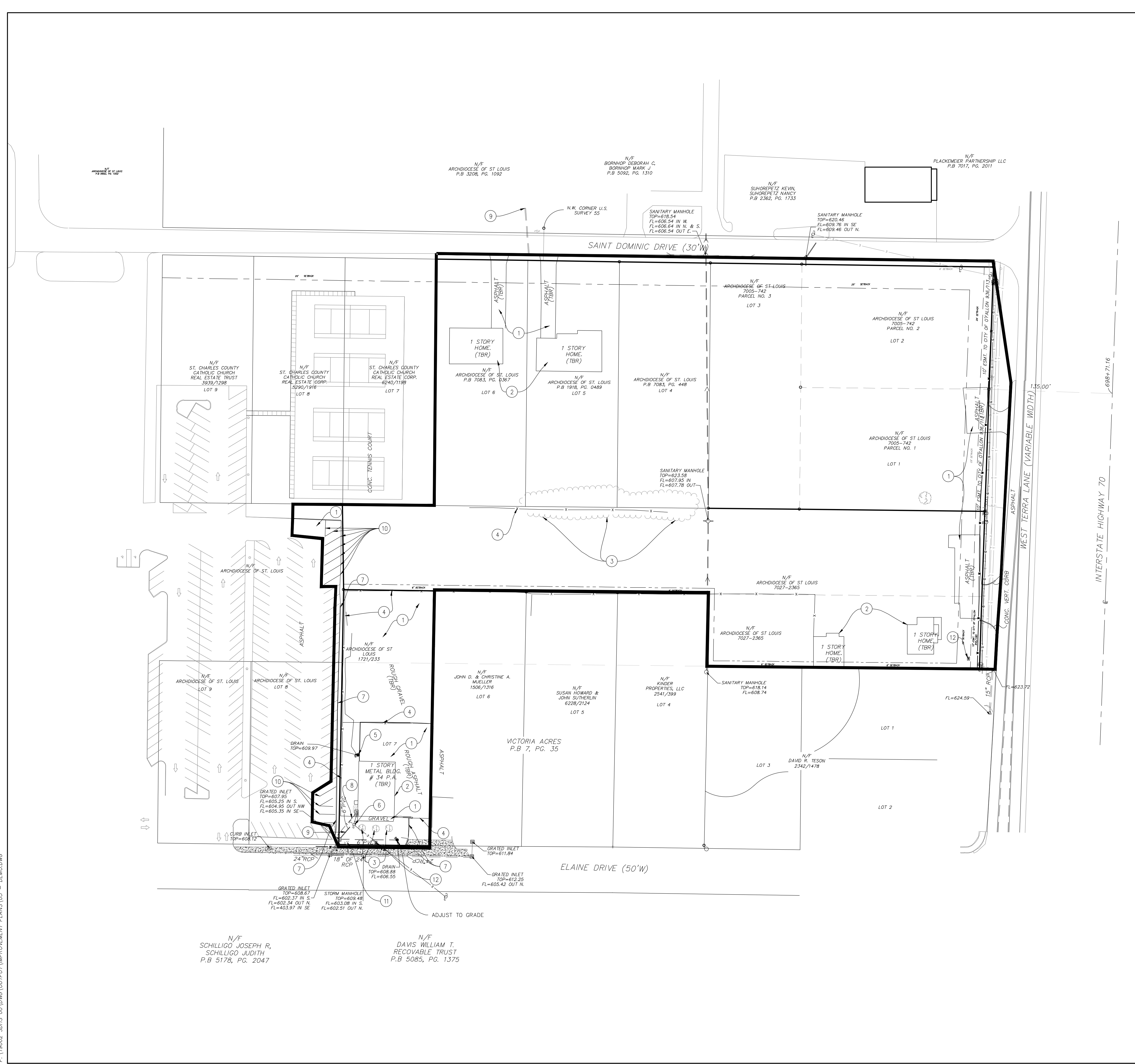
WILLIAM SCHEIDT, P.E.
PE-2018007869

Existing Conditions and Demolition Plan

Owner Information:
Archdiocese of St. Louis
20 Archbishop May Dr
St. Louis, MO 63119

P+Z No: SP19-000018
Approval Date: 6/6/2019
City No: 19-005347

Page No.
DEMO PLAN
3 of 11



P:\19002_SCHS_00\DWG\OUTPUT\IMPROVEMENT PLANS\03 - DEMO.DWG

09/24/19 IMPROVEMENT PLAN REVISION SUBMITTAL