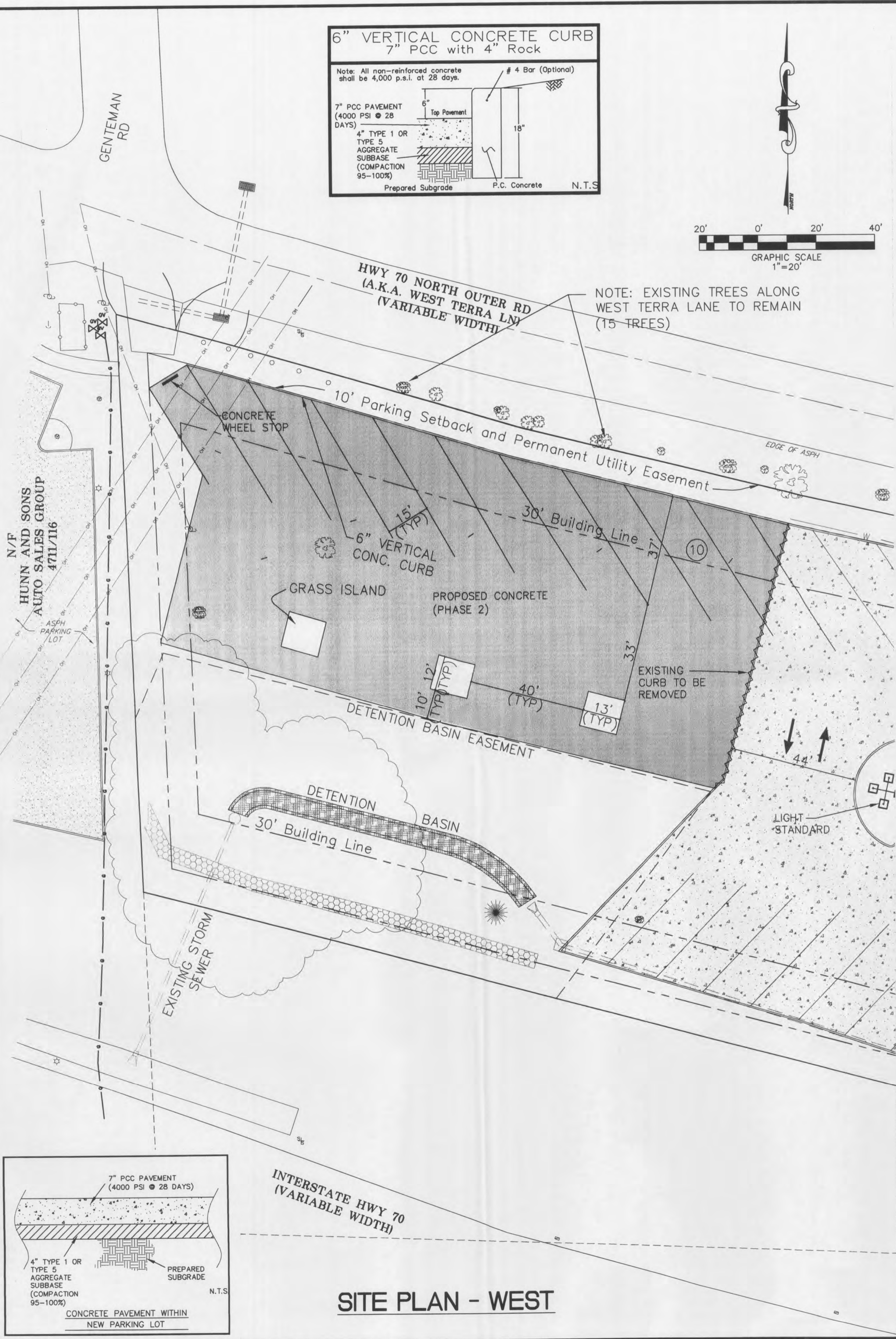
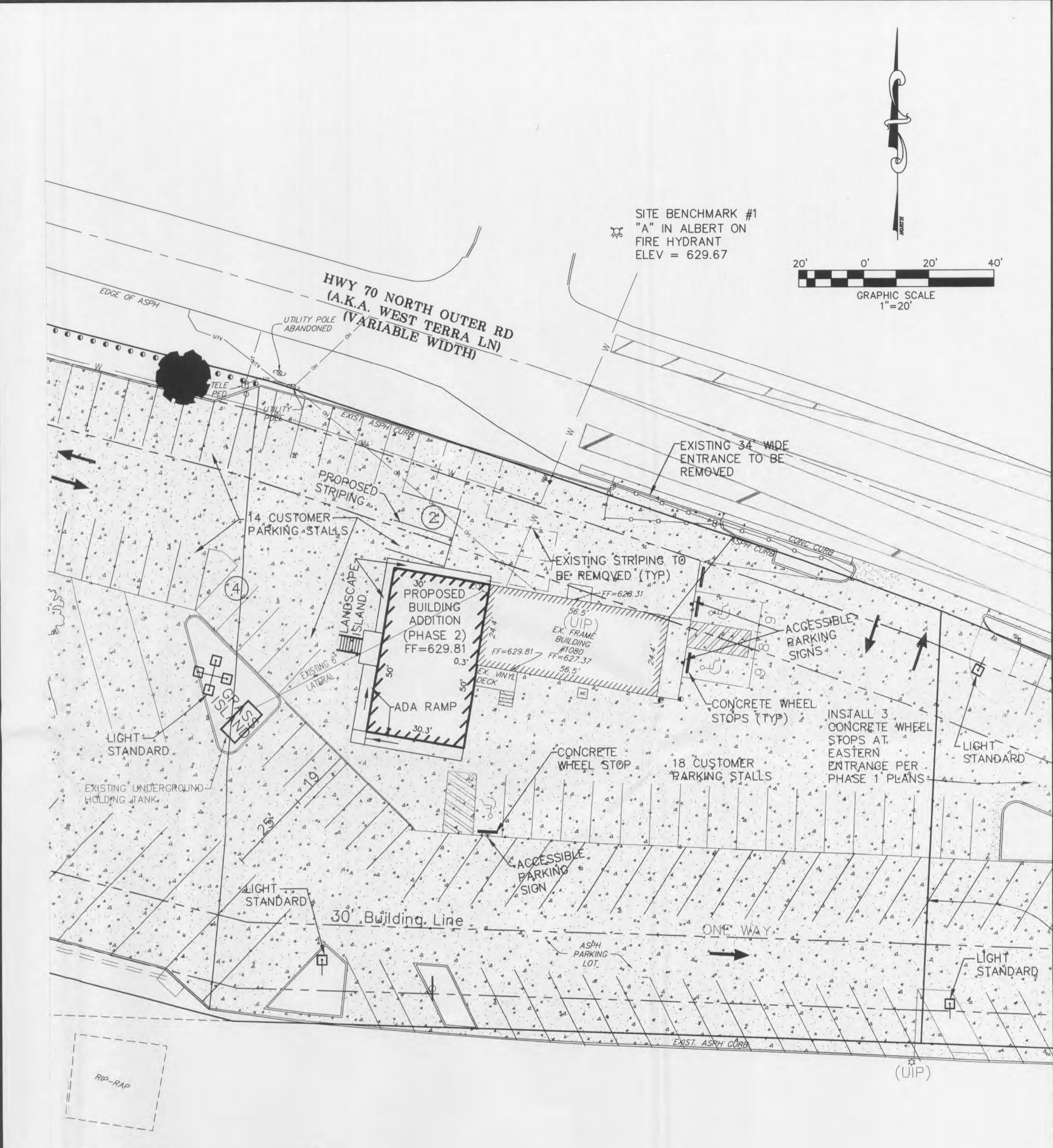
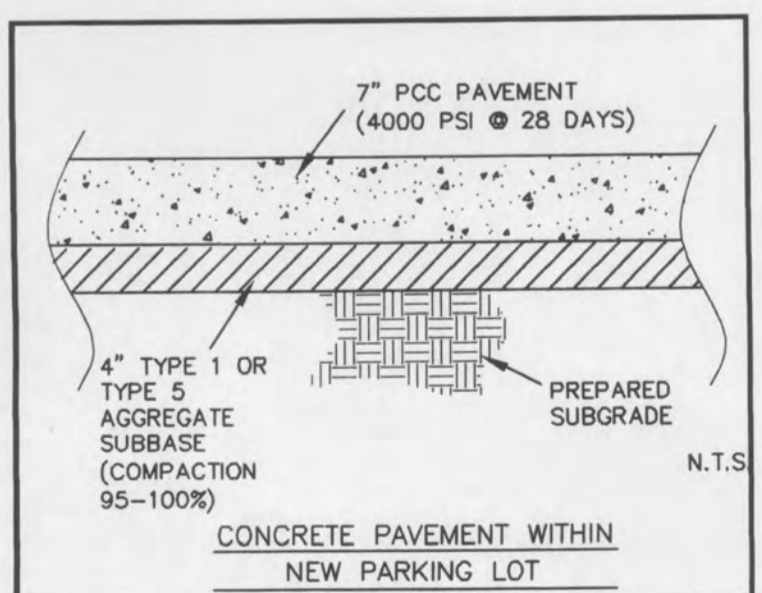


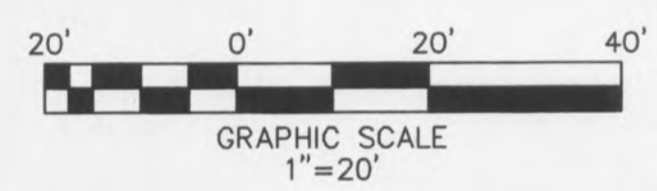
NOTE: EXISTING TREES ALONG WEST TERRA LANE TO REMAIN (15 TREES)



**SITE PLAN - WEST**



SITE BENCHMARK #1  
"A" IN ALBERT ON  
FIRE HYDRANT  
ELEV = 629.67



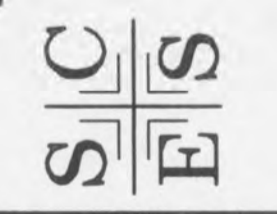
INTERSTATE HWY 70  
(VARIABLE WIDTH)

**SITE PLAN - EAST**

ST. LOUIS RV SALES  
SITE PLAN

ST. CHARLES ENGINEERING & SURVEYING, INC.

801 S. FIFTH STREET, SUITE 202  
ST. CHARLES, MO 63301  
TEL: (636) 947-0607 FAX: (636) 947-2448  
ST. CHARLES ENGINEERING AND SURVEYING, INC.  
PROFESSIONAL ENGINEERING CORPORATION  
MISSOURI STATE CERTIFICATE OF AUTHORITY - 001647



ORDER NO. 12-0146  
DATE 08/05/18