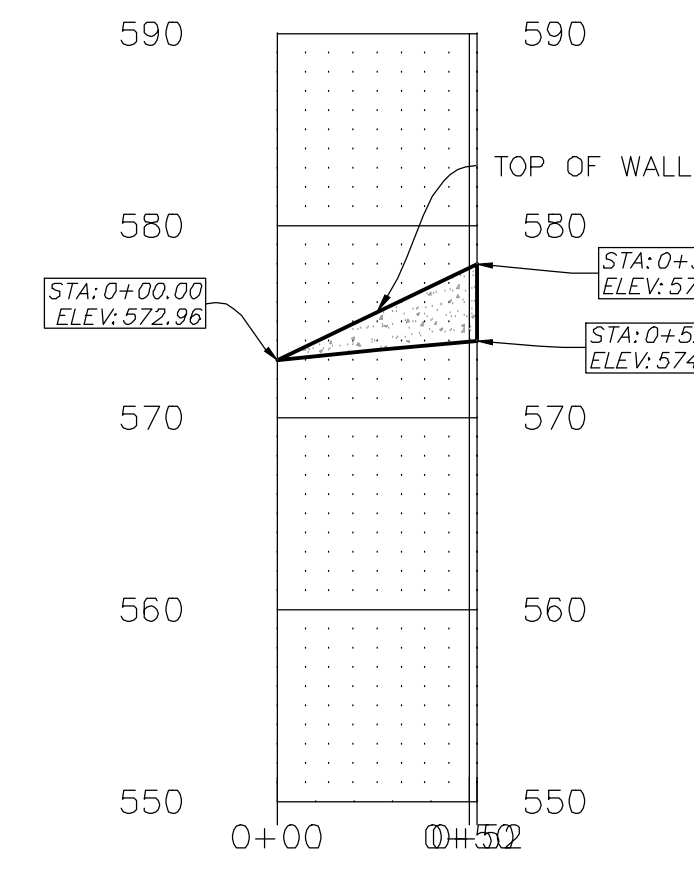
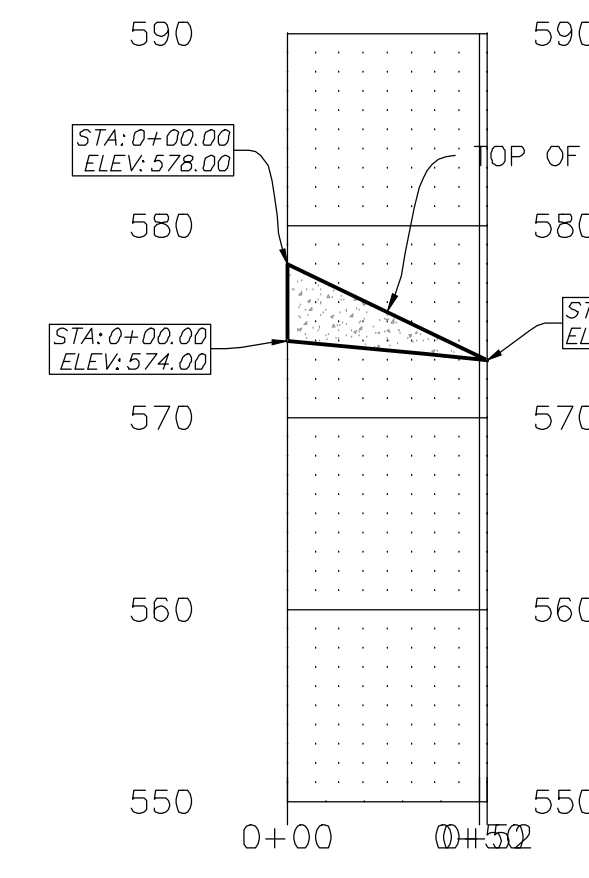


Node ID:	AI-1.5	GI-1.4	CI-1.3	MH-1.2	MH-1.1	EX CI-2	EXCI-3
Rim (ft):	573.67	573.01	573.66	575.09	575.06	567.62	567.24
Invert (ft):	569.01	568.12	566.02	565.3	565.06	560.97	559.67
Max HGL (ft):	569.43	568.92	567.02	567.28	566.91	564.17	560.96
Link ID:	1.5-1.4	1.4-1.3	1.3-1.2	1.2-1.1	1.1-2	EXCI2-EXCI3	
Length (ft):	68.5	190.15	51.85	18.59	156.95	109.8	
Dia (in):	12	15	15	15	15	18	
Slope (ft/ft):	0.0101	0.01	0.01	0.0199	0.01	0.01	
Up Invert (ft):	569.01	568.12	566.02	566.3	564.86	560.97	
Dn Invert (ft):	568.32	566.22	565.5	566.43	563.29	559.67	
Max Q (cfs):	1.46	5.21	6.3	3.14	6.31	9.98	
Max Vel (ft/s):	7.11	6.37	6.48	7.14	6.91	7.3	
Max Depth (ft):	0.42	0.8	0.93	0.48	0.88	1.09	

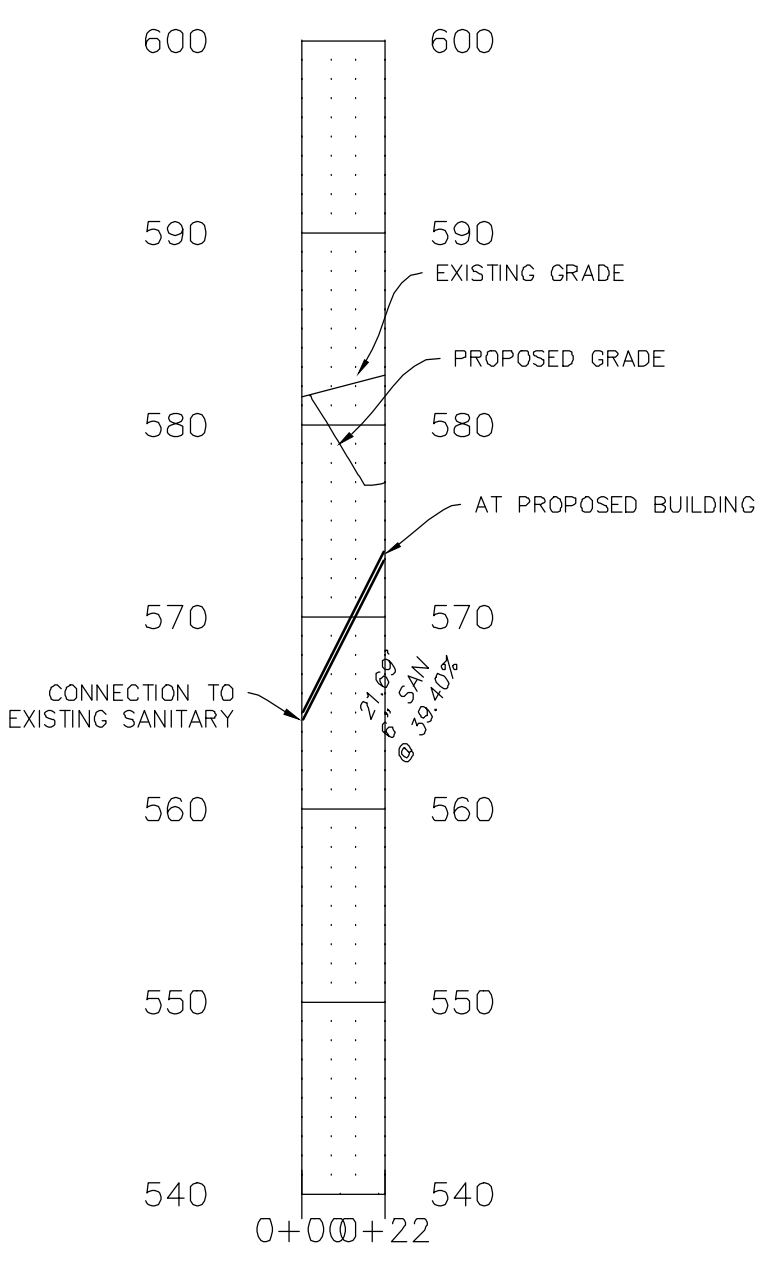
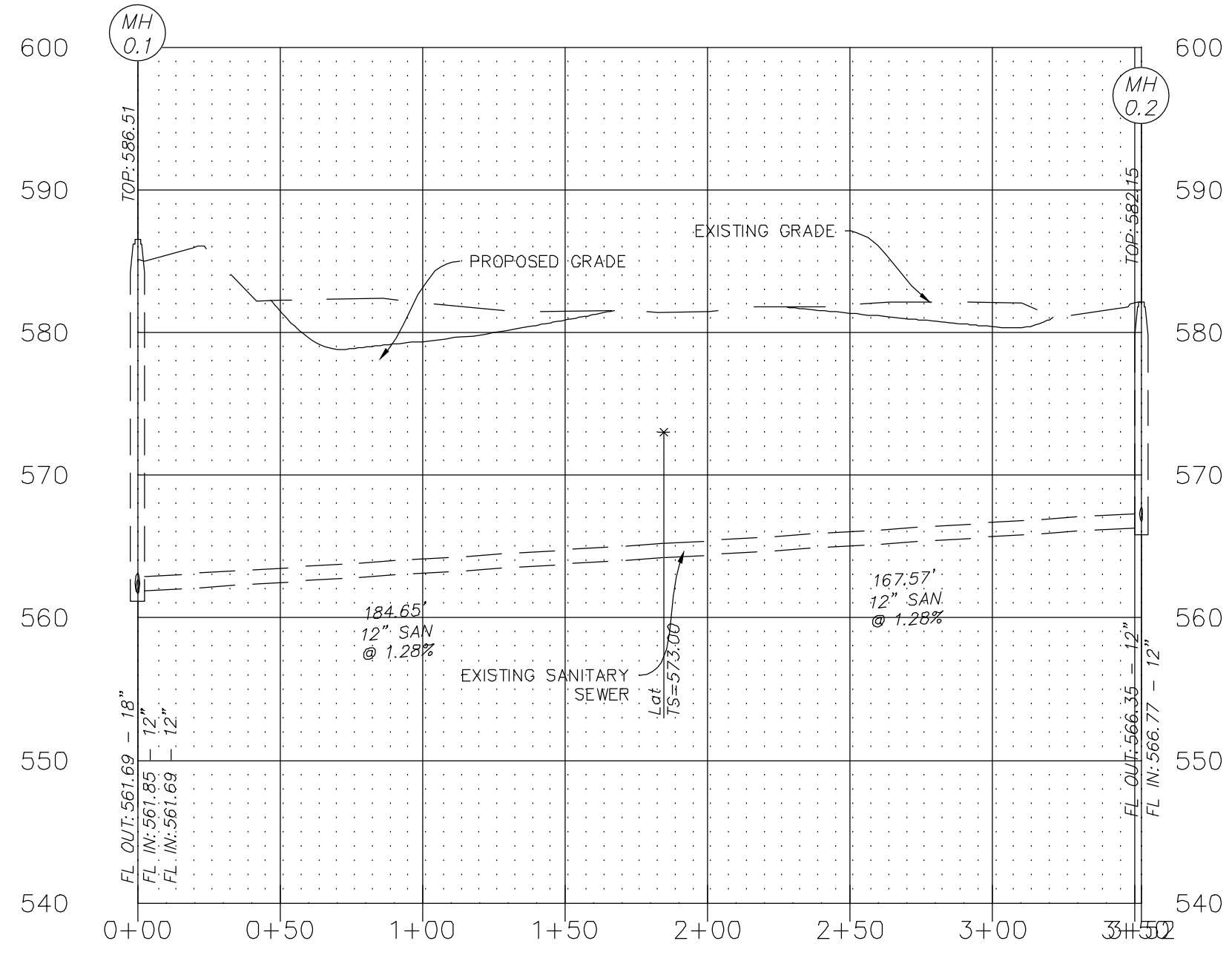
Node ID:	AI-2.2	MH-2.1	EX CI-2	EXCI-3	Out-01
Rim (ft):	575.53	574.11	567.62	567.24	
Invert (ft):	569.68	568.77	560.97	559.67	559.27
Max HGL (ft):	570.07	569.26	564.17	560.96	560.19
Link ID:	2.2-2.1	2.1-2	EXCI2-EX	EXCI3-OUTLET	
Length (ft):	80.91	274.23	109.8	20	
Dia (in):	15	15	18	21	
Slope (ft/ft):	0.01	0.02	0.01	0.02	
Up Invert (ft):	569.68	568.77	560.97	559.67	
Dn Invert (ft):	568.97	563.29	559.67	559.27	
Max Q (cfs):	1.45	1.46	9.98	13.15	
Max Vel (ft/s):	4.51	5.86	7.3	10.29	
Max Depth (ft):	0.39	0.32	1.09	0.92	



Element ID	Inlet Location	Number of Inlets	Catchbasin Invert Elevation	Max (Rim) Elevation	Max (Rim) Offset	Initial Water Elevation	Initial Water Depth	Gutter Slope	Peak Water Flow (cfs)	Peak Cross Flow (cfs)	Peak Flow Intercepted by Inlet	Peak Flow Bypassing Inlet	Peak Flow during	Inlet Efficiency (%)
AI-1.5	On Grade	1	569.01	573.67	4.66	569.01	0.00	0.0200	3.29	1.46	1.84	44.20		
AI-2.2	On Sag	1	569.68	575.53	5.85	569.68	0.00	0.0620	1.45	N/A	N/A	N/A		
CI-1.3	On Grade	1	566.02	573.66	7.66	566.02	0.00	0.0200	1.84	0.45	1.39	24.52		
EX CI-2	On Grade	1	560.97	567.62	6.65	560.97	0.00	0.0200	2.59	0.83	1.75	32.14		
EXCI-3	On Grade	1	559.67	567.24	7.57	559.67	0.00	0.0200	1.81	1.43	0.37	79.34		

Element ID	Invert Elevation	Ground/Rim (Max) Elevation	Ground/Rim (Max) Offset	Initial Water Elevation	Surcharge Water Elevation	Peak Inflow	Maximum HGL Attained	Maximum HGL Depth	Minimum Freeboard	Average HGL Elevation	Average HGL Depth
HYDRO-SEPARATOR	565.18	575.09	9.91	565.18	575.09	3.16	565.87	0.69	9.22	565.19	0.01
MH-1.1	565.06	575.06	10.00	565.06	575.06	6.30	566.91	1.85	8.15	566.44	1.38
MH-2.1	568.77	574.11	5.34	568.77	574.11	1.45	569.26	0.49	4.85	568.88	0.11

SN	Element Description	From (Inlet) Node	To (Outlet) Node	Length	Inlet Invert	Inlet Offset	Outlet Invert	Outlet Offset	Total Invert	Average Slope	Pipe Diameter	Pipe Material	Initial Flow	Peak Flow	Time of Occurrence	Max Travel Time	Max Flow Velocity	Max Flow / Capacity	Max Flow / Depth	Max Flow / Ratio	
1	1.3-2	MH-1.1	EX CI-2	18.89	568.88	-0.20	568.29	2.32	568.09	0.0032	15.000	15.000	0.0020	0.00	0.0020	6.91	0.38	7.49	0.85	0.71	0.88
2	1.3-2	MH-1.1	MH-1.2	18.89	568.88	1.30	568.43	1.37	568.00	0.0020	15.000	15.000	0.0020	0.00	0.0020	7.14	0.39	8.67	0.83	0.86	0.88
3	1.3-2	CI-1.3	MH-1.2	18.89	566.02	0.00	565.50	0.20	565.70	0.0020	15.000	15.000	0.0020	0.00	0.0020	6.48	0.33	7.01	0.90	0.74	0.93
4	1.3-2	GI-1.4	CI-1.3	18.89	568.92	0.00	568.29	0.00	568.29	0.0020	15.000	15.000	0.0020	0.00	0.0020	6.97	0.39	7.00	0.74	0.84	0.88
5	1.3-2	AI-1.5	CI-1.3	18.89	569.43	0.00	568.32	0.00	568.32	0.0020	15.000	15.000	0.0020	0.00	0.0020	7.11	0.38	8.07	0.88	0.82	0.82
6	2.2-2.1	MH-2.1	EX CI-2	274.23	568.77	0.00	568.29	2.32	568.00	0.0020	15.000	15.000	0.0020	0.00	0.0020	8.86	0.76	9.89	0.93	0.26	0.82
7	2.2-2.1	MH-2.1	MH-1.1	18.89	568.88	0.00	568.43	0.00	568.43	0.0020	15.000	15.000	0.0020	0.00	0.0020	6.51	0.36	7.00	0.21	0.81	0.89
8	EXCI-3	EX CI-2	EXCI-3	109.8	567.62	0.00	567.24	0.00	567.24	0.0020	18.000	18.000	0.0020	0.00	0.0020	7.30	0.35	11.39	0.88	0.73	0.89
9	EXCI-3	EXCI-3	OUTLET	20.0	567.24	0.00	567.24	0.00	567.24	0.0020	21.000	21.000	0.0020	0.00	0.0020	6.29	0.38	24.38	0.81	0.82	0.82
10	HYDRO-SEPARATOR	MH-1.2	HYDRO-SEPARATOR	12.00	565.18	0.00	565.18	0.00	565.18	0.0020	12.000	12.000	0.0020	0.00	0.0020	5.90	0.24	3.86	0.82	0.89	0.89
11	HYDRO-SEPARATOR	MH-1.1	HYDRO-SEPARATOR	12.00	565.06	0.00	565.06	0.00	565.06	0.0020	12.000	12.000	0.0020	0.00	0.0020	5.90	0.24	3.86	0.82	0.89	0.89



UTILITIES NOTE

UNDERGROUND FACILITIES, UTILITIES AND STRUCTURES HAVE BEEN PLOTTED FROM AVAILABLE INFORMATION AND THEREFORE, THEIR LOCATION MUST BE CONSIDERED APPROXIMATE ONLY. THERE MAY BE OTHERS, THE EXISTENCE OF WHICH IS PRESENTLY NOT KNOWN. IT IS THE RESPONSIBILITY OF THE CONTRACTOR TO HAVE ALL UTILITIES LOCATED IN THE FIELD PRIOR TO EXCAVATION OR CONSTRUCTION.

PROJECT TITLE
IMPROVEMENT PLANS
STL WHOLESAL

PROFILES

St. Peters
22 Richmond Center Court
St. Peters, MO 65276
Phone (636) 397-1211
Fax (636) 397-1104
www.prs8.com

PRR No. 86165/PPRO001
TASK 003

Pickett Ray & Silver
Civil Engineering & Land Surveying
Beyond Standard

ENGINEER'S AUTHORIZATION
THE RESPONSIBILITY FOR PROFESSIONAL ENGINEERING LIABILITY ON THIS PROJECT IS HEREBY LIMITED TO THE SET OF PLANS AUTHORIZED BY THE SEAL, SIGNATURE, AND DATE REFERRED ATTACHED. NO OTHER LIABILITY IS ASSUMED FOR ALL OTHER ENGINEERING PLANS INVOLVED IN THIS PROJECT AND SPECIALLY EXCLUDED HEREON AFTER THIS DATE, UNLESS REQUANTIFIED.

WILLIAM S. SCHAFFERT
Professional Engineer
No. 01262023

Developer / Owner Information

Pinkerton Properties LLC
801 Texas Court
O'Fallon, Missouri 63366

P+Z No. 21-003918
City No.
Approved 06-03-2021
Page No.