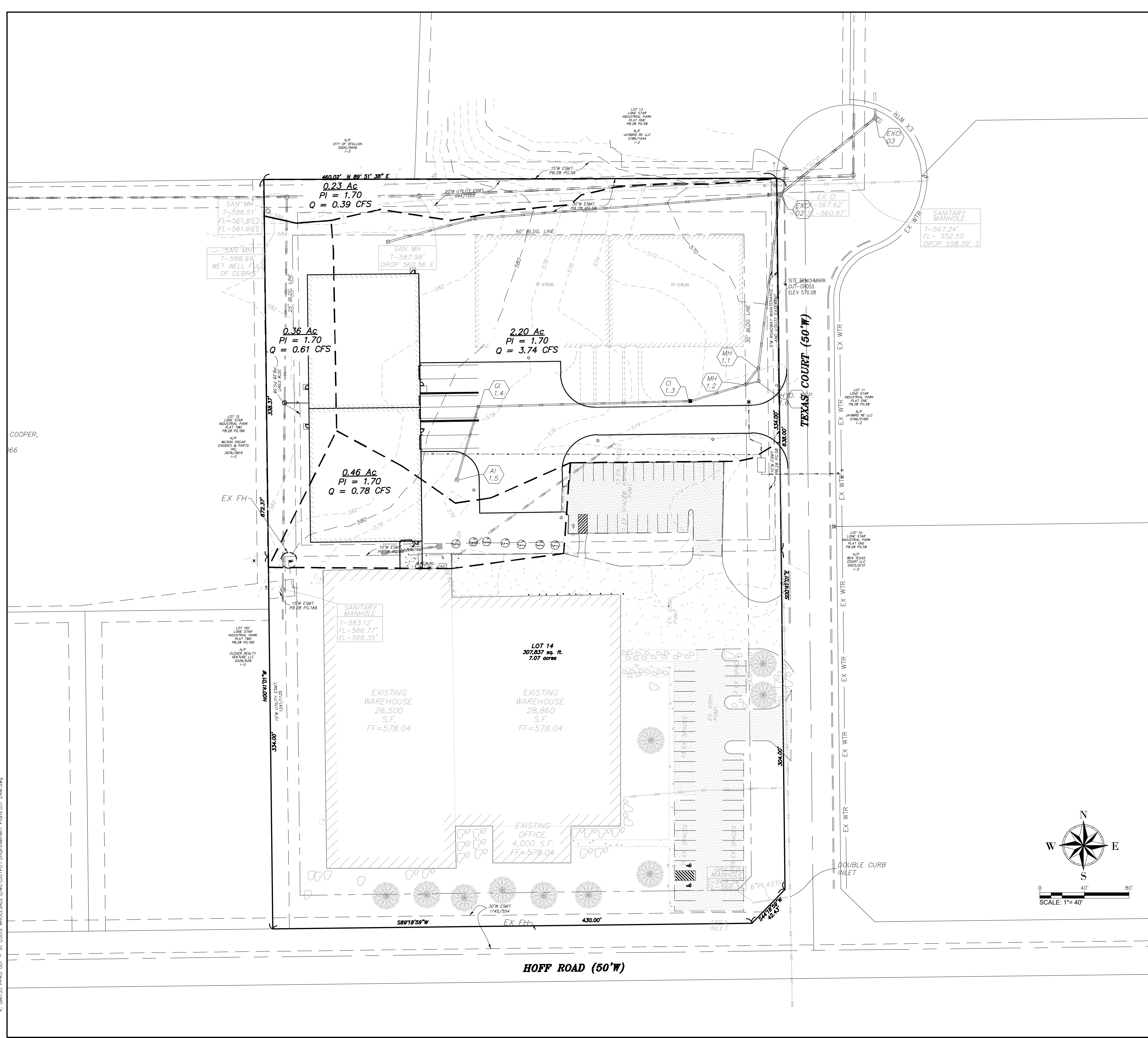
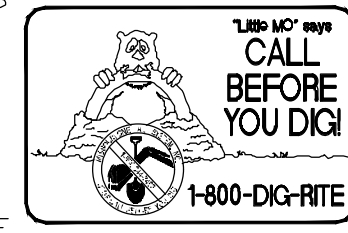


K:\86155 PPR0 001 - ST. LOUIS WHOLESALE\DWG\OUTPUT\Improvement_Plan\07 DAM.dwg



UTILITIES NOTE
 UNDERGROUND FACILITIES, UTILITIES AND STRUCTURES HAVE BEEN PLOTTED FROM AVAILABLE INFORMATION AND THEREFORE, THEIR LOCATION MUST BE CONSIDERED APPROXIMATE ONLY. THERE MAY BE OTHERS, THE EXISTENCE OF WHICH IS PRESENTLY NOT KNOWN. IT IS THE RESPONSIBILITY OF THE CONTRACTOR TO HAVE ALL UTILITIES LOCATED IN THE FIELD PRIOR TO EXCAVATION OR CONSTRUCTION.



PROJECT TITLE
 IMPROVEMENT PLANS
 STL WHOLESALE
 PRE-DEVELOPMENT DRAINAGE AREA MAP

St. Peters
 22 Richmond Center Court
 St. Peters, MO 65276
 Phone (636) 397-1211
 Fax (636) 397-1104
 www.prs.com



ENGINEERS AUTHENTICATION
 THE RESPONSIBILITY FOR PROFESSIONAL ENGINEERING LIABILITY ON THIS PROJECT IS HEREBY ALLOTTED TO THE SET OF PLANS AUTHENTICATED BY THE SEAL, SIGNATURE, AND DATE HEREON ATTACHED. RESPONSIBILITY IS EXCLUDED FOR ALL OTHER ENGINEERING PLANS INVOLVED IN THIS PROJECT AND SPECIFICALLY EXCLUDED HEREON AS OF THIS DATE, UNLESS REAUTHENTICATED.



Developer / Owner Information
 Pinkerton Properties LLC
 801 Texas Court
 O'Fallon, Missouri 63366

P+Z No.
 21-003918
City No.
 Approved 06-03-2021
Page No.
 08 of 12

*** 2022/08/22 ***