

CASCADE SEPARATOR DESIGN NOTES

THE FOLLOWING IS A COMPILATION OF DESIGN AND CONSTRUCTION REQUIREMENTS AND AVAILABLE AND UNAVAILABLE LOADS. THESE REQUIREMENTS MAY BE COMBINED TO MEET THE REQUIREMENTS OF THE PROJECT. ALL MATERIALS AND METHODS OF CONSTRUCTION SHALL BE APPROVED BY THE ENGINEER BEFORE CONSTRUCTION.

CONFIGURATION DESCRIPTION

GRAVEL INLET FILTER PIPE
GRAVEL INLET FILTER PIPE OR PIPES
COVER ONLY (NO INLET PIPE)
COVER ONLY (NO INLET PIPE)

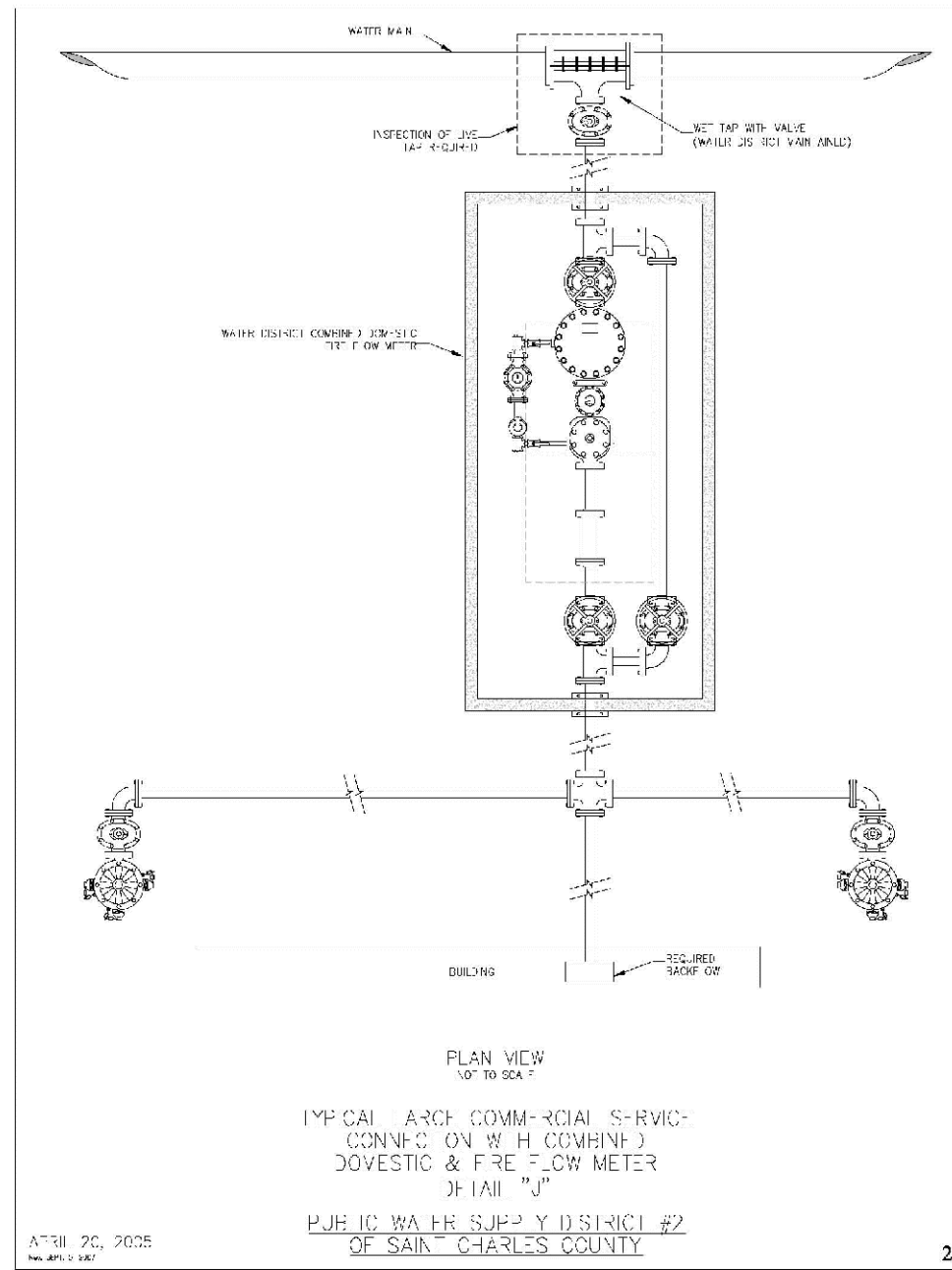
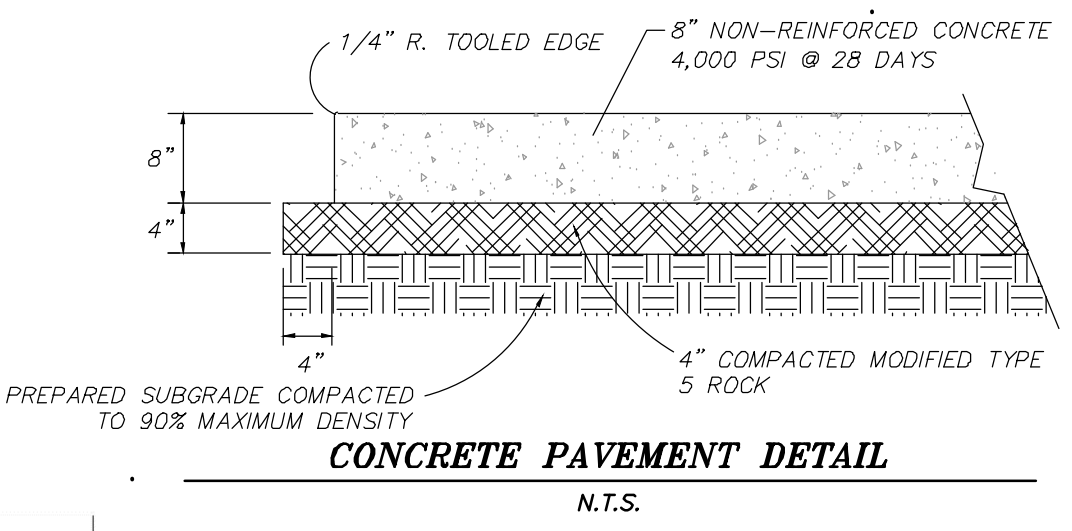
SITE SPECIFIC DATA REQUIREMENTS

TYPE OF PROJECT	REQUIREMENTS
NEW CONSTRUCTION	MINIMUM COVER DEPTH (MIN. TO TOP)
EXISTING CONSTRUCTION	MINIMUM COVER DEPTH (MIN. TO TOP)
RECONSTRUCTION	MINIMUM COVER DEPTH (MIN. TO TOP)

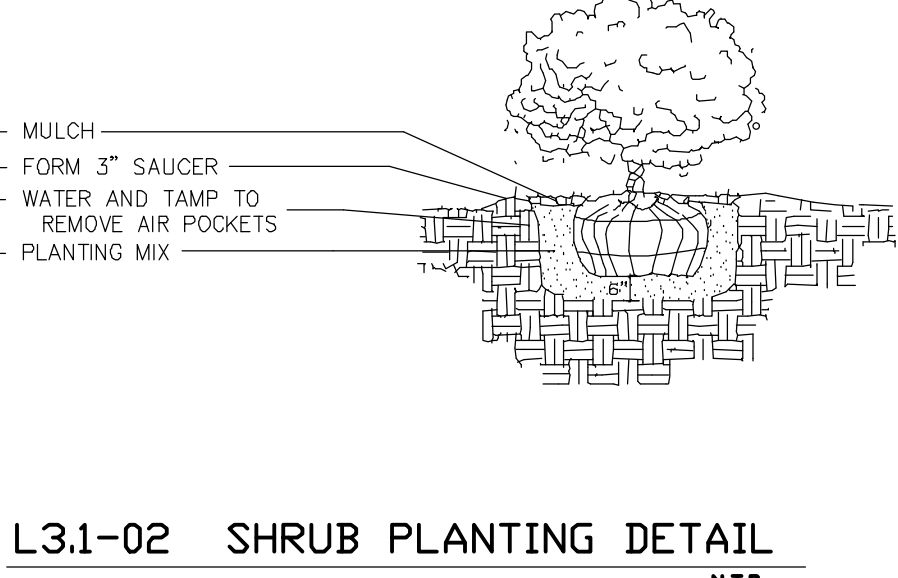
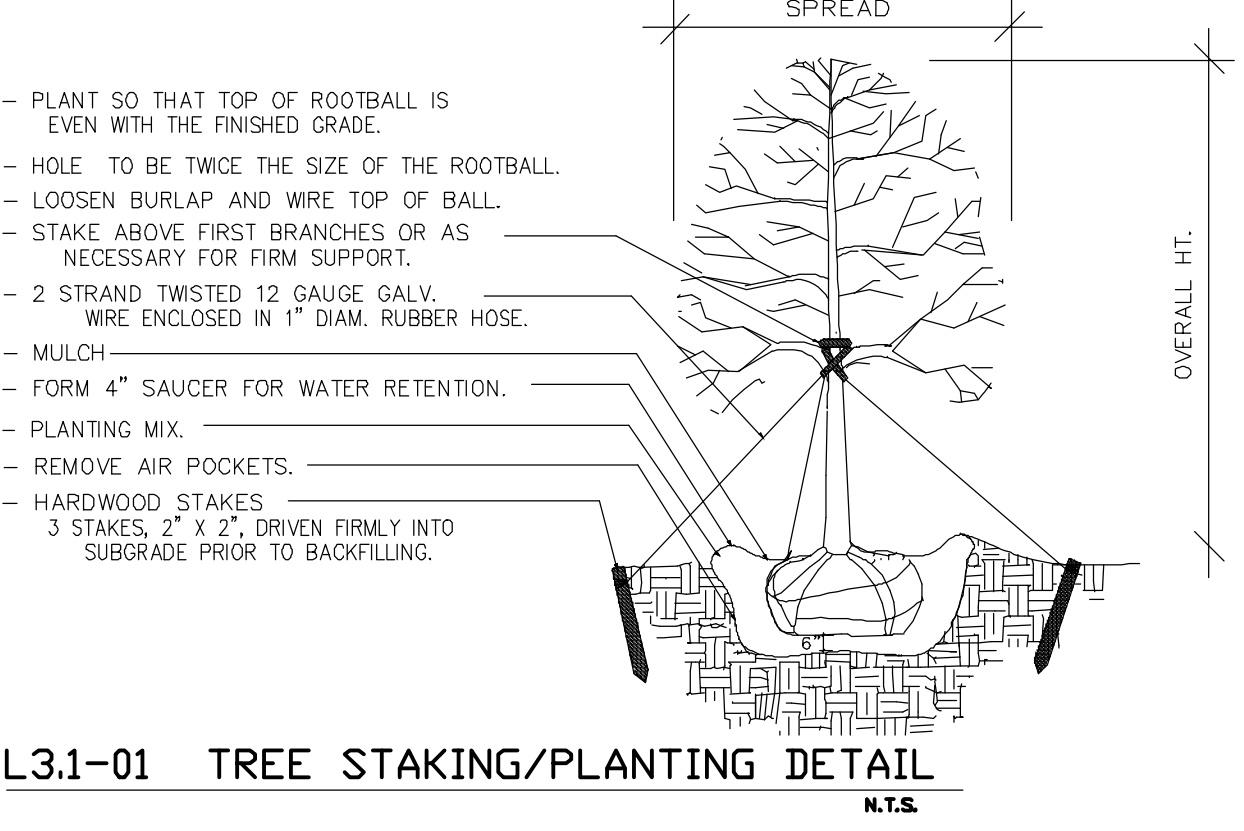
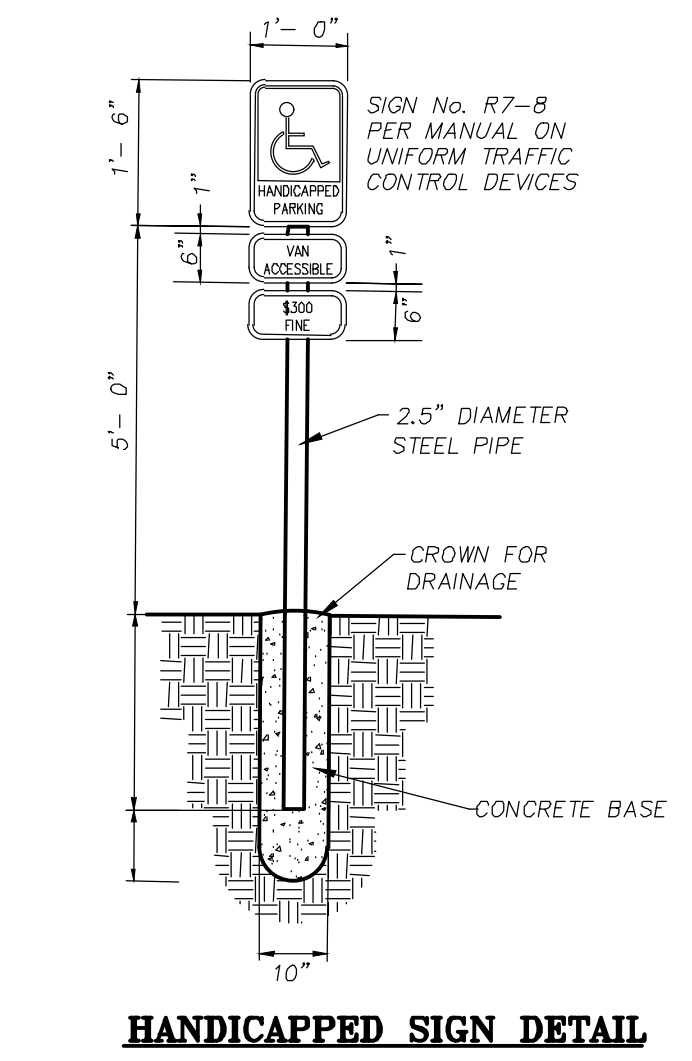
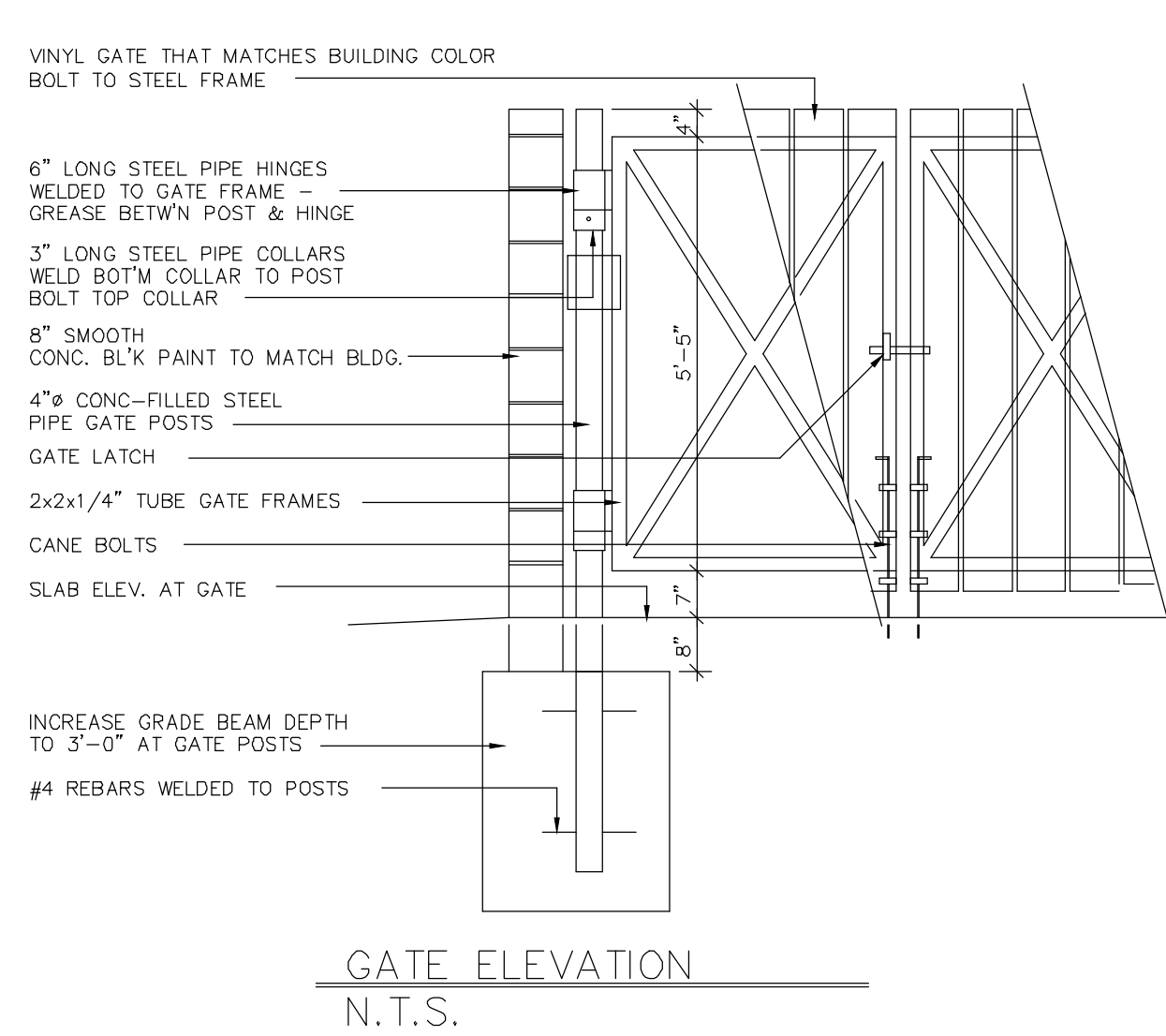
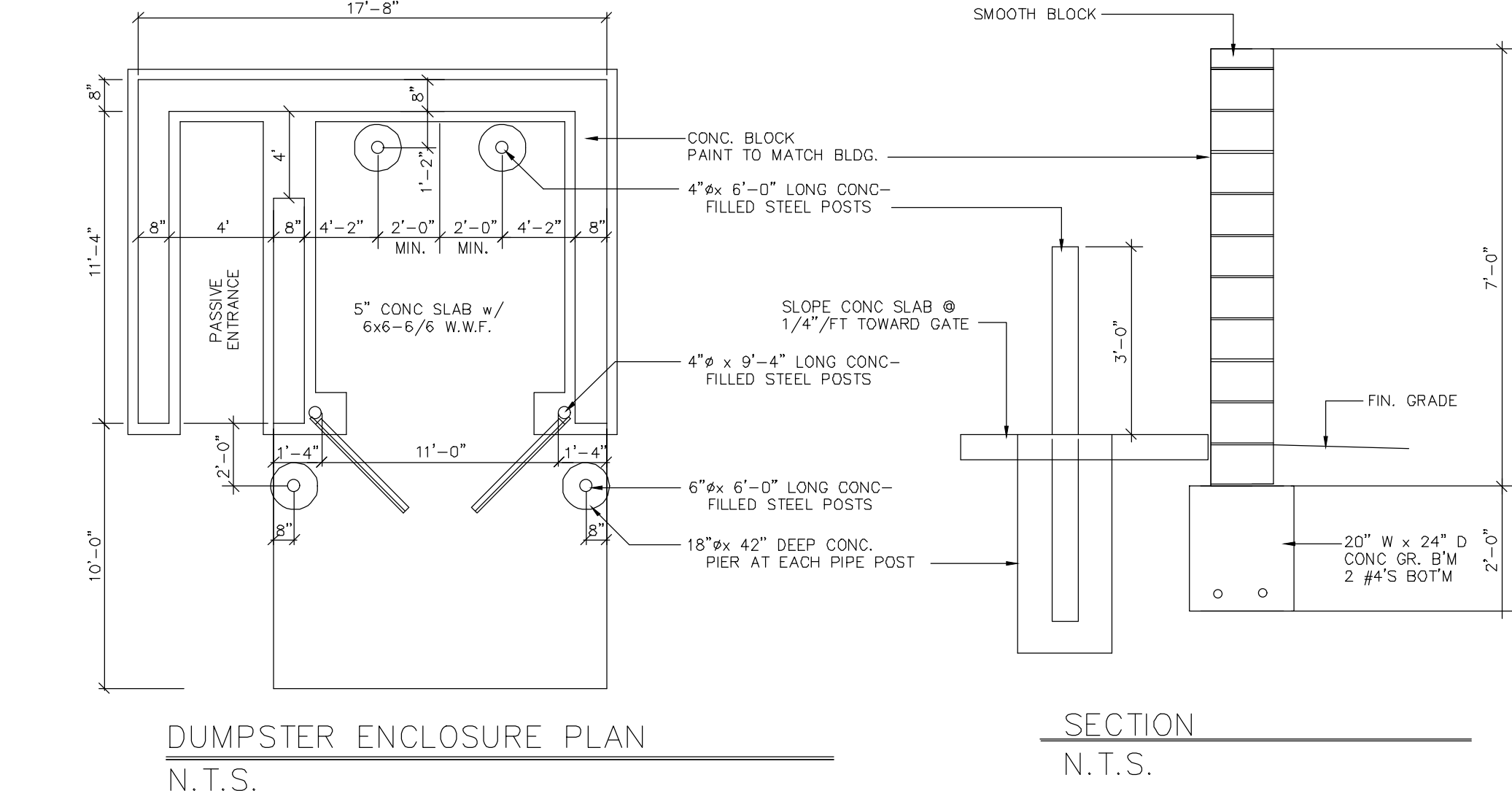
FRAME AND COVER
DIAMETER VARIES
NOT TO SCALE

CONTECH

CS-6
CASCADE SEPARATOR
STANDARD DETAIL

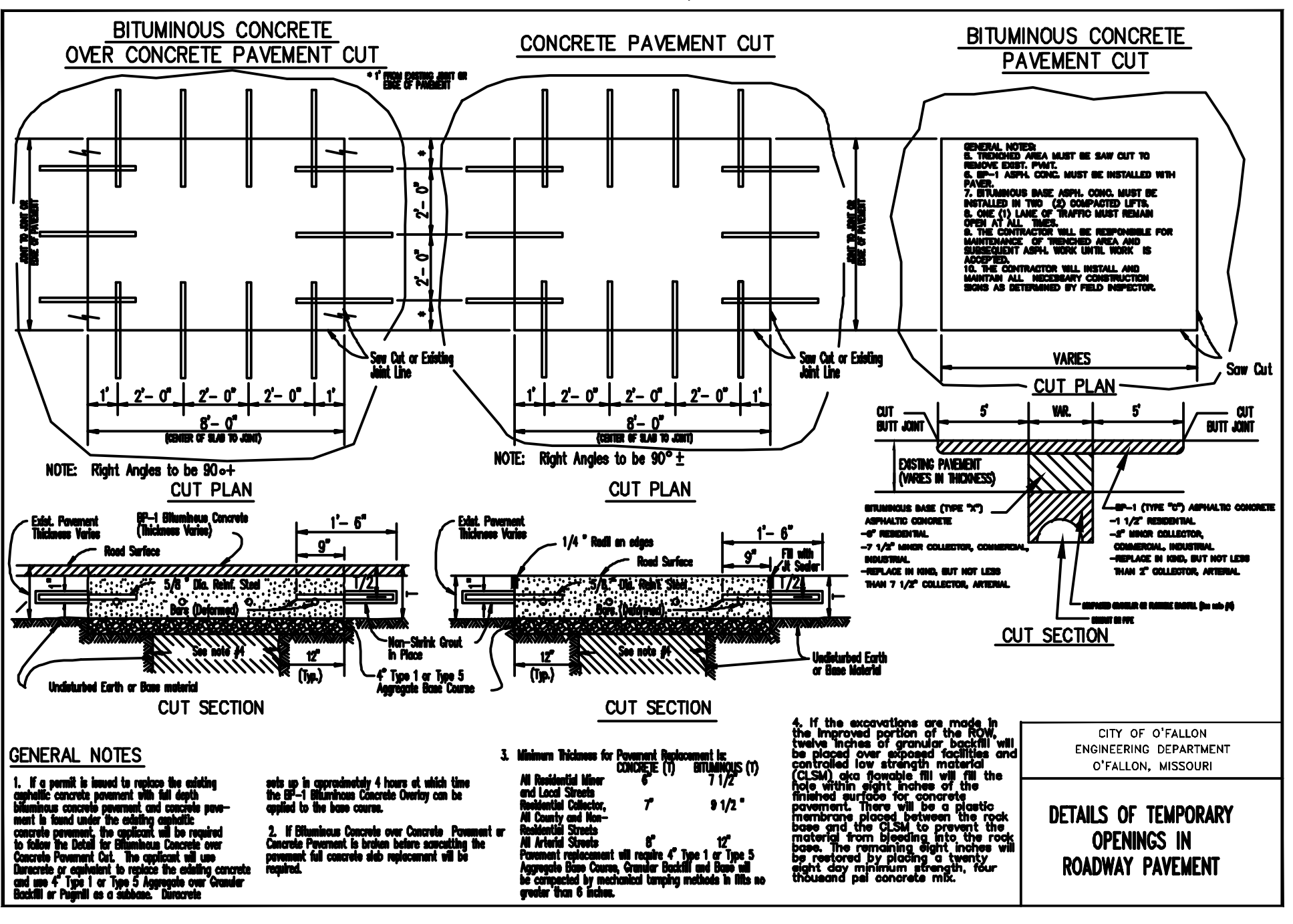
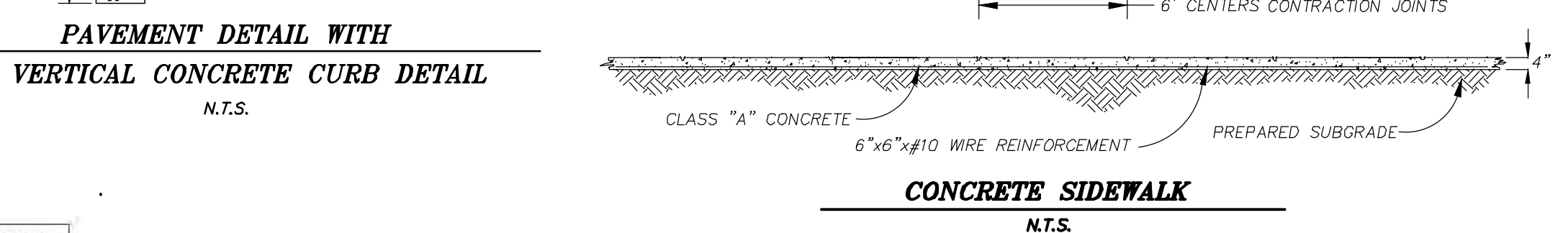
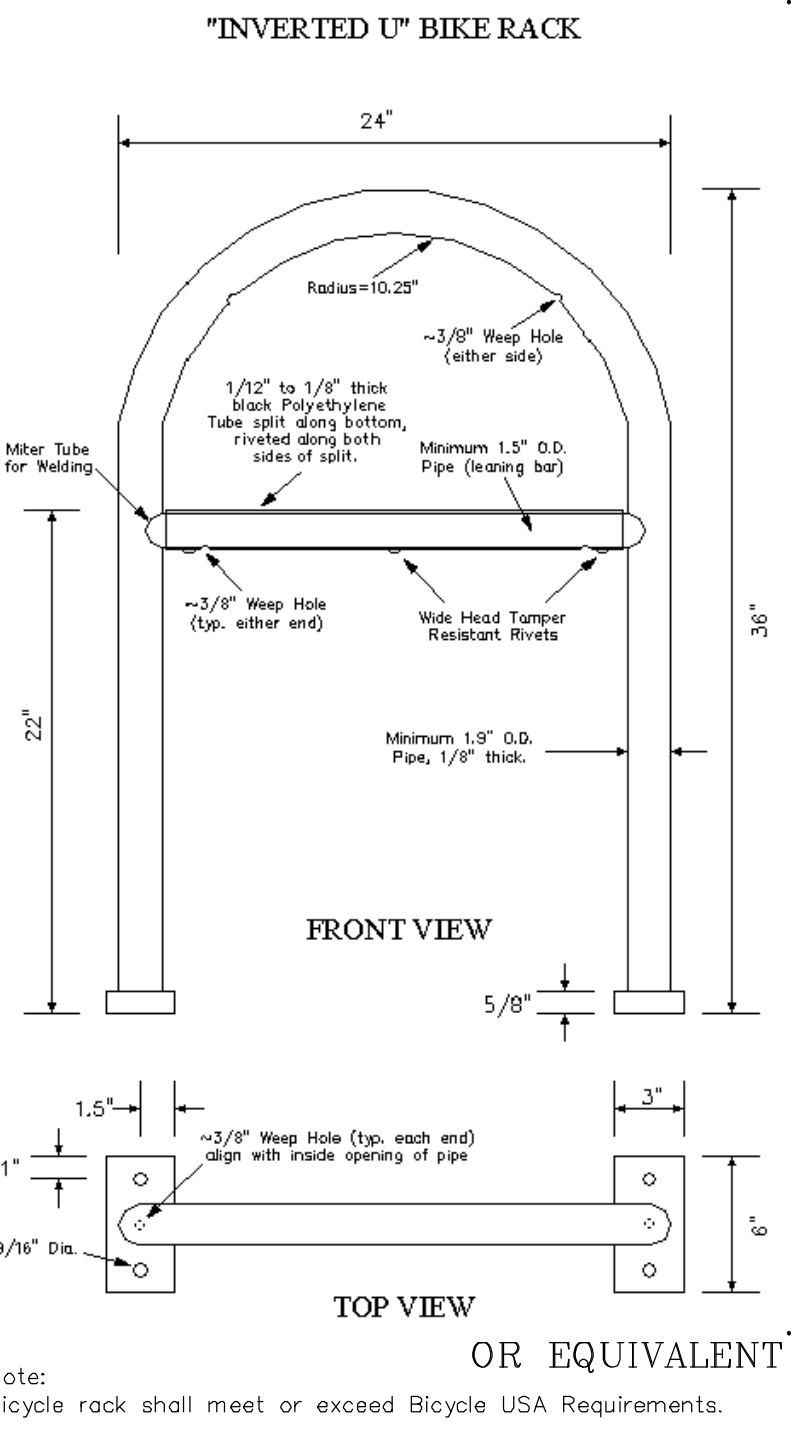


FOR REVIEW PURPOSES ONLY. REFER TO ARCHITECTURAL PLANS FOR ACTUAL DETAIL OF TRASH ENCLOSURE TO BE CONSTRUCTED



LANDSCAPE NOTES

- FINAL TREE SELECTION AND LOCATIONS SHALL BE SHOWN ON THE CONSTRUCTION PLANS.
- ALL TREES SHALL BE PLANTED PER SECTION 402.130 - TREE PLANTING STANDARDS - OF THE CITY OF FALCON MUNICIPAL CODE.
- DECIDUOUS TREES SHALL BE A MINIMUM OF 2" CALIPER AT TIME OF PLANTING.
- CONIFEROUS TREES SHALL BE A MINIMUM OF 6' IN HEIGHT AT TIME OF PLANTING.



LIGHT POLE BASE DETAIL
N.T.S.

NOTE: DIMENSIONS MAY VARY. SEE ELECTRICAL ENGINEERS' SPECIFICATIONS.

PAVEMENT DETAIL WITH 6" VERTICAL CONCRETE CURB DETAIL
N.T.S.

NOTE: DIMENSIONS MAY VARY. SEE ELECTRICAL ENGINEERS' SPECIFICATIONS.

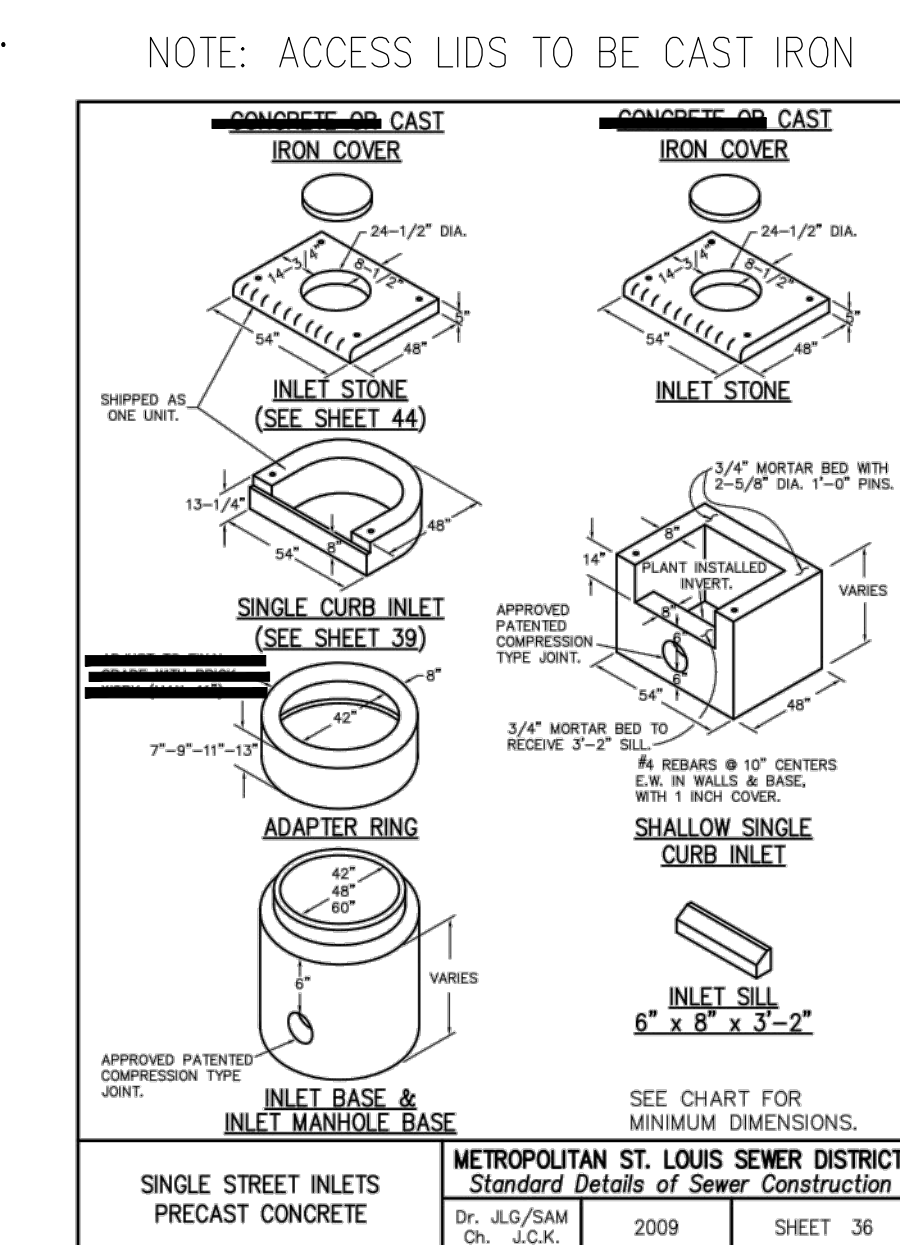
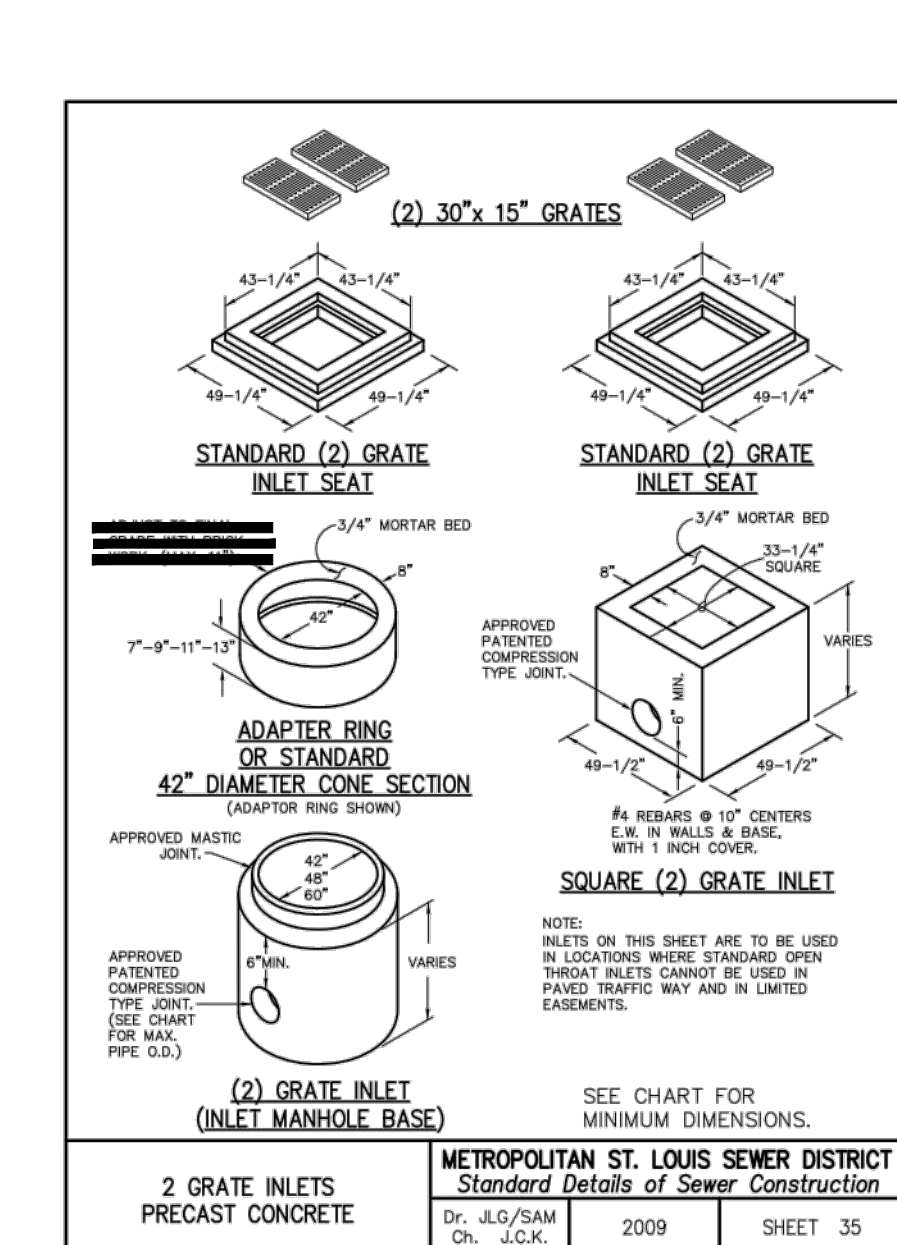
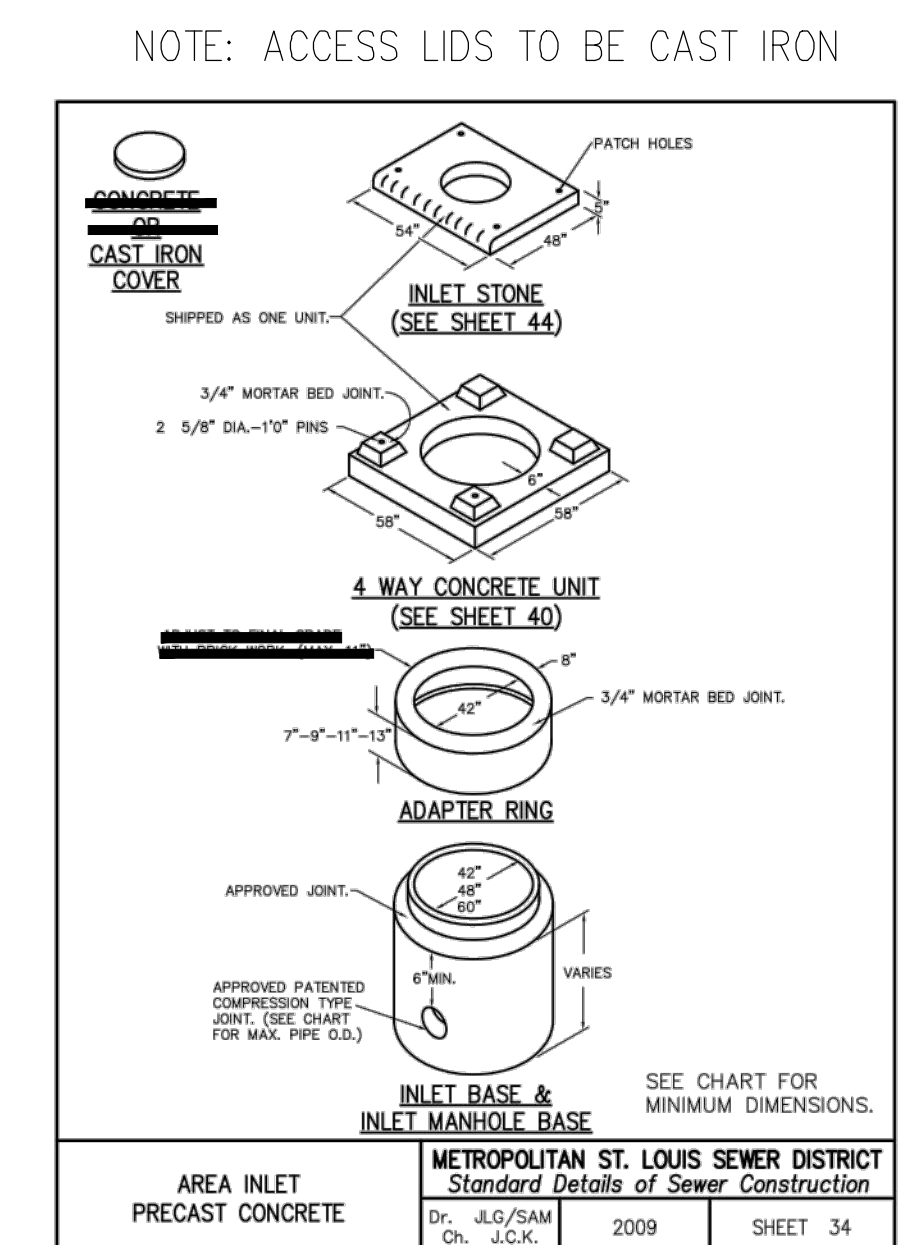
616.8.11 (TA-11) Lane Closure on Two-Lane Highways without Edgelines - MT

SPEED (mph)	SIGN SPACING (ft)	TAPER LENGTH (ft)	OPTIONAL BUFFER LENGTH (ft)	CHANNELIZER SPACING (ft)
25-35	200	-	250	40
40-45	350	-	400	80
50-55	500	-	550	80
60-70	1000	-	840	120

Notes:

- This application may be used as an alternative to the lane closure with flagger (EGP 616.8.10) when all the following conditions exist:
- Two lane highways without edgelines.
- Drivers from both directions are able to see approaching traffic through and beyond the work zone.
- Workers not present.
- Type B flashing warning light may be placed on the ROAD WORK AHEAD sign and the ONE LANE ROAD AHEAD sign whenever a night time closure is necessary.
- If work zone is in place for more than 3 days, a 12-inch wide stop bar shall be installed. Existing conflicting pavement markings and raised pavement markers installed in the activity area and the stop bar shall be removed and temporary pavement markings installed as soon as practical. After the temporary traffic control is removed, the stop bar and other temporary pavement markings shall be removed and the permanent pavement markings restored as soon as practical.
- Additional warning signs shall be erected at each intersection with another state highway within the work zone. Upon the direction of the supervisor, additional warning signs may be erected at other intersections within the work zone.
- If rumble strips are used, review EGP 616.8.8.7 Rumble Strips.
- For loop ramp operations, refer to EGP 616.8.2.2 Flags and Advance Warning Light System.
- See EGP 616.12 Work Zone Speed Limits for speed limit guidelines.

TA-11
10/16



PROJECT TITLE
IMPROVEMENT PLANS
STL WHOLESAL

DETAILS

Pickett Ray & Silver
Civil Engineering & Land Surveying
Beyond Standard

DESIGNER AUTHENTICATION

STATE OF MISSOURI
WILLIAM SCHAFFERT
Professional Engineer
No. PE-2018007869
01/26/2023

Developer / Owner Information
Pinkerton Properties LLC
801 Texas Court
O'Fallon, Missouri 63366

P-Z No. 21-003918
City No. Approved 06-03-2021
Page No.

11 of 12