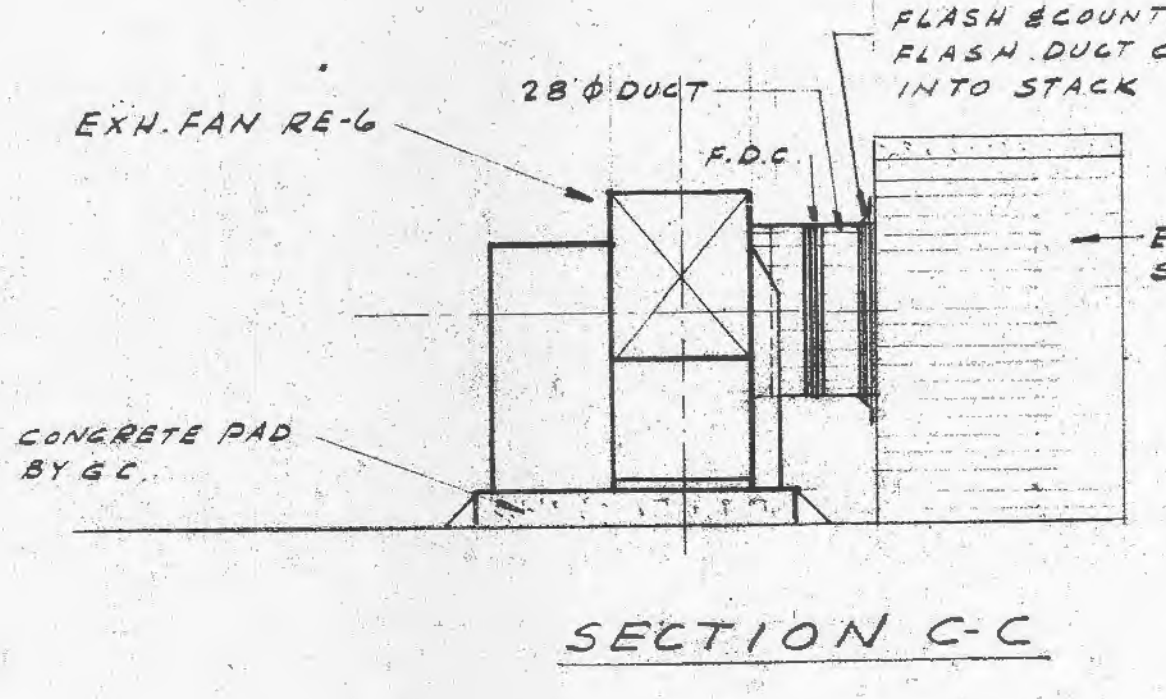
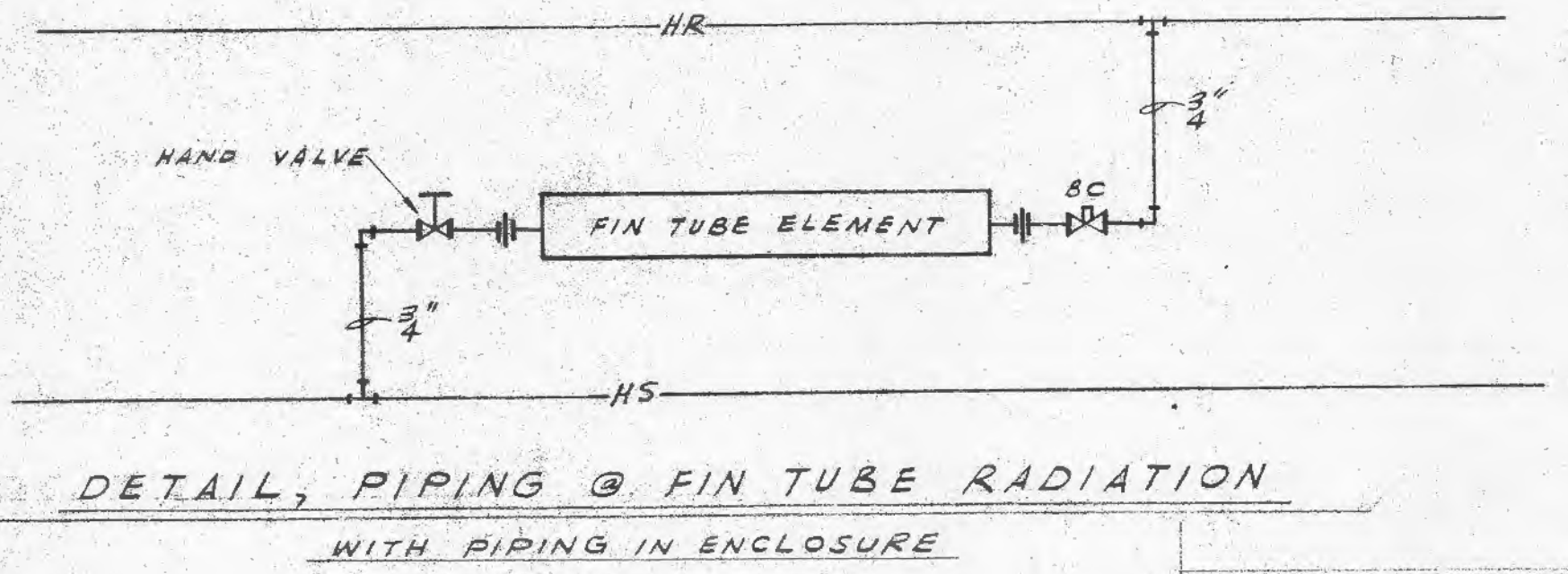
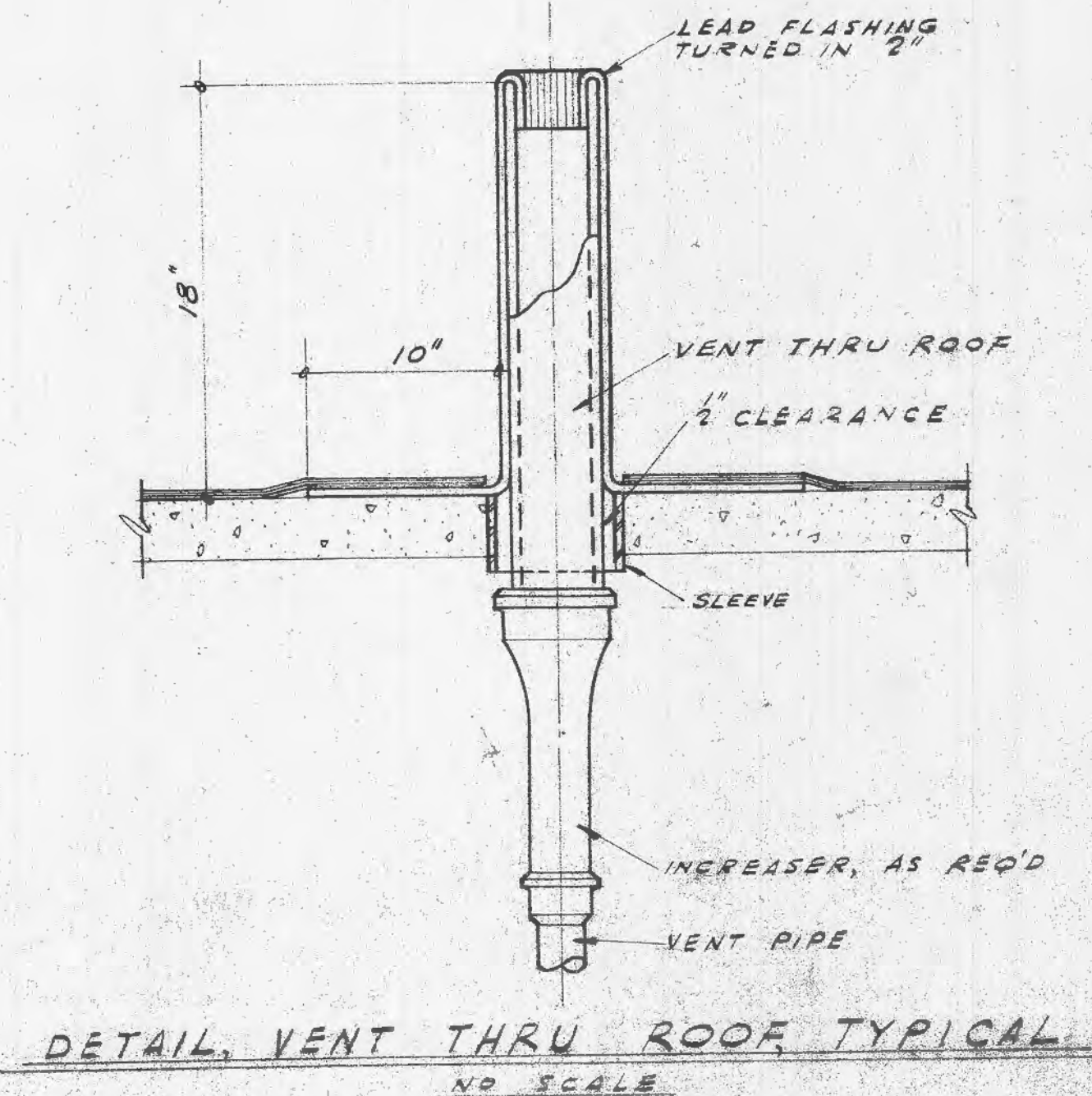


- NOTES**
- 1- EXH. FAN IN CEILING, EMERSON PRYNE 2210C, 16" X 8" DUCT ABOVE CEILING TO LOUVER, 16" X 8"
  - 2- 24" X 12" EXHAUST GRILLE IN CEILING, 12" X 12" DUCT THRU ROOF TO EXHAUST FAN, TYPE RE-2.
  - 3- 10" X 16" DUCT THRU ROOF TO EXH. FAN TYPE RE-5
  - 4- COMBINATION EXHAUST FAN, LIGHT & HEATER IN CEILING, BY E.C. 8" DIA. DUCT THRU ROOF WITH RAIN CAP, BY H.L.
  - 5- 16" X 16" EXHAUST GRILLE IN CEILING, 16" X 16" DUCT THRU ROOF TO EXHAUST FAN TYPE RE-3.
  - 6- 10" X 20" DUCT THRU ROOF TO EXH. FAN TYPE RE-4
  - 7- 12" X 8" 1/2" H.R. DI.
  - 8- 18" H.S. 4" H.R. FROM BELOW



FAN TYPE	CFM	SP	HP	MANUFACTURER	MODEL
RE-1	580	1/2"	1/2	PENN DOMEX	AT-20
RE-2	465	0"	1/2	"	AW-10
RE-3	670	0"	1/2	"	BB-35
RE-4	1340	8"	1/2	"	CA-501
RE-5	600	1/2"	1/2	"	BB-35
RE-6	6400	1/2"	1	AMER. BLOWER	HS270FR
E-7	2200	1"	1/2	"	1GEO
ES-10	4425	0"	1/2	"	1K24
ES-12	5180	0"	1/2	"	2K24

SEE PLANS FOR OTHER FANS

NOTE:  
ALL FANS SHALL HAVE MOTORIZED BACKDRAFT DAMPERS.  
ROOF EXH. FANS SHALL HAVE BUILT IN DISCONNECTS

**SECOND FLOOR PLAN**  
SCALE: 1/8" = 1'-0"

**PARTIAL ROOF PLAN**  
SCALE: 1/8" = 1'-0"

DATE: \_\_\_\_\_

DRAWN BY: C.C.

JOB NO. 3102

REVISIONS: \_\_\_\_\_

**ADDITION TO ST. MARYS INSTITUTE**  
**O'FALLON, MO.**

FOR THE SISTERS OF THE MOST PRECIOUS BLOOD  
MOTHER M. LORENZA, C.PRS., MOTHER GENERAL

**A.F. & ARTHUR STAUDER, ARCHITECTS**  
3608 SOUTH GRAND BLVD. ST. LOUIS 18, MISSOURI  
PAUL LONDE & ASSOC. CONSULTING ENGINEERS

SHEET **M-4**