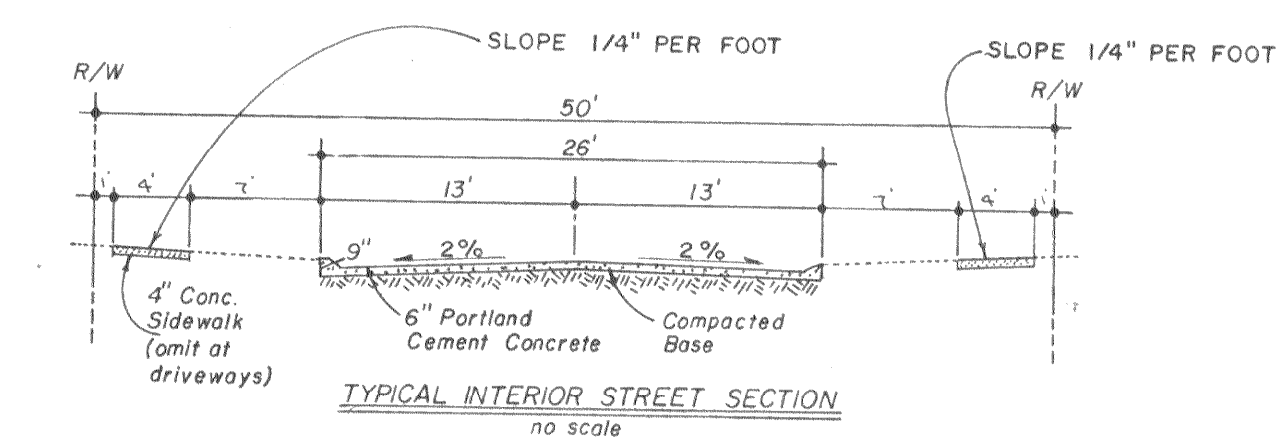


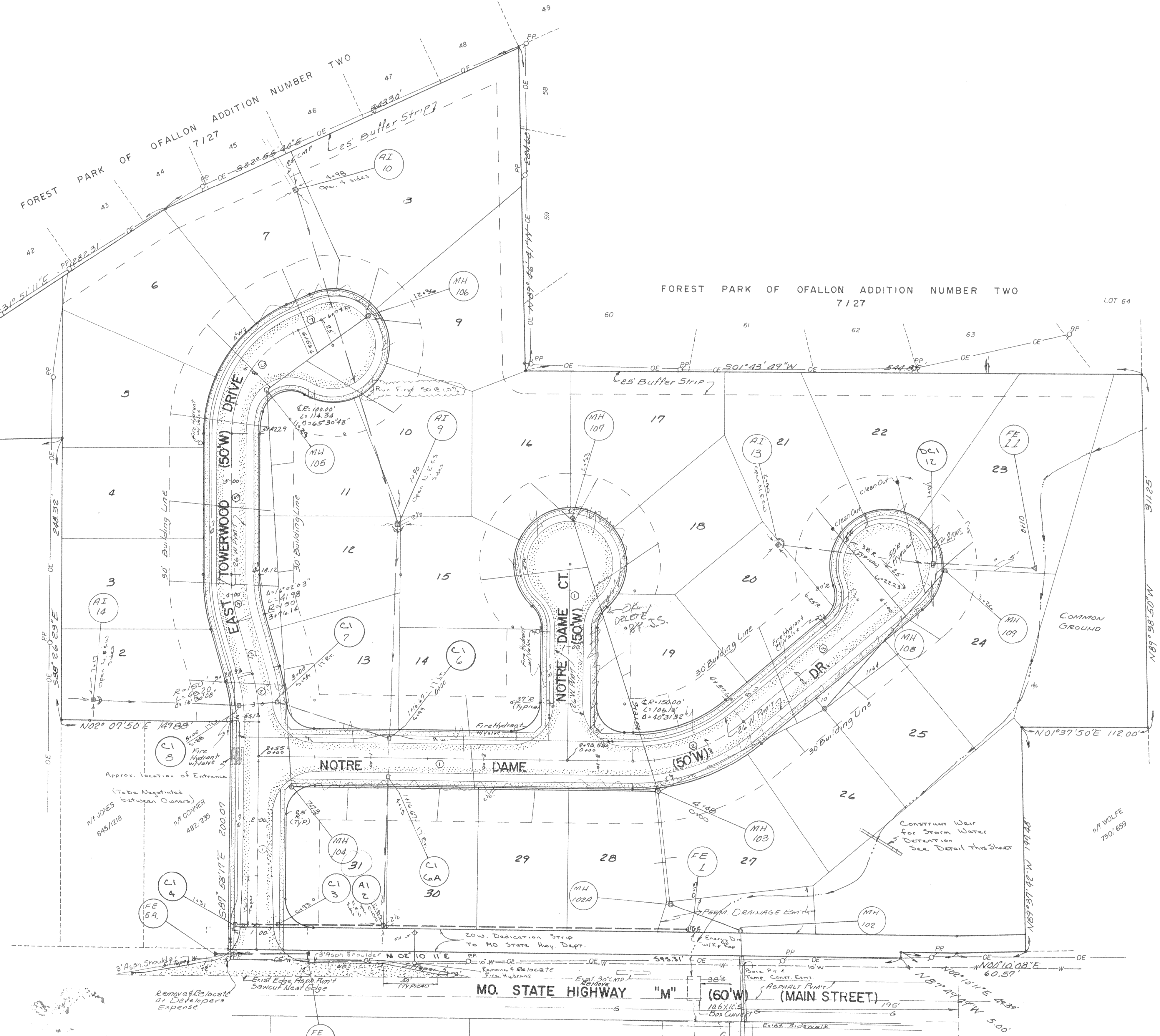
**WEIR DETAIL**

R=141.80'  
Δ=08°48'19"  
L=21.79'



- MATERIALS TO BE USED ON STATE RIGHT OF WAY**
- CONCRETE SURFACE**
- 6 sSack Mix Concrete
  - 8" Concrete
  - 6 x 6 x 6 Steel Mesh (3" below finished grade)
  - 4" Rolled Stone Base
  - Integral Concrete Curb (6" Veri-Steel) (5/8" Steel DOWELS at 2' C C)

**NOTE:**  
Underground utilities and structures have been plotted from available information and therefore, their location must be considered approximate only. It is the responsibility of the individual contractor to notify the utility companies before actual construction.



**CENTERLINE CURVE DATA**

**Notre Dame Drive**

1. S 02°10'11" W L = 331.54'
2. R = 150' Δ = 40°31'32" L = 106.10'
3. S 38°21'21" E L = 184.59'

**Notre Dame Court**

1. S 87°49'49" E L = 172.78'

**Towerwood Drive**

1. S 87°58'17" E L = 200.13'
2. R = 150' Δ = 16°30'08" L = 43.20'
3. N 75°31'34" E L = 47.81'
4. R = 150' Δ = 16°02'03" L = 41.98'
5. S 88°26'23" E L = 124.17'
6. R = 100' Δ = 65°30'43" L = 114.34'
7. S 22°55'40" E L = 22.57'