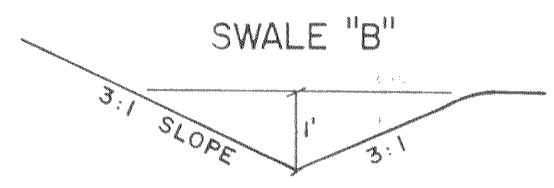
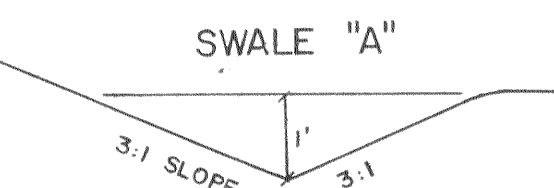
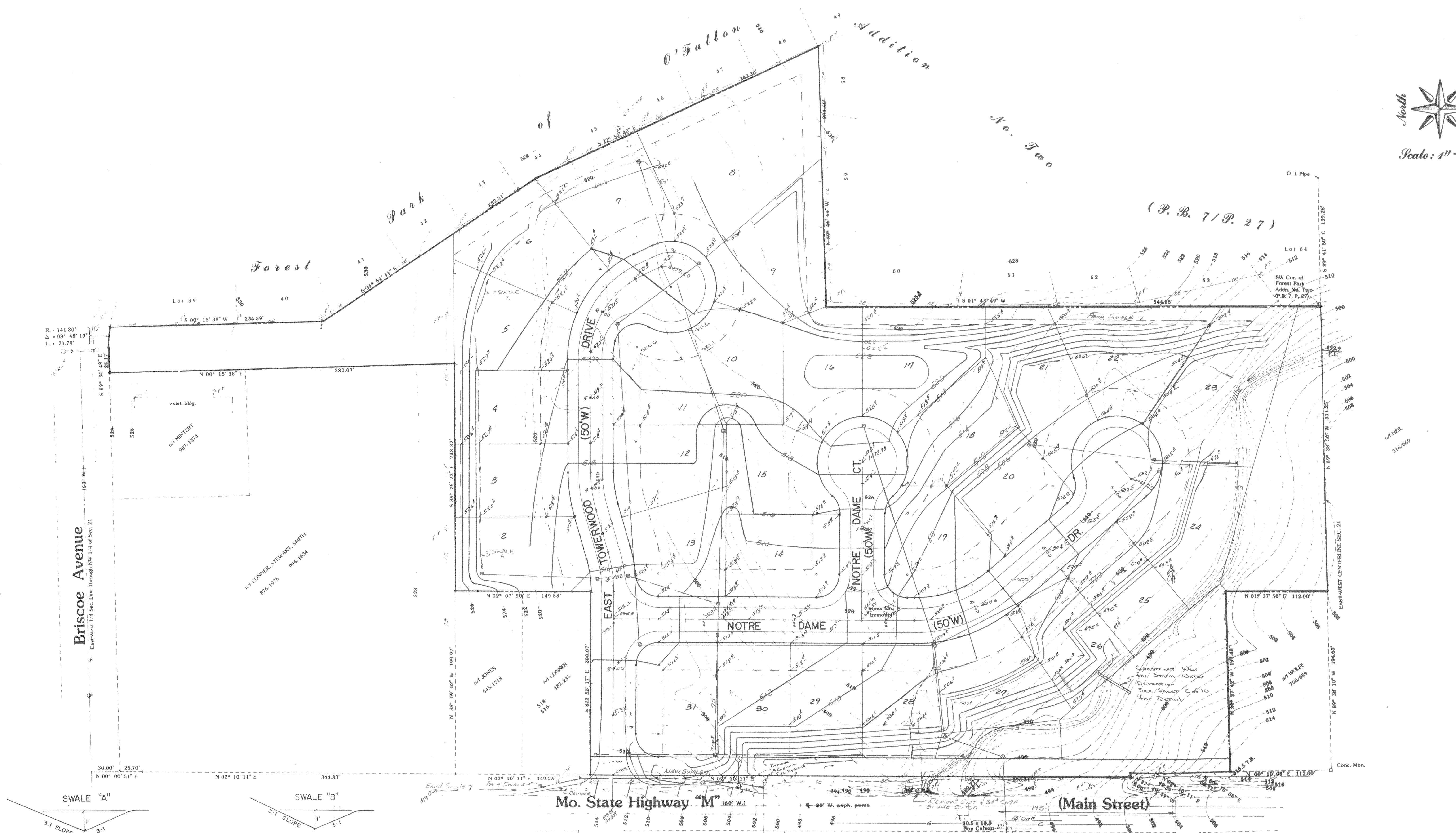


Scale: 1" = 50'



$V = 1.486/n (2/wp)^{2/3} (s)^{1/2}$      $n = .04$   
 $V = 37.15 \times .6085 \times (0.006)^{1/2}$      $s = .6\%$   
 $V = 1.75 \text{ FPS}$   
 $Q = VA$   
 $Q = 1.75 \times 3 = 5.25 \text{ CFS ALLOWABLE}$

$V = 1.486/n (a/wp)^{2/3} (s)^{1/2}$      $n = .04$   
 $V = 37.15 \times .6085 \times (0.0036)^{1/2}$      $s = .36\%$   
 $V = 1.36 \text{ FPS}$   
 $Q = VA$   
 $Q = 1.36 \times 3$   
 $Q = 4.08 \text{ CFS ALLOWABLE}$