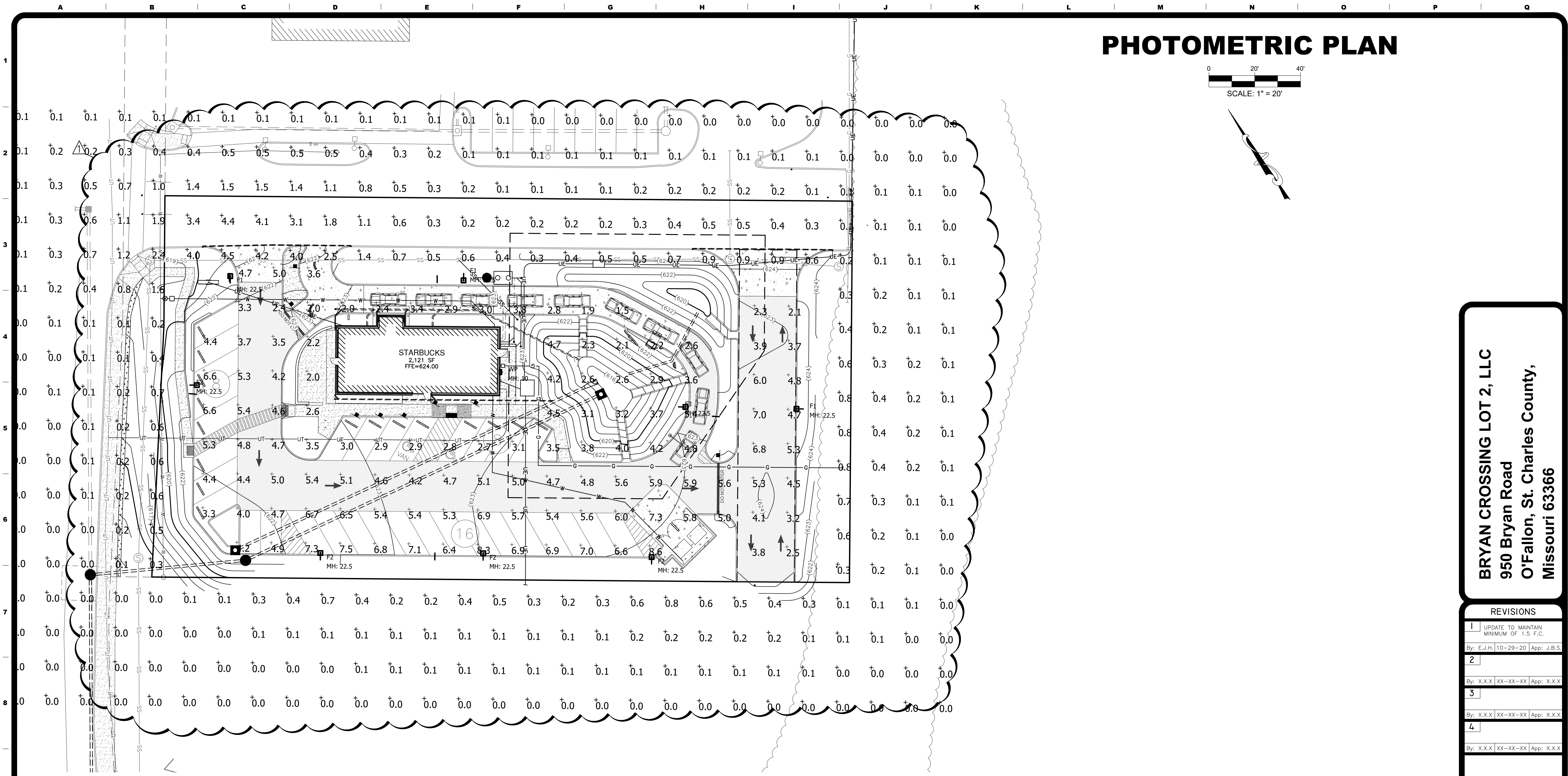
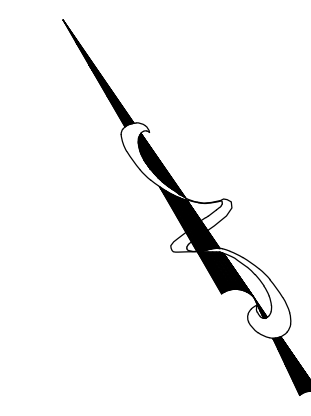
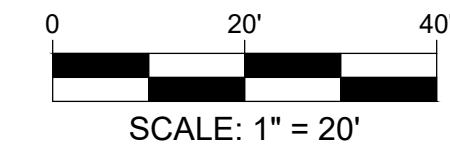


PHOTOMETRIC PLAN



POLE FIXTURES MOUNTED ON 20' POLE & 2.5' BASE
LIGHT LEVELS CALCULATED ON THE GROUND

Calculation Summary							
Label	CalcType	Units	Avg	Max	Min	Avg/Min	Max/Min
SITE	Illuminance	Fc	4.49	8.6	1.5	2.99	5.73
SPILL LIGHT	Illuminance	Fc	0.30	4.5	0.0	N.A.	N.A.

Luminaire Schedule							
Symbol	Qty	Label	Arrangement	Lum. Watts	Total Watts	LLF	Description
	3	F1	SINGLE	172	516	0.900	PRV-XL-PA3A-740-U-T3-HSS
	4	F2	SINGLE	303	1212	0.900	PRV-XL-PA4B-740-U-T4W-HSS
	1	F3	SINGLE	172	172	0.900	PRV-XL-PA3A-740-U-5WQ
	1	WP	SINGLE	66	66	0.900	IST-AF-1200-LED-E1-SL4

DESIGN IS BASED ON CURRENT INFORMATION PROVIDED AT THE TIME OF REQUEST.
ANY CHANGES IN MOUNTING HEIGHT OR LOCATION, LAMP WATTAGE, LAMP TYPE, AND
EXISTING FIELD CONDITIONS, THAT EFFECT ANY OF THE PREVIOUSLY MENTIONED, WILL
VOID CURRENT LAYOUT AND REQUIRE A CHANGE REQUEST AND RECALCULATION.

Three working days prior to the start of any excavation on this site the Contractor shall contact 1-800-344-7463 for utility location information.

The contractor shall verify and implement all the required Federal Occupational Safety and Health Administration (OSHA) and/or OSHA approved state-plan regulations established for the type of construction required by these plans.

BRYAN CROSSING LOT 2, LLC
950 Bryan Road
O'Fallon, St. Charles County,
Missouri 63366

REVISIONS	
1	UPDATE TO MAINTAIN MINIMUM OF 1.5 F.C.
2	
3	
4	

DRAWN
J.A.K.
CHECKED
R.G.R.
DATE
11/30/2020
SCALE
1"=20'
JOB No.
5918
SHEET NAME
PHOTOMETRIC PLAN

Rob Mileham
Lighting Associates, Inc.
3216 S Brentwood Blvd.,
Webster Groves, Mo 63119
C: 630-636-7049
www.laiweb.net

PM-1