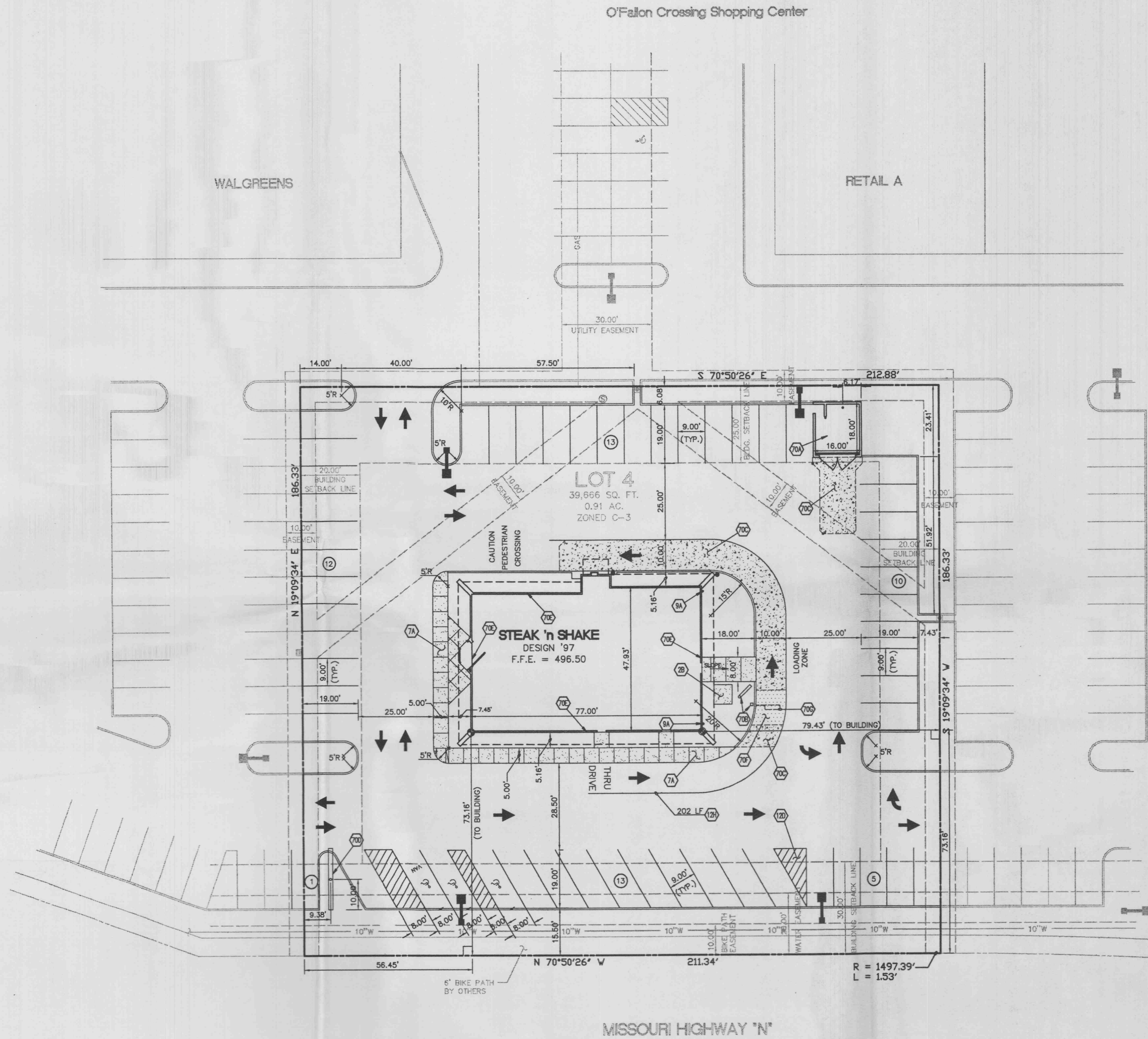


ZONED C-3 (HIGHWAY COMMERCIAL)  
MISSOURI HIGHWAY "K"



O'Fallon Crossing Shopping Center

WALGREENS

RETAIL A

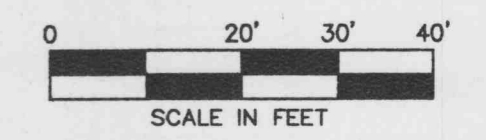
LOT 4  
39,666 SQ. FT.  
0.91 AC.  
ZONED C-3

STEAK 'N SHAKE  
DESIGN '97  
F.F.E. = 496.50

ZONED C-3 (HIGHWAY COMMERCIAL)

MISSOURI HIGHWAY "N"

ZONED C-3 (HIGHWAY COMMERCIAL)



**BENCHMARK**  
"□" ON TRAFFIC LIGHT BASE SOUTHWEST OF SITE AT INTERSECTION OF MISSOURI HIGHWAYS "N" & "K". ELEVATION: 514.25

**LEGEND**

- EXISTING**
- BOUNDARY LINE
  - RIGHT OF WAY LINE
- PROPOSED**
- BOUNDARY LINE
  - RIGHT OF WAY LINE
  - CONCRETE CURB AND GUTTER. SEE DETAIL 1A/7E
  - PROPOSED PARKING SPACES
  - BUILDING CONTROL POINT
  - LIMITS OF SIDEWALKS & CONCRETE APRONS (PER ARCH. PLANS)
  - CURB INLET
- SITE DETAILS**
- ▽ 3C WHEELCHAIR RAMP IN SIDEWALK
  - 10A TRAFFIC FLOW ARROW (TYP.)

**SITE NOTES**

- 2B TRANSFORMER PAD (PER ELEC. CO. AND/OR ARCH. PLANS)
- 7A SIDEWALK (PER ARCH. PLANS)
- 9A DOWN SPOUTS - (TYP.-PER ARCH. PLANS)
- 12D 4" WIDE PAINTED WHITE STRIPES, 2.0' O.C. @ 45° (SEE SIZE INDICATED AT SYMBOL)
- 12H 4" SINGLE TRAFFIC WHITE LANE STRIPE (SEE LENGTH INDICATED AT SYMBOL)
- 70A REFUSE AREA WITH 6" REINFORCED CONCRETE PAD (PER ARCH. PLANS)
- 70B MENU BOARD & SPEAKER POST (BY OTHERS)
- 70C 6" STEEL REINFORCED CONCRETE PAVING
- 70D PYLON SIGN
- 70E FASCIA SIGN WITH LOGO CENTERED ON BUILDING
- 70F 6" NON-REINFORCED CONCRETE SLAB
- 70G VEHICLE DETECTOR LOOP

**GENERAL SITE NOTES**

- A. ALL DIMENSIONS SHOWN ARE TO THE FACE OF CURB UNLESS OTHERWISE NOTED.
- B. ALL LANDSCAPE AND CONCRETE ISLANDS SHALL RECEIVE THE STANDING CURB DETAIL #10 ON SD-1 OF THE ARCH. PLANS, UNLESS OTHERWISE NOTED.
- C. UNLESS OTHERWISE SHOWN, CALLED OUT OR SPECIFIED HEREON OR WITHIN THE SPECIFICATIONS:  
ALL CURB ADJACENT TO ASPHALT PAVING SHALL BE INSTALLED PER DETAIL #10 ON SD-1 OF THE ARCH. PLANS.  
PAVEMENT SHALL BE INSTALLED IN ACCORDANCE WITH DETAIL 8A OVER THE ENTIRE PARKING LOT AREA AND ALL APPROACH DRIVES.  
ALL PARKING LOT STRIPING INCLUDING ACCESSIBLE AND VAN ACCESSIBLE SPACES SHALL BE PAINTED PER DETAIL 9B & 9J
- D. CONTRACTOR TO MATCH EXISTING SITE WORK OF SURROUNDING DEVELOPMENT. IF NOT IN PLACE, CONTRACTOR TO STOP AT PROPERTY LINE AS SHOWN ON PLANS.

**ACREAGE SUMMARY**

In ACRES	
STEAK 'N SHAKE	0.91
SHOPPING CENTER	15.98
<b>TOTAL SITE</b>	<b>16.89</b>

**PARKING RATIO**

BUILDING SQ.FT.	NO. OF SPACES	RATIO
STEAK 'N SHAKE	3670	57 REQUIRED 20 + 1/100 SF 54 PROVIDED 20 + .83/100 SF

**SITE COVERAGE**  
(not to exceed 30%)  
9.88%

NOTE:  
SEE ARCHITECTURAL PLANS FOR EXACT LOCATIONS AND DIMENSIONS OF PORCHES, RAMPS, VESTIBULE, SLOPED PAVING, TRUCK DOORS, BUILDING UTILITY ENTRANCE LOCATIONS AND PRECISE BUILDING DIMENSIONS.

INITIAL DESIGN	11-8-96	JDG	BLM	JAC	JAC
	DATE	PRN	PM	DES	DRW

**STEAK 'N SHAKE RESTAURANT**



110 W. Central Ave. Bentonville, AR 72712		(501) 273-9472 FAX (501) 273-0844	JOB NO.: 12424.0 DWG NAME: 2424PROJ
<b>SITE PLAN</b> MISSOURI HIGHWAYS "N" AND "K" O'FALLON, MISSOURI		DATE 02-05-97 2:32 PM	SHEET NO. 3 OF 9

