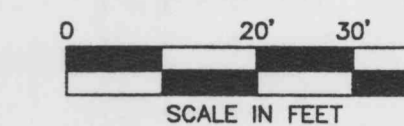


O'Fallon Crossing Shopping Center

WALGREENS

RETAIL A



BENCHMARK
"□" ON TRAFFIC LIGHT BASE SOUTHWEST OF SITE AT INTERSECTION OF MISSOURI HIGHWAYS "N" & "K". ELEVATION: 514.25

LEGEND

- EXISTING**
- BOUNDARY LINE
 - RIGHT OF WAY LINE
- PROPOSED**
- BOUNDARY LINE
 - RIGHT OF WAY LINE
 - STORM DRAIN
 - X-W- WATER SERVICE
 - X-S- SANITARY SEWER SERVICE
 - X-G- GAS SERVICE
 - UGE&T- UNDERGROUND ELECTRIC AND TELEPHONE SERVICE

GENERAL UTILITY NOTES

- A. ALL WATER LINES SHALL BE PVC 1-1/2" WITH 1'-0" MIN. COVER.
- B. ALL SANITARY SEWER LINES SHALL BE 6" PVC WITH 1'-0" MIN. COVER.
- C. CONTRACTOR SHALL COORDINATE ANY DISRUPTIONS TO EXISTING UTILITY SERVICES WITH ADJACENT PROPERTY OWNERS.
- D. ALL ELECTRIC, TELEPHONE AND GAS EXTENSIONS INCLUDING SERVICE LINES SHALL BE CONSTRUCTED TO THE APPROPRIATE UTILITY COMPANY SPECIFICATIONS. ALL UTILITY DISCONNECTIONS SHALL BE COORDINATED WITH THE DESIGNATED UTILITY COMPANIES.
- E. CONSTRUCTION SHALL NOT START ON ANY PUBLIC UTILITY SYSTEM UNTIL WRITTEN APPROVAL HAS BEEN RECEIVED BY THE ENGINEER FROM THE APPROPRIATE GOVERNING AUTHORITY AND CONTRACTOR HAS BEEN NOTIFIED BY THE ENGINEER.
- F. PRIOR TO THE CONSTRUCTION OF OR CONNECTION TO ANY STORM DRAIN, SANITARY SEWER, WATER MAIN OR ANY OF THE DRY UTILITIES, THE CONTRACTOR SHALL EXCAVATE, VERIFY AND CALCULATE ALL POINTS OF CONNECTION AND ALL UTILITY CROSSINGS AND INFORM CD ENGINEERING AND THE OWNER/DEVELOPER OF ANY CONFLICT OR REQUIRED DEVIATIONS FROM THE PLAN. NOTIFICATION SHALL BE MADE A MINIMUM OF 48 HOURS PRIOR TO CONSTRUCTION. CD ENGINEERING AND ITS CLIENTS SHALL BE HELD HARMLESS IN THE EVENT THAT THE CONTRACTOR FAILS TO MAKE SUCH NOTIFICATION.
- G. UNLESS OTHERWISE SHOWN, CALLED OUT OR SPECIFIED HEREON OR WITHIN SPECIFICATIONS:
 - ALL SANITARY SEWER PIPE BEDDING SHALL BE INSTALLED PER DETAIL 42B.
- H. CONTRACTOR TO MATCH EXISTING UTILITIES OF SURROUNDING AREA. IF NOT IN PLACE, CONTRACTOR TO STOP AT PROPERTY LINE AS SHOWN ON PLANS.

UTILITY NOTES

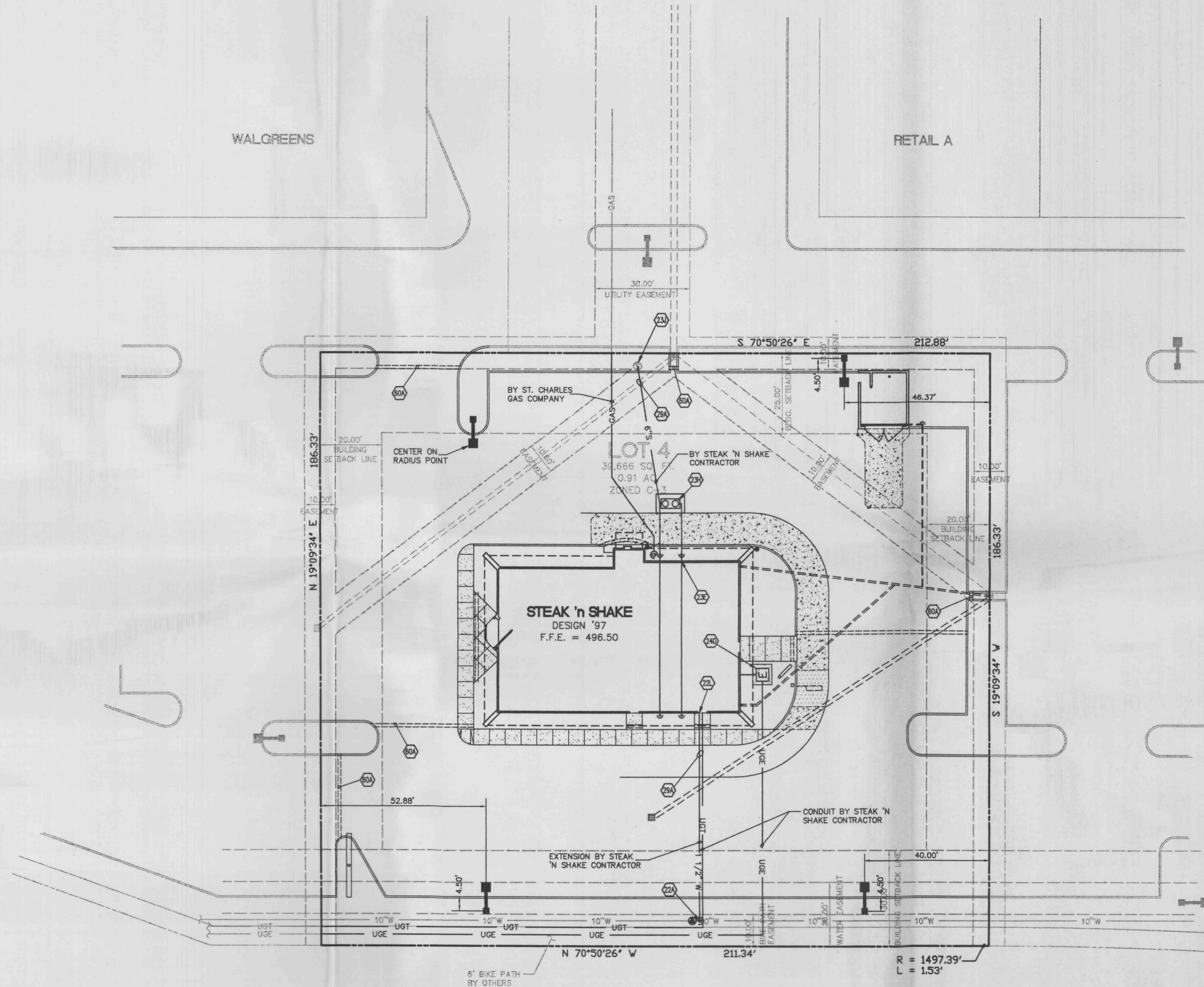
- 22A POINT OF CONNECTION - WATER SERVICE (PER LOCAL CODES)
- 22L METERED DOMESTIC WATER SERVICE ENTRY PER ARCH. PLANS (SEE SIZE THIS SHEET)
- 22M PROPOSED 1" WATER METER BY GENERAL CONTRACTOR
- 23B SANITARY SEWER CLEAN-OUT (PER LOCAL CODES)
- 23C BUILDING SANITARY SEWER SERVICE CLEAN-OUT
- 23E SANITARY SEWER SERVICE ENTRY (PER ARCH. PLANS)
- 23H GREASE TRAP WITH CLEAN-OUT (PER ARCH. PLANS)
- 23J CONNECT TO EXISTING SANITARY SEWER MANHOLE
- 24D PROPOSED ELECTRIC TRANSFORMER
- 27C PROPOSED GAS METER
- 28A MAINTAIN MIN. 18" VERTICAL SEPARATION.
- 60A SCHEDULE 40 PVC CONDUIT FOR IRRIGATION BY GENERAL CONTRACTOR. CONDUIT SHALL BE TWICE THE DIAMETER OF THE IRRIGATION SYSTEM. CONTRACTOR SHALL COORDINATE WITH LANDSCAPE AND IRRIGATION PLANS.
- 61B 1 1/2" IRRIGATION METER BY GENERAL CONTRACTOR

ZONED C-3 (HIGHWAY COMMERCIAL)
MISSOURI HIGHWAY "K"

ZONED C-3 (HIGHWAY COMMERCIAL)

MISSOURI HIGHWAY "N"

ZONED C-3 (HIGHWAY COMMERCIAL)



NOTE:
SEE ARCHITECTURAL PLANS FOR EXACT LOCATIONS AND DIMENSIONS OF PORCHES, RAMPS, VESTIBLES, SLOPED PAVING, TRUCK DOORS, BUILDING UTILITY ENTRANCE LOCATIONS AND PRECISE BUILDING DIMENSIONS.

INITIAL DESIGN	11-8-96	JDC	SLM	JAC	JAC
DATE	PRN	PM	DES	DRW	
STEAK 'N SHAKE RESTAURANT					
CEI ENGINEERING ASSOCIATES, INC					
ENGINEERS PLANNERS SURVEYORS					
110 W. Central Ave. Bentonville, AR 72712		(501) 273-9472 FAX (501) 273-0844		JOB NO.: 12424.0 DWG NAME: 2424PROJ	
UTILITY PLAN			DATE	SHEET NO.	
MISSOURI HIGHWAYS "N" AND "K"			02-05-97	5 OF 9	
O'FALLON, MISSOURI			2:32 PM	R8	

