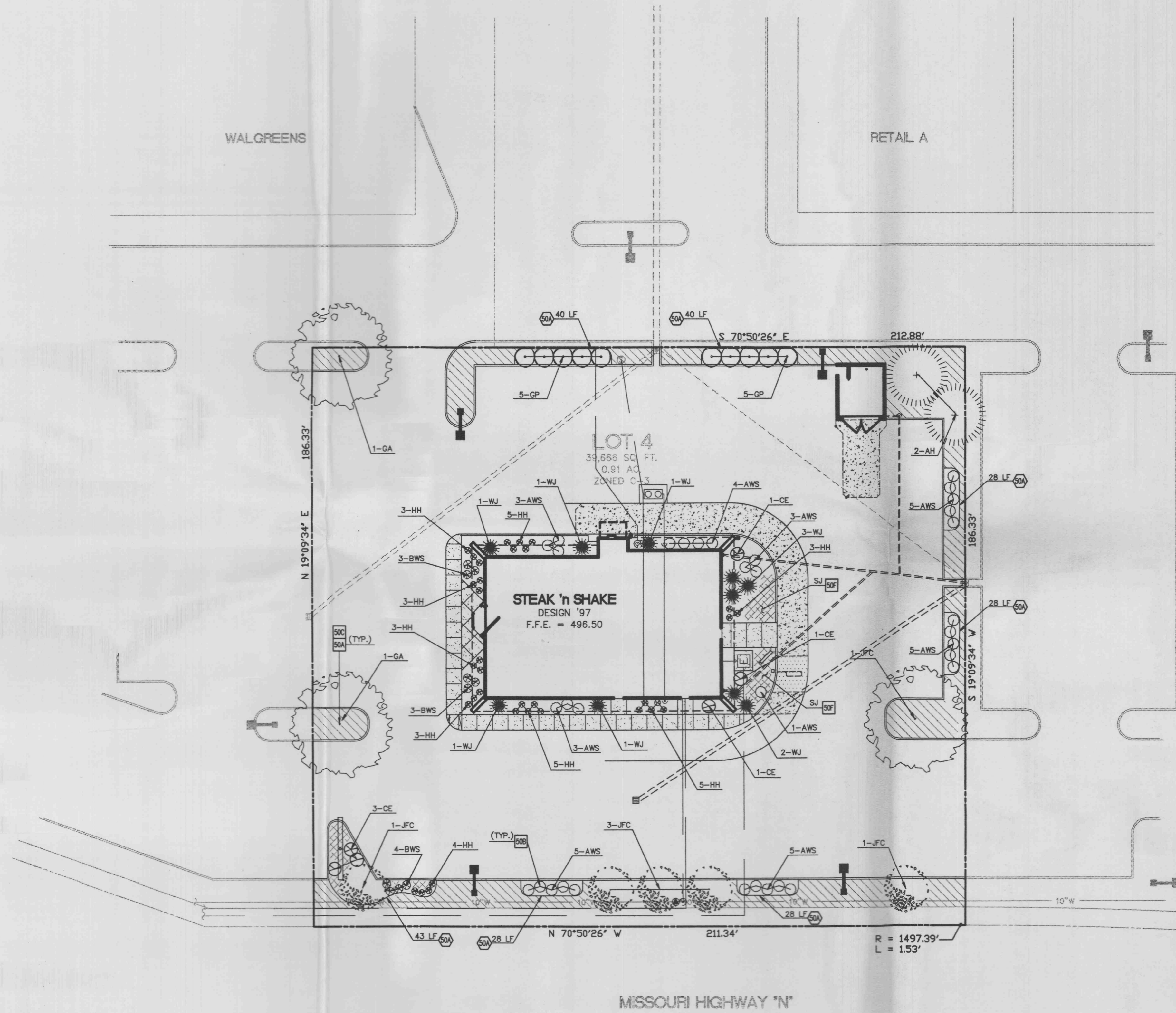


ZONED C-3 (HIGHWAY COMMERCIAL)
MISSOURI HIGHWAY "K"

O'Fallon Crossing Shopping Center

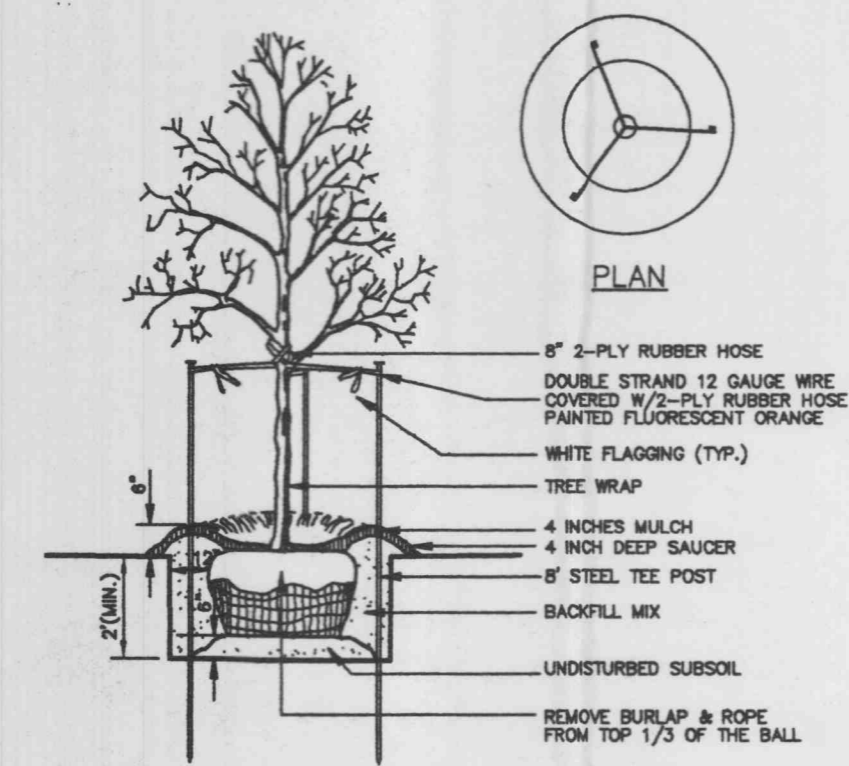
WALGREENS

RETAIL A



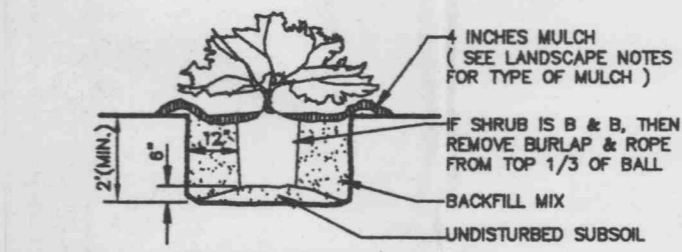
MISSOURI HIGHWAY "N"

ZONED C-3 (HIGHWAY COMMERCIAL)



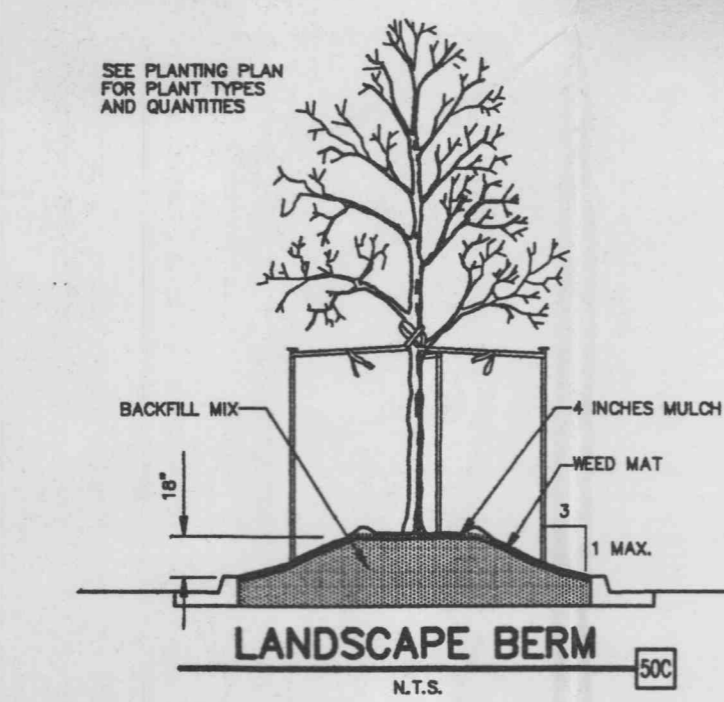
NOTE: SEE LANDSCAPE NOTES FOR THE TYPE OF MULCH MATERIAL TO USE.

TREE PLANTING
N.T.S.

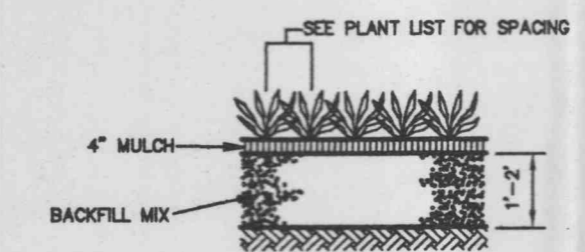


SHRUB PLANTING
N.T.S.

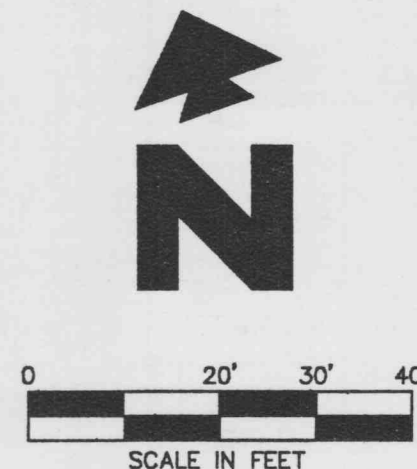
ZONED C-3 (HIGHWAY COMMERCIAL)



LANDSCAPE BERM
N.T.S.



GROUND COVER PLANTING
N.T.S.



BENCHMARK
"□" ON TRAFFIC LIGHT BASE SOUTHWEST OF SITE AT INTERSECTION OF MISSOURI HIGHWAYS "N" & "K". ELEVATION: 514.25

LEGEND

EXISTING

- BOUNDARY LINE
- RIGHT OF WAY LINE
- STORM DRAIN
- PENNLAWN FESCUE 500
- SHORE JUNIPER (SEE PLANT LIST)

PROPOSED

- BOUNDARY LINE
- RIGHT OF WAY LINE
- STORM DRAIN
- PENNLAWN FESCUE 500
- SHORE JUNIPER (SEE PLANT LIST)

GENERAL LANDSCAPE NOTES

- LOCATE ALL UTILITIES AND SITE LIGHTING CONDUITS BEFORE LANDSCAPE CONSTRUCTION BEGINS.
- NOTIFY LANDSCAPE ARCHITECT OR DESIGNATED REPRESENTATIVE OF ANY LAYOUT DISCREPANCIES PRIOR TO ANY PLANTING.
- ALL DISTURBED AREAS AS DESIGNATED ON THE GRADING PLAN SHALL BE SOWN WITH PENNLAWN FESCUE 500.
- FERTILIZE ALL PLANTS AT THE TIME OF PLANTING WITH TIME RELEASE FERTILIZER.
- SEE GRADING PLAN FOR APPLICATION OF TOPSOIL AND MAINTENANCE OF SOODED AREAS.
- SPRINKLED HARDWOOD MULCH SHALL BE USED AS A FOUR INCH (4") TOP DRESSING IN ALL PLANT BEDS AND AROUND ALL TREES. SINGLE TREES OR SHRUBS SHALL BE MULCHED TO THE OUTSIDE EDGE OF THE SAUCER OR LANDSCAPE ISLAND (SEE PLANTING DETAILS).
- SEE IRRIGATION PLAN FOR APPLICATION OF WATERING OPERATIONS.

LANDSCAPE DETAILS

- 50A TREE PLANTING (TYP.)
- 50B SHRUB PLANTING (TYP.)
- 50C LANDSCAPE BERM TYPICAL IN ALL LANDSCAPE ISLANDS AND BEDS
- 50F GROUND COVER PLANTING

LANDSCAPE NOTES

- 50A STEEL EDGING

PLANT LIST

KEY	QTY	COMMON NAME/ BOTANICAL NAME	ROOT	SIZE	REMARKS
GA	3	GREEN ASH <i>Fraxinus pennsylvanica</i> 'Marshall Seedling'	B&B	2" CAL	6'-10'
AH	2	AMERICAN HOLLY <i>Ilex Opaca</i>	B&B	2" CAL	6'-8'
JFC	5	JAPANESE FLOWERING CHERRY <i>Prunus serrulata</i>	B&B	1 1/2" CAL	6'-8'
WJ	10	WELCH JUNIPER <i>Juniperus scopulorum</i> 'Welch'	CONT.	5 GAL	AS SHOWN
AWS	34	ANTHONY WATERER SPIREA <i>Spiraea x Burmalide</i>	CONT.	5 GAL	4" O.C.
CE	8	COTONEASTER <i>Cotoneaster glaucocephalus</i>	CONT.	5 GAL	AS SHOWN
BWS	10	BRIDAL WREATH SPIREA <i>Spiraea prunifolia</i>	CONT.	3 GAL	4" O.C.
HH	34	HELLER HOLLY <i>Ilex ornata</i> 'Heller'	CONT.	3 GAL	3" O.C.
GP	10	GOLDEN PIVET <i>Ligustrum Vicaryi</i>	CONT.	5 GAL	6" O.C.
SJ	34	SHORE JUNIPER <i>Juniperus horizontalis</i>	CONT.	3 GAL	50% COVERAGE IN 2 YRS.

LANDSCAPE REQUIREMENTS

TOTAL LF. STREET FRONTAGE	210
TOTAL # OF TREES REQUIRED (1/40LF)	5.25
TOTAL # OF TREES PROVIDED	5
TOTAL SF. OPEN SPACE	6,600
TOTAL # OF TREES REQUIRED (1/3,000SF)	2.20
TOTAL # OF TREES PROVIDED	5
GRAND TOTAL # OF TREES PROVIDED	10
TOTAL SF. INTERIOR PARKING	14,580
TOTAL SF. LANDSCAPING REQUIRED (6% MIN.)	875
TOTAL SF. LANDSCAPING PROVIDED (19.5% MIN.)	2,845

NOTE: SEE ARCHITECTURAL PLANS FOR EXACT LOCATIONS AND DIMENSIONS OF PORCHES, RAMPS, VESTIBULES, SLOPED PAVING, TRUCK DOORS, BUILDING UTILITY ENTRANCE LOCATIONS AND PRECISE BUILDING DIMENSIONS.

INITIAL DESIGN	11-8-96	JDG	BLM	JAC	JAC
DATE	PRN	PM	DES	DRW	

STEAK 'N SHAKE RESTAURANT

CEI ENGINEERING ASSOCIATES, INC.
ENGINEERS PLANNERS SURVEYORS

110 W. Central Ave. (501) 273-9472 JOB NO.: 12424.0
Bentonville, AR 72712 FAX (501) 273-0844 DWG NAME: 2424PROJ

LANDSCAPE PLAN DATE 02-05-97 SHEET NO. 6 OF 9
MISSOURI HIGHWAYS "N" AND "K" 2:32 PM RS
O'FALLON, MISSOURI

Copyright 1998 by CEI Engineering Assoc., Inc.