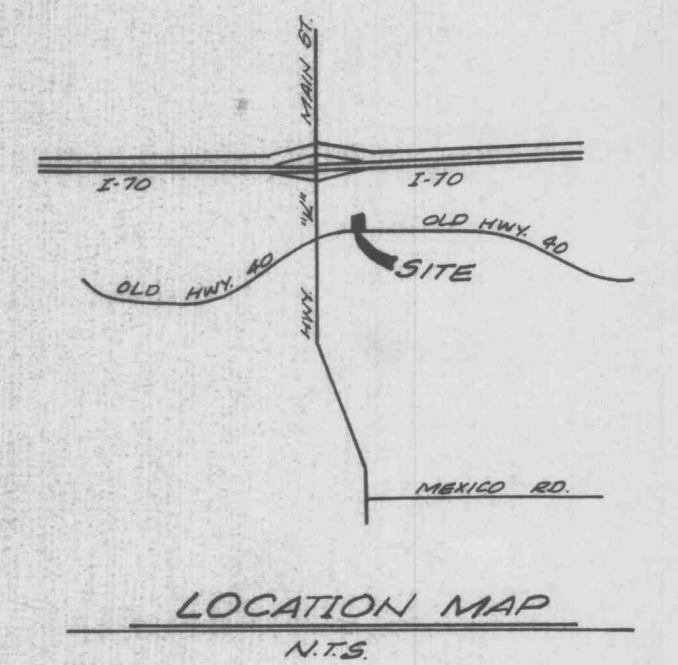


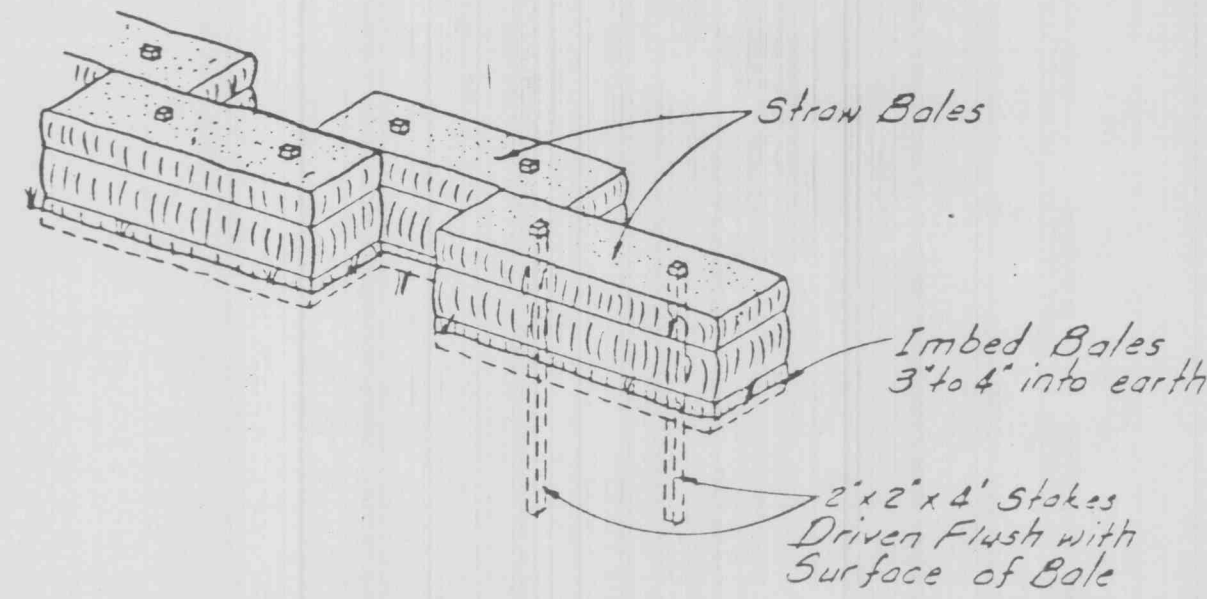
GENERAL NOTES

- Underground utilities have been plotted from available information and therefore their locations shall be considered approximate only. The verification of the location of all underground utilities, either shown or not shown on these plans shall be the responsibility of the contractor, and shall be located prior to any grading or construction of the improvements.
- All filled places, including trench backfills, under buildings, proposed storm and sanitary sewer lines and/or paved areas, shall be compacted to 90% maximum density as determined by the "Modified AASHTO T-180 Compaction Test," (A.S.T.M.-D-1557). All filled places within public roadways shall be compacted to 90% of maximum density as determined by the "Standard Proctor Test AASHTO T-99, Method C" (A.S.T.M. D-698).
- No area shall be cleared without the permission of the Project Engineer.
- All grades shall be within 0.2 feet of those shown on the grading plan.
- No slope shall be steeper than 3:1 or as called for in the Soils Report for the Project. All slopes shall be sodded or seeded and mulched.
- All construction and materials used shall conform to current City of Fallon Standards.

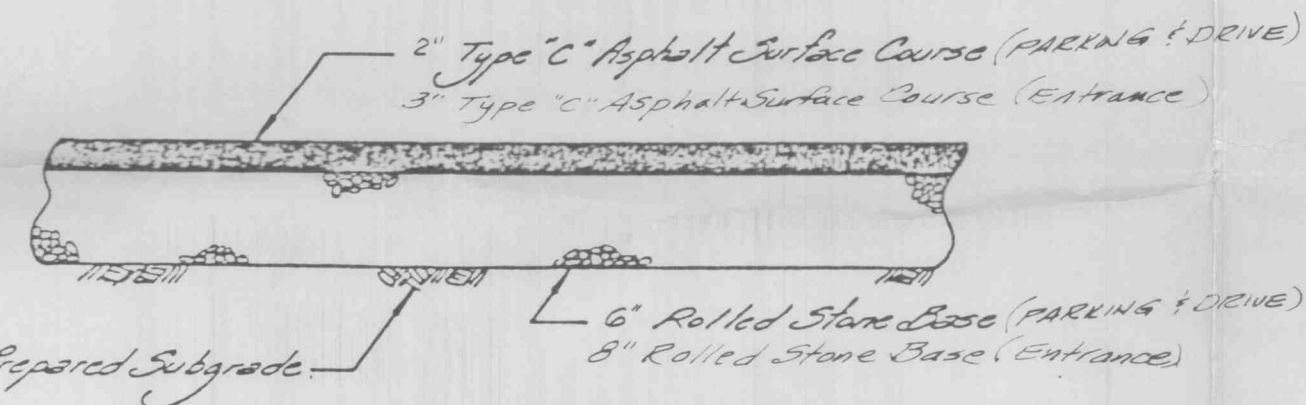
**A SITE PLAN FOR
STEFANINA'S PIZZERIA & RESTAURANT
(PARKING LOT IMPROVEMENTS)
A TRACT OF LAND BEING PART OF
N.W. 1/4 OF THE S.W. 1/4 OF FRACTIONAL SECTION 28
TOWNSHIP 47 NORTH, RANGE 3 EAST
ST. CHARLES COUNTY, MISSOURI**



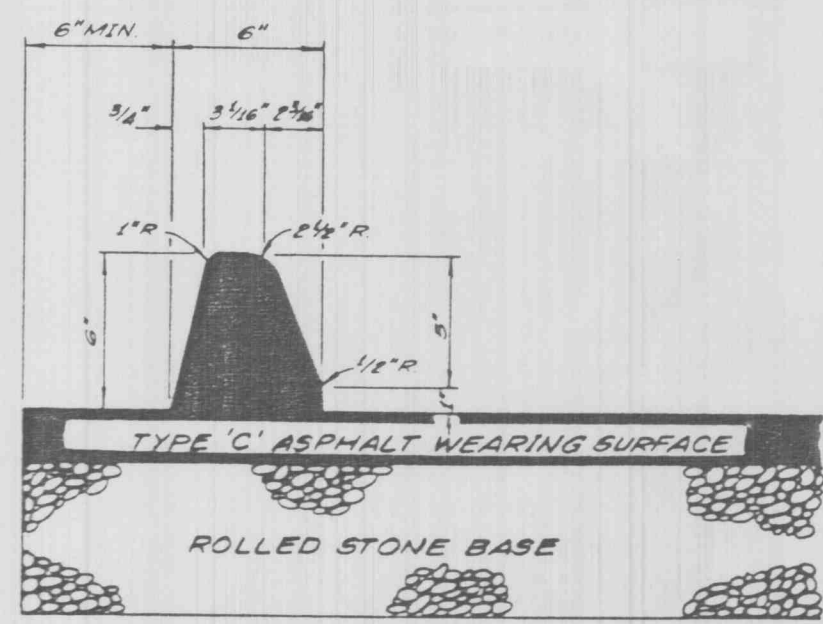
- TREES REQUIRED:**
142' (FRONTAGE) ÷ 40 = 3 TREES
10,200' (OPEN AREA) ÷ 3000 = 3 TREES
TOTAL REQ'D = 6 TREES
- TREES PROVIDED:**
5 EACH PROPOSED
6 EACH EXISTING
TOTAL PROVIDED = 11 EACH
- SITE BENCH MARK: ELEVATION = 584.99**
OLD IRON PIPE AT S.E. PROPERTY CORNER.
- U.S.G.S BENCH MARK: ELEVATION = 493.87**
CHISELED "D" IN TOP OF SOUTH HEADWALL IN MIDDLE OF MEXICO RD. BRIDGE OVER BELLEAU CREEK. (CULVERT REMOVED DURING CONSTRUCTION OF NEW BRIDGE OVER BELLEAU CREEK.)



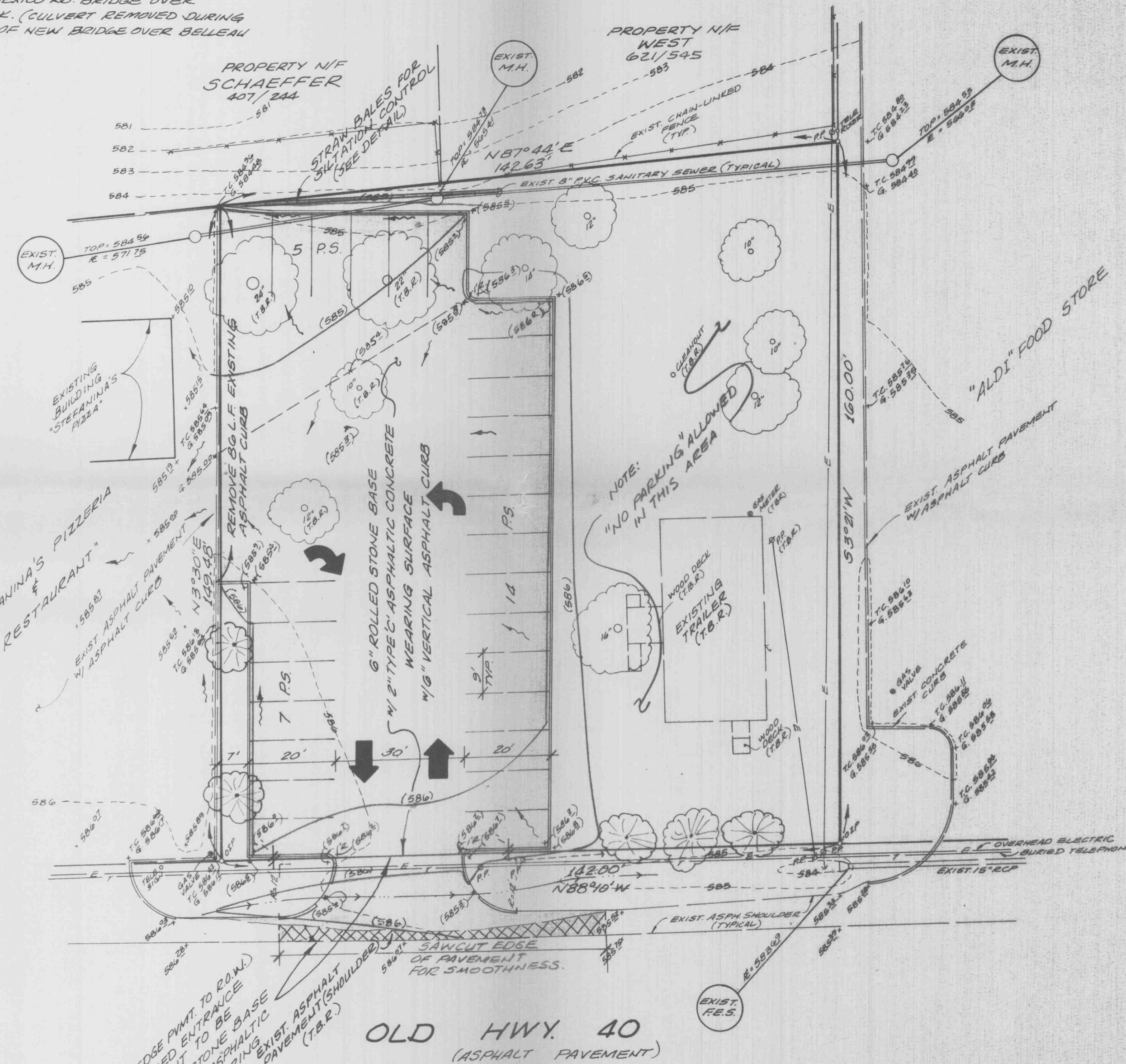
SILTATION CONTROL DETAIL
NO SCALE



ASPHALT PAVEMENT TYP. SECTION

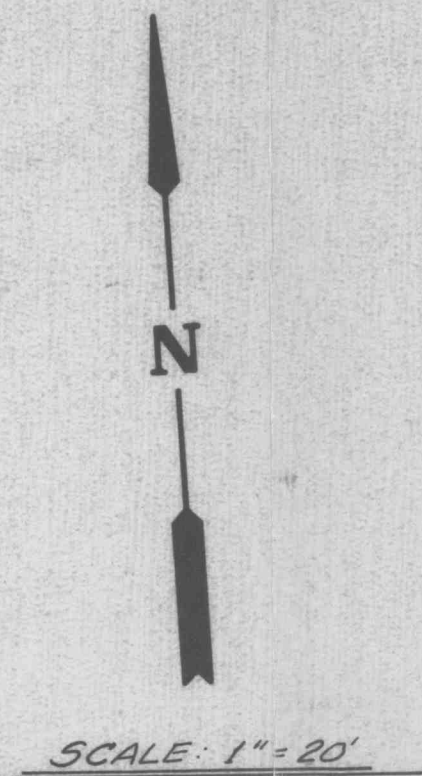


6" VERTICAL ASPHALT CURB
NOT TO SCALE



OLD HWY. 40
(ASPHALT PAVEMENT)

- TREE LEGEND**
- (Symbol) - 6 EACH EXISTING TREES
 - (Symbol) - 5 EACH PROPOSED TREES (HARDWOODS) (8" MIN. DIAMETER, 8' MIN. HEIGHT)



EXISTING	PROPOSED
(Symbol) Contour	(Symbol) Contour
(Symbol) Spot Elevation	(Symbol) Spot Elevation
(Symbol) Building Line	(Symbol) Building Line
(Symbol) Property Line	(Symbol) Property Line
(Symbol) Center Line	(Symbol) Center Line
(Symbol) Structure	(Symbol) Structure
(Symbol) Tree or Bush	(Symbol) Tree or Bush
(Symbol) Chain Link	(Symbol) Chain Link
(Symbol) Storm Sewer	(Symbol) Storm Sewer
(Symbol) Sanitary Sewer	(Symbol) Sanitary Sewer
(Symbol) Catch or Area Catch Basin	(Symbol) Catch or Area Catch Basin
(Symbol) Grated Inlet	(Symbol) Grated Inlet
(Symbol) Manhole	(Symbol) Manhole
(Symbol) Flared End Section	(Symbol) Flared End Section
(Symbol) Culvert	(Symbol) Culvert
(Symbol) Utility or Power Pole	(Symbol) Utility or Power Pole
(Symbol) Fire Hydrant	(Symbol) Fire Hydrant
(Symbol) Soil Boring	(Symbol) Soil Boring
(Symbol) Railroad	(Symbol) Railroad
(Symbol) Gas Main	(Symbol) Gas Main
(Symbol) Water Main	(Symbol) Water Main
(Symbol) Telephone	(Symbol) Telephone
(Symbol) Electric	(Symbol) Electric
(Symbol) Use in Place	(Symbol) Use in Place
(Symbol) To Be Removed & Replaced	(Symbol) To Be Removed & Replaced
(Symbol) Sewer	(Symbol) Sewer
(Symbol) Light Standard	(Symbol) Light Standard
(Symbol) Handicapped	(Symbol) Handicapped

PREPARED FOR:
STEFANINA'S PIZZERIA & RESTAURANT
109 E. OLD HWY. 40
O'FALLON, MO. 63366
(314)272-5200

APPROVED
10-12-90
Frank Hedwin

PREPARED BY:

BAL	ENGINEERING	OCT 3, 1990	10-10-90
	PLANNING	DATE	REVISIONS
	SURVEYING	DATE	REVISIONS

221 Perist West Boulevard
St. Charles, MO 63301
314-646-6568
314-724-3350

90-3857
PROJECT NUMBER

1 OF 1
SHEET