

VEGETATIVE ESTABLISHMENT FOR URBAN DEVELOPMENT SITES

APPENDIX A

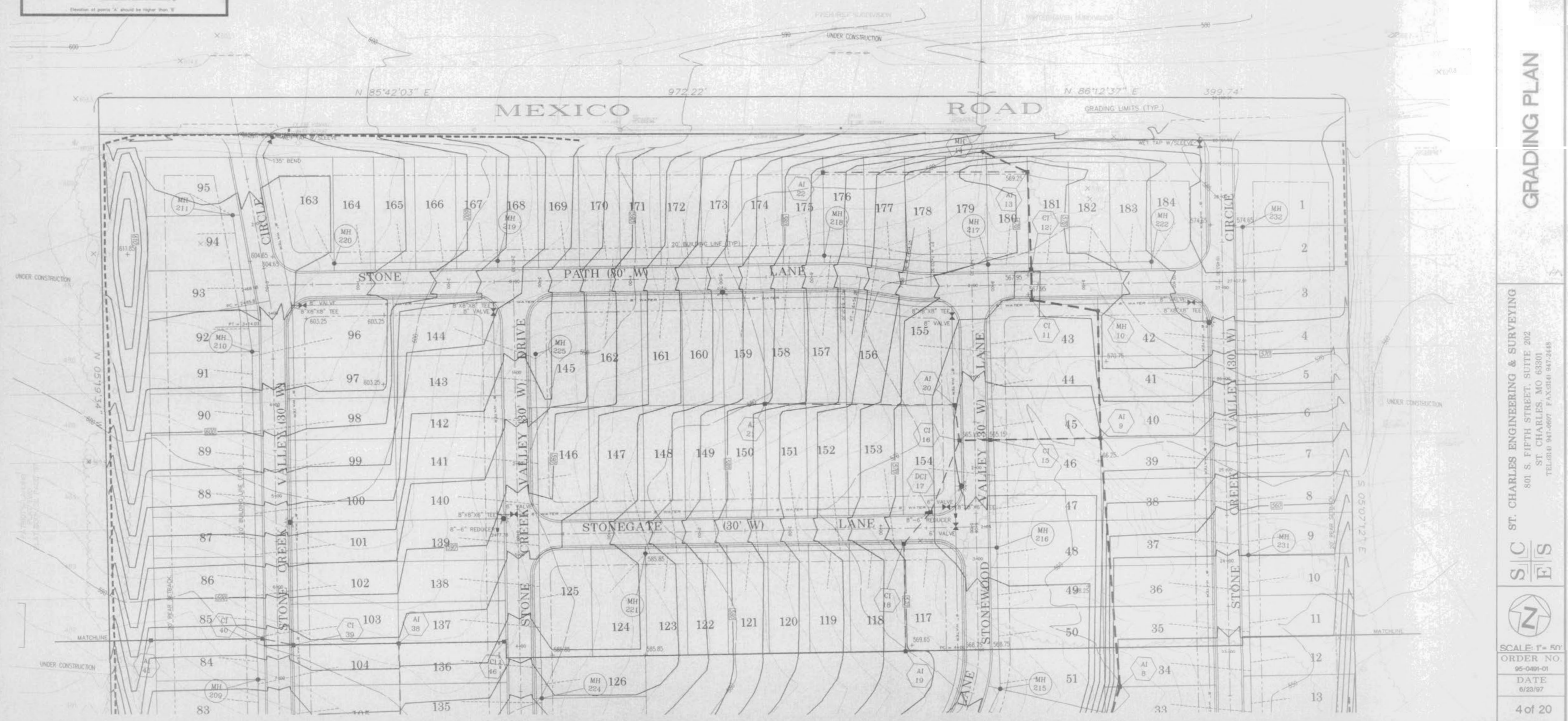
Seeding Rates
Permanent
Tall Fescue - 30 lbs./ac.
Smooth Bromes - 20 lbs./ac.
Combined Fescue & Bromes @ 10 lbs./ac. and Bromes @ 10 lbs./ac.
Temporary
Wheat or Rye - 100 lbs./ac. (3.5 lbs. per 1000 square feet)
Oats - 120 lbs./ac. (2.75 lbs. per 1000 square feet)

Seeding periods
Fescue or Bromes March 1 to June 1 August 1 to October 1
Wheat or Rye March 15 to November 1 March 15 to September 15
Oats March 15 to September 15

Mulch Rates: 100 lbs. Per 1,000 sq. ft. (4,356 lbs. per acre)

Fertilizer Rates: Nitrogen 30 lbs./ac.
Phosphate 20 lbs./ac.
Potassium 30 lbs./ac.
Lime 600 lbs./ac. EMW

EMW - effective neutralizing material as per State evaluation of quarried rock.



GRADING PLAN

ST. CHARLES ENGINEERING & SURVEYING
801 S. FIFTH STREET, SUITE 202
ST. CHARLES, MO 63301
TEL: 636 947-0667 FAX: 636 947-2448



SCALE: 1" = 50'
ORDER NO. 05-0491-01
DATE 6/23/97
4 of 20