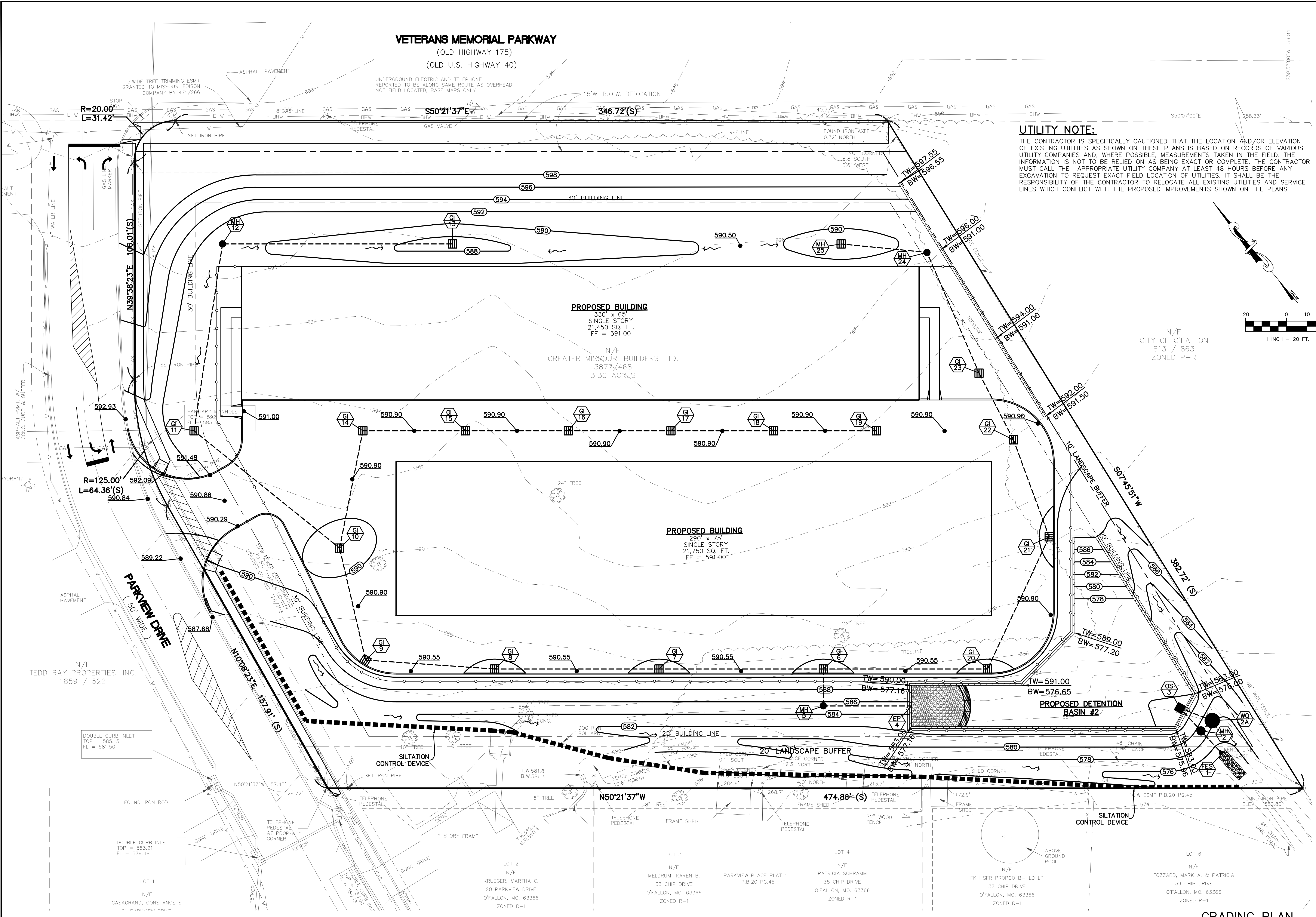
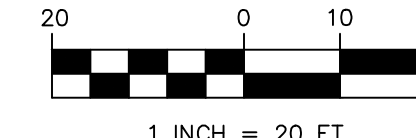
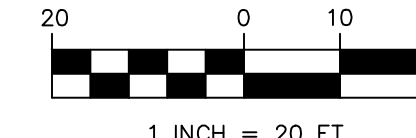


**VETERANS MEMORIAL PARKWAY**  
(OLD HIGHWAY 175)  
(OLD U.S. HIGHWAY 40)



**UTILITY NOTE:**

THE CONTRACTOR IS SPECIFICALLY CAUTIONED THAT THE LOCATION AND/OR ELEVATION OF EXISTING UTILITIES AS SHOWN ON THESE PLANS IS BASED ON RECORDS OF VARIOUS UTILITY COMPANIES AND, WHERE POSSIBLE, MEASUREMENTS TAKEN IN THE FIELD. THE INFORMATION IS NOT TO BE RELIED ON AS BEING EXACT OR COMPLETE. THE CONTRACTOR MUST CALL THE APPROPRIATE UTILITY COMPANY AT LEAST 48 HOURS BEFORE ANY EXCAVATION TO REQUEST EXACT FIELD LOCATION OF UTILITIES. IT SHALL BE THE RESPONSIBILITY OF THE CONTRACTOR TO RELOCATE ALL EXISTING UTILITIES AND SERVICE LINES WHICH CONFLICT WITH THE PROPOSED IMPROVEMENTS SHOWN ON THE PLANS.



N/F  
CITY OF O'FALLON  
813 / 863  
ZONED P-R

**PROJECT TITLE**  
**LAND PLANNING • CIVIL ENGINEERING**  
 4053 North St. Peters Pkwy. Ste D  
 St. Peters, MISSOURI 63304  
 Ph: (636) 477-6466  
 MO. CERT. OF AUTHORITY  
 FOR ENGINEERING  
 LIC. NO. 2019001202

**SEAL**

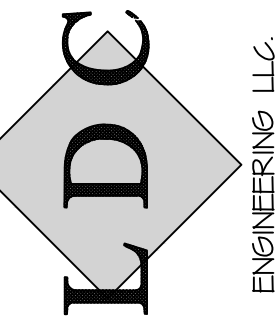
**DEVELOPER**  
 StorCo LLC  
 24 O'Fallon Sq.  
 O'Fallon, Missouri 63366

**OWNER INFORMATION**  
 Greater Midwest Builder LTD  
 1551 Wall St. Ste. 220  
 St. Charles, Missouri 63303

**Approval Date**  
 3-2-2023

**Permit No.**  
 P+Z No. 22-010078

**Page No.**  
 C5



SEAL

WILLIAM AUGUST HEYSE P.E.  
 PROFESSIONAL ENGINEER P-24297

**City of O'Fallon Site Plan**

Copyright 2023 - CONFIDENTIAL PROPRIETARY MATERIAL. ALL RIGHTS RESERVED. NO PART OF THIS DRAWING ARE TO BE REPRODUCED BY ANY MEANS WITHOUT THE WRITTEN PERMISSION OF LDC ENGINEERING, LLC.