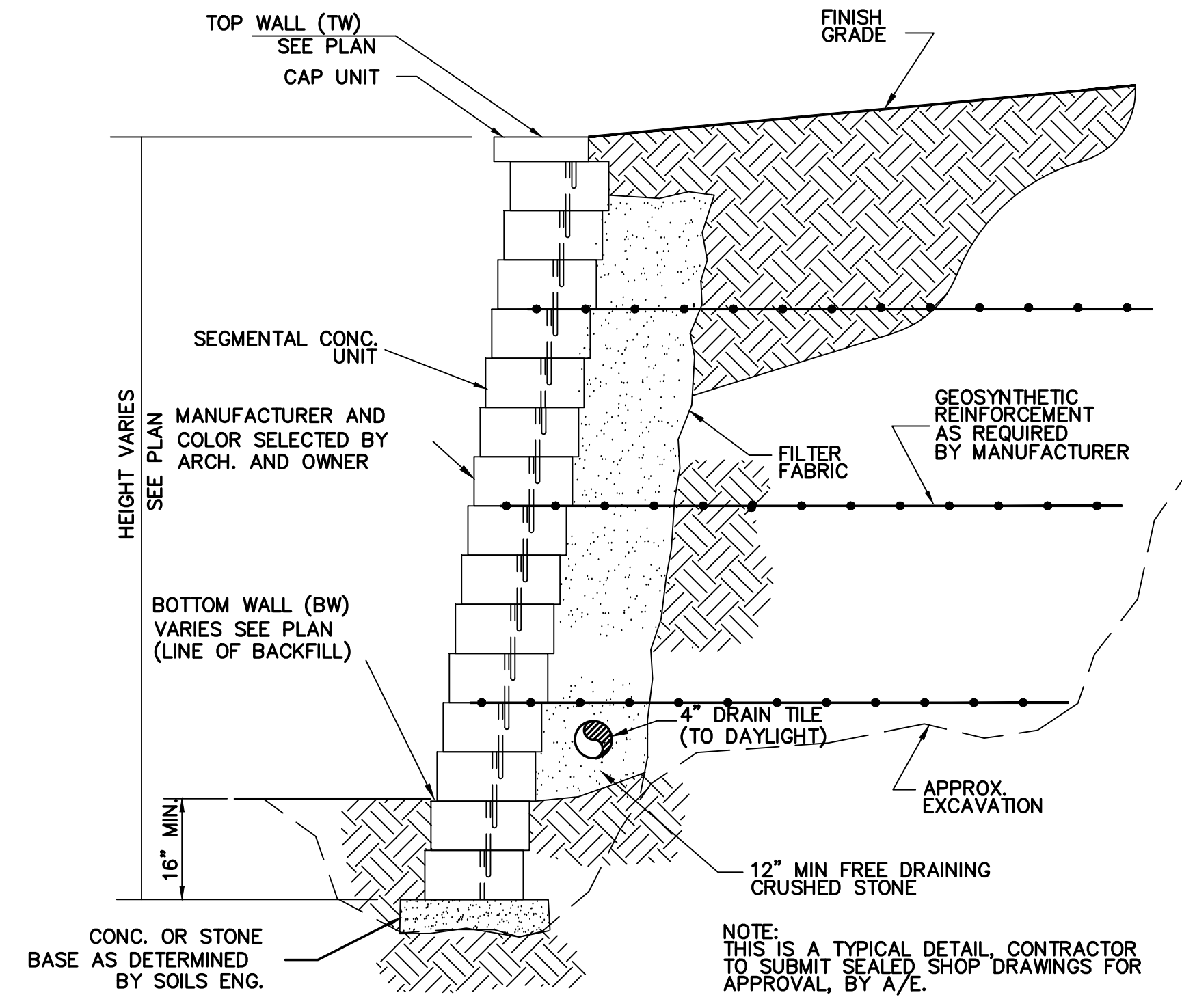
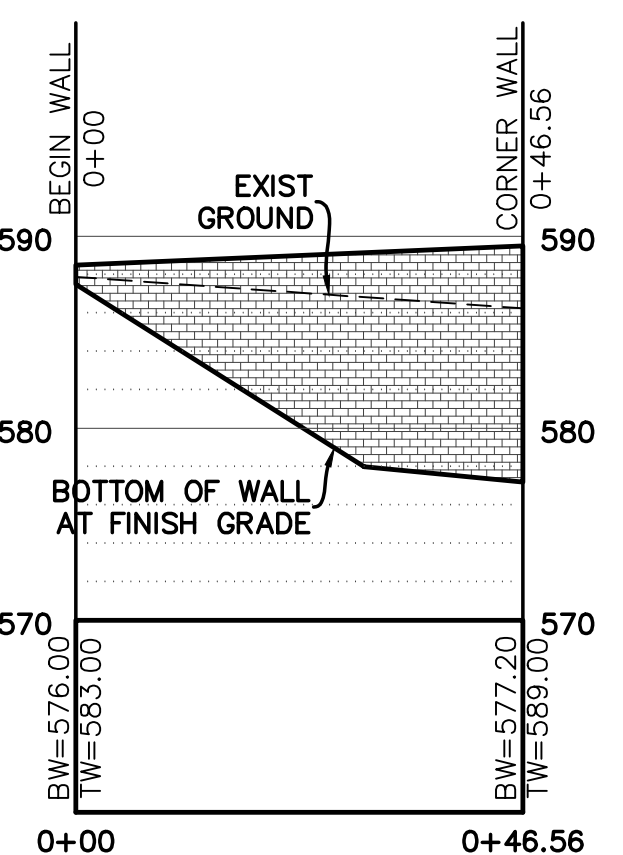


**RETAINING WALL  
PLAN VIEW**

SCALE: 1" = 20' HORIZ.  
1" = 10' VERT.

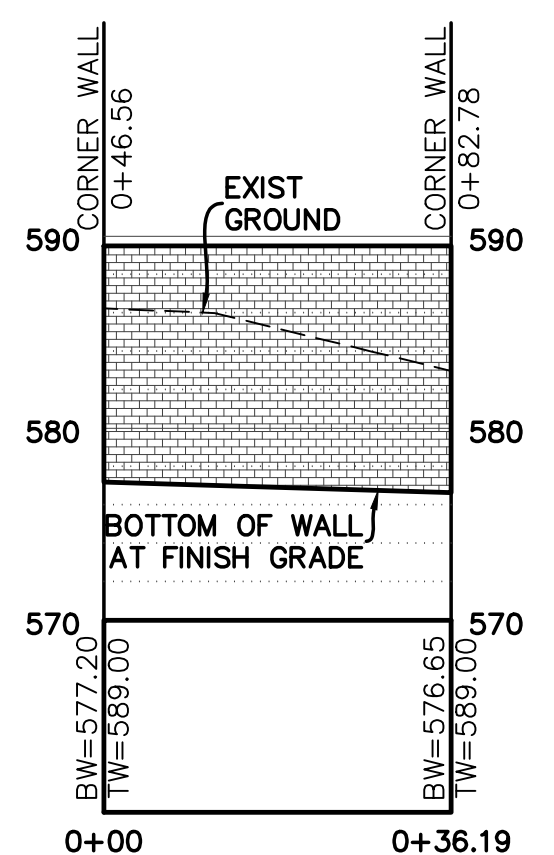


**SEGMENTAL UNIT CONCRETE RETAINING WALL  
(N.T.S.)**



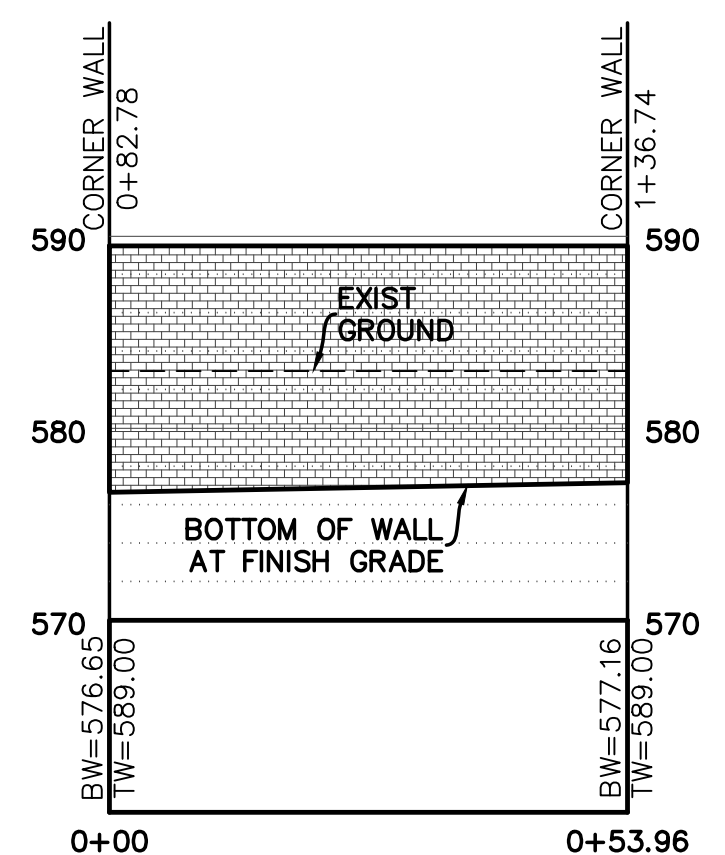
**RETAINING WALL ELEV.  
WALL #1**

SCALE: 1" = 20' HORIZ.  
1" = 10' VERT.



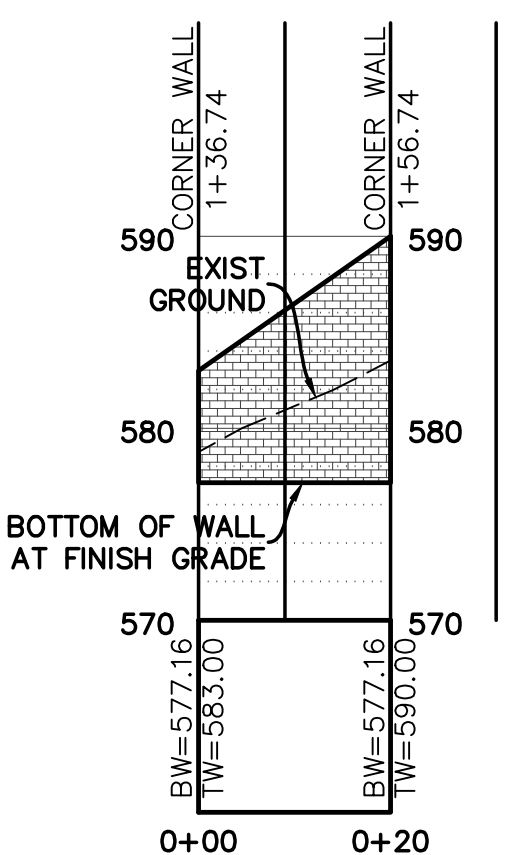
**RETAINING WALL ELEV.  
WALL #2**

SCALE: 1" = 20' HORIZ.  
1" = 10' VERT.



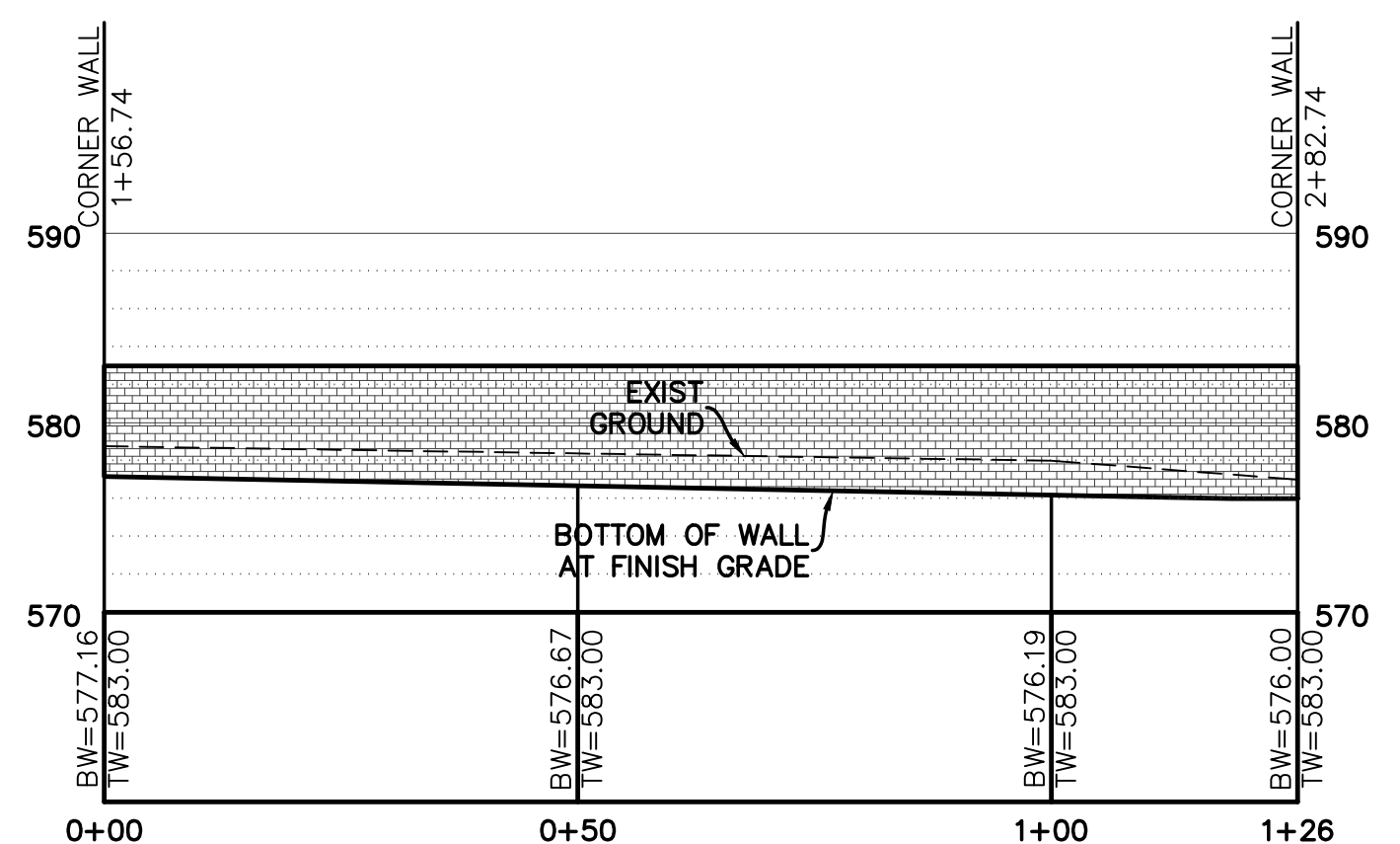
**RETAINING WALL ELEV.  
WALL #3**

SCALE: 1" = 20' HORIZ.  
1" = 10' VERT.



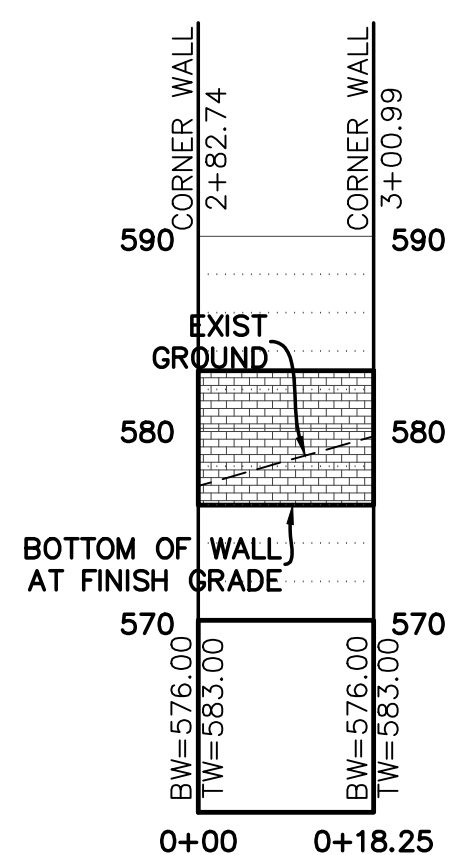
**RETAINING WALL ELEV.  
WALL #4**

SCALE: 1" = 20' HORIZ.  
1" = 10' VERT.



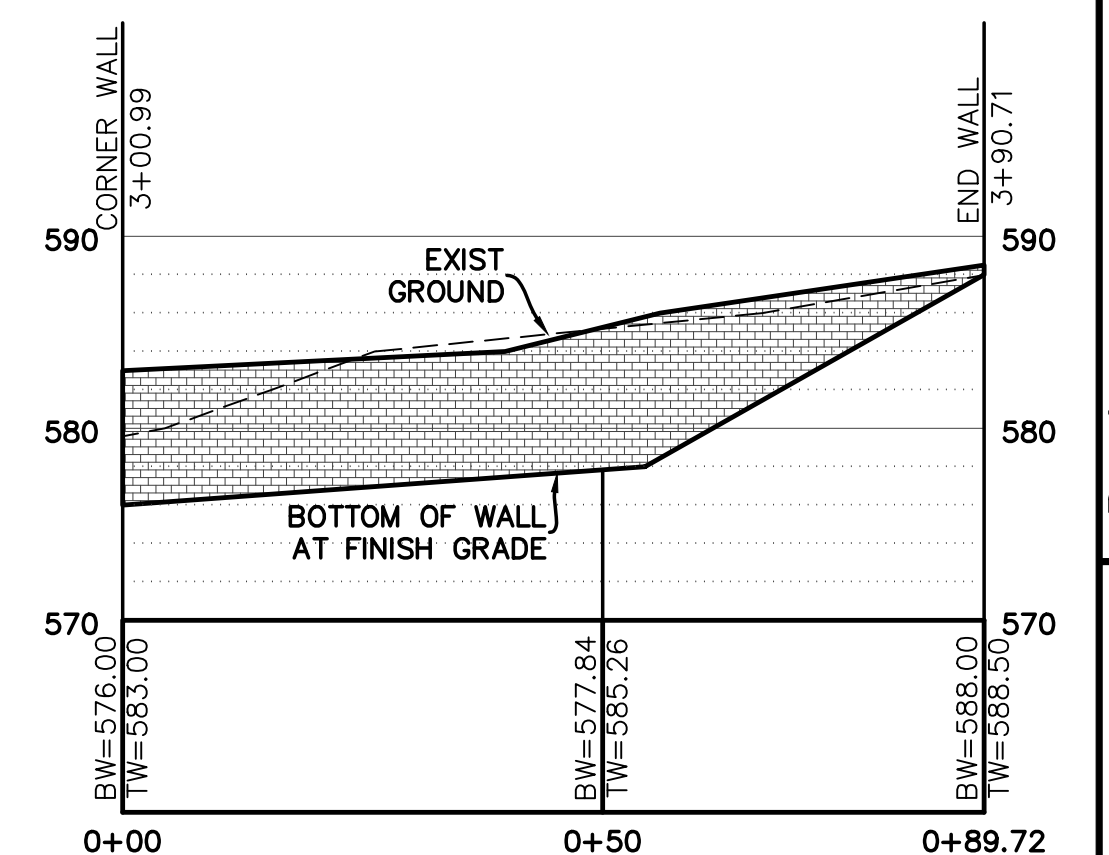
**RETAINING WALL ELEV.  
WALL #5**

SCALE: 1" = 20' HORIZ.  
1" = 10' VERT.



**RETAINING WALL ELEV.  
WALL #6**

SCALE: 1" = 20' HORIZ.  
1" = 10' VERT.



**RETAINING WALL ELEV.  
WALL #7**

SCALE: 1" = 20' HORIZ.  
1" = 10' VERT.

COPYRIGHT 2023 - CONFIDENTIAL PROPRIETARY MATERIAL. THE USE, REPRODUCTION AND SALES RIGHTS OF THIS DRAWING ARE RESERVED BY LDC ENGINEERING, LLC.

**RETAINING WALL PROFILES**

REVISION

**PROJECT TITLE**  
**StorCo Self Storage**  
**New Buildings and Drive**  
**O'Fallon, Mo.**

**LAND PLANNING • CIVIL ENGINEERING**  
 4053 North St. Peters Pkwy. Ste D  
 St. Peters, MISSOURI 63304  
 St. Ph: (636) 477-6466  
 MO. CERT. OF AUTHORITY  
 FOR ENGINEERING  
 LIC. NO. 2019001202

**LDC**  
 ENGINEERING LLC.

**SEAL**

**WILLIAM AUGUST HEYSE, P.E.**  
 PROFESSIONAL ENGINEER 1-24297

**Developer**  
 StorCo LLC  
 24 O'Fallon Sq.  
 O'Fallon, Missouri 63366

**Owner Information**  
 Greater Midwest Builder LTD  
 1551 Wall St. Ste. 220  
 St. Charles, Missouri 63303

**City of O'Fallon Site Plan**

**P+Z No. 22-010078**  
**Approval Date**  
 3-2-2023  
**Permit No.**

**Page No.**  
**C7**