

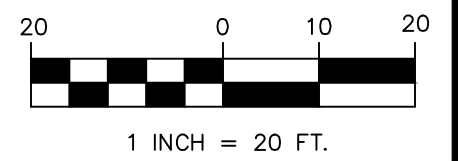
**VETERANS MEMORIAL PARKWAY**  
(OLD HIGHWAY 175)  
(OLD U.S. HIGHWAY 40)

**NOTE:**  
THIS SHEET IS FOR DRAINAGE CALCULATION PURPOSES ONLY. SEE  
SITE PLAN & GRADING PLAN FOR CONSTRUCTION IMPROVEMENTS

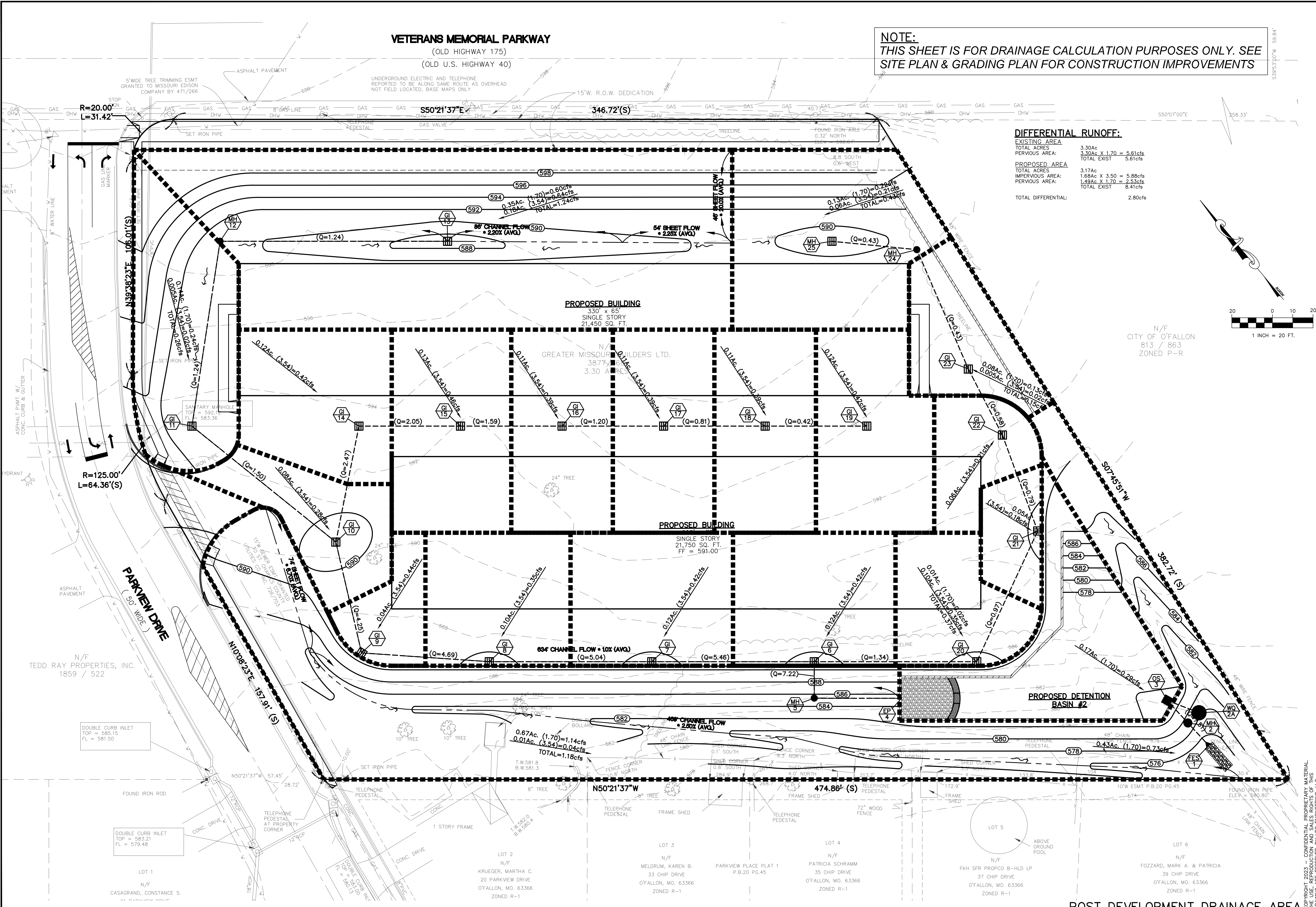
**DIFFERENTIAL RUNOFF:**

EXISTING AREA	
TOTAL ACRES:	3.30ac
PERVIOUS AREA:	3.30ac x 1.70 = 5.61cfs
TOTAL EXIST:	5.61cfs
PROPOSED AREA	
TOTAL ACRES:	3.17ac
IMPERVIOUS AREA:	1.68ac x 3.50 = 5.88cfs
PERVIOUS AREA:	1.49ac x 1.70 = 2.53cfs
TOTAL EXIST:	8.41cfs

TOTAL DIFFERENTIAL: 2.80cfs



N/F  
CITY OF O'FALLON  
813 / 863  
ZONED P-R



**PROJECT TITLE**  
LAND PLANNING • CIVIL ENGINEERING

**Developer**  
StorCo LLC  
24 O'Fallon Sq.  
O'Fallon, Missouri 63366

**Owner Information**  
Greater Midwest Builder LTD  
1551 Wall St. Ste. 220  
St. Charles, Missouri 63303

**City of O'Fallon Site Plan**

**SEAL**

WILLIAM AUGUST HEYSE P.E.  
PROFESSIONAL ENGINEER E-24297

**Approval Date**  
3-2-2023

**Permit No.**

**Page No.**  
DA2

POST DEVELOPMENT DRAINAGE AREA

COPYRIGHT 2023 - CONFIDENTIAL PROPRIETARY MATERIAL. ALL RIGHTS RESERVED. NO PART OF THIS DRAWING ARE TO BE REPRODUCED OR TRANSMITTED IN ANY FORM OR BY ANY MEANS WITHOUT THE WRITTEN PERMISSION OF LDC ENGINEERING, LLC.