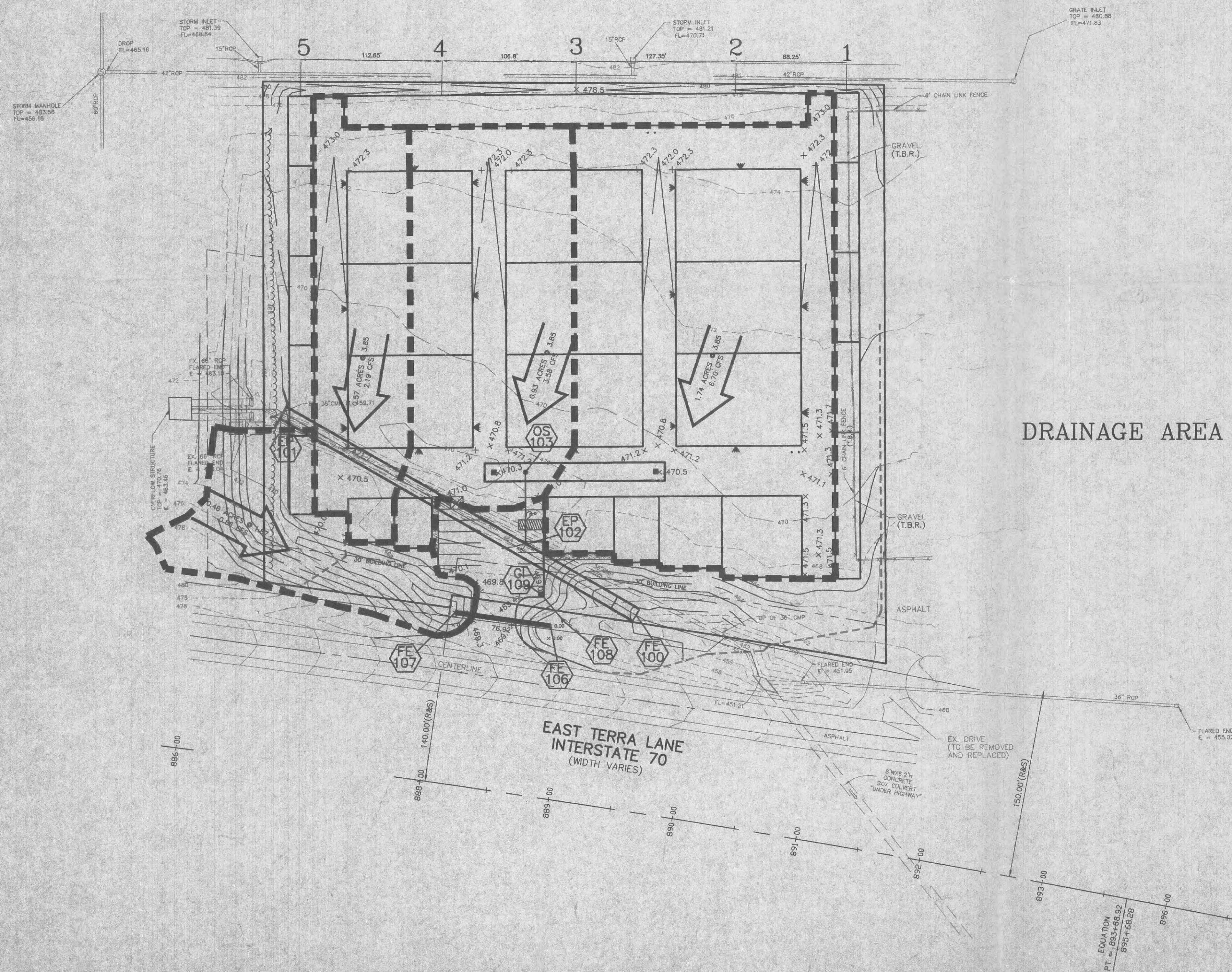
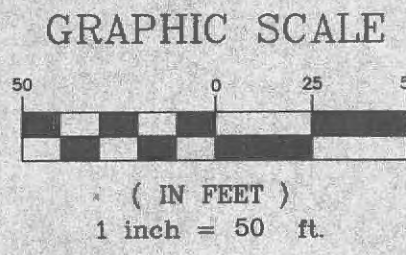


A SITE PLAN FOR
STORAGE MASTERS OF O'FALLON
 A TRACT OF LAND BEING PART OF
 FRACTIONAL SECTION 26,
 TOWNSHIP 47 NORTH, RANGE 3 EAST,
 OF THE FIFTH PRINCIPAL MERIDIAN,
 ST. CHARLES COUNTY, MISSOURI



DRAINAGE AREA MAP - NOT FOR CONSTRUCTION

PREPARED FOR:
JOHN BURROWS
STORAGE MASTERS
30251 VIA FESTIVO
SAN JUAN CAP, CA
(714) 443-0993
 92675

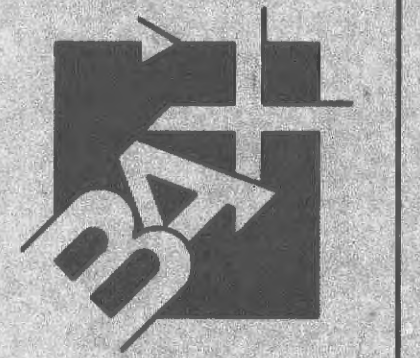
PREPARED FOR:

DISCLAIMER OF RESPONSIBILITY
 I hereby specify that the documents intended to be authorized by my seal are limited to this sheet, and I hereby disclaim any responsibility for all other drawings, specifications, estimates, reports or other documents or instruments relating to or intended to be used for any part or parts of the architectural or engineering project or survey.

Copyright 1998
 Ben Engineering Company, Inc.
 All Rights Reserved

REVISIONS

5-14-97	CITY O'FALLON
7-18-97	FIRE DEPT.
8-18-97	BLDG LAYOUT
8-27-97	STATE ENTRANCE
10-22-97	STATE ENTRANCE
11-03-97	BUILDING #1
12-11-97	DETENTION



**ENGINEERING
 PLANNING
 SURVEYING**
 1052 South Cloverleaf Drive
 St. Peters, MO. 63376-6445
 314-928-5552
 FAX 928-1718

4-23-97
 DATE
 97-9035
 PROJECT NUMBER
 3 OF 3
 SHEET OF
 9035CON.DWG
 FILE NAME
 ADJ RLF
 DRAWN CHECKED