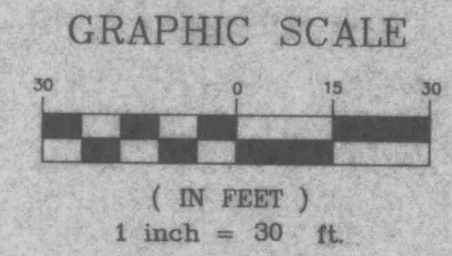
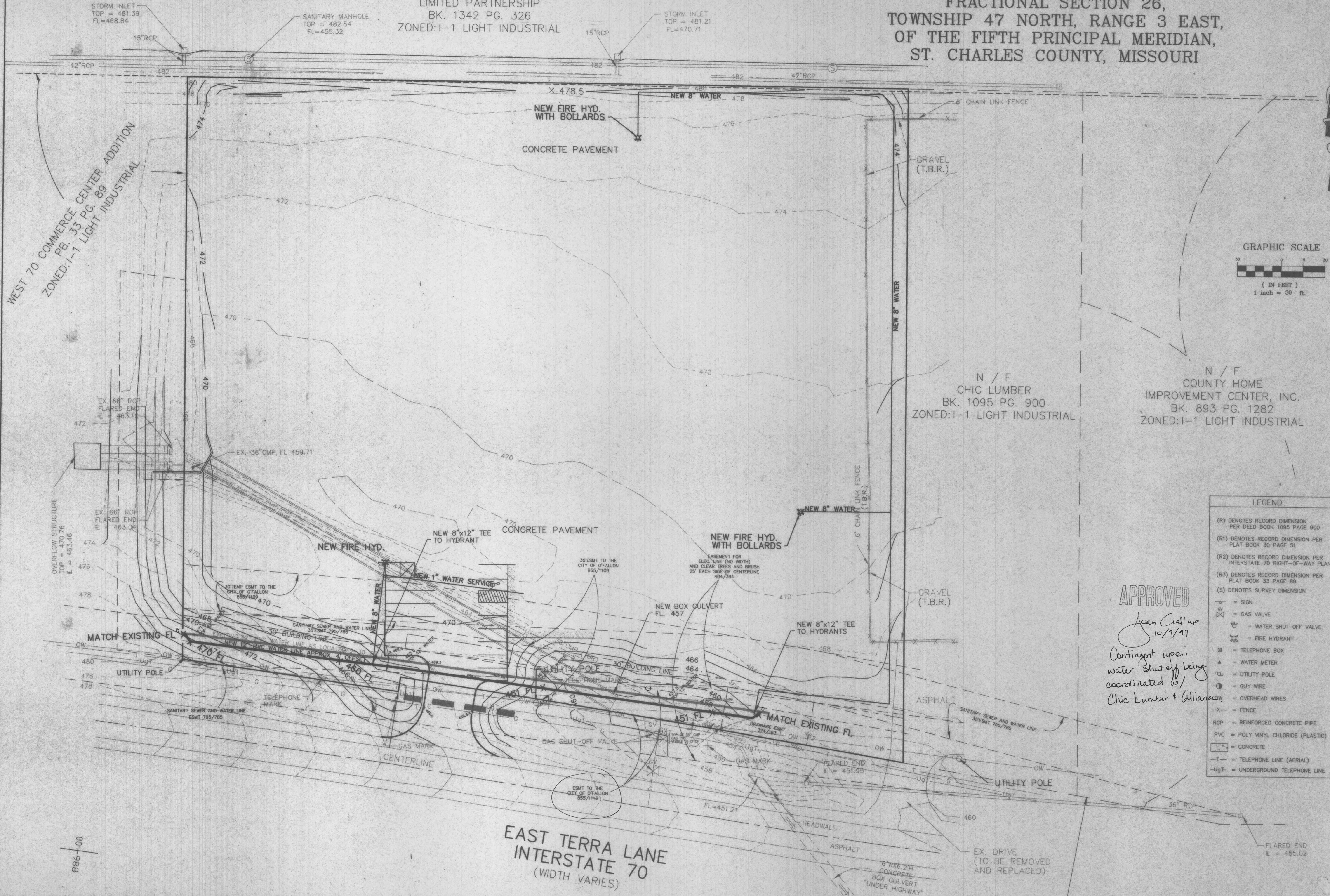


WEST 70 COMMERCE CENTER  
PB. 30 PG. 51

N / F  
DISTRIBUTION FACILITIES I  
LIMITED PARTNERSHIP  
BK. 1342 PG. 326  
ZONED: I-1 LIGHT INDUSTRIAL

A WATER LINE RELOCATION PLAN FOR  
**STORAGE MASTERS OF O'FALLON**  
A TRACT OF LAND BEING PART OF  
FRACTIONAL SECTION 26,  
TOWNSHIP 47 NORTH, RANGE 3 EAST,  
OF THE FIFTH PRINCIPAL MERIDIAN,  
ST. CHARLES COUNTY, MISSOURI

PREPARED FOR:  
JOHN BURROWS  
STORAGE MASTERS  
30251 VIA FESTIVO  
SAN JUAN CAPISTRANO, CA 92675  
(714) 443-0993



LEGEND

- (R) DENOTES RECORD DIMENSION PER DEED BOOK 1095 PAGE 900
- (R1) DENOTES RECORD DIMENSION PER PLAT BOOK 30 PAGE 51
- (R2) DENOTES RECORD DIMENSION PER INTERSTATE 70 RIGHT-OF-WAY PLANS
- (R3) DENOTES RECORD DIMENSION PER PLAT BOOK 33 PAGE 89
- (S) DENOTES SURVEY DIMENSION
- S- = SIGN
- X = GAS VALVE
- W = WATER SHUT OFF VALVE
- F = FIRE HYDRANT
- ☐ = TELEPHONE BOX
- M = WATER METER
- U = UTILITY POLE
- G = GUY WIRE
- OW = OVERHEAD WIRES
- X- = FENCE
- RCP = REINFORCED CONCRETE PIPE
- PVC = POLY VINYL CHLORIDE (PLASTIC)
- CON = CONCRETE
- T- = TELEPHONE LINE (AERIAL)
- Ug- = UNDERGROUND TELEPHONE LINE

**APPROVED**  
Jan Cial'up  
10/9/11  
Contingent upon  
water shut off being  
coordinated w/  
Chic Lumber + Alliance

DISCLAIMER OF RESPONSIBILITY  
I hereby certify that the documents intended to be authenticated by my seal are limited to the work and I hereby disclaim any responsibility for all other drawings, specifications, estimates, reports or other documents or instruments relating to or intended to be used for any part or parts of the architectural or engineering project or survey.

Copyright 1994  
Dew Engineering Company, Inc.  
All Rights Reserved

REVISIONS

10-7-11	

**374**  
ENGINEERING  
PLANNING  
SURVEYING  
221 Point West Boulevard  
St. Charles, MO. 63301  
314-946-6588  
314-724-3330  
FAX 947-8182

9-30-97  
DATE  
97-9035  
PROJECT NUMBER  
1 OF 2  
SHEET OF  
9035WATR.DWG  
FILE NAME  
TMC RLF  
DRAWN CHECKED

C:\DWG\9035WATR.MXD DCL B 17:42:32 1997 STATION 26.AU

File