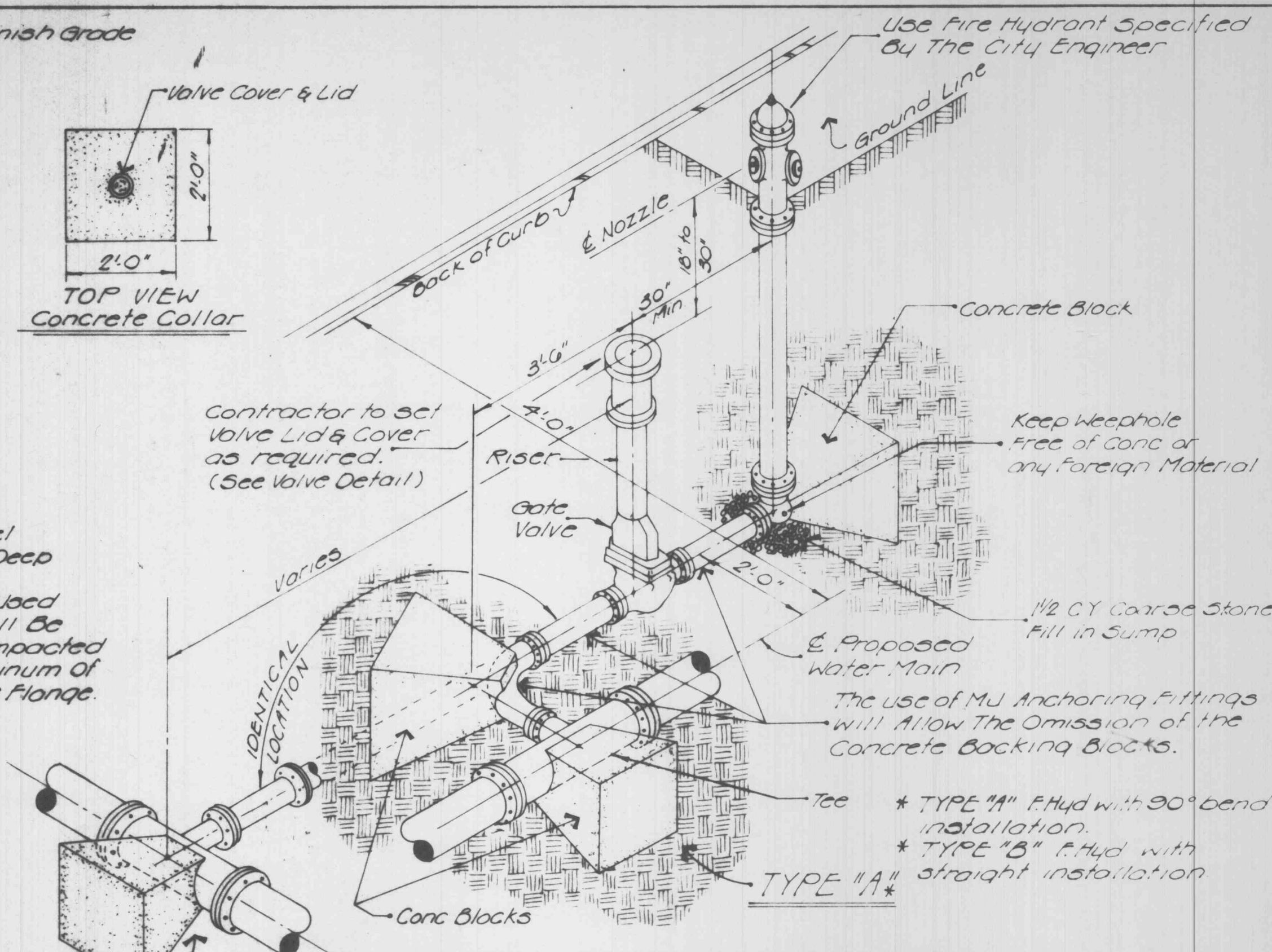
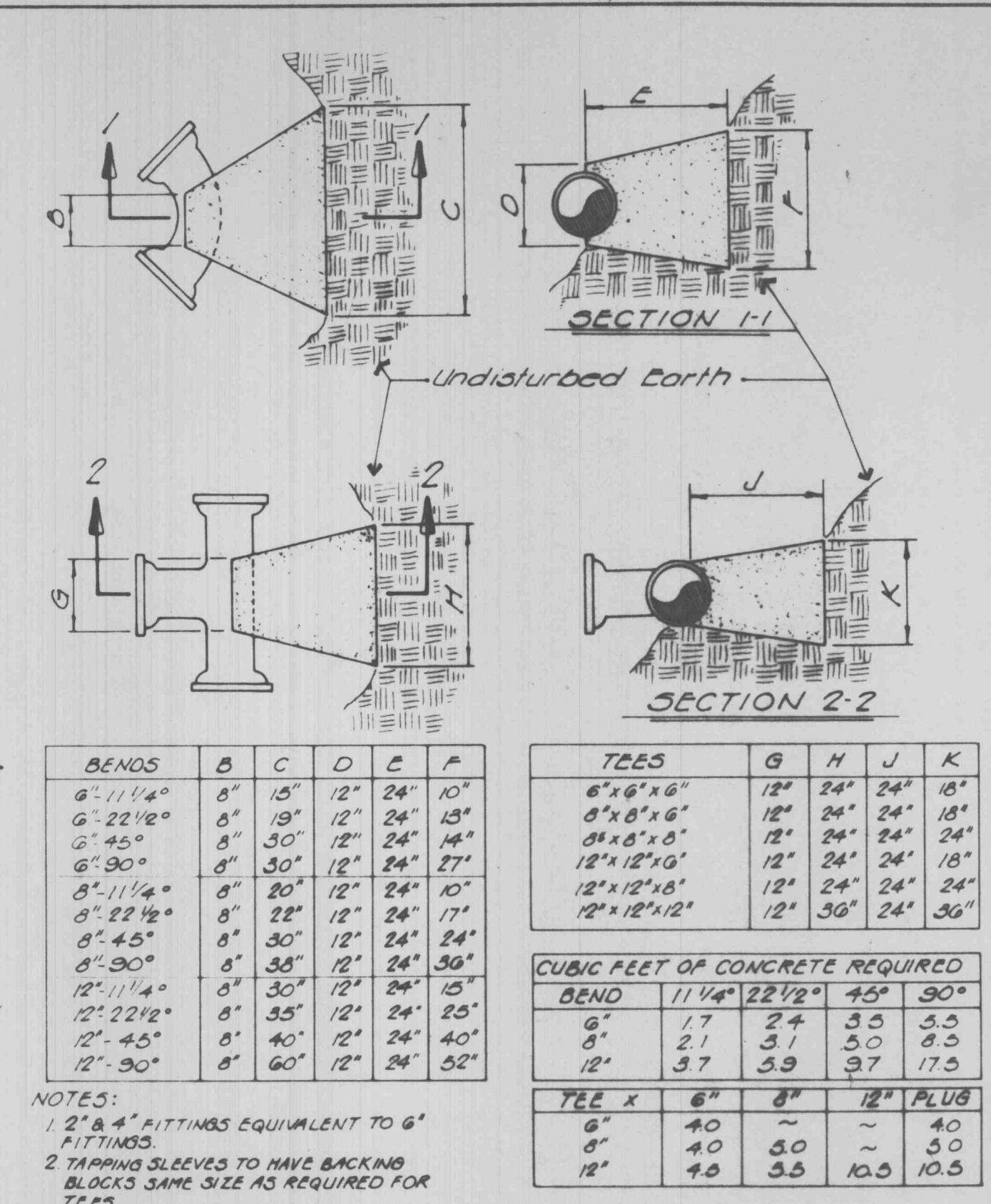


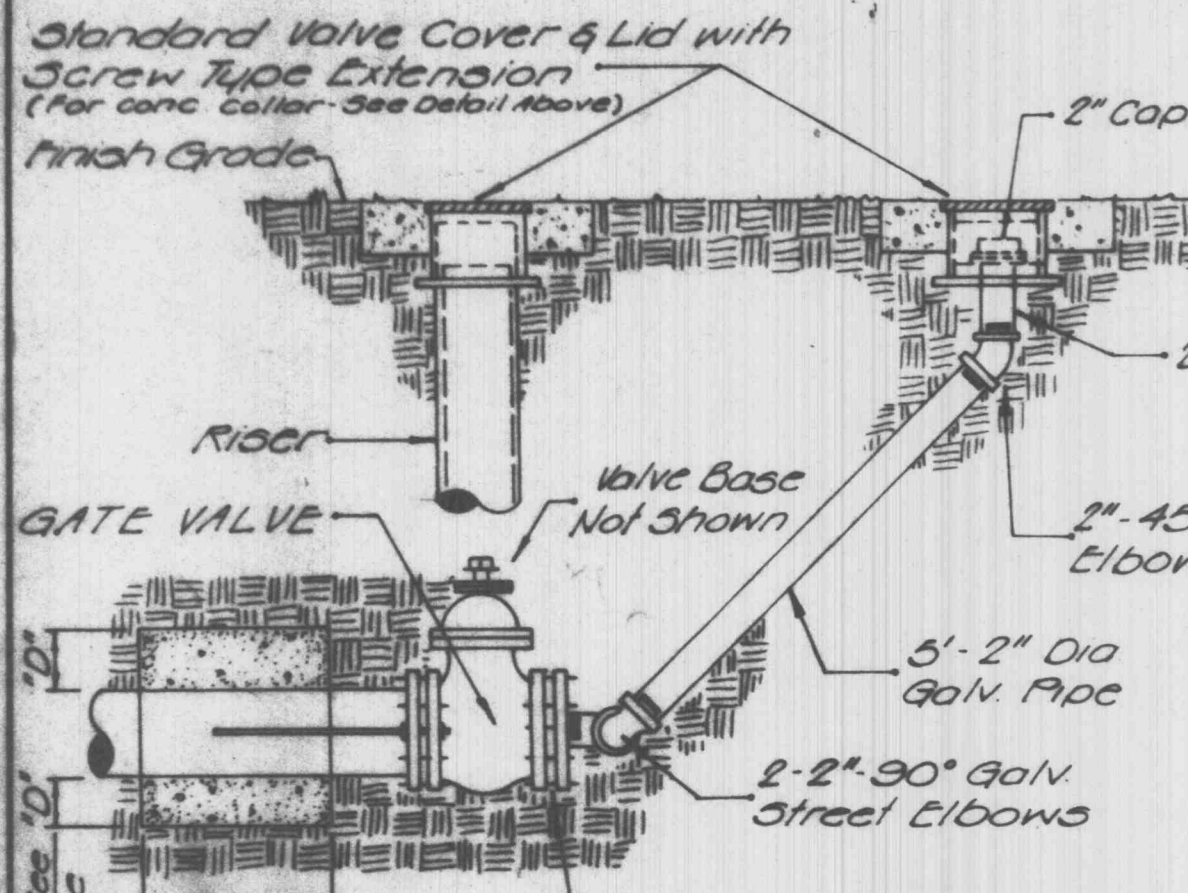
**WATER VALVE DETAIL**



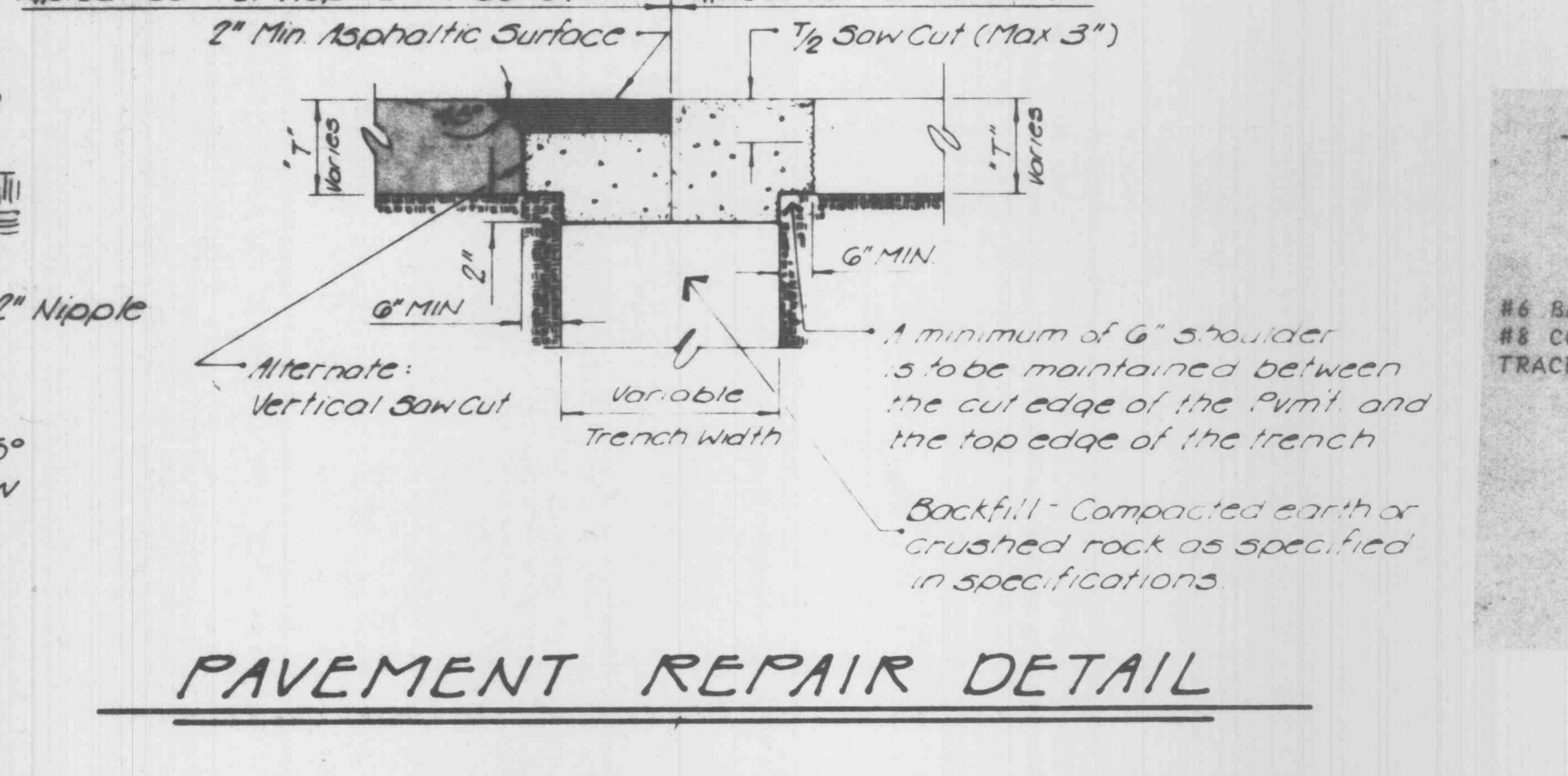
**FIRE HYDRANT DETAIL**



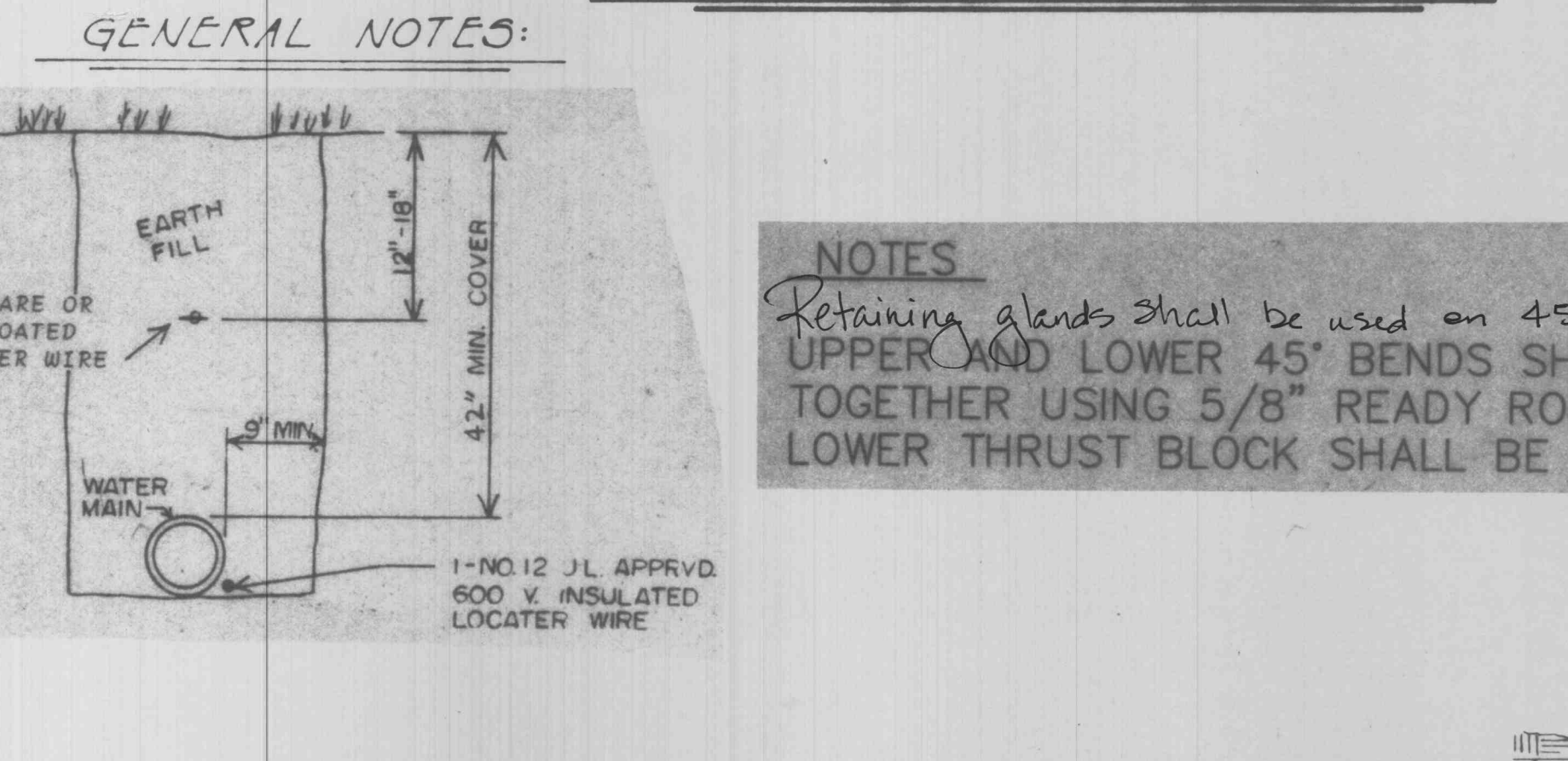
**BACKING BLOCKS**



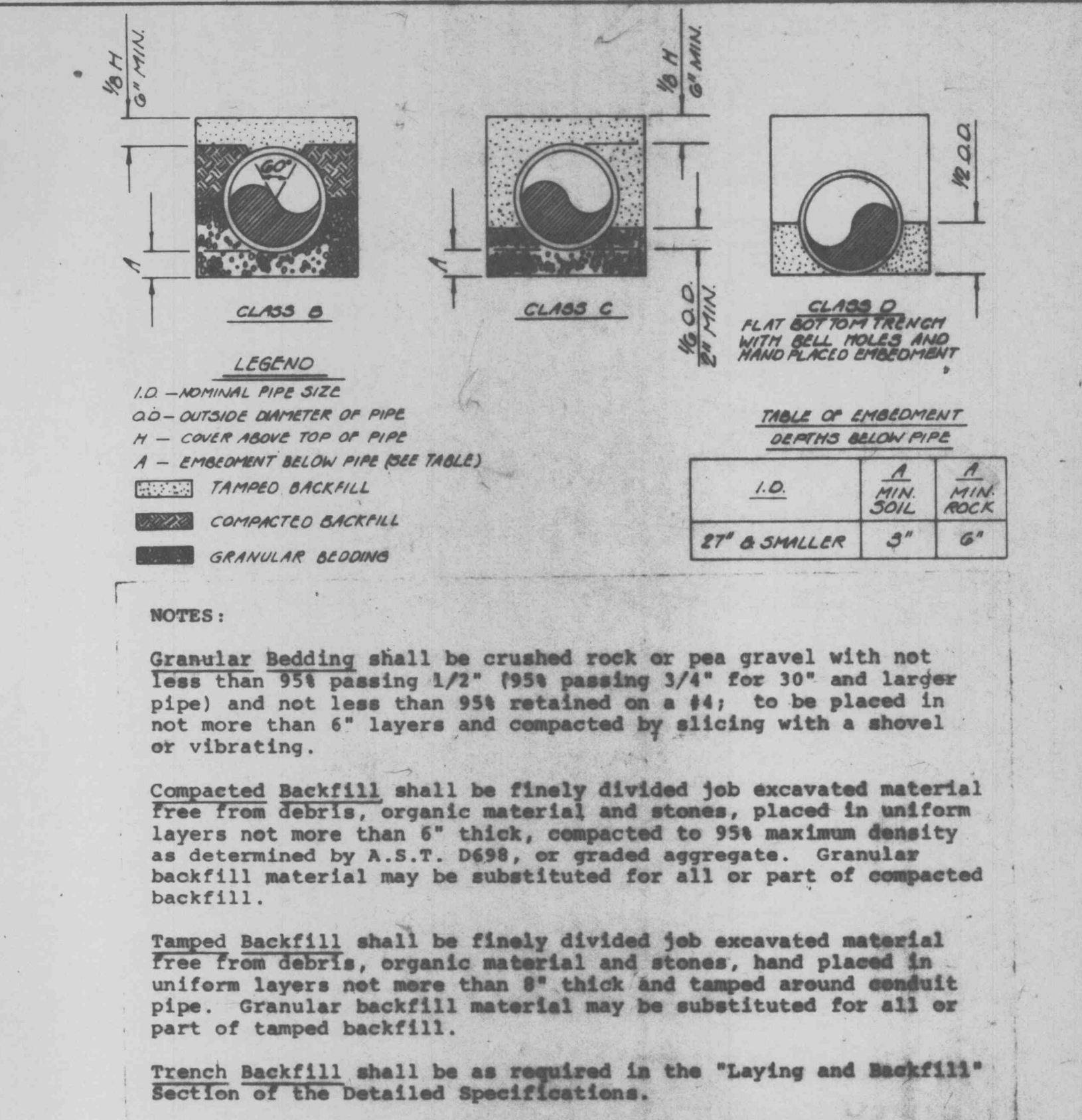
**FLUSHING ASSEMBLY**



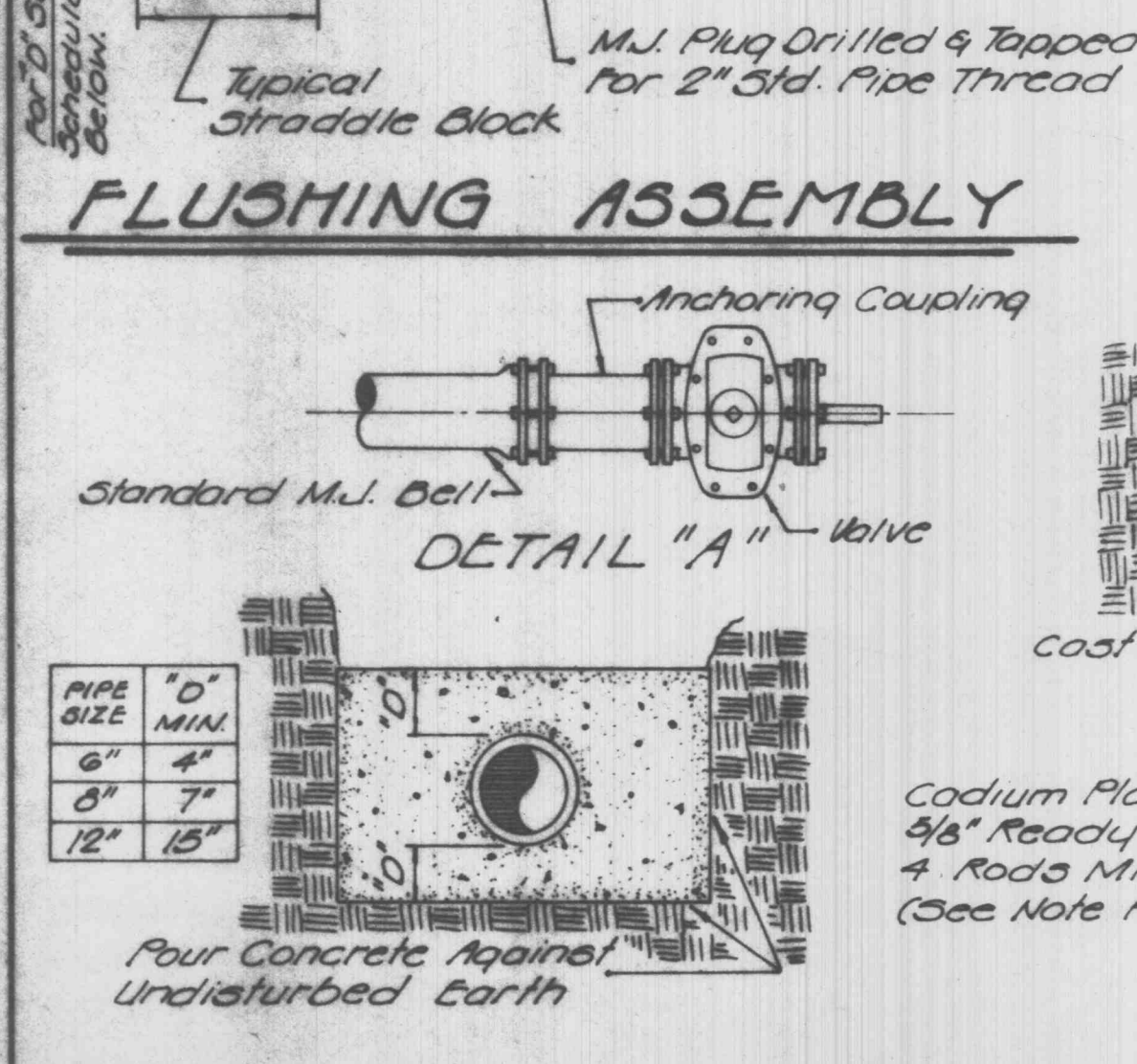
**PAVEMENT REPAIR DETAIL**



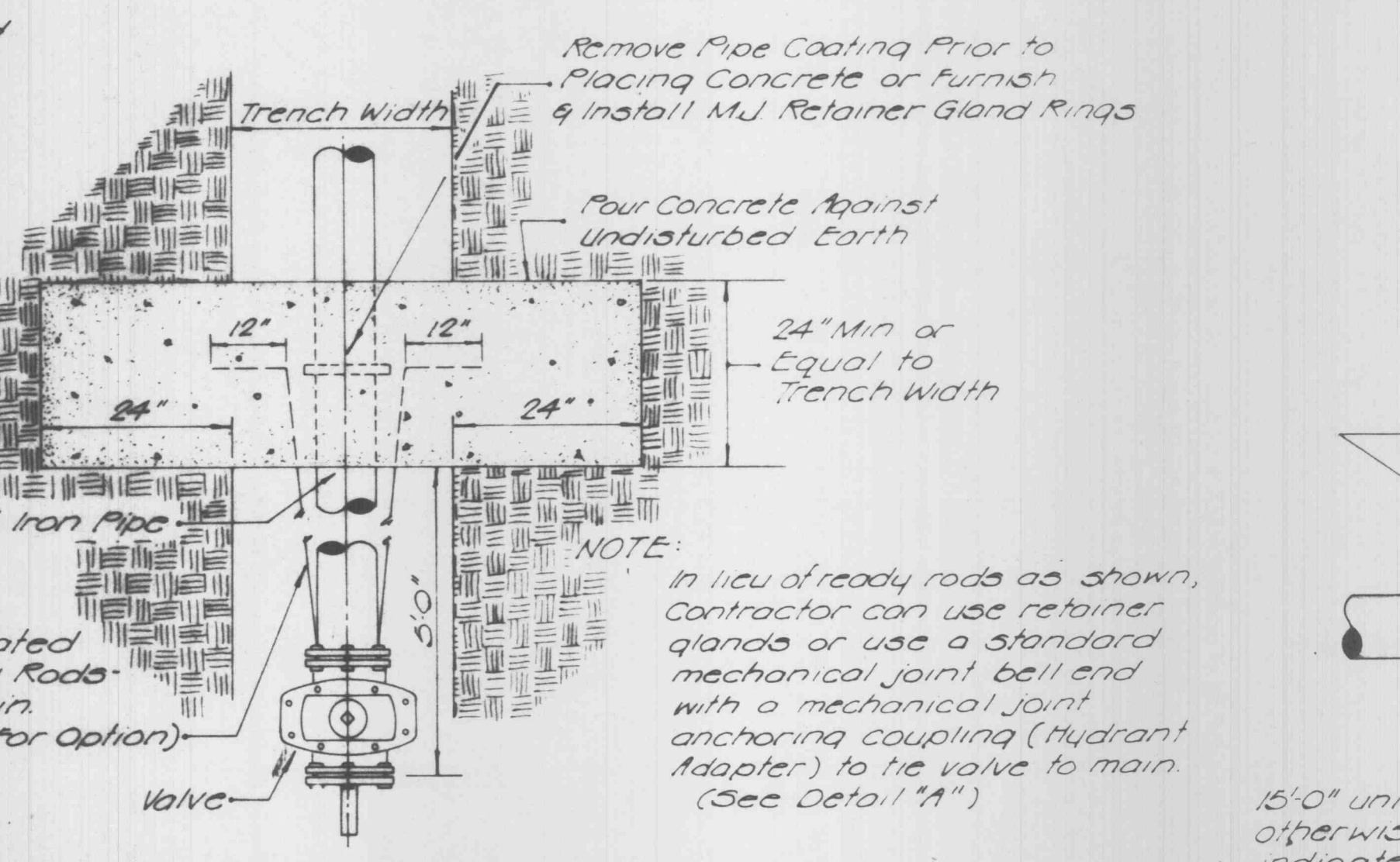
**TUNNEL LINER DETAIL**



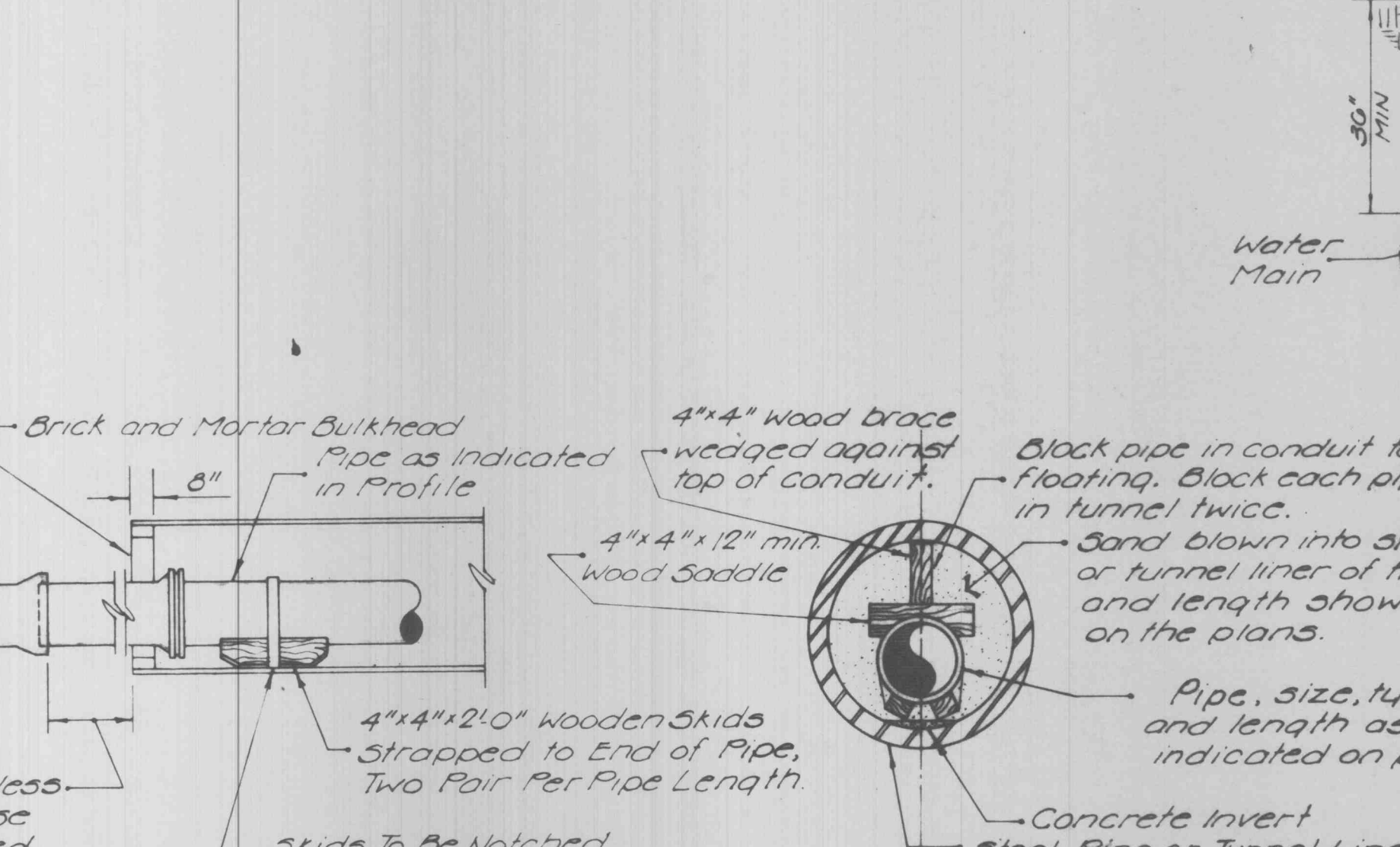
**WATER MAIN EMBEDMENT**



**STRADDLE BLOCK DETAIL**



**TYPICAL SERVICE ASSEMBLY**



**GENERAL NOTES:**

**NOTES:**  
Retaining glands shall be used on 45° bends. UPPER AND LOWER 45° BENDS SHALL BE RODDED TOGETHER USING 5/8" READY RODS. UPPER AND LOWER THRUST BLOCK SHALL BE INSTALLED PER PLAN.

**GBA**  
GEORGE BUTLER ASSOCIATES  
CONSULTING ENGINEERS/ARCHITECTS  
LANDSCAPE ARCHITECTS/PLANNERS

OFFICES:  
SUITE 305-A FAIRMAY OFFICE CENTER  
4210 JENNISON DRIVE / SHAWNEE MISSOURI / KANSAS 66203  
1100 CITY CENTER SQUARE  
1100 MAIN / KANSAS CITY / MISSOURI 64105  
SUITE 134 LANESIDE PLAZA B  
6700 CORPORATE DRIVE / KANSAS CITY / MISSOURI 64120

**WATER MAIN DETAILS**

JOB NO. 6491  
DATE 3/14/92  
SCALE NOT TO SCALE

DESIGNED BY: DRAWN BY: T.R.YORD CHECKED BY: R.E.H. **G6**