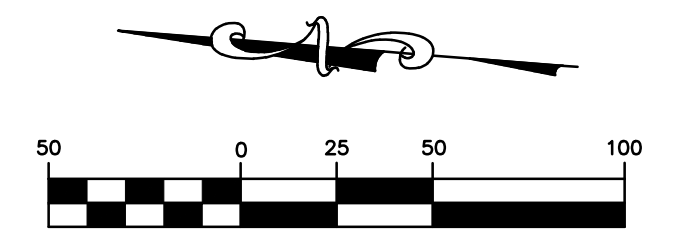


EXISTING CONDITIONS - PHASE II



JANUARY, 2021

LEGEND

INDEX CONTOUR	---	500
INTERMEDIATE CONTOUR	---	
PROPERTY LINE	---	
RIGHT-OF-WAY	---	
LOT LINE	---	
BUILDING SETBACK EASEMENT	---	
UNDERGROUND ELECTRIC	---	UGE
UNDERGROUND TELEPHONE	---	UGT
UNDERGROUND FIBER OPTIC	---	FO
SANITARY SEWER	---	SAN
SANITARY MANHOLE	○	
SANITARY FORCE MAIN	---	FM
STORM SEWER	---	SS
INLET	□	
GRATED INLET	▣	
GAS LINE	---	G
GAS VALVE	⊙	
WATER LINE	---	W
FIRE HYDRANTS	⊕	
WATER VALVE	⊗	
TREELINE	---	
FENCE	---	
CONCRETE PAVEMENT	▨	
ASPHALT PAVEMENT	▩	
GRAVEL SURFACE	▧	

636-584-0540 (tel.)
636-584-0512 (fax)
ma@ochran.com

COCHRAN
Civil Engineering
Land Surveying
Architecture
Site Development
General Consulting
Master Planning

530A E. Independence Dr.
Union, Missouri 63084

Missouri State Certificate of Authority Numbers:
Survey: 000380
Engineering: 001555
Architecture: 2002014240

Three working days prior to the start of any excavation call 1-800-463-ARIZ for utility location information.

All OSHA rules & regulations apply to all construction projects. All construction projects must be strictly followed (ie. trenching, blasting, etc.)

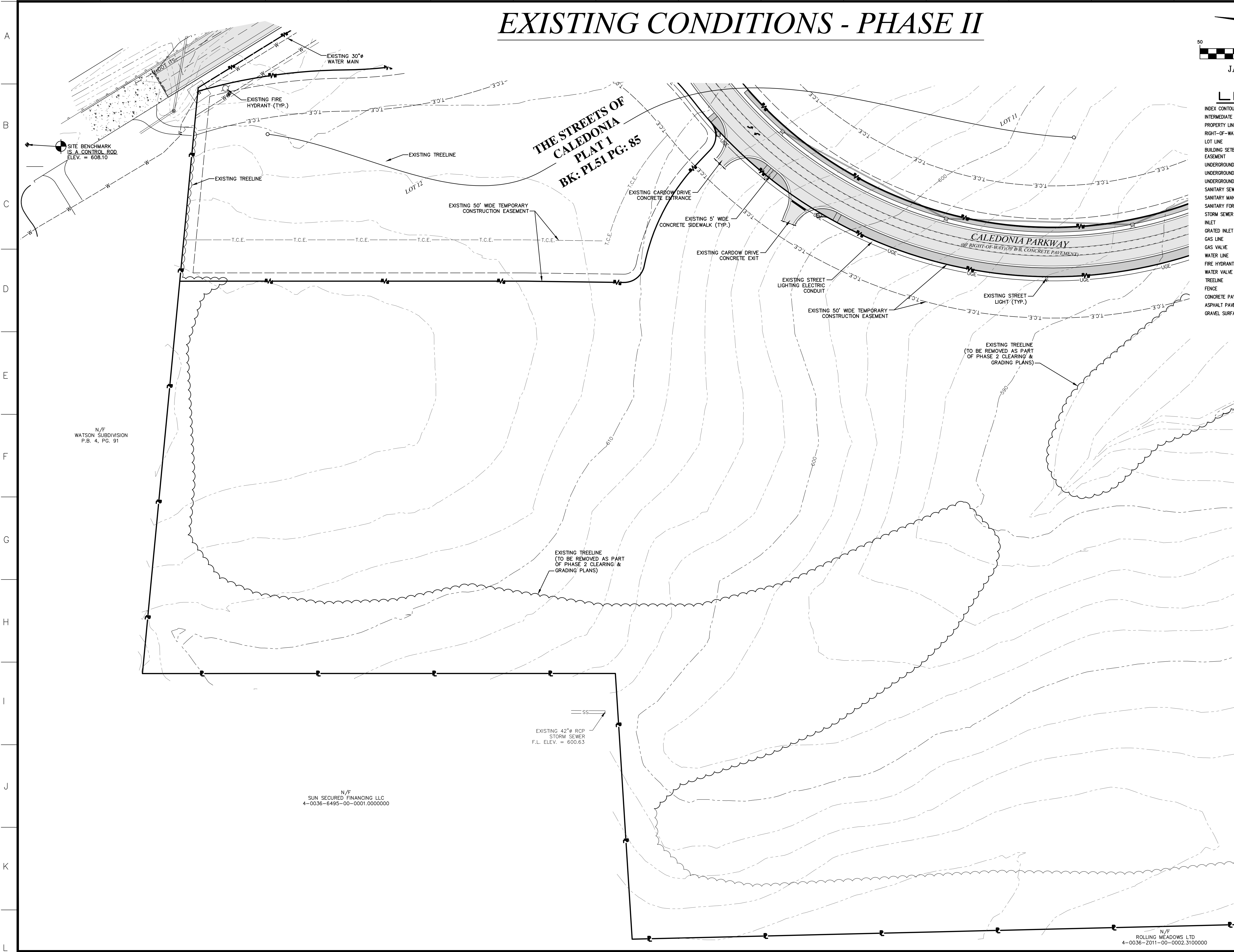
STATE OF MISSOURI
REBECCAH ELLIOTT
REGISTERED PROFESSIONAL ENGINEER
NUMBER PE-2006002845

THE STREETS OF CALEDONIA
PHASE II RESIDENTIAL
O'FALLON, MISSOURI

DATE:	DATE:
DESIGNED BY:	APPROVED BY:
JMM	ERR
DATE:	DATE:
JAN. 13, 2021	
SCALE:	SCALE:
1" = 50'	
PROJ. NO.:	PROJ. NO.:
17-6821	
DWG. NO.:	DWG. NO.:

OWNER/DEVELOPER:
DD LAND DEVELOPMENT, LLC
10407 BAUR BLVD, SUITE B
ST. LOUIS, MO 63132

C2.0



N/F
WATSON SUBDIVISION
P.B. 4, PG. 91

N/F
SUN SECURED FINANCING LLC
4-0036-6495-00-0001.0000000

N/F
ROLLING MEADOWS LTD
4-0036-2011-00-0002.3100000