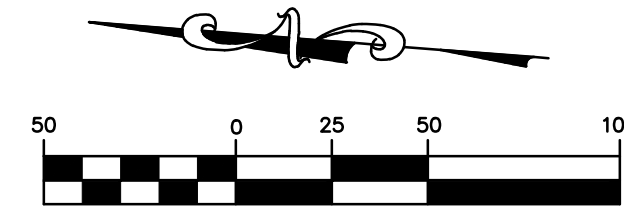


# STREET LIGHTING PLAN - PHASE II



JANUARY, 2021

EXISTING		PROPOSED	
	PROPERTY LINE		PROPERTY LINE
	RIGHT-OF-WAY		RIGHT-OF-WAY
	LOT LINE		LOT LINE
	EASEMENT		EASEMENT
	UNDERGROUND ELECTRIC		UNDERGROUND ELECTRIC
	UNDERGROUND TELEPHONE		UNDERGROUND TELEPHONE
	UNDERGROUND FIBER OPTIC		UNDERGROUND FIBER OPTIC
	SANITARY SEWER		SANITARY SEWER
	SANITARY MANHOLE		SANITARY MANHOLE
	STORM SEWER		STORM SEWER
	INLET		INLET
	GRATED INLET		GRATED INLET
	FLARED END SECTIONS		FLARED END SECTIONS
	GAS LINE		GAS LINE
	WATER LINE		WATER LINE
	FIRE HYDRANTS		FIRE HYDRANTS
	WATER VALVE		WATER VALVE
	LIGHT		LIGHT
	ASPHALT PAVEMENT		ASPHALT PAVEMENT

CUIVRE RIVER WILL INSTALL ALL CONDUIT, PRIMARY & SECONDARY WIRING AND STREET LIGHTS.

636-584-0540 (tel.)  
636-584-0512 (fax)  
mail@cochran.com

**COCHRAN**

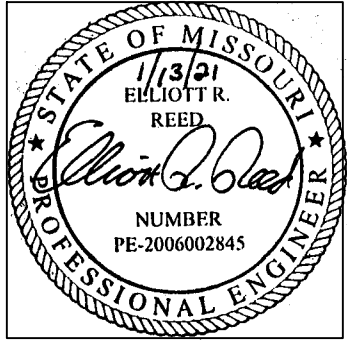
• Civil Engineering  
• Land Surveying  
• Architecture  
• Site Development  
• General Consulting  
• Master Planning

530A E. Independence Dr.  
Union, Missouri 63084

Missouri State Certificate of Authority Numbers:  
Survey: 000380  
Engineering: 001655  
Architecture: 2002014240

Three working days prior to the start of any excavation call 1-800-463-ARTE for utility location information.

All OSHA rules & regulations and all applicable local codes and regulations shall be strictly followed (i.e. trenching, blasting, etc.)



THE STREETS OF CALEDONIA  
PHASE II RESIDENTIAL  
O'FALLON, MISSOURI

DATE	BY	APP'D BY
JAN. 13, 2021	JMM	ERR

SCALE: 1" = 50'

PROJ. NO: 17-6821

DRWG. NO: C3.02

OWNER/DEVELOPER:  
DD LAND DEVELOPMENT, LLC  
10407 BAUR BLVD, SUITE B  
ST. LOUIS, MO 63132

N/F  
ROLLING MEADOWS LTD  
4-0036-2011-00-0002.3100000

N/F  
SUN SECURED FINANCING LLC  
4-0036-6495-00-0001.0000000

N/F  
WATSON SUBDIVISION  
P.B. 4, PG. 91

Drawing name: F:\17-6821 - 260 Acre Tract along Hwy 40, O'Fallon, MO\AutoCad Drawings\6821 - Plan Sheets\Construction Drawings\PH2 Residential Plans\PH2 Street Lighting Plan Phase 2.dwg Tab: STREET LIGHTING PLAN PH2 Plotted on: Jan 13, 2021 - 11:21am Plotted by: tschow