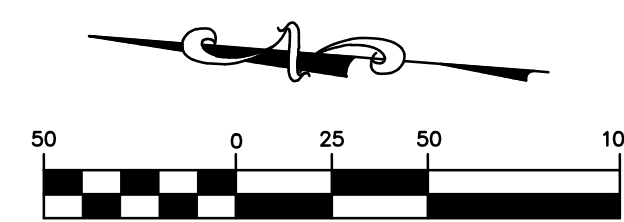


GRADING PLAN - PHASE II



JANUARY, 2021

EXISTING		PROPOSED	
---	INDEX CONTOUR	---	500
---	INTERMEDIATE CONTOUR	---	498
---	PROPERTY LINE	---	
---	RIGHT-OF-WAY	---	
---	LOT LINE	---	
---	EASEMENT	---	
---	UTILITY POLE / GUY WIRE	---	
---	UGE	---	UGE
---	UNDERGROUND ELECTRIC	---	
---	UGT	---	UNDERGROUND TELEPHONE
---	FO	---	UNDERGROUND FIBER OPTIC
---	SAN	---	SANITARY SEWER
---	SAN	---	SANITARY MANHOLE
---	FM	---	SANITARY FORCE MAIN
---	SS	---	STORM SEWER
---		---	INLET
---		---	GRATED INLET
---		---	FLARED END SECTIONS
---		---	GAS LINE
---		---	WATER LINE (SIZE)
---		---	FIRE HYDRANTS
---		---	WATER VALVE
---		---	GUARDRAIL
---		---	FENCE
---		---	LIGHT
---		---	CONCRETE PAVEMENT
---		---	ASPHALT PAVEMENT
---		---	RIP-RAP
---		---	STANDARD BASEMENT
---		---	WALKOUT BASEMENT
---		---	TRANSITION LOT
---		---	STREET CREEP

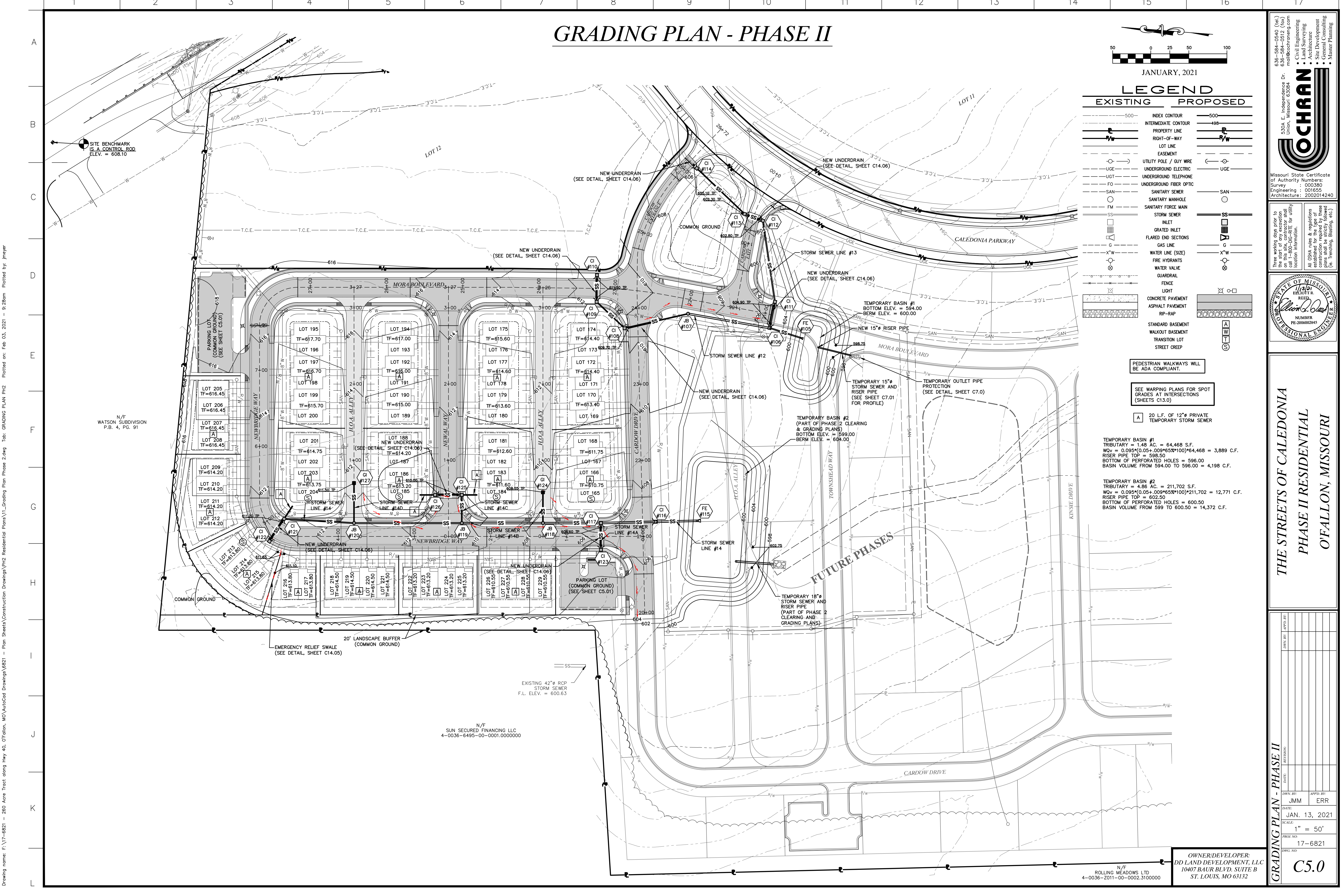
PEDESTRIAN WALKWAYS WILL BE ADA COMPLIANT.

SEE WARPING PLANS FOR SPOT GRADES AT INTERSECTIONS (SHEETS C13.0)

A 20 L.F. OF 12" PRIVATE TEMPORARY STORM SEWER

TEMPORARY BASIN #1
 TRIBUTARY = 1.48 AC. = 64,468 S.F.
 $WQv = 0.095 * (0.05 + 0.09 * 65 * 100) * 64,468 = 3,889$ C.F.
 RISER PIPE TOP = 593.50
 BOTTOM OF PERFORATED HOLES = 596.00
 BASIN VOLUME FROM 594.00 TO 596.00 = 4,198 C.F.

TEMPORARY BASIN #2
 TRIBUTARY = 4.86 AC. = 211,702 S.F.
 $WQv = 0.095 * (0.05 + 0.09 * 65 * 100) * 211,702 = 12,771$ C.F.
 RISER PIPE TOP = 602.50
 BOTTOM OF PERFORATED HOLES = 600.50
 BASIN VOLUME FROM 599 TO 600.50 = 14,372 C.F.



Drawing name: E:\17-6821 - 860 Acre Tract along Hwy 40, O'Fallon, MO\AutoCad Drawings\6821 - Plan Sheets\Construction Drawings\PH2 Residential Plans\17_Grading Plan Phase 2.dwg Tab: GRADING PLAN PH2 Plotted on: Feb 03, 2021 - 9:28am Plotted by: j_meyer

636-584-0540 (tel.)
 636-584-0512 (fax)
 mail@ochran.com
COCHRAN
 Civil Engineering
 Land Surveying
 Architecture
 Site Development
 General Consulting
 Master Planning

Missouri State Certificate of Authority Numbers:
 Survey: 000380
 Engineering: 001655
 Architecture: 2002014240

Three working days prior to the start of any excavation call 1-800-UGC-RTTE for utility location information.
 All OSHA rules & regulations construction required by these plans shall be strictly followed (ie. trenching, blasting, etc.)

STATE OF MISSOURI
 ELLIOTT R. REEB
 MISSOURI PROFESSIONAL ENGINEER
 NUMBER PE-200602845

THE STREETS OF CALEDONIA
 PHASE II RESIDENTIAL
 O'FALLON, MISSOURI

DATE	BY	APPROVED BY
JAN. 13, 2021	JMM	ERR

SCALE: 1" = 50'
 PROJ. NO: 17-6821
 DWG. NO: C5.0

OWNER/DEVELOPER:
 DD LAND DEVELOPMENT, LLC
 10407 BAUR BLVD, SUITE B
 ST. LOUIS, MO 63132

N/F
 ROLLING MEADOWS LTD
 4-0036-2011-00-0002.3100000